



# 220 BROADWAY

EVERETT, MA

FOR SALE OR LEASE | 21,204 SF FLEX BUILDING ON 0.65 ACRES

- 0.7 Miles from Encore Boston
- 4 Miles to Logan Airport
- Fully Retrofitted Flex/R&D Building
- Opportunity Zone



THE  
STUBBLEBINE  
COMPANY

CORFAC INTERNATIONAL



## PROPERTY SUMMARY



### PROPERTY DESCRIPTION

21,204 SF Flex Building on 0.65 AC For Sale or Lease  
Fully Retrofitted Flex/R&D Building

### LOCATION HIGHLIGHTS

- Located right off Revere Beach Parkway and 0.7 Miles from Encore Boston
- Opportunity Zone
- Across the street to the Everett Docklands Innovation District, a massive development project comprised of a 20-acre battery energy storage facility and 6.776 Million SF of mixed-use space including industrial, manufacturing, lab, office, retail, and residential
- 1.7 Miles to Route 1
- 2 Miles to Assembly Row Somerville
- 3 Miles to I-93
- 4 Miles to Boston
- 4 Miles to Boston Logan Airport

### PROPERTY SPECIFICATIONS

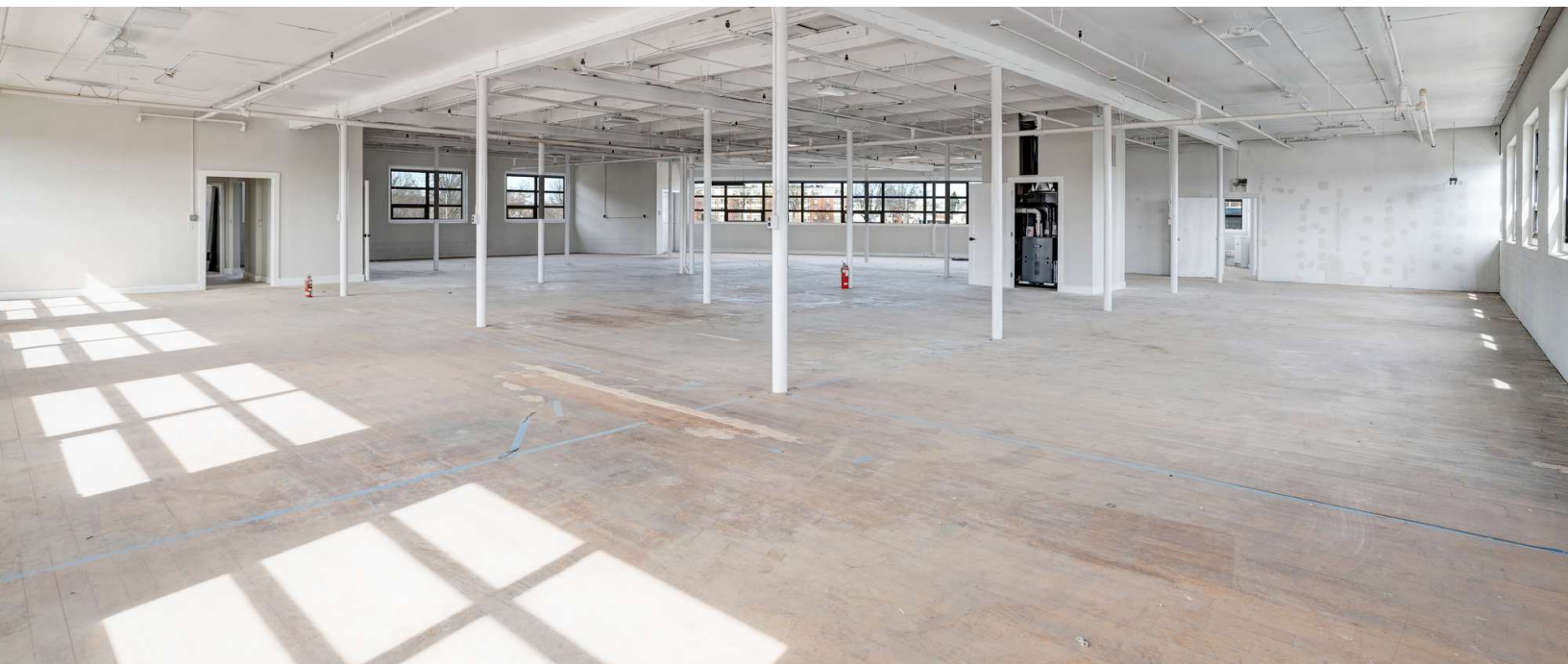
Building Size:	21,204 SF
Size Available:	21,204 SF
SF Per Floor:	7,068 SF
Stories:	3 Stories
Lot Size:	0.65 AC
Parking:	25 Spaces
Power:	120-208V, 3 Phase
Sale Price:	Market

DEMOGRAPHICS	3 MILES	5 MILES	10 MILES
Total Households	160,374	335,846	738,116
Total Population	392,415	811,350	1,856,317
Average HH Income	\$135,287	\$145,657	\$151,510

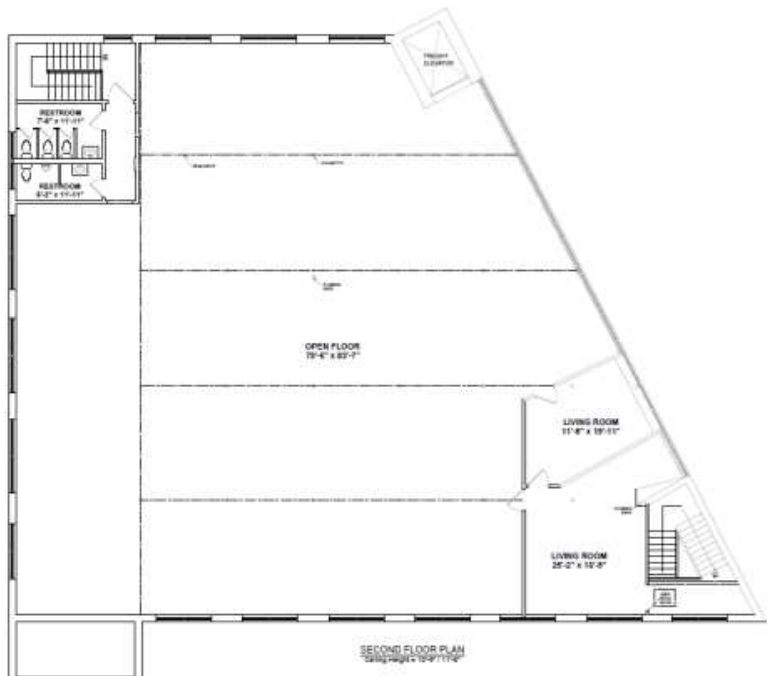
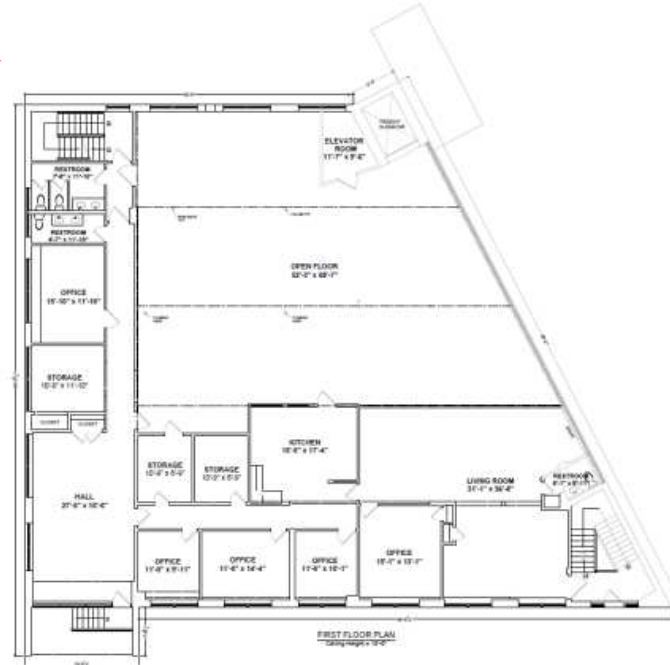








FLOOR PLANS







**MALDEN**

**28**

**1.3 MILE**  
**4 MIN**



**2.3 MILE**  
**7 MIN**

**CHELSEA**

**2.2 MILES**  
**13 MIN**



**1.5 MILE**  
**6 MIN**



**2 MILE**  
**9 MIN**

**MALDEN**

**1.9 MILES**  
**9 MIN**



**1.9 MILE**  
**10 MIN**



**3.9 MILE**  
**17 MIN**

**EVERETT**

**0.8 MILES**  
**5 MIN**



**EVERETT**



**CHELSEA**



**CENTRAL-MAVERICK SQUARE / PARIS STREET**





# 220 BROADWAY

## EVERETT, MA

FOR SALE OR LEASE | 21,204 SF FLEX BUILDING ON 0.65 ACRES

**HUNTER ROBERTS**

714.478.7993

[hroberts@stubblebinecompany.com](mailto:hroberts@stubblebinecompany.com)

**COLE BEHRENS**

978.949.9637

[cbehrens@stubblebinecompany.com](mailto:cbehrens@stubblebinecompany.com)

**DANNY CRUZ**

978.305.0473

[danny@stubblebinecompany.com](mailto:danny@stubblebinecompany.com)

**JAMES STUBBLEBINE**

617.592.3388

[james@stubblebinecompany.com](mailto:james@stubblebinecompany.com)

**DAVID STUBBLEBINE**

617.592.3391

[david@stubblebinecompany.com](mailto:david@stubblebinecompany.com)

We obtained the information above from sources we believe to be reliable. However, we have not verified its accuracy and make no guarantee, warranty or representation about it. It is submitted subject to the possibility of errors, omissions, change of price, rental or other conditions, prior sale, lease or financing, or withdrawal without notice. We include projections, opinions, assumptions or estimates for example only, and they may not represent current or future performance of the property. You and your tax and legal advisors should conduct your own investigation of the property and transaction.



THE  
STUBBLEBINE  
COMPANY

CORFAC INTERNATIONAL