



TRI STATE
COMMERCIAL®
REAL ESTATE EXPERTS

For Lease



New Development Retail Space In Prime Williamsburg For Lease

1,200 SF

202 North 4th Street • Brooklyn • NY

For Pricing **Call: 718-437-6100**

Shlomi Bagdadi
📞 718.437.6100
sb@tristatecr.com

Avi Akiva
📞 718.437.6100 x110
Avi.A@TriStateCR.com



Location Overview

Located in the Williamsburg neighborhood of Brooklyn between Driggs Ave & Roebling St near the Metropolitan Ave subway station.

Nearest Transit: L & G train at Metropolitan Ave and L train at Bedford Ave L. The B62, Q59, & B24 bus lines.

Nearby tenants include Inday, Fish Cheeks, Butchers Daughter, Westville, Tacombi, Ace's Pizza, CYCLEBAR, Pod Brooklyn Hotel, Apple Williamsburg, Martha's Country Bakery, Salt + Charcoal, Springbone Kitchen, Birds of a Feather, The Residence of Mr. Moto, Quinoa Kitchen, Black Brick Coffee, Kolkata Chai Co, Topsy Scoop, and more!

Main Highlights

- ▶ New development



12,976 SF

Total Building Size



3,968 SF

Lot Size



M1-2/R6A, MX-8

Zoning

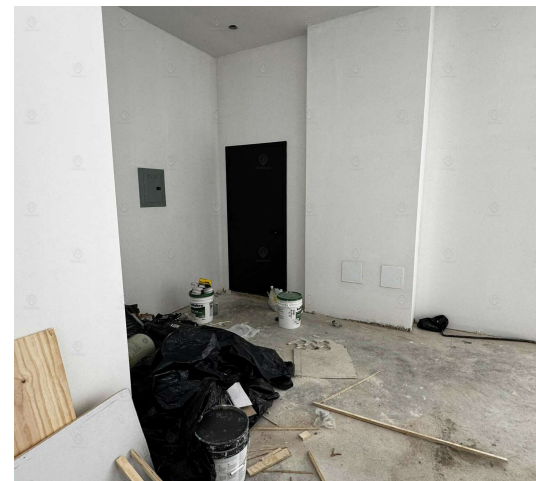
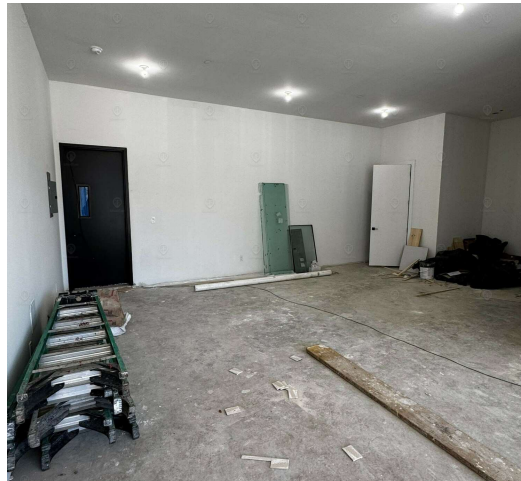
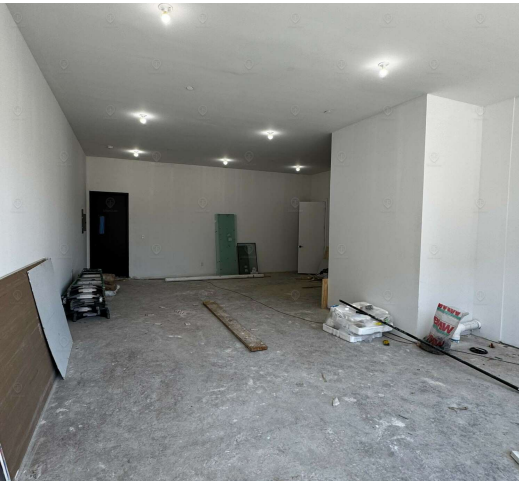
FOR LEASE • 1,200 SF • For Pricing

Call: 718-437-6100

Shlomi Bagdadi
📞 718.437.6100
sb@tristatecr.com

Avi Akiva
📞 718.437.6100 x110
Avi.A@TriStateCR.com

Broker is relying on Landlord or other Landlord-supplied sources for the accuracy of said information and has no knowledge of the accuracy of it. Broker makes no representation and/or warranty, expressed or implied, as to the accuracy of such information.



FOR LEASE • 1,200 SF • For Pricing

Call: 718-437-6100

Shlomi Bagdadi
📞 718.437.6100
sb@tristatecr.com

Avi Akiva
📞 718.437.6100 x110
Avi.A@TriStateCR.com

Broker is relying on Landlord or other Landlord-supplied sources for the accuracy of said information and has no knowledge of the accuracy of it. Broker makes no representation and/or warranty, expressed or implied, as to the accuracy of such information.



Map data
©2025
Google

FOR LEASE • 1,200 SF • For Pricing

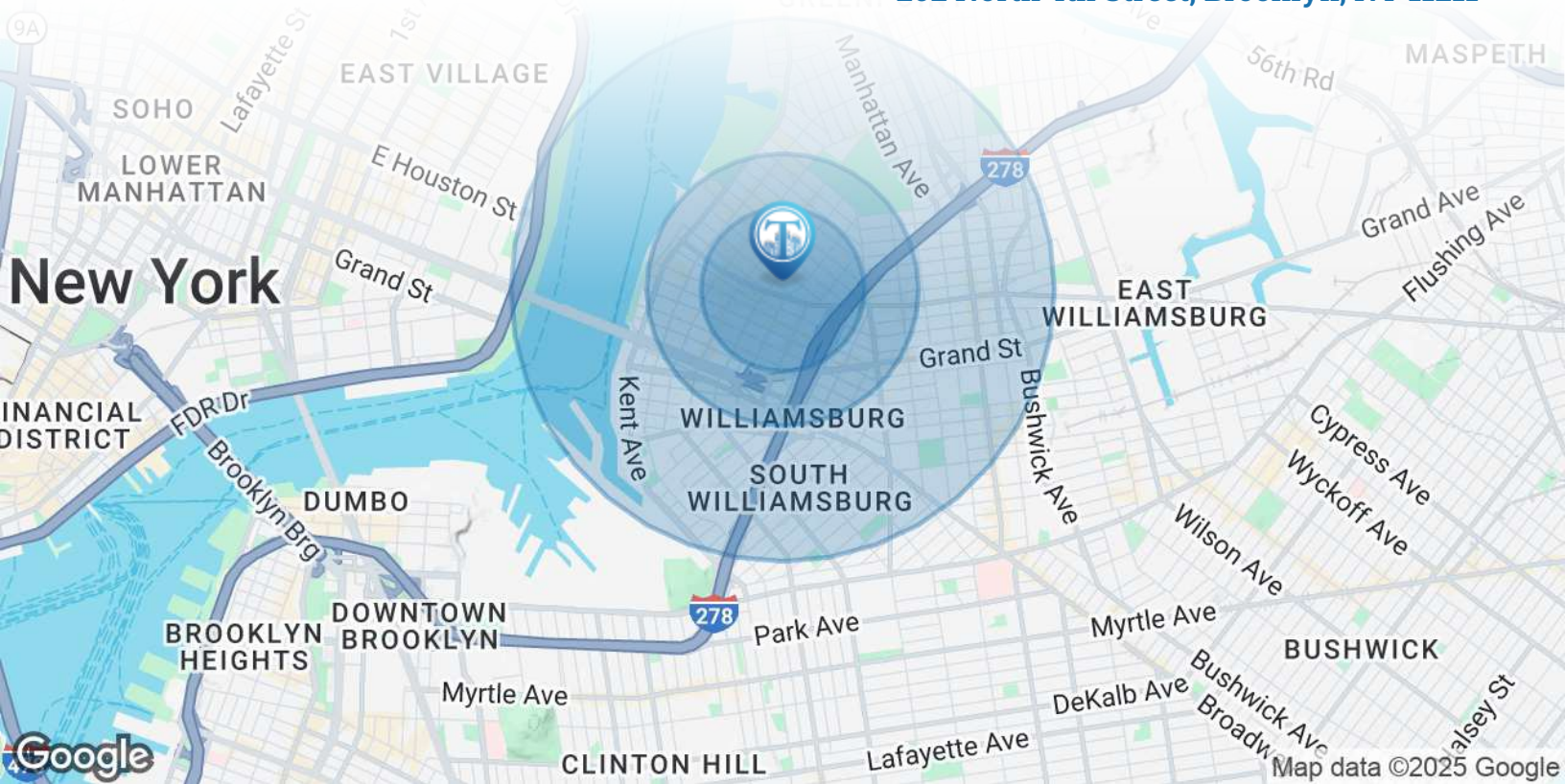
Call: 718-437-6100

Shlomi Bagdadi
☎ 718.437.6100
sb@tristatecr.com

Avi Akiva
☎ 718.437.6100 x110
Avi.A@TriStateCR.com

Broker is relying on Landlord or other Landlord-supplied sources for the accuracy of said information and has no knowledge of the accuracy of it. Broker makes no representation and/or warranty, expressed or implied, as to the accuracy of such information.

202 North 4th Street, Brooklyn, NY 11211



POPULATION	0.3 MILES	0.5 MILES	1 MILE
Total Population	12,203	48,688	145,449
Average Age	37	36	35
Average Age (Male)	36	36	35
Average Age (Female)	37	36	36
HOUSEHOLDS & INCOME	0.3 MILES	0.5 MILES	1 MILE
Total Households	5,938	23,142	61,199
# of Persons per HH	2.1	2.1	2.4
Average HH Income	\$180,356	\$184,277	\$139,066
Average House Value	\$1,292,111	\$1,416,467	\$1,268,708



145,449

People within 1 Mile



\$139,066

Avg Household Income

FOR LEASE • 1,200 SF • For Pricing

Call: 718-437-6100

Shlomi Bagdadi
 718.437.6100
 sb@tristatecr.com

Avi Akiva
 718.437.6100 x110
 Avi.A@TriStateCR.com

Broker is relying on Landlord or other Landlord-supplied sources for the accuracy of said information and has no knowledge of the accuracy of it. Broker makes no representation and/or warranty, expressed or implied, as to the accuracy of such information.

For Lease



TriStateCR.com

1,200 SF | 202 North 4th Street New Development Retail Space In Prime Williamsburg For Lease

1,200 SF • For Pricing **Call: 718-437-6100**

202 North 4th Street • Brooklyn • NY

Shlomi Bagdadi
☎ 718.437.6100
sb@tristatecr.com

Avi Akiva
☎ 718.437.6100 x110
Avi.A@TriStateCR.com

