



# VMS REAL ESTATE AND PROPERTY MANAGEMENT

762 HWY 26  
DEVELOPMENT

VALLEY SPRINGS, CA

*Available  
Owner  
financing!*

## FEATURES:

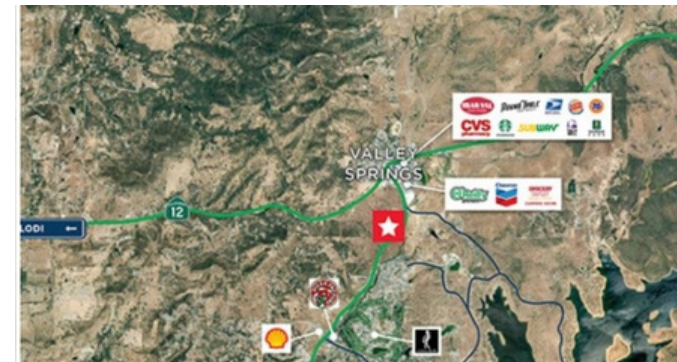
- \$350,000 development costs completed
- Approved for 98 residential and 3 Commercial lots

**\$1,900,000**

**Valarie Beadle**  
**209-753-8254**  
**209-474-9000**

CalDRE #01182222

[vbeadle@vmspropertymanagement.com](mailto:vbeadle@vmspropertymanagement.com)



**OFFICE:**

**209-753-8254**