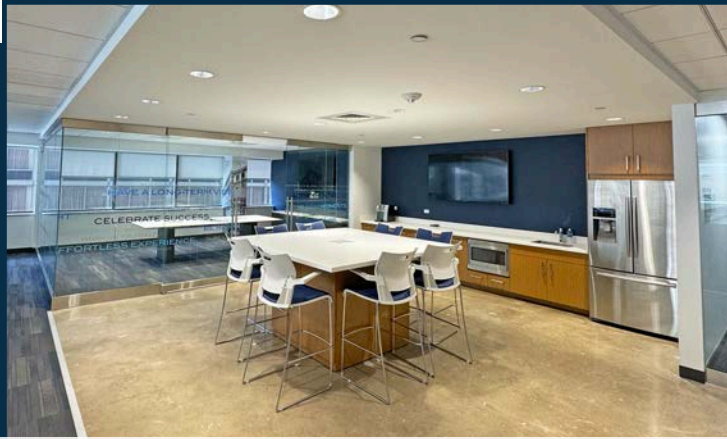


# 1760 MARKET STREET PHILADELPHIA, PA

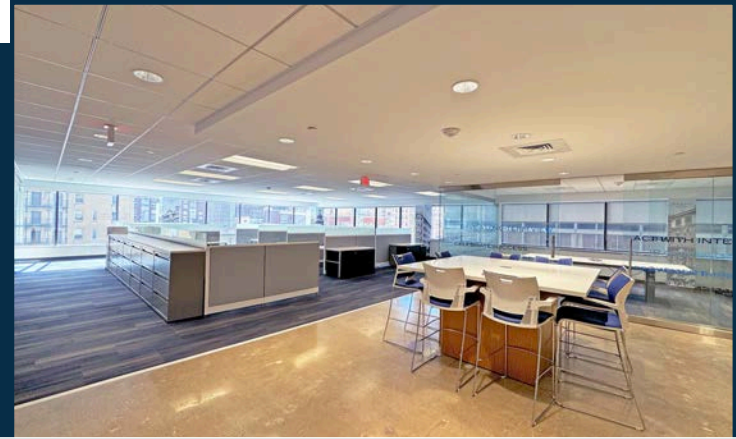
1760  
MKT

SUITE 800 | 3,294 RSF

FULLY FURNISHED, MOVE-IN READY SUITE



FULL KITCHEN AND DINING AREA



OPEN WORK AREA WITH LARGE WINDOWS

## SPACE HIGHLIGHTS



Two private offices, full kitchen, and dining area



Large conference room with glass doors



Column-free, open work area with abundance of natural light



Fully-furnished, move-in ready suite

SUITE 800  
VIRTUAL TOUR



## BUILDING FEATURES

- Sophisticated boutique environment
- On-site building management
- Keystone Innovation Zone opportunity
- Tenant lounge and building conference center
- Designated bike room
- 24/7 manned security desk



ADDITIONAL BUILDING ENHANCEMENTS PLANNED



STOCKTON  
REAL ESTATE ADVISORS

# PRIME MARKET STREET LOCATION AT THE LOWEST MARKET (STREET) RATE!

- Column-free floor plates providing maximum efficiency and flexible open floor plans.
- Unparalleled connectivity with easy access to Suburban Station, I-676, I-76, and I-95. Conveniently located minutes from PATCO Speedline and 30th Street Station.



TENANT LOUNGE & CONFERENCE ROOM

## BUILDING AMENITIES

- Conference Center
- Bike Storage
- On-Site Management
- Tenant Lounge
- On-Site Banking
- 24/7 Security

Prime corner office building located directly on Philadelphia's "Pedestrian Highway"

**RETAIL**  
NEW & COMING SOON

- EQUINOX
- Levain
- GLOWBAR
- WORLD OF FLIGHT
- ARITZIA
- FIGS
- SKIN LAUNDRY
- FLIGHT CLUB
- ayat
- Lucy's
- Reformation

WALK SCORE  
100

TRANSIT SCORE  
100

BIKE SCORE  
82

**Nearby Amenities**

- Parking
- Hotels
- Gyms

**Jacklyn Hadzor**  
609.760.9985  
jhadzor@StocktonREA.com

**Stockton Real Estate Advisors, LLC**  
1760 Market Street, Suite 900, Philadelphia, PA  
215.636.4444 | www.StocktonREA.com

