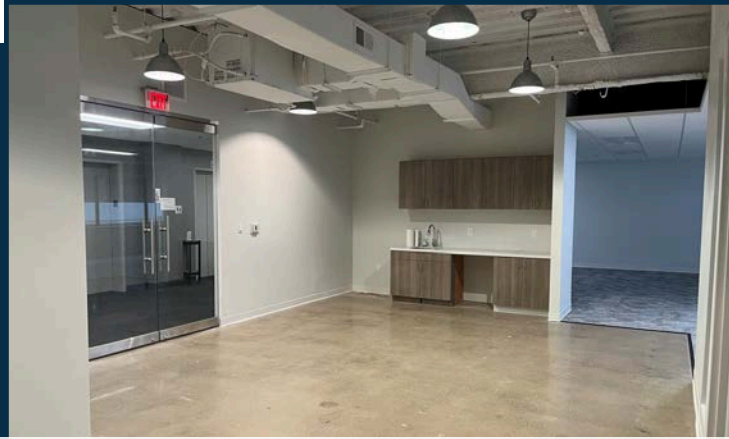


1760 MARKET STREET PHILADELPHIA, PA

17
60
MKT

SUITE 500 | 2,220 RSF

MOVE-IN READY SPEC SUITE







HIGH END FINISHES & KITCHENETTE



FLEXIBLE, OPEN WORK AREA

SPACE HIGHLIGHTS

-  Move-in ready, spec suite
-  2 private offices overlooking 18th Street
-  High-end finishes with concrete polished floors and exposed ceiling
-  Flexible, open workspace with a kitchenette

SUITE 500
VIRTUAL TOUR



BUILDING FEATURES

- Sophisticated boutique environment
- On-site building management
- Keystone Innovation Zone opportunity
- Tenant lounge and building conference center
- Designated bike room
- 24/7 manned security desk



ADDITIONAL BUILDING ENHANCEMENTS PLANNED



STOCKTON
REAL ESTATE ADVISORS

PRIME MARKET STREET LOCATION AT THE LOWEST MARKET (STREET) RATE!

- Column-free floor plates providing maximum efficiency and flexible open floor plans.
- Unparalleled connectivity with easy access to Suburban Station, I-676, I-76, and I-95. Conveniently located minutes from PATCO Speedline and 30th Street Station.



TENANT LOUNGE & CONFERENCE ROOM

BUILDING AMENITIES

- Conference Center
- Bike Storage
- On-Site Management
- Tenant Lounge
- On-Site Banking
- 24/7 Security

Prime corner office building located directly on Philadelphia's "Pedestrian Highway"

RETAIL
NEW & COMING SOON

- EQUINOX
- Levain
- GLOWBAR
- WORLD OF FLIGHT
- ARITZIA
- FIGS
- SKIN LAUNDRY
- FLIGHT CLUB
- ayat
- Lucy's
- Reformation

Map details include: Market Street, 15th Street Station, 17th Street Station, Broad Street Line, Dilworth Park, City Hall, Rittenhouse Square, and various businesses like Anthropologie, HipCityVeg, and Bar Bombón.

WALK SCORE
100

TRANSIT SCORE
100

BIKE SCORE
82

Nearby Amenities

- Parking
- Hotels
- Gyms

Jacklyn Hadzor
609.760.9985
jhadzor@StocktonREA.com

Stockton Real Estate Advisors, LLC
1760 Market Street, Suite 900, Philadelphia, PA
215.636.4444 | www.StocktonREA.com

