

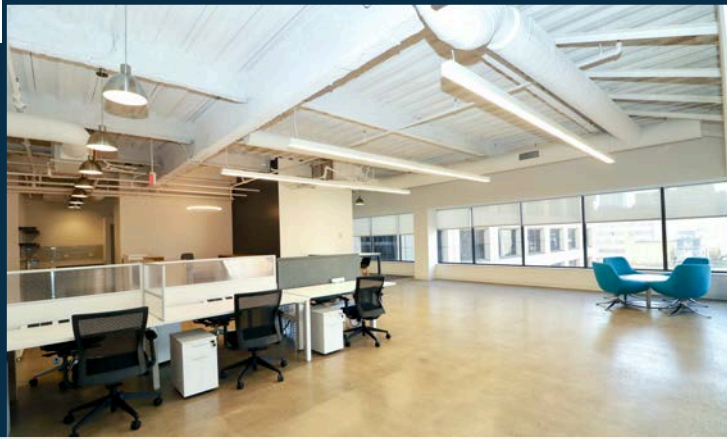
1760 MARKET STREET

PHILADELPHIA, PA

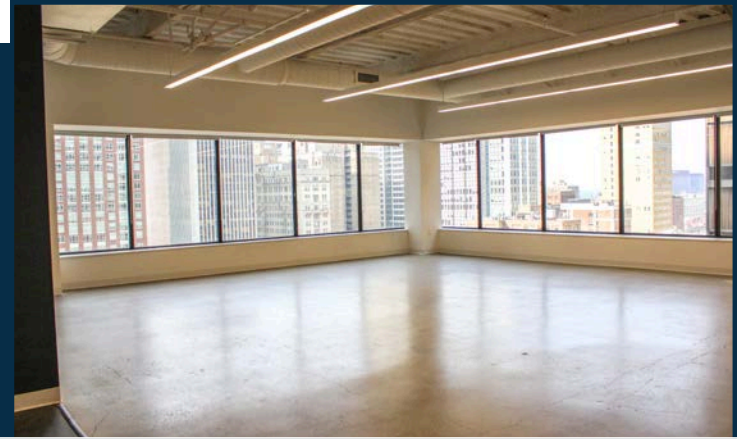
17
60
MKT

SUITE 1301 | 3,300 RSF

MOVE-IN READY SUITE WITH HIGH-END FINISHES






FLEXIBLE, OPEN WORK AREA



CORNER SUITE

SPACE HIGHLIGHTS

-  Prime corner suite with stunning views toward Rittenhouse Square
-  2 private offices, large conference room, huddle rooms, kitchenette and dining area
-  High-end finishes with polished concrete floors and exposed ceilings

SUITE 1301
VIRTUAL TOUR



BUILDING FEATURES

- Sophisticated boutique environment
- On-site building management
- Keystone Innovation Zone opportunity
- Tenant lounge and building conference center
- Designated bike room
- 24/7 manned security desk



ADDITIONAL BUILDING ENHANCEMENTS PLANNED



STOCKTON
REAL ESTATE ADVISORS

17
60
MKT

PRIME MARKET STREET LOCATION AT THE LOWEST MARKET (STREET) RATE!

- Column-free floor plates providing maximum efficiency and flexible open floor plans.
- Unparalleled connectivity with easy access to Suburban Station, I-676, I-76, and I-95. Conveniently located minutes from PATCO Speedline and 30th Street Station.



TENANT LOUNGE & CONFERENCE ROOM

BUILDING AMENITIES

- Conference Center
- Bike Storage
- On-Site Management
- Tenant Lounge
- On-Site Banking
- 24/7 Security

Prime corner office building located directly on Philadelphia's "Pedestrian Highway"

RETAIL
NEW & COMING SOON

- EQUINOX
- Levain
- GLOWBAR
- WORLD OF FLIGHT
- ARITZIA
- FIGS
- SKIN LAUNDRY
- FLIGHT CLUB
- ayat
- Lucy's
- Reformation

Map details include: 1760 MKT (highlighted in pink), 18th Street Pedestrian Highway, Market Street, 15th Street Station, 15th Street, Dilworth Park, City Hall, Broad Street Line, Chestnut Street, Sansom Street, Walnut Street, Locust Street, Rittenhouse Square (highlighted in green), and various businesses like Anthropologie, HipCityVeg, and Devon Seafood + Steak.

WALK SCORE
100

TRANSIT SCORE
100

BIKE SCORE
82

Nearby Amenities

- Parking
- Hotels
- Gyms

Jacklyn Hadzor
609.760.9985
jhadzor@StocktonREA.com

Stockton Real Estate Advisors, LLC
1760 Market Street, Suite 900, Philadelphia, PA
215.636.4444 | www.StocktonREA.com

