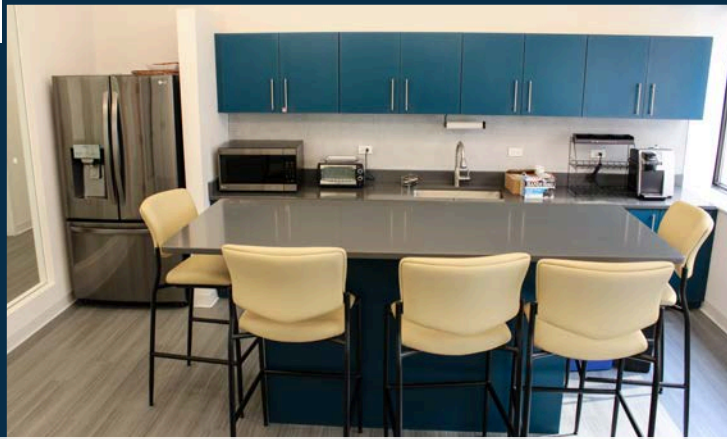


# 1760 MARKET STREET PHILADELPHIA, PA

1760  
MKT

SUITE 1300 | 5,852 RSF

FULLY FURNISHED, MOVE-IN READY SUITE







FULL KITCHEN AND DINING AREA



LARGE CONFERENCE ROOM

## SPACE HIGHLIGHTS

-  Twelve private offices, full kitchen, and dining area
-  One large conference room with glass doors, and one small conference room
-  Column-free, open work area with an abundance of natural light
-  Fully-furnished, move-in ready suite

SUITE 1300  
VIRTUAL TOUR



## BUILDING FEATURES

- Sophisticated boutique environment
- On-site building management
- Keystone Innovation Zone opportunity
- Tenant lounge and building conference center
- Designated bike room
- 24/7 manned security desk



ADDITIONAL BUILDING ENHANCEMENTS PLANNED

NOW UNDER NEW OWNERSHIP



STOCKTON  
REAL ESTATE ADVISORS

# PRIME MARKET STREET LOCATION AT THE LOWEST MARKET (STREET) RATE!

- Column-free floor plates providing maximum efficiency and flexible open floor plans.
- Unparalleled connectivity with easy access to Suburban Station, I-676, I-76, and I-95. Conveniently located minutes from PATCO Speedline and 30th Street Station.



TENANT LOUNGE & CONFERENCE ROOM

## BUILDING AMENITIES

- Conference Center
- Bike Storage
- On-Site Management
- Tenant Lounge
- On-Site Banking
- 24/7 Security

Prime corner office building located directly on Philadelphia's "Pedestrian Highway"

**RETAIL**  
NEW & COMING SOON

- EQUINOX
- Levain
- GLOWBAR
- WORLD OF FLIGHT
- ARITZIA
- FIGS
- SKIN LAUNDRY
- FLIGHT CLUB
- ayat
- Lucy's
- Reformation

Map details include: 1760 MKT (highlighted in pink), 18th Street Pedestrian Highway, Market Street, Chestnut Street, Sansom Street, Walnut Street, Locust Street, Dilworth Park, City Hall, Broad Street Line, and various businesses like Ruth's Chris, HipCityVeg, and Devon Seafood.

**Nearby Amenities**

- Parking
- Hotels
- Gyms

WALK SCORE  
100

TRANSIT SCORE  
100

BIKE SCORE  
82

**Jacklyn Hadzor**  
609.760.9985  
jhadzor@StocktonREA.com

**Stockton Real Estate Advisors, LLC**  
1760 Market Street, Suite 900, Philadelphia, PA  
215.636.4444 | www.StocktonREA.com

