



GENESEE
COMMERCIAL
GROUP, LLC

FOR LEASE

OFFICE

7220 W. JEFFERSON AVENUE
Lakewood, Colorado 80235



PROPERTY SPECIFICATIONS

- Local ownership and management
- Updated building and common areas
- Abundant nearby amenities
- Connectivity through Comcast
- Convenient location at Hwy 285 and Wadsworth
- Most suites have individual HVAC control

PROPERTY FEATURES

| | | |
|----------------|-----------------|-----------|
| Available: | Suite 450 | 843 RSF |
| | Suite 323 | 844 RSF |
| | Suite 409 | 1,145 RSF |
| Lease Rate: | \$17.00/RSF FSG | |
| Parking Ratio: | 4/1,000 SF | |
| Stories: | Four | |
| Elevators: | One | |

FOR MORE INFORMATION CONTACT:

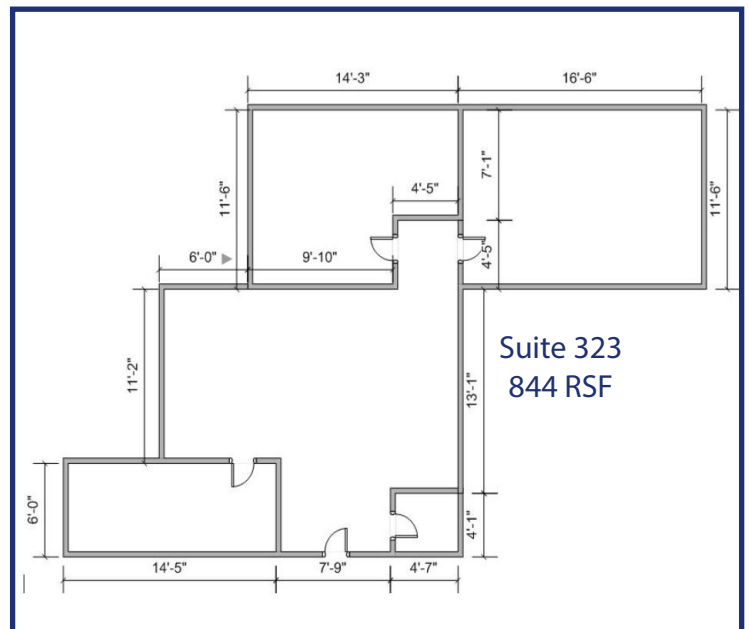
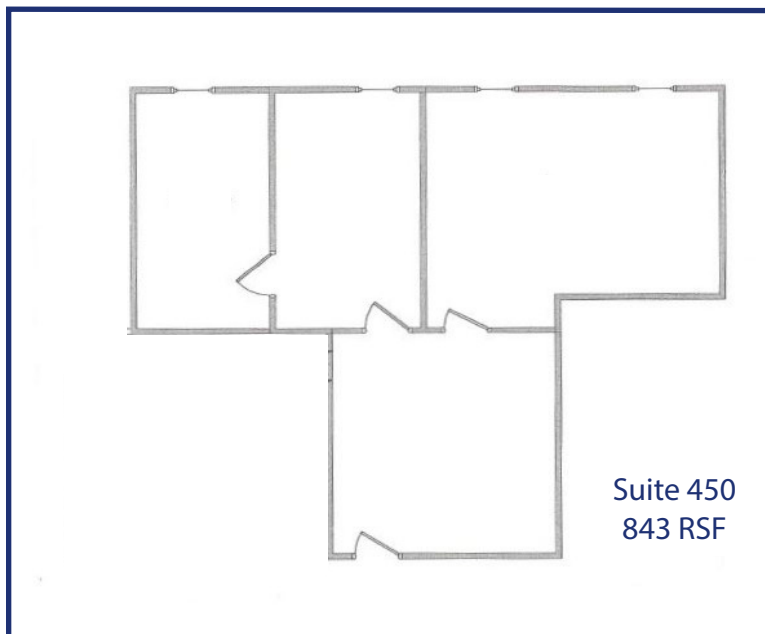
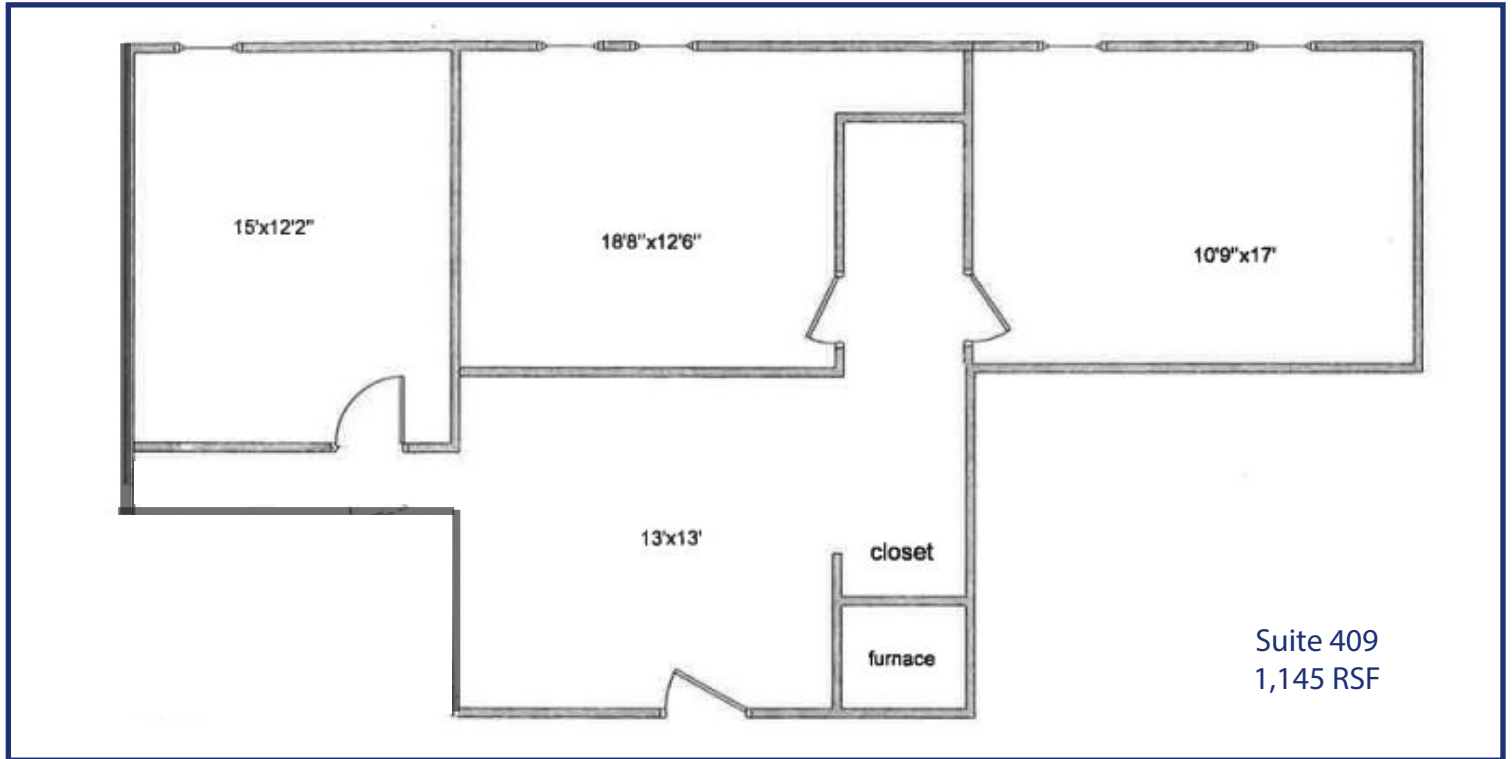
RENÉE SPICER
rspicer@gcgcre.com | 720.476.5226

WILLIAM NETWAL
wnetwal@gcgcre.com | 720.476.5228



GENESEE
COMMERCIAL
GROUP, LLC

7220 W. JEFFERSON AVENUE
Lakewood, Colorado 80235



FOR MORE INFORMATION CONTACT:

RENÉE SPICER
rspicer@gcgcre.com | 720.476.5226

WILLIAM NETWAL
wnetwal@gcgcre.com | 720.476.5228

GENESEE COMMERCIAL GROUP, LLC | 710 KIPLING STREET, SUITE 403 | LAKEWOOD, COLORADO 80215 | WWW.GCGCRE.COM

No warranty or representation is made as to the accuracy of the foregoing information. Terms of sale or lease and availability are subject to change or withdrawal without notice.