

FOR SALE

602 Martin Street North | Pell City, AL 35125

\$825,000

.88 ACRES +/-

6,500 SF +/- BUILDING



- Prime location on US Hwy 231 aka Martin Street N, Pell City's primary retail corridor (21,341 VPD 2022)
- Building: 6,500 +/- sf including 2,000 +/- sf office/showroom, and 4,500 +/- sf warehouse/ service area
- Site: .88 +/- acres
- Construction type offers good conversion to other uses or the site could be completely redeveloped
- Next to McDonald's less than a mile south of I-20 main Pell City Exit #158
- Building also includes 18' eave height, 4 drive-in doors, mezzanine storage, and covered rear loading area

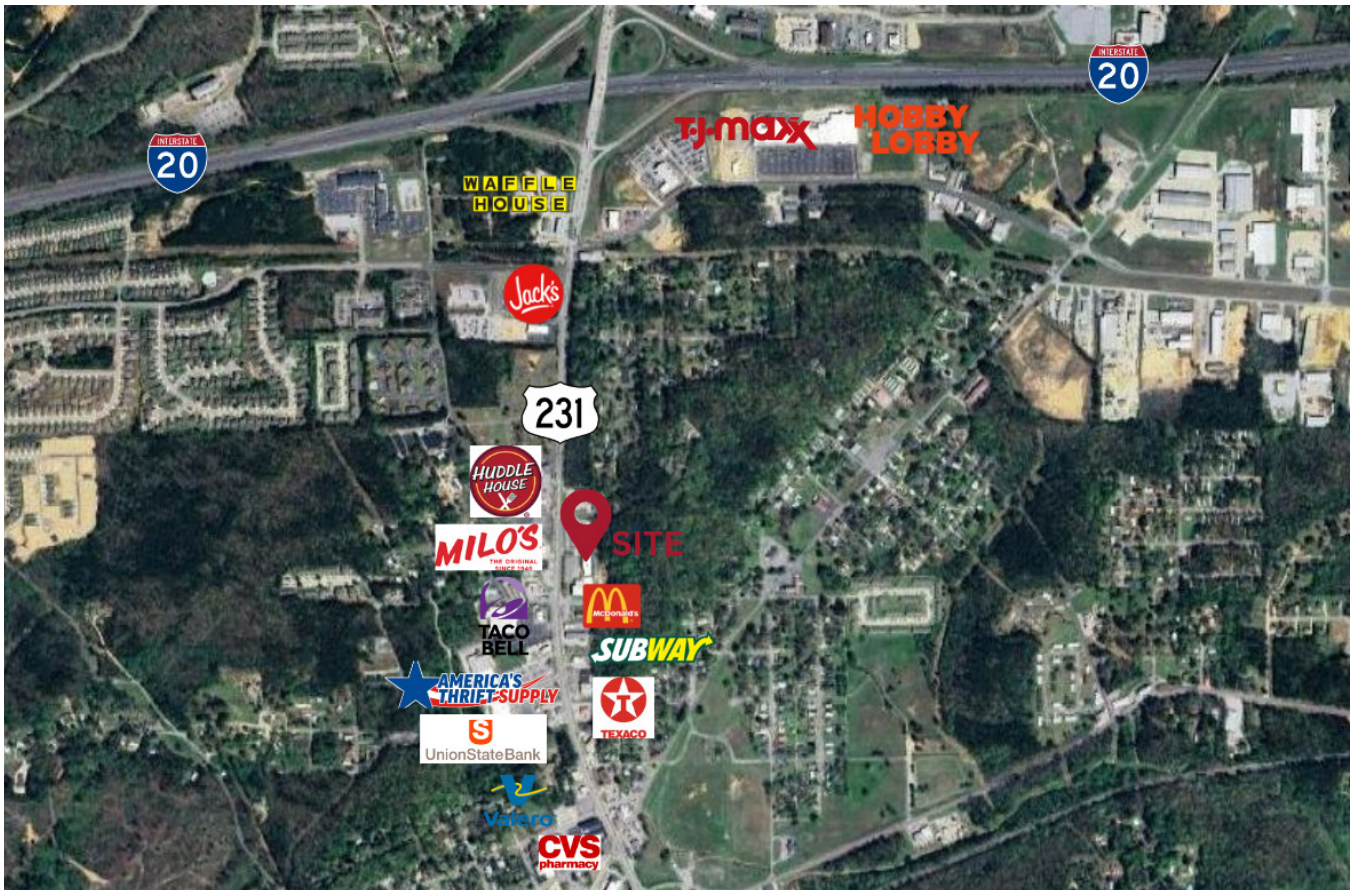
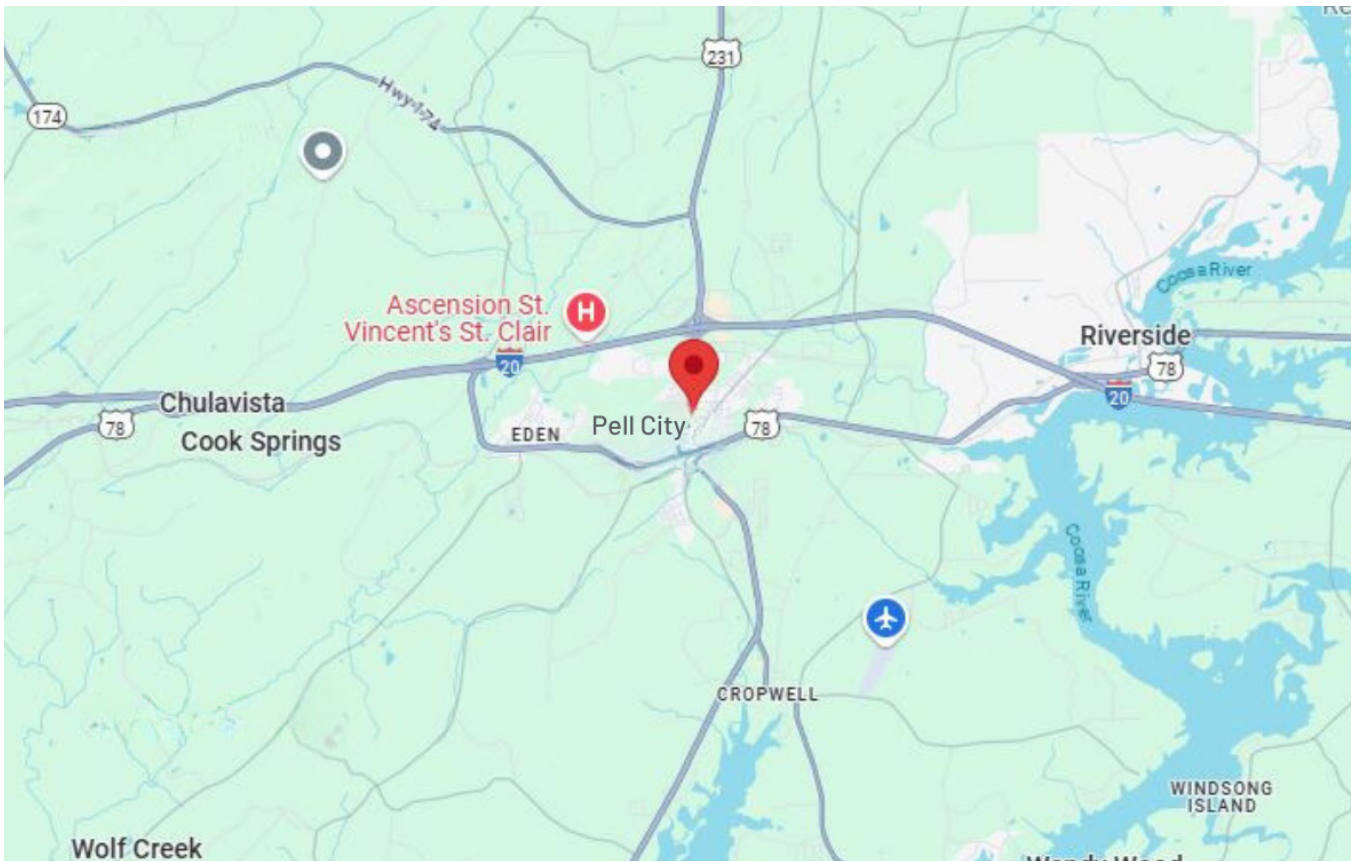
AUSTIN BLAIR

ablair@lahcommercial.com | (205) 478 - 7805



2850 Cahaba Road, Suite 200 · Birmingham, AL 35223 · 205-870-8580 (o) · lahcommercial.com

Information deemed reliable but not guaranteed



AUSTIN BLAIR

ablair@lahcommercial.com | (205) 478 - 7805



2850 Cahaba Road, Suite 200 • Birmingham, AL 35223 • 205-870-8580 (o) • lahcommercial.com

Information deemed reliable but not guaranteed