



TRI STATE
COMMERCIAL®
REAL ESTATE EXPERTS

For Lease



Unique Corner Retail With Wraparound Frontage For Lease

5,500 SF

229 Livingston Street • Brooklyn • NY

For Pricing **Call: 718-437-6100**

Shlomi Bagdadi
📞 718.437.6100
sb@tristatecr.com

Leo Beda
📞 718.437.6100
Leo.B@tristatecr.com



Location Overview

Located in Downtown Brooklyn between Elm Pl & Bond St near the Hoyt - Schermerhorn subway station.

Nearest Transit: G, C, & A trains at Hoyt - Schermerhorn and the B25, B26, B38, B52, B45, B63, B67, B41, & B65 bus lines.

Nearby tenants include Target, IHOP, Dollar Tree, Primark, Chipotle, Burlington, Champs Sports, Whole Foods Market, Trader Joe's, Burger Village, 7-Eleven, H&M, Planet Fitness, KPOT Korean BBQ & Hot Pot, lululemon, Gong Cha, Fogo de Chão Brazilian Steakhouse, The Timberland Stoop, Stack'd Burger, and more!

Main Highlights

- ▶ Wraparound frontage
- ▶ High ceiling
- ▶ Multiple means of Egress
- ▶ Prime Downtown Brooklyn
- ▶ Heavy foot/car traffic
- ▶ Down the block from City Point, Fulton Mall



162,891 SF

Total Building Size



35,680 SF

Lot Size



C5-4, DB

Zoning

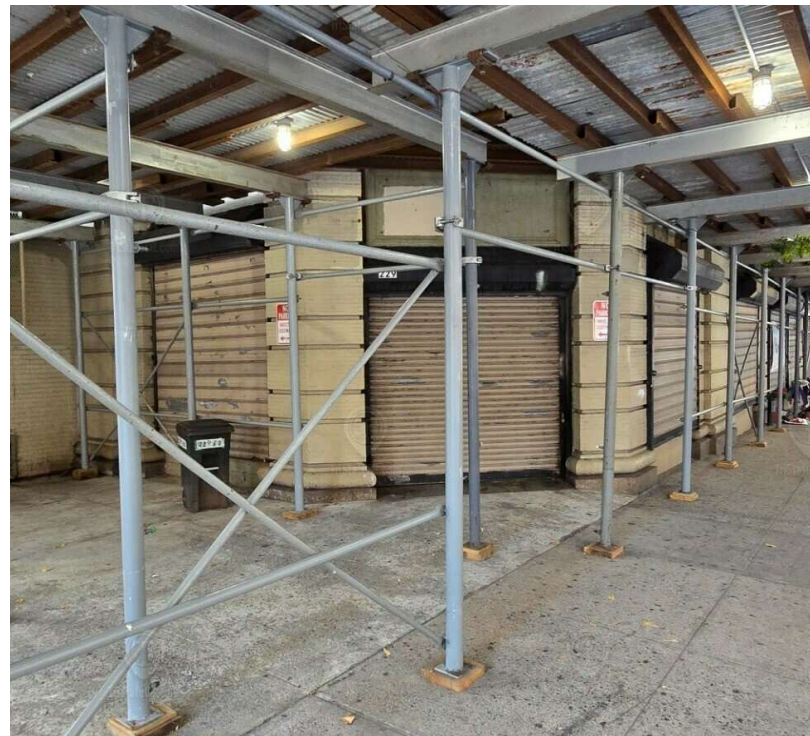
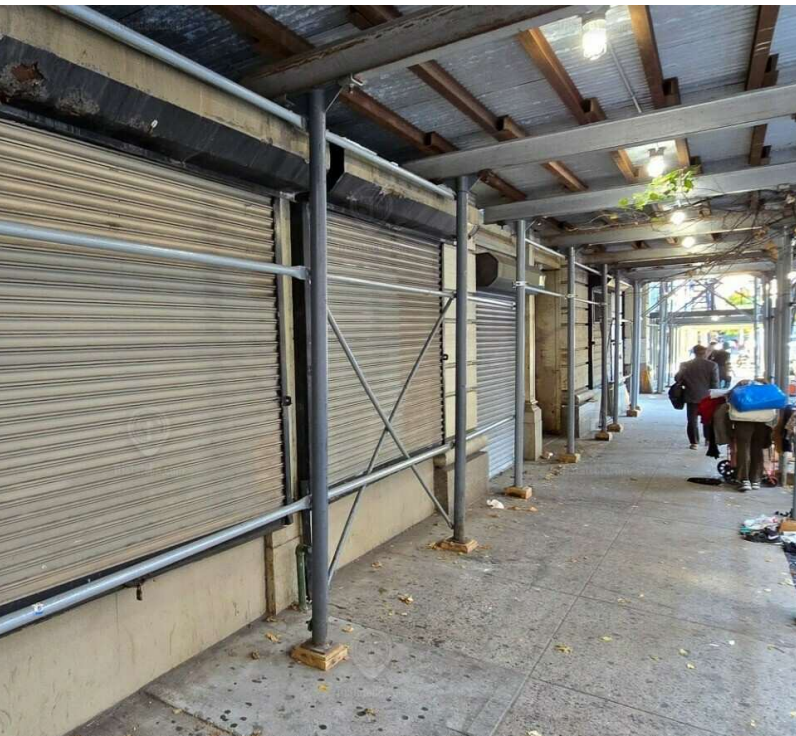
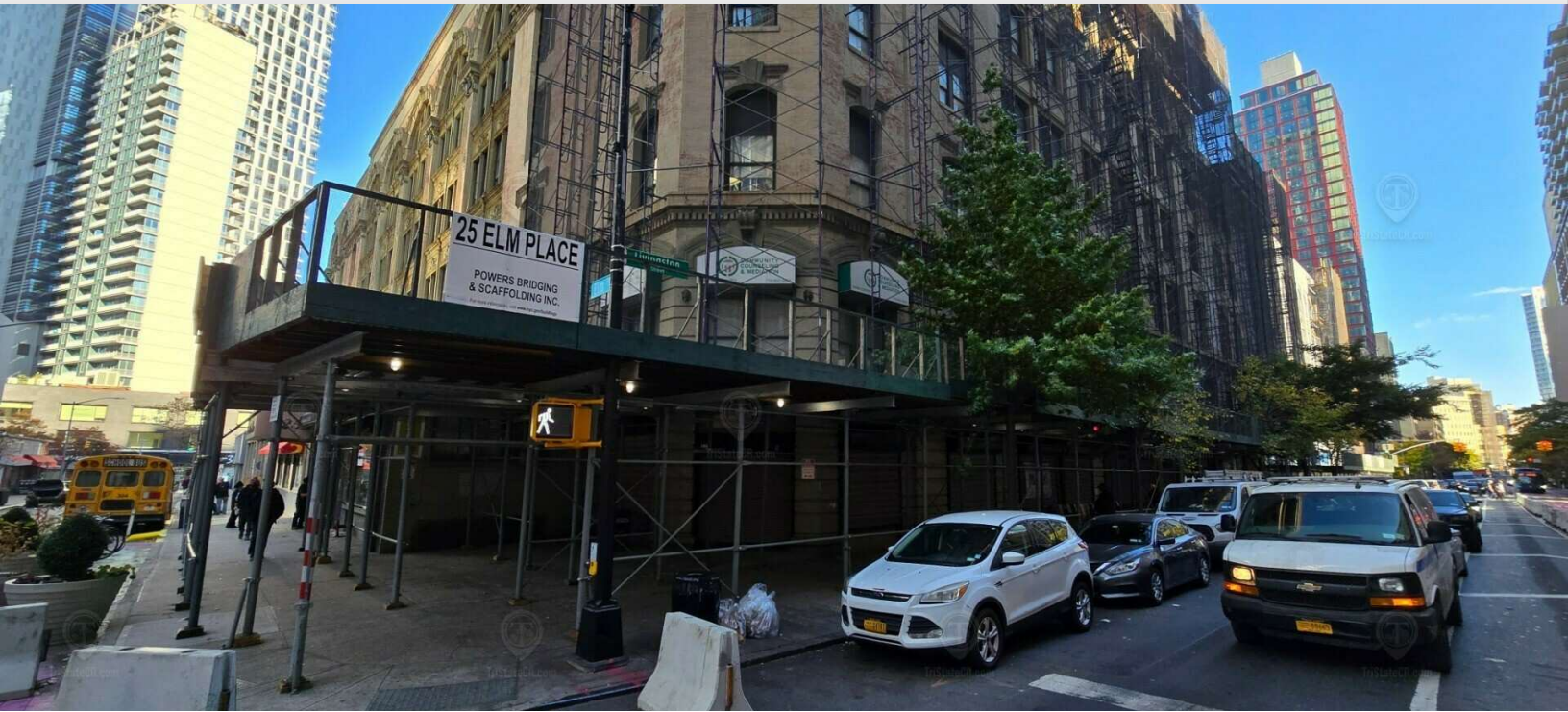
FOR LEASE • 5,500 SF • For Pricing

Call: 718-437-6100

Shlomi Bagdadi
📞 718.437.6100
sb@tristatecr.com

Leo Beda
📞 718.437.6100
Leo.B@tristatecr.com

Broker is relying on Landlord or other Landlord-supplied sources for the accuracy of said information and has no knowledge of the accuracy of it. Broker makes no representation and/or warranty, expressed or implied, as to the accuracy of such information.



FOR LEASE • 5,500 SF • For Pricing

Call: 718-437-6100

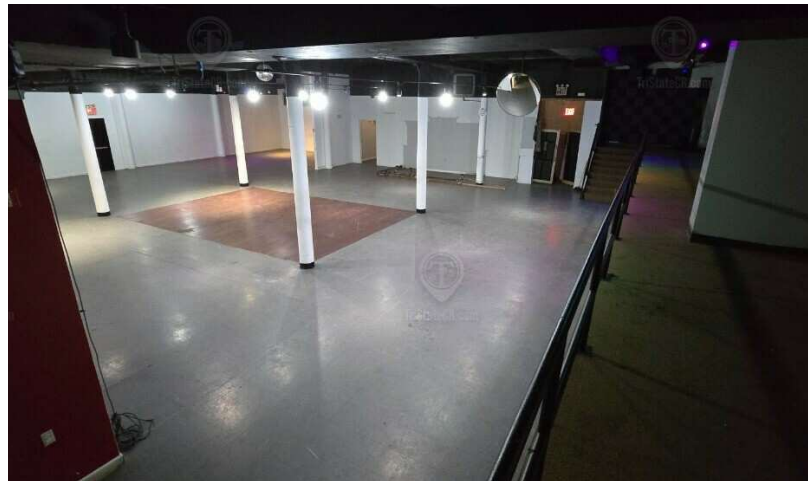
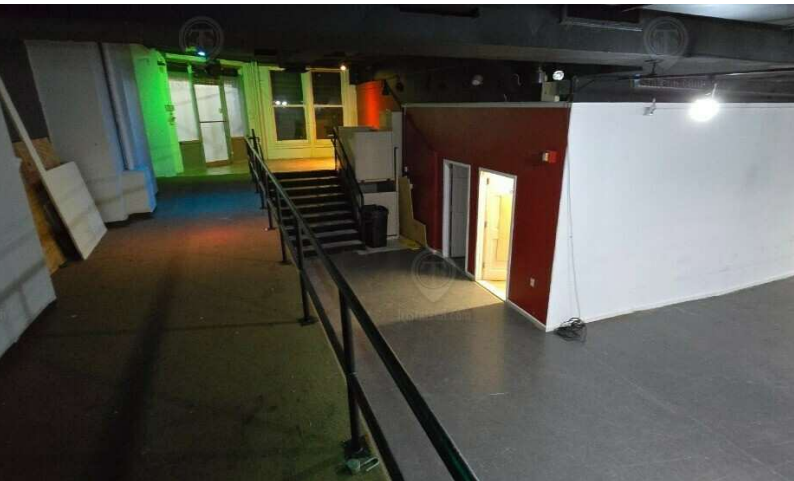
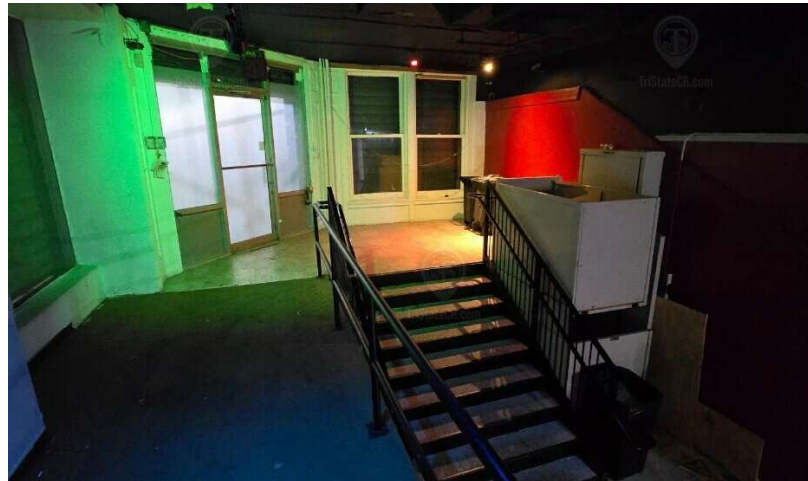
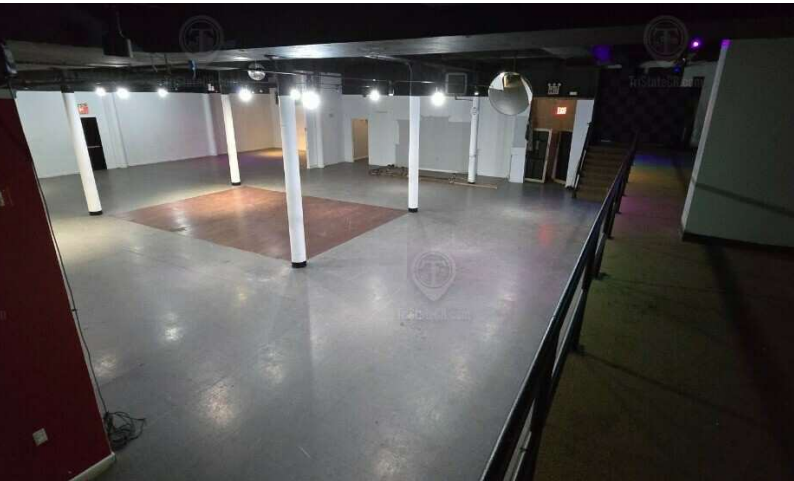
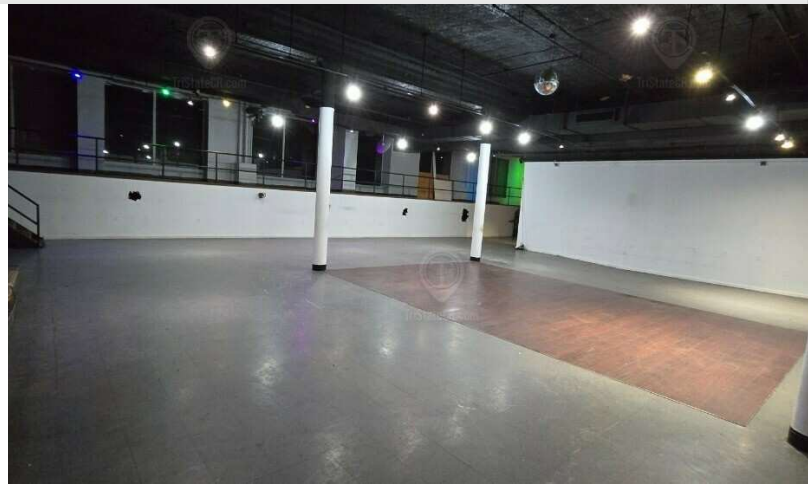
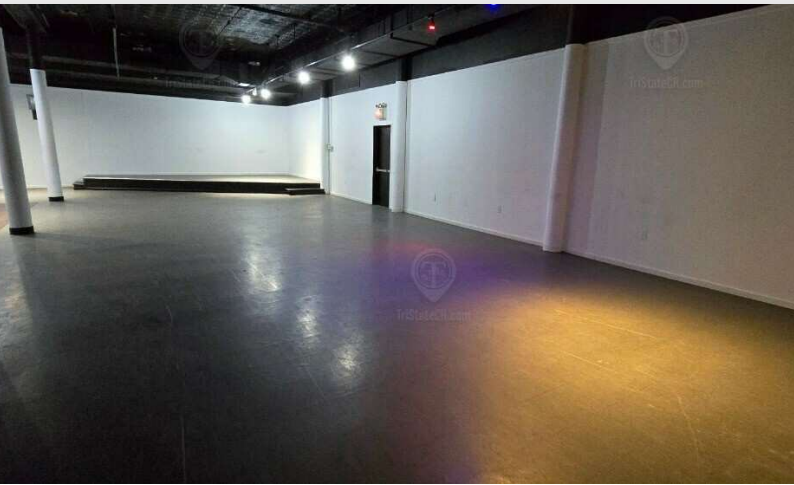
Shlomi Bagdadi
☎ 718.437.6100
sb@tristatecr.com

Leo Beda
☎ 718.437.6100
Leo.B@tristatecr.com

Broker is relying on Landlord or other Landlord-supplied sources for the accuracy of said information and has no knowledge of the accuracy of it. Broker makes no representation and/or warranty, expressed or implied, as to the accuracy of such information.

Additional Photos

229 Livingston Street, Brooklyn, NY 11201



FOR LEASE • 5,500 SF • For Pricing

Call: 718-437-6100

Shlomi Bagdadi
📞 718.437.6100
sb@tristatecr.com

Leo Beda
📞 718.437.6100
Leo.B@tristatecr.com

Broker is relying on Landlord or other Landlord-supplied sources for the accuracy of said information and has no knowledge of the accuracy of it. Broker makes no representation and/or warranty, expressed or implied, as to the accuracy of such information.



FOR LEASE • 5,500 SF • For Pricing

Call: 718-437-6100

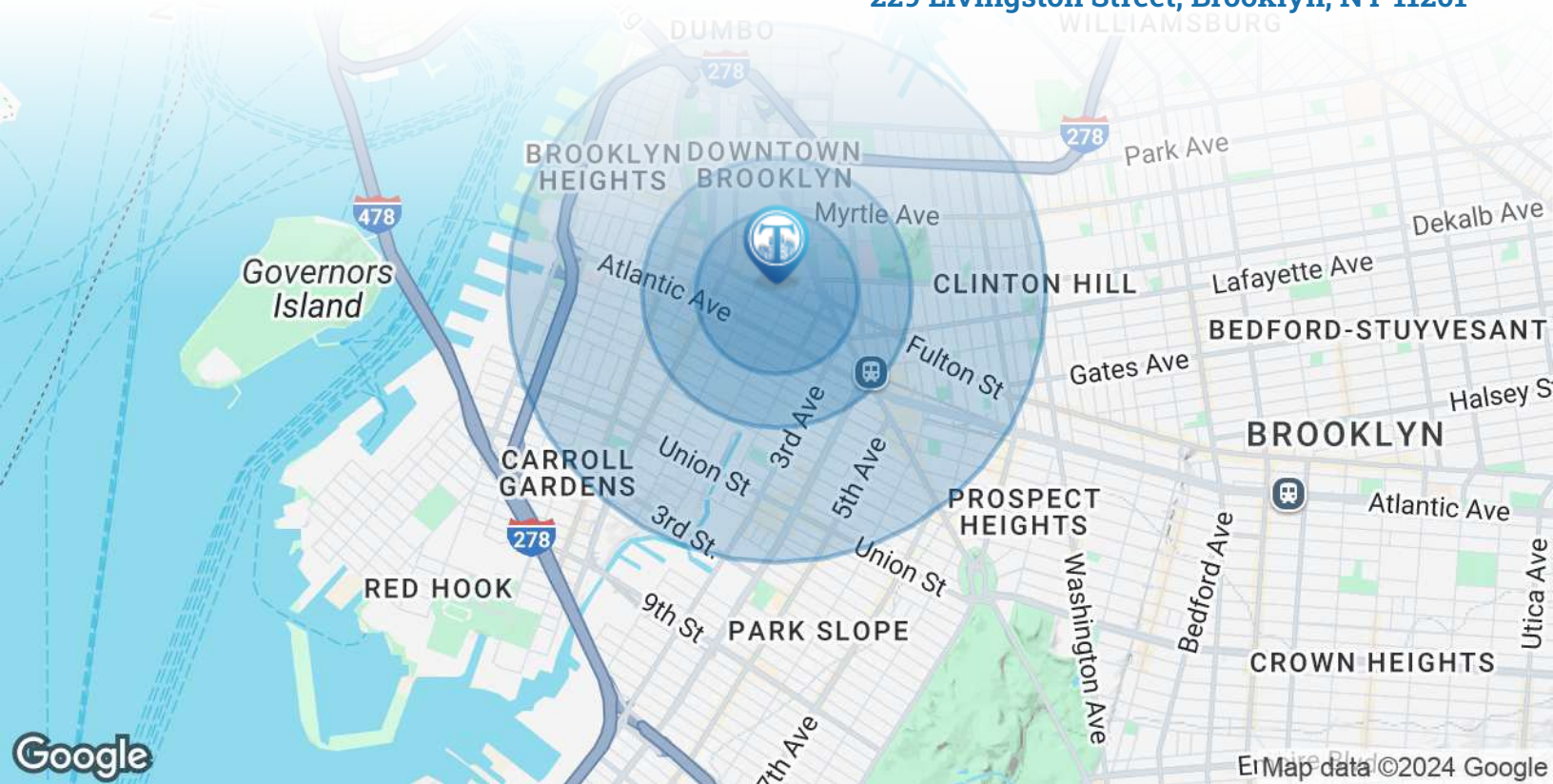
Shlomi Bagdadi
 718.437.6100
 sb@tristatecr.com

Leo Beda
 718.437.6100
 Leo.B@tristatecr.com

Broker is relying on Landlord or other Landlord-supplied sources for the accuracy of said information and has no knowledge of the accuracy of it. Broker makes no representation and/or warranty, expressed or implied, as to the accuracy of such information.

Area Demographics

229 Livingston Street, Brooklyn, NY 11201



POPULATION	0.3 MILES	0.5 MILES	1 MILE
Total Population	15,144	47,698	155,197
Average Age	35	37	38
Average Age (Male)	35	36	37
Average Age (Female)	35	37	39
HOUSEHOLDS & INCOME	0.3 MILES	0.5 MILES	1 MILE
Total Households	7,600	22,564	71,731
# of Persons per HH	2	2.1	2.2
Average HH Income	\$191,682	\$185,258	\$192,083
Average House Value	\$1,409,646	\$1,272,067	\$1,432,548



155,197

People within 1 Mile



\$192,083

Avg Household Income

FOR LEASE • 5,500 SF • For Pricing

Call: 718-437-6100

Shlomi Bagdadi
 📞 718.437.6100
 sb@tristatecr.com

Leo Beda
 📞 718.437.6100
 Leo.B@tristatecr.com

Broker is relying on Landlord or other Landlord-supplied sources for the accuracy of said information and has no knowledge of the accuracy of it. Broker makes no representation and/or warranty, expressed or implied, as to the accuracy of such information.

For Lease



TriStateCR.com

**5,500 SF | 229 Livingston Street
Unique Corner Retail With
Wraparound Frontage For Lease**

5,500 SF • For Pricing **Call: 718-437-6100**

229 Livingston Street • Brooklyn • NY

Shlomi Bagdadi
☎ 718.437.6100
sb@tristatecr.com

Leo Beda
☎ 718.437.6100
Leo.B@tristatecr.com

