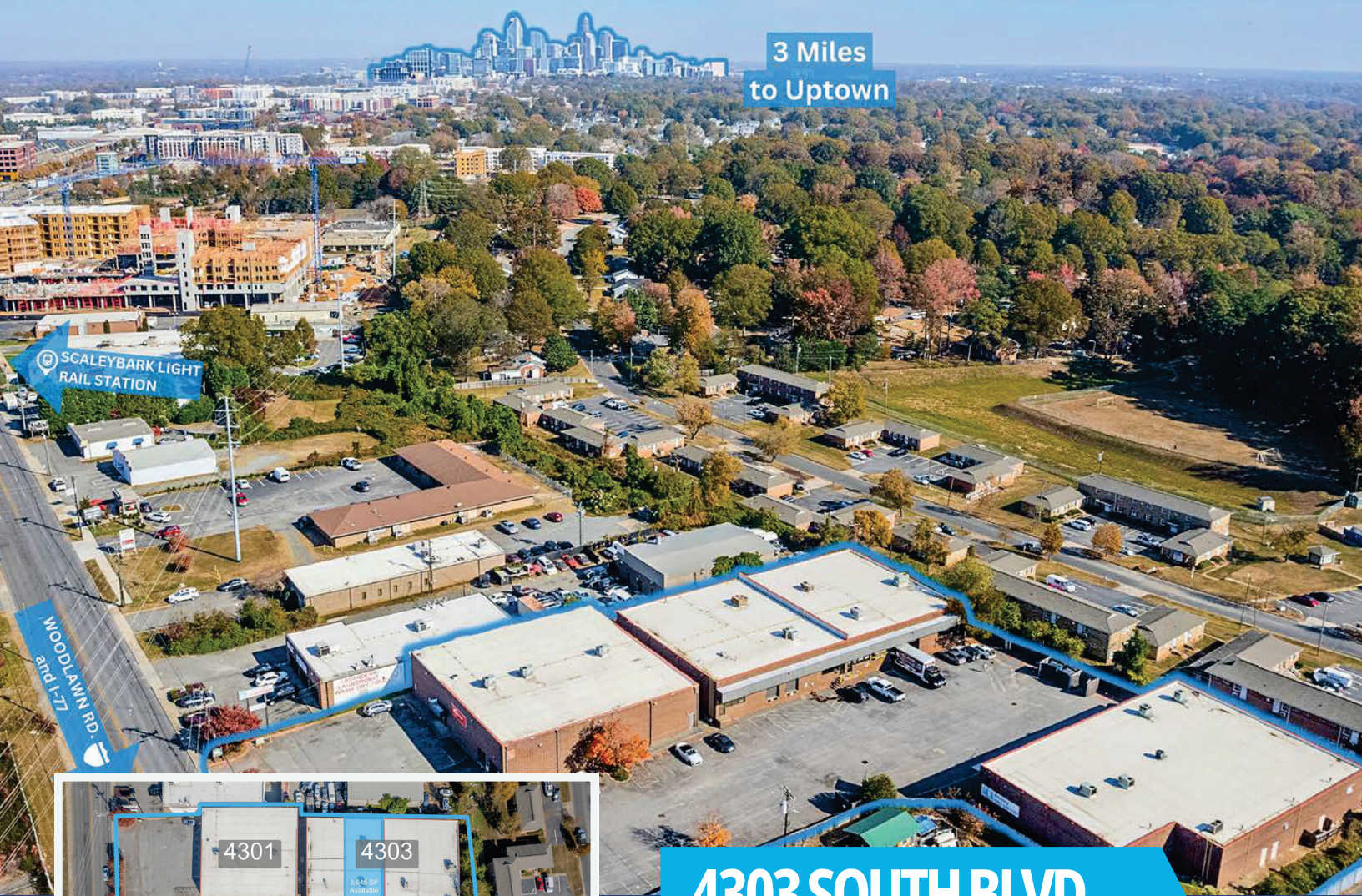




COLONY
COMMERCIAL

WAREHOUSE/RETAIL FOR LEASE IN LOWER SOUTH END

3 Miles
to Uptown



4303 SOUTH BLVD.

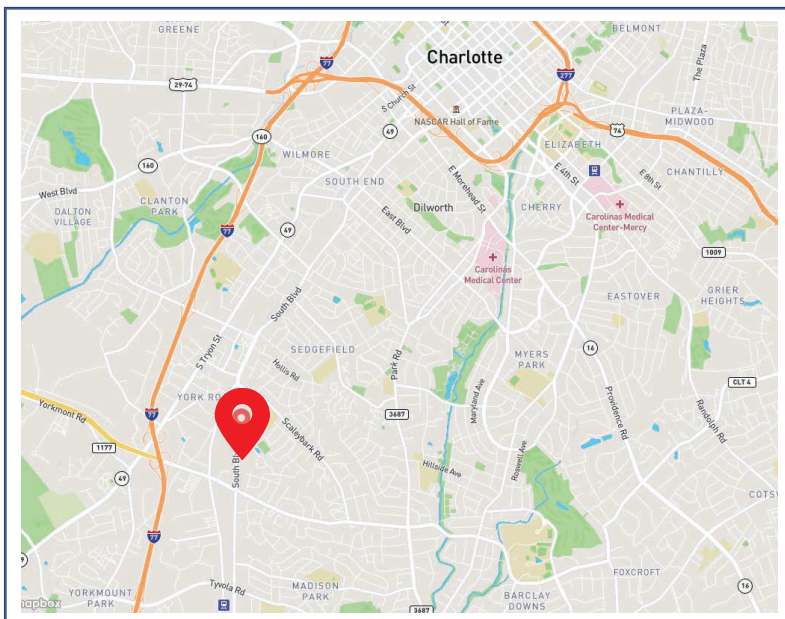
South End is one of the most dynamic live, work, play communities in North Carolina and in the surrounding area there are over 20 breweries, restaurants, coffee shops and entertainment establishments for tenants and employees to enjoy. South Blvd. Business Park features functional warehouse/retail spaces to meet the business needs of companies who value a superb central location.

WILLIAM MAXWELL
704-575-1130
wmaxwell@colony-commercial.com

Excellent accessibility:

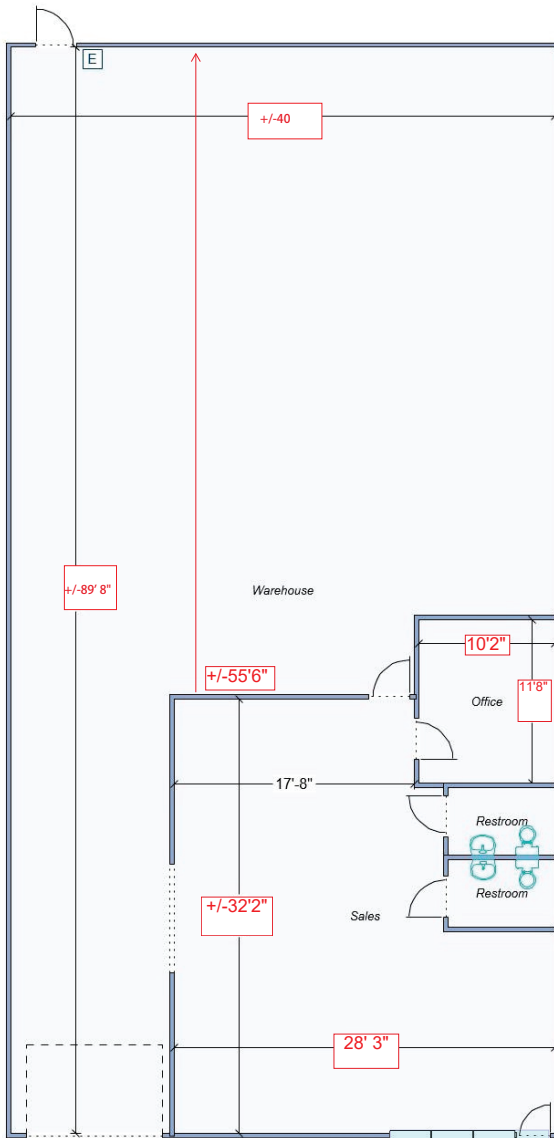
Located between Scaleybark and Woodlawn Rd., South Blvd. Business Park is minutes from downtown, desirable residential neighborhoods and I-77. The property is a quick walk to the light rail station at Scaleybark.

Nearby neighborhoods include Sedgefield, Montford, Dilworth, Myers Park, South Park, Barclay Downs and Madison Park.



NEARBY AMENITIES





7'10" w X 10'h
DOCK HIGH

Available Space:

- ★ 4303 South Blvd. Suite B
- ★ ~3,645 SF
- ★ ~956 SF Office
- ★ ~2,869 SF Warehouse
- ★ 1 Dock High Doors
- ★ 16' Clear Height in Warehouse






COLONY
COMMERCIAL

WILLIAM MAXWELL

704-575-1130
wmaxwell@colony-commercial.com

