



Eagle Creek Land

Brandon, SD 57005

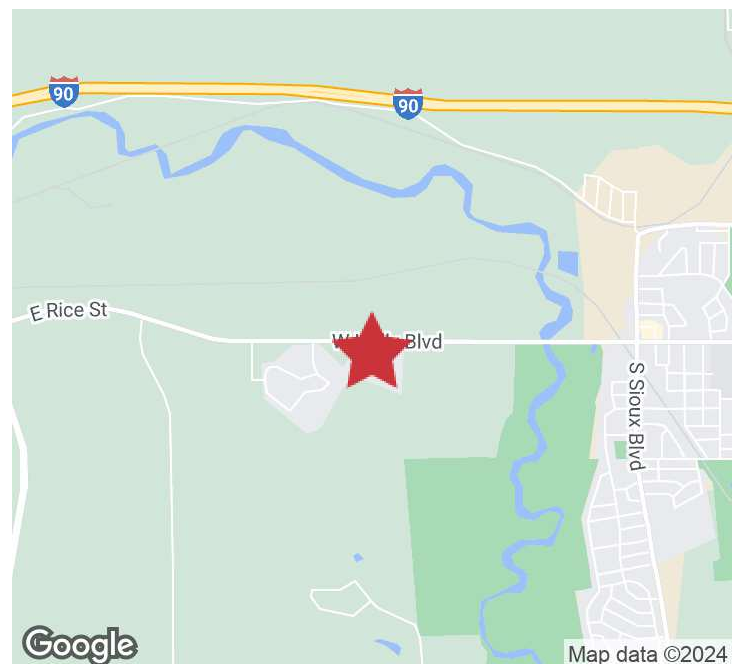
PROPERTY HIGHLIGHTS

- Site accommodates a mixed use development that fits 22 multifamily units & 4 retail spaces
- Land has sewer and utilities to site
- Site design blueprints/building plans included
- Construction proposal included to qualified prospects
- Site has a conditional use permit allowing mixed-use development
- Contact listing brokers for more information on building and site plans

LOCATION DESCRIPTION

Located on Holly Boulevard, main road into Brandon, SD Area neighbors include Sioux Valley Energy, Heritage Lutheran Church, Kwik Star, OdeCo, LLC

Sale Price	\$660,000 (\$15.36/SF)
Total Lot Size	0.99 AC (42,967 SF)
Real Estate Taxes	\$1,499.68



PARCEL
EAGLE CREEK LAND
Brandon, SD 57005

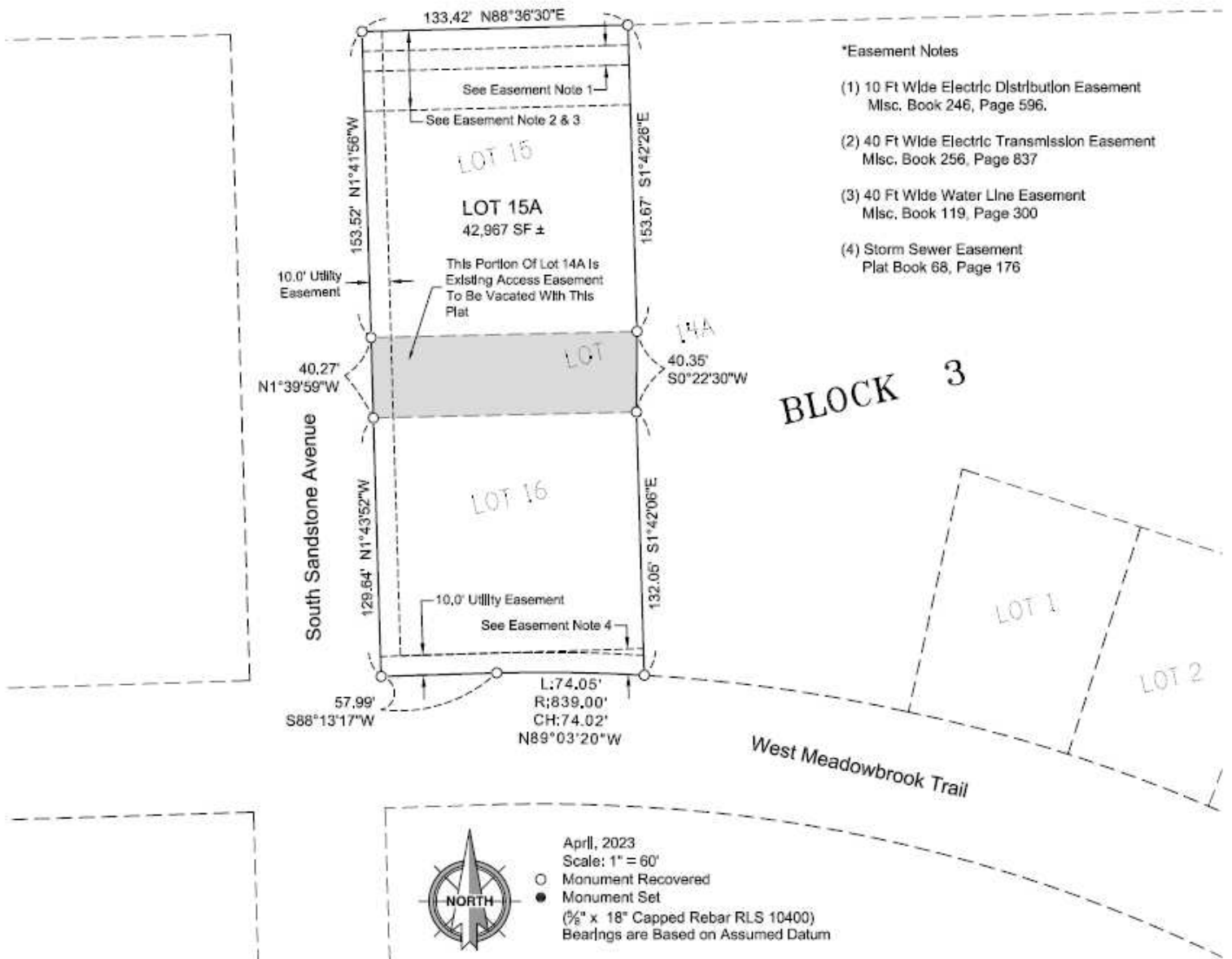
FOR SALE
Land



PLAT OF
LOT 15A IN BLOCK 3 OF EAGLE CREEK ADDITION TO THE CITY OF BRANDON,
MINNEHAHA COUNTY, SOUTH DAKOTA.

THIS PLAT TO VACATE AND REPLAT LOT 15, 16 AND A PORTION OF LOT 14A, ALONG WITH THE ACCESS EASEMENT SHOWN ON LOT 14A, IN BLOCK 3 OF "PLAT OF EAGLE CREEK ADDITION TO THE CITY OF BRANDON, MINNEHAHA COUNTY, SOUTH DAKOTA (LOTS 14A, 15 & 16 IN BLOCK 3)", FILED FOR RECORD ON AUGUST 13TH, 2021 AT 8:00 A.M. IN PLAT BOOK 83, PAGE 333.

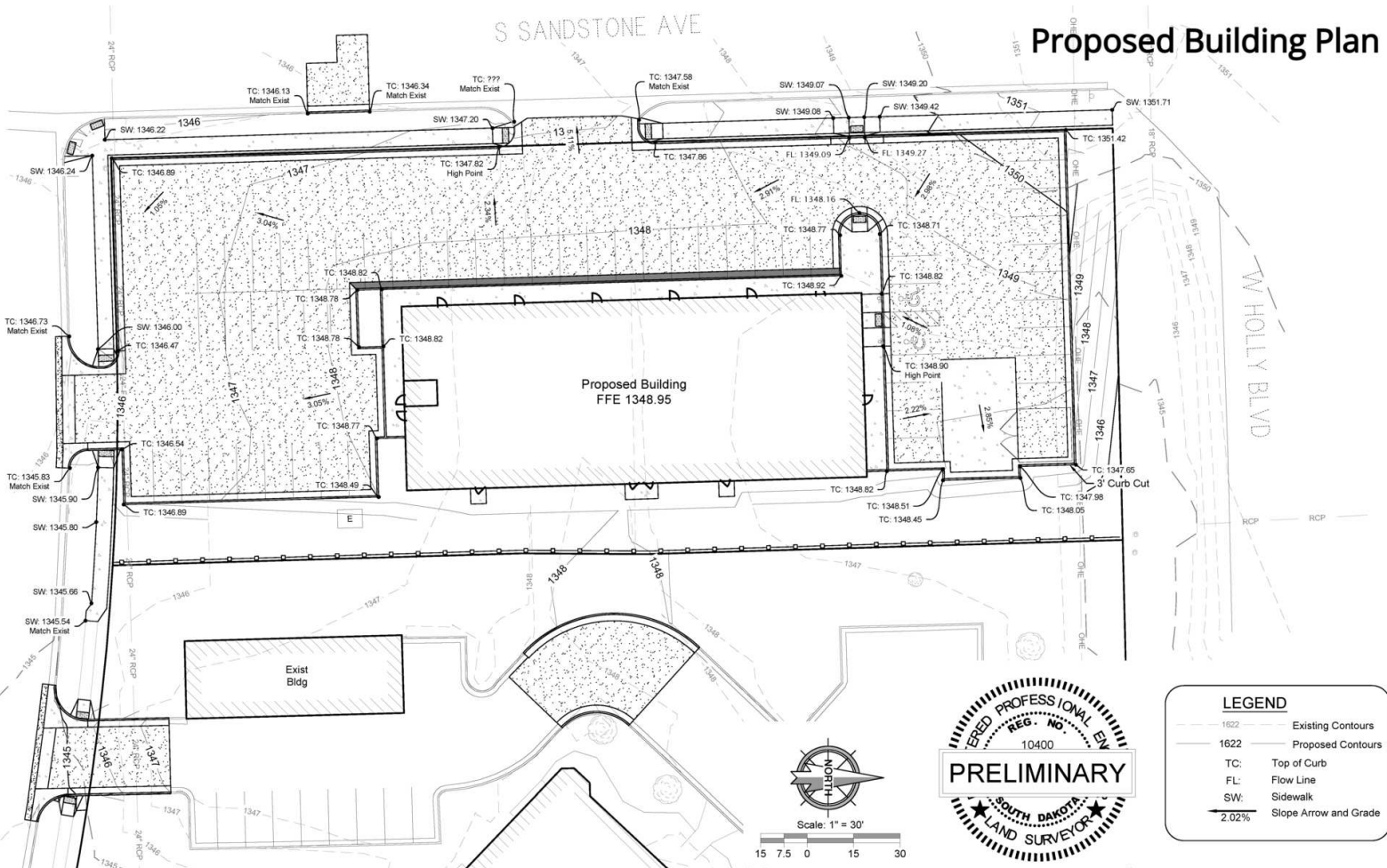
West Holly Boulevard



PROPOSED BUILDING PLAN
EAGLE CREEK LAND
 Brandon, SD 57005

FOR SALE
 Land

Proposed Building Plan



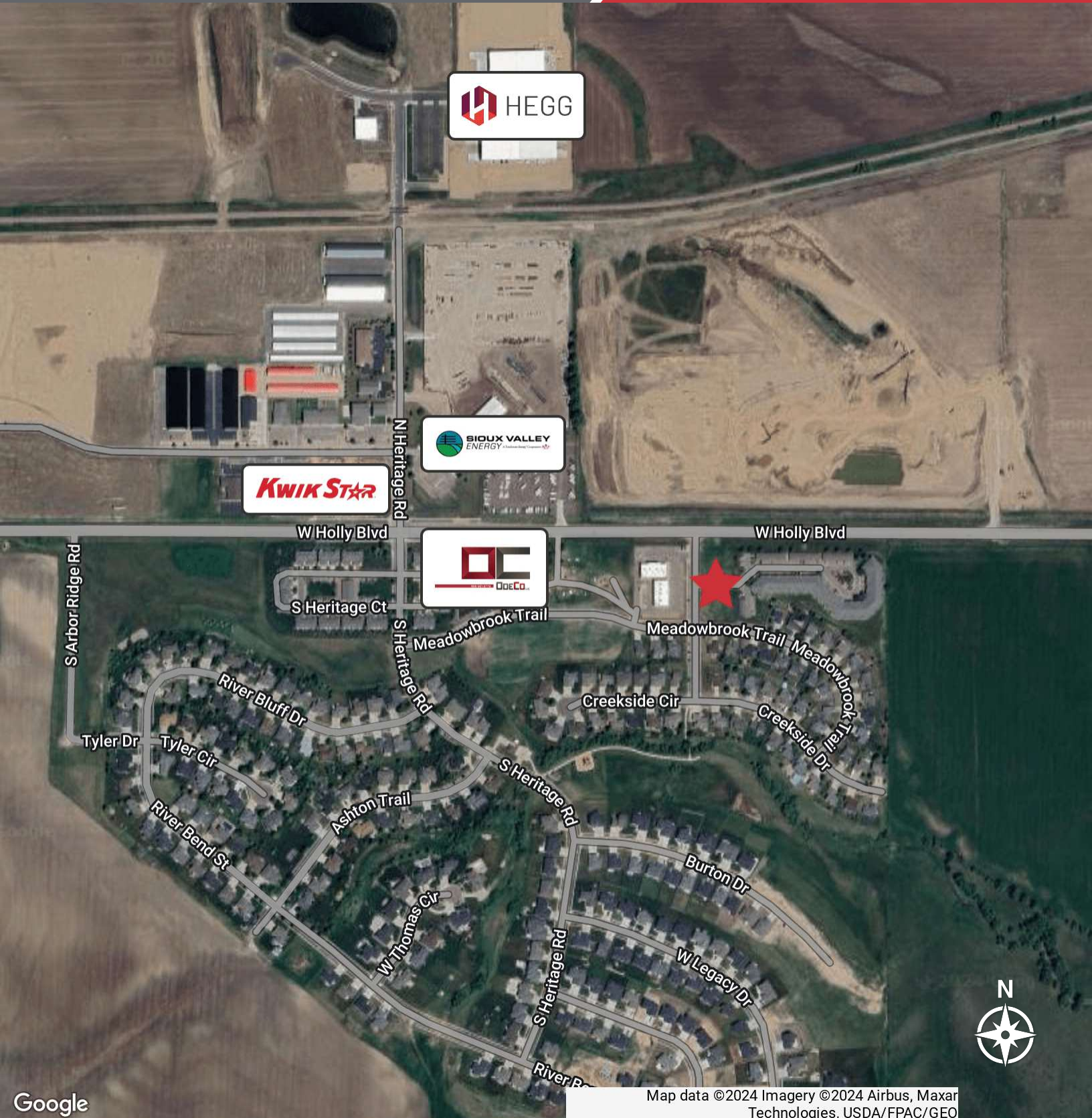
AERIAL

EAGLE CREEK LAND

Brandon, SD 57005

FOR SALE

Land



Google

Map data ©2024 Imagery ©2024 Airbus, Maxar Technologies, USDA/FPAC/GEO