

NORTH FORT MYERS SHOPPING CENTER

13761-13871 N CLEVELAND AVE | N FORT MYERS, FL 33903

Retail for Lease



LQ Commercial
REAL ESTATE SERVICES

LQCRE.COM



**CALL FOR
RATES**



**11,754-15,957 SF
SIZE**



**5.01/1,000
PARKING RATIO**

- Anchor Space Available
- Located on N Cleveland Ave (US 41) between Hancock Bridge Pkwy and Pondella Rd
- Access from N Cleveland Ave, Hancock Bridge Pkwy and Pondella Rd
- Attractive rates in an established corridor
- N Cleveland Ave Daily Traffic of 39,000 CPD



[LQCRE.COM/NFM-SHOPPING-CENTER](https://www.lqcre.com/nfm-shopping-center)



5-MILE POPULATION

145,533



5-MILE INCOME

\$86,704



5-MILE EMPLOYEES

73,308



1614 Colonial Blvd #101
Fort Myers, FL, 33907

[LQCRE.COM](https://www.lqcre.com)

Jessica McEvoy
Senior Associate

D: 239.333.4374

C: 239.220.1535

jmcevoy@lqcre.com

Tom Strauss

Principal & Managing Director

D: 239.333.4370

C: 239.822.9978

tstrauss@lqcre.com

NORTH FORT MYERS SHOPPING CENTER

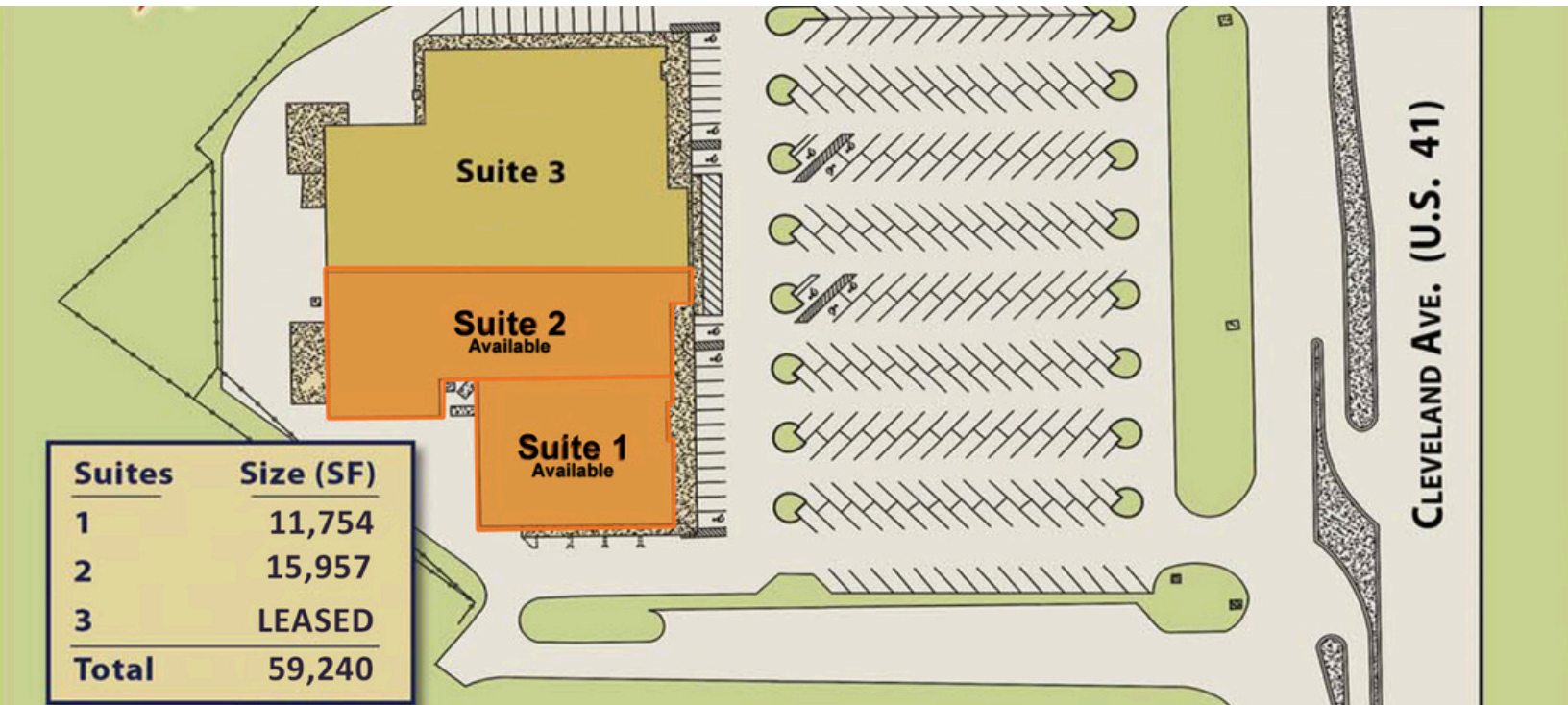
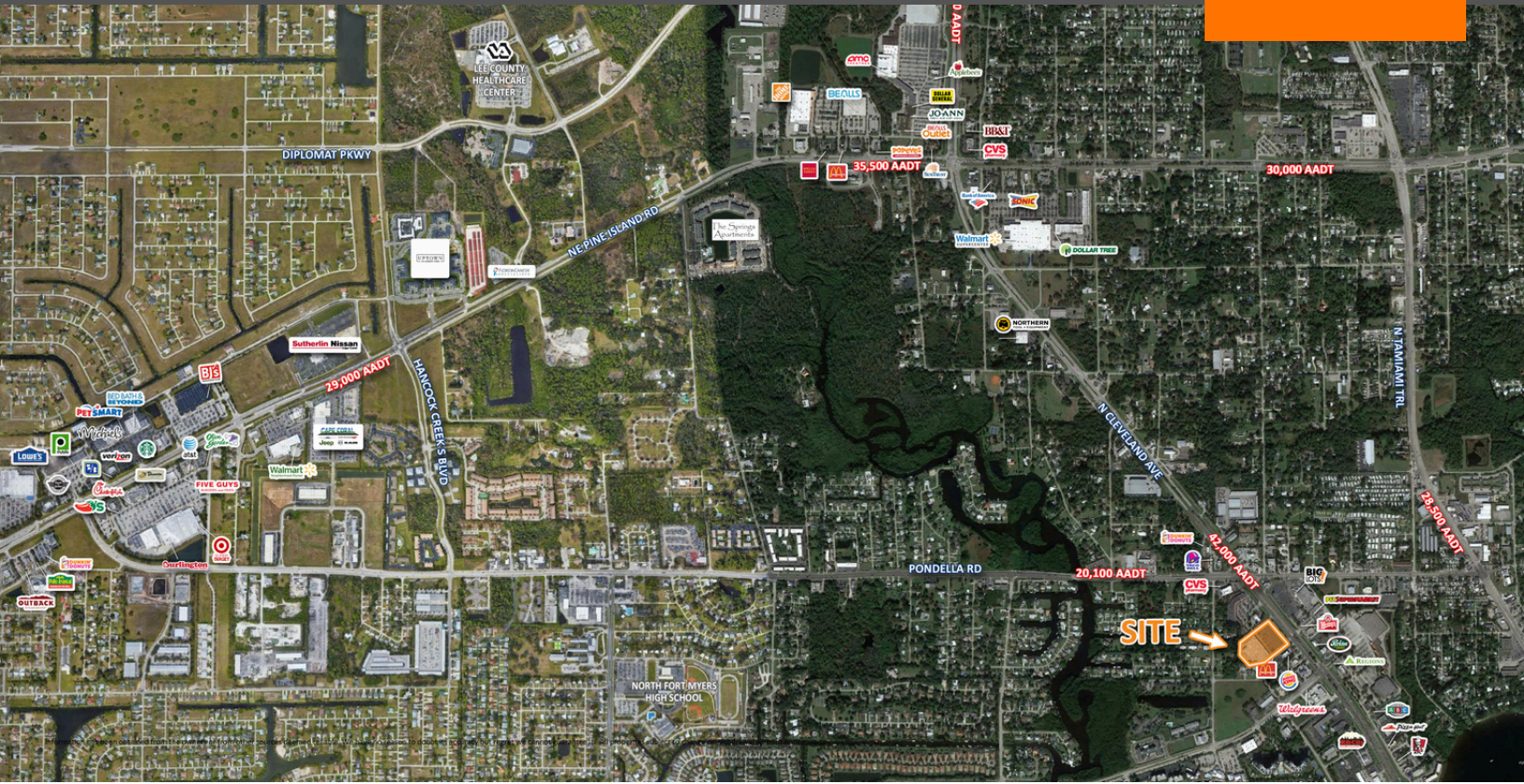
13761-13871 N CLEVELAND AVE | N FORT MYERS, FL 33903

Retail for Lease



LQ Commercial
REAL ESTATE SERVICES

LQCRE.COM



LQ Commercial
REAL ESTATE SERVICES
1614 Colonial Blvd #101
Fort Myers, FL, 33907
LQCRE.COM

Jessica McEvoy
Senior Associate
D: 239.333.4374
C: 239.220.1535
jmcevoy@lqcre.com

Tom Strauss
Principal & Managing Director
D: 239.333.4370
C: 239.822.9978
tstrauss@lqcre.com