

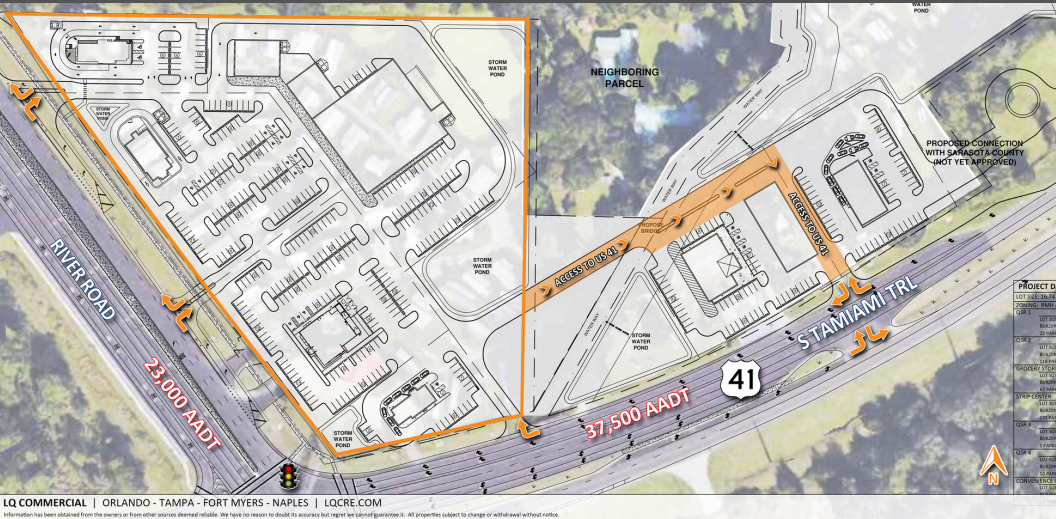
# MYAKKA STATION

9001 S TAMiami TRAIL | VENICE, FL 33907

Retail for Lease



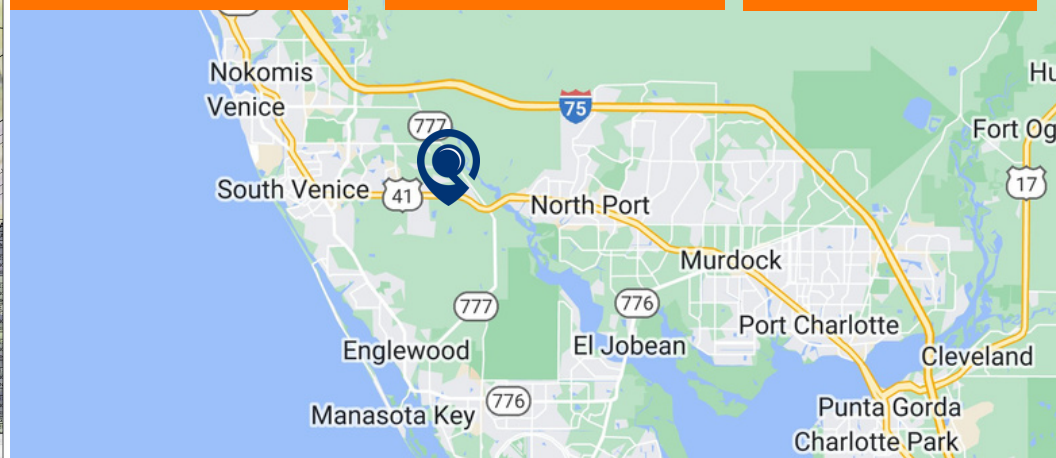
LQ Commercial  
REAL ESTATE SERVICES



[WEBSITE](#)

[GOOGLE TOUR](#)

[LQCRE.COM](#)



**RETAIL  
FOR LEASE**



**GROUND LEASE /  
BUILD TO SUIT**



**CALL FOR  
RATES**



**PAD SIZE:  
1 - 4 ACRES**

- Premier Retail Corner of US Highway 41 & River Road.
- Ground Lease or Build to Suit!
- Across From “Wellen Park” (36,630 Homes At Buildout).
- Traffic Generators: Costco, Sarasota Memorial, Atlanta Braves Spring Training, State College of FL, College Prep Academy & More.



3-MILE POPULATION

**13,567**



3-YR HISTORIC GROWTH

**6.6%**



3-MILE INCOME

**\$117,636**



3-MILE MEDIAN AGE

**59.6**

[PROPERTIES.LQCRE.COM/MYAKKA-RIVER-CENTER](https://properties.lqcre.com/myakka-river-center)



1614 Colonial Blvd #101  
Fort Myers, FL 33907

[LQCRE.COM](#)

**Bob Pekol**  
Senior Associate  
D: (239) 333-4369  
C: (239) 872-7777  
[bpekol@lqcre.com](mailto:bpekol@lqcre.com)

# MYAKKA STATION

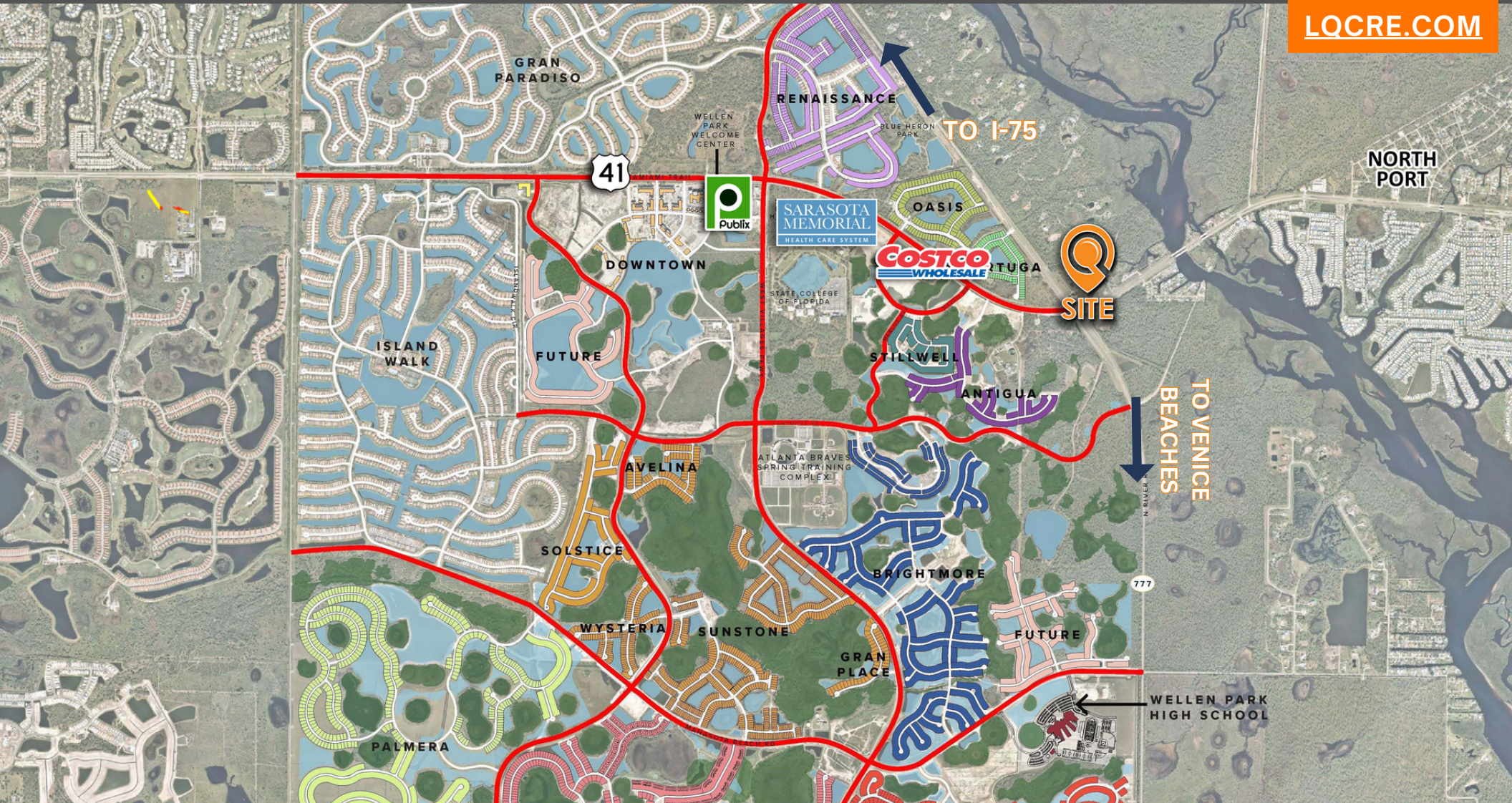
9001 S TAMIAMI TRAIL | VENICE, FL 33907

Retail for Lease



**LQ Commercial**  
REAL ESTATE SERVICES

[LQCRE.COM](http://LQCRE.COM)



1614 Colonial Blvd #101  
Fort Myers, FL 33907

[LQCRE.COM](http://LQCRE.COM)

**Bob Pekol**  
Senior Associate  
D: (239) 333-4369  
C: (239) 872-7777  
[bpekol@lqcre.com](mailto:bpekol@lqcre.com)

# MYAKKA STATION

9001 S TAMIAMI TRAIL | VENICE, FL 33907

Retail for Lease



**LQ Commercial**  
REAL ESTATE SERVICES

[LQCRE.COM](http://LQCRE.COM)



1614 Colonial Blvd #101  
Fort Myers, FL 33907

[LQCRE.COM](http://LQCRE.COM)

**Bob Pekol**  
Senior Associate  
D: (239) 333-4369  
C: (239) 872-7777  
[bpekol@lqcre.com](mailto:bpekol@lqcre.com)