

3120 W. 12th Street Storage

Sioux Falls, SD 57104

PROPERTY HIGHLIGHTS

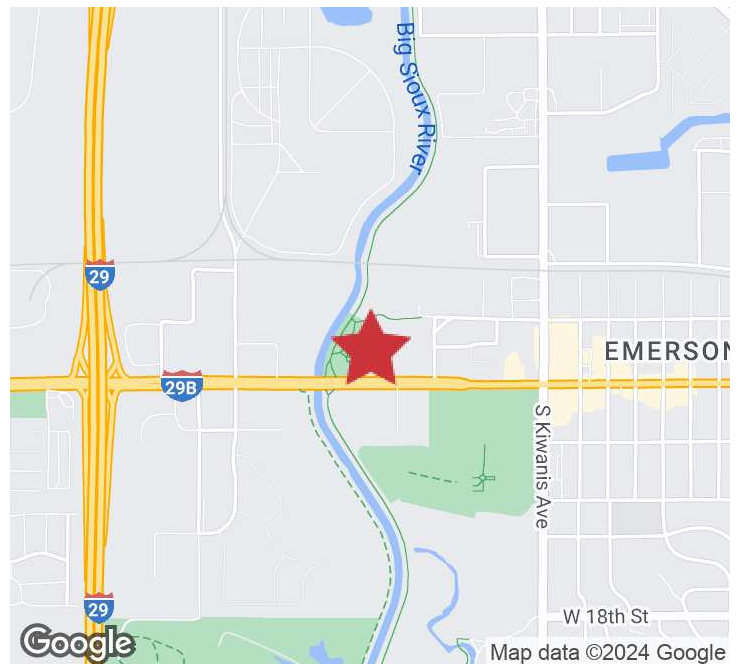
- Rare storage suite available immediately!
- One dock-high door
- One pick-up high door
- Great access to I-29 & 12th Street
- Located on the west side of the Harbor Freight/Dollar Tree building on W. 12th Street

LOCATION DESCRIPTION

Just west of I-29 - located on the west side of the Harbor Freight/Dollar Tree building on W. 12th Street

Area neighbors include: Dollar Tree, Harbor Freight, Biggs Bar, Stan Houston Equipment Company, Wells Fargo, Interstate All Battery Center

Lease Rate	\$750.00 PER MONTH
Unit Size	552 SF



CRAIG HAGEN, CCIM, SIOR
Senior Vice President
chagen@naisiouxfalls.com
605.310.4227

2500 W. 49th St. Suite 100
Sioux Falls, SD 57105
605.357.7100
naisiouxfalls.com

PHOTOS & FLOOR PLAN

3120 W. 12TH STREET STORAGE
Sioux Falls, SD 57104

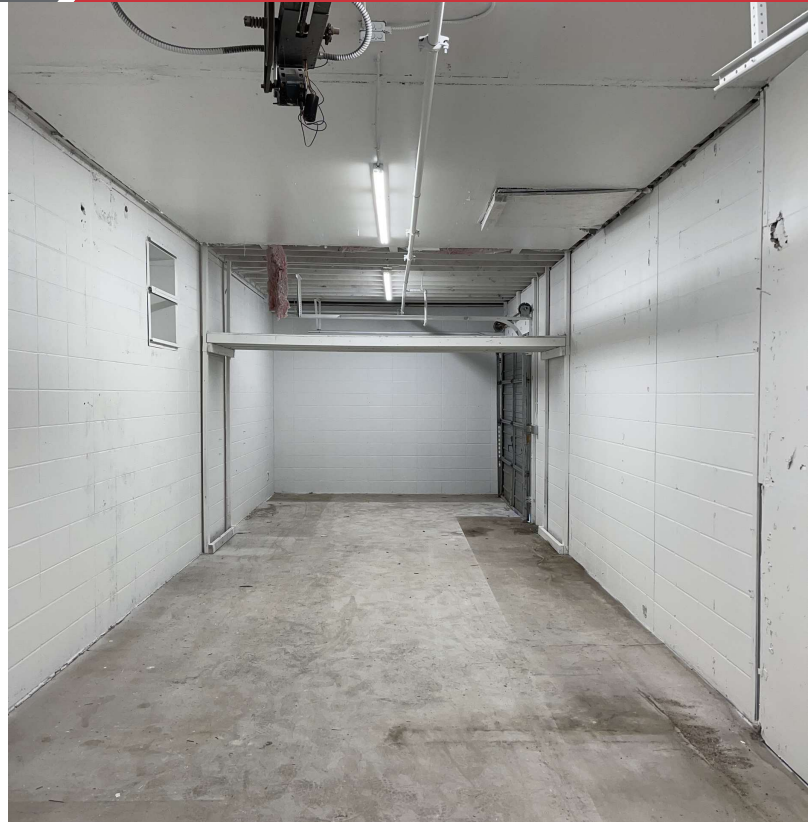
FOR LEASE

Storage Unit

8' x 8'
Pick-up high door

12' x 46'

8' x 8'
Dock-high door

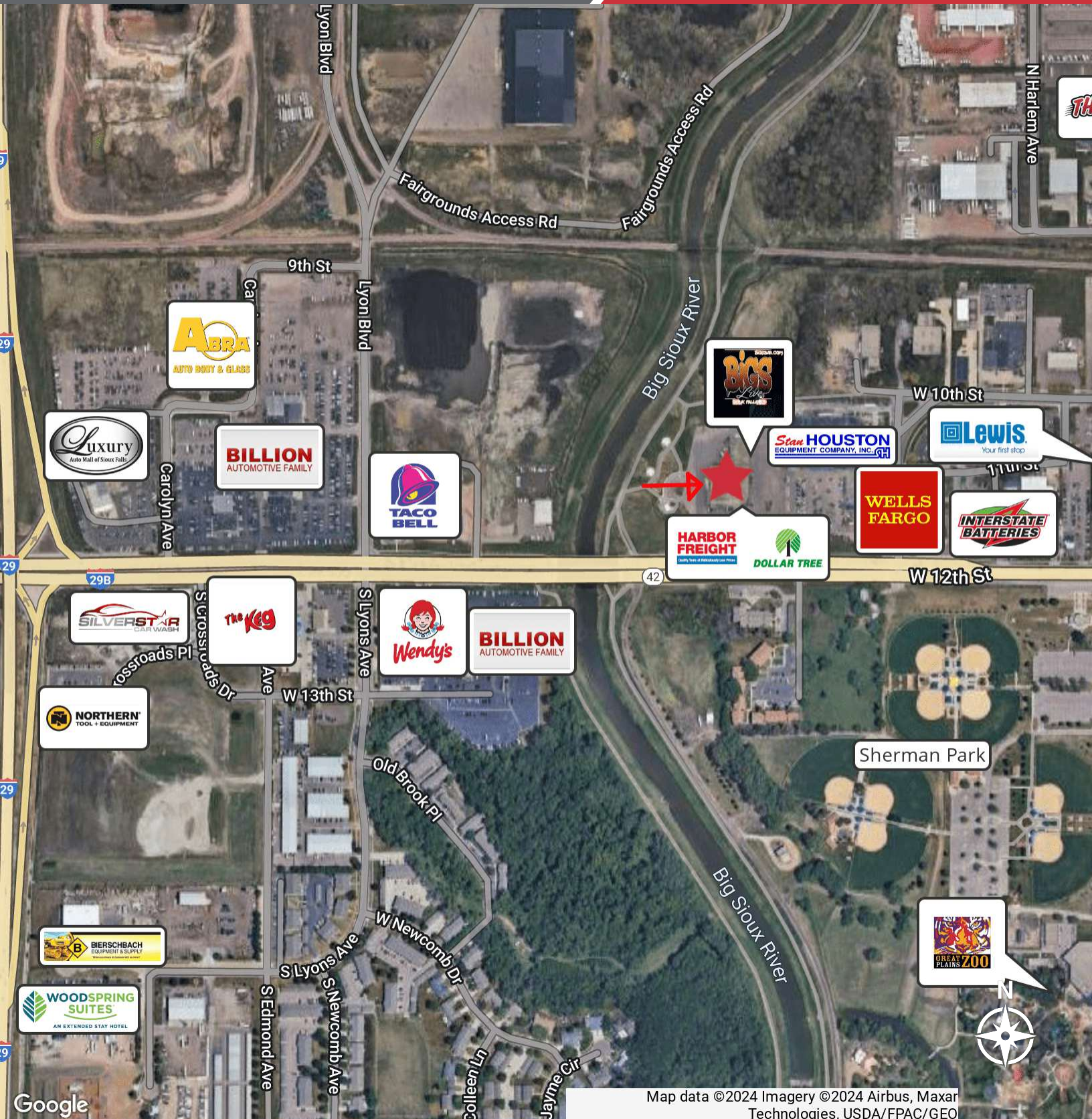


AERIAL

3120 W. 12TH STREET STORAGE
Sioux Falls, SD 7104

FOR LEASE

Storage Unit



Map data ©2024 Imagery ©2024 Airbus, Maxar Technologies, USDA/FPAC/GEO