



FOR LEASE

# 907 Kramer Ln

Austin, TX 78758

eXp Commercial | 9600 Great Hills Trl | Austin, TX 78759 |

**Daniel Eng | CCIM**

469.916.8888 x801  
daniel@engvest.com

**Debbie Tran**

512.698.0133  
debbie\_tran@live.com

**Calvin Wong | CCIM**

972.904.2888  
calvin@engvest.com

# FOR LEASE | 907 Kramer Ln

Austin, TX 78758



## Property Description

This lot is FULLY fenced and has substantial frontage on Kramer Ln. The office rests at the front of the property with several parking spots. Great property for alterations shop, massage, offices, and more.

## Location Description

Located a few blocks away at the intersection of N Lamar Blvd and W Braker Lane. This property is in between I 35 and The Domain offering easy access to many of Austin's prominent businesses and local attractions. Easy access to I 35, 183, and N Lamar.

## Offering Summary

Lease Rate:	Negotiable
Available SF:	1,100 SF
Lot Size:	0.92 Acres
Building Size:	1,100 SF

Demographics	1 Mile	3 Miles	5 Miles
Total Households	7,486	61,533	144,304
Total Population	18,771	140,606	320,894
Average HH Income	\$71,117	\$71,367	\$80,720

**Daniel Eng | CCIM**

469.916.8888 x801  
daniel@engvest.com

**Debbie Tran**

512.698.0133  
debbie\_tran@live.com

**Calvin Wong | CCIM**

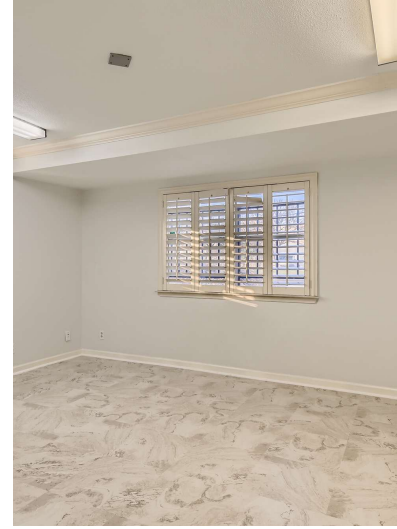
972.904.2888  
calvin@engvest.com



eXp Commercial, LLC, its direct and indirect parents and their subsidiaries (together, "We") obtained the information above from sources believed to be reliable, however, We have not verified its accuracy and make no guarantee, warranty or representation, expressed or implied, about such information. The information contained above is submitted subject to the possibility of errors, omissions, price changes, rental or other conditions, prior sale, lease or financing, or withdrawal without notice. Any projections, opinions, assumptions or estimates of the information contained above or provided in connection therewith, either expressed or implied, are for example only, and they may not represent current or future performance of the subject property. You, together with your tax and legal advisors, should conduct your own thorough investigation of the subject property and potential investment.

# FOR LEASE | 907 Kramer Ln

Austin, TX 78758



**Daniel Eng | CCIM**  
469.916.8888 x801  
daniel@engvest.com

**Debbie Tran**  
512.698.0133  
debbie\_tran@live.com

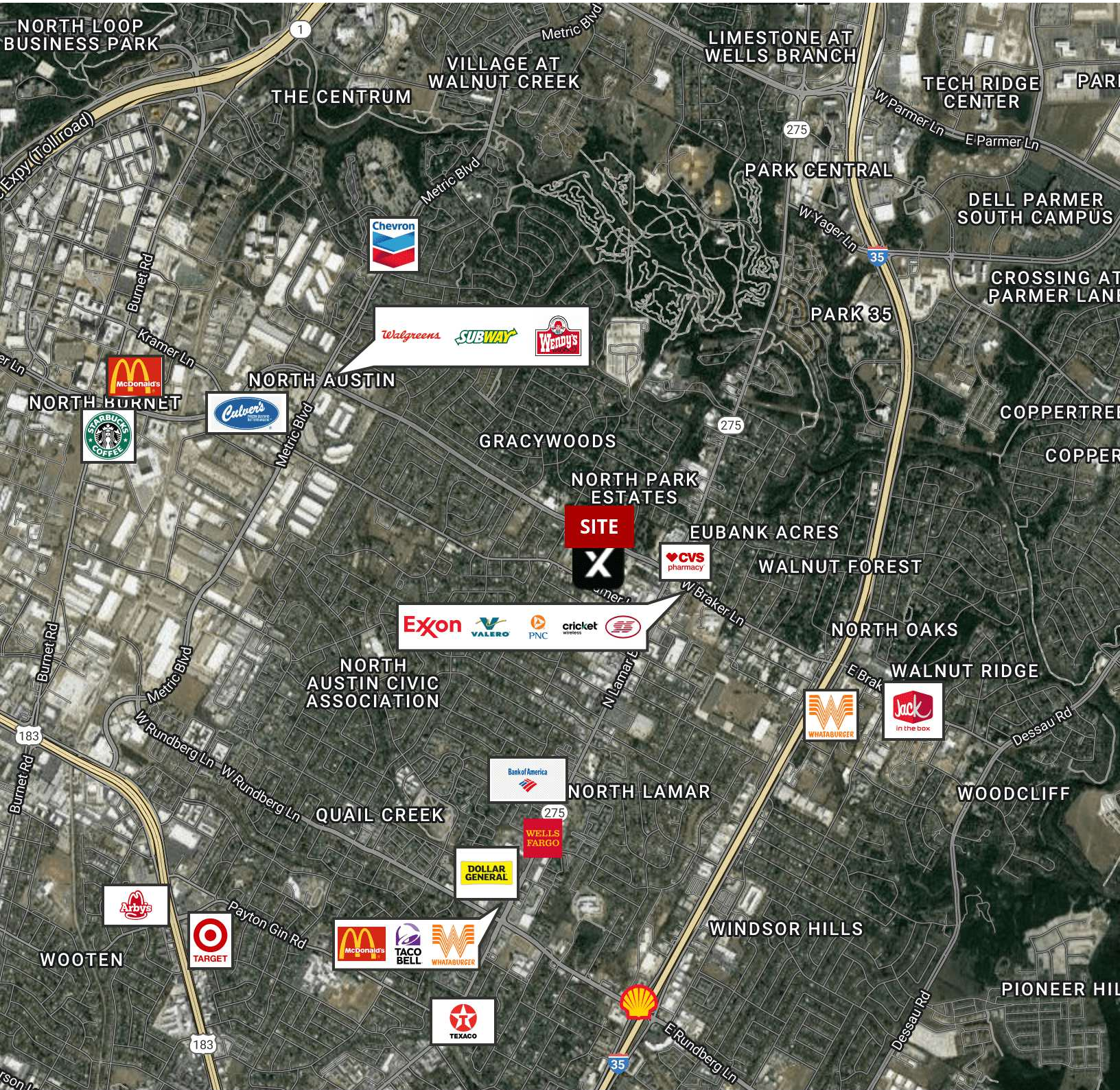
**Calvin Wong | CCIM**  
972.904.2888  
calvin@engvest.com



eXp Commercial, LLC, its direct and indirect parents and their subsidiaries (together, "We") obtained the information above from sources believed to be reliable, however, We have not verified its accuracy and make no guarantee, warranty or representation, expressed or implied, about such information. The information contained above is submitted subject to the possibility of errors, omissions, price changes, rental or other conditions, prior sale, lease or financing, or withdrawal without notice. Any projections, opinions, assumptions or estimates of the information contained above or provided in connection therewith, either expressed or implied, are for example only, and they may not represent current or future performance of the subject property. You, together with your tax and legal advisors, should conduct your own thorough investigation of the subject property and potential investment.

# FOR LEASE | 907 Kramer Ln

Austin, TX 78758



Map data © 2023 Google Imagery © 2023 , CAPCOG, CNES / Airbus, Landsat / Copernicus, Maxar Technologies, U.S. Geological Survey, USDA/FPAC/GEO

**Daniel Eng | CCIM**    **Debbie Tran**    **Calvin Wong | CCIM**  
469.916.8888 x801    512.698.0133    972.904.2888  
daniel@engvest.com    debbie\_tran@live.com    calvin@engvest.com



eXp Commercial, LLC, its direct and indirect parents and their subsidiaries (together, "We") obtained the information above from sources believed to be reliable, however, We have not verified its accuracy and make no guarantee, warranty or representation, expressed or implied, about such information. The information contained above is submitted subject to the possibility of errors, omissions, price changes, rental or other conditions, prior sale, lease or financing, or withdrawal without notice. Any projections, opinions, assumptions or estimates of the information contained above or provided in connection therewith, either expressed or implied, are for example only, and they may not represent current or future performance of the subject property. You, together with your tax and legal advisors, should conduct your own thorough investigation of the subject property and potential investment.

# DEMOGRAPHICS MAP | 907 Kramer Ln

Austin, TX 78758



Population	1 Mile	3 Miles	5 Miles
Total Population	18,771	140,606	320,894
Average Age	34.1	33.2	34.4
Average Age (Male)	33.4	32.9	34.2
Average Age (Female)	35.9	33.9	35.2
Households & Income	1 Mile	3 Miles	5 Miles
Total Households	7,486	61,533	144,304
# of Persons per HH	2.5	2.3	2.2
Average HH Income	\$71,117	\$71,367	\$80,720
Average House Value	\$227,100	\$199,560	\$262,020

\* Demographic data derived from 2020 ACS - US Census

**Daniel Eng | CCIM**

469.916.8888 x801  
daniel@engvest.com

**Debbie Tran**

512.698.0133  
debbie\_tran@live.com

**Calvin Wong | CCIM**

972.904.2888  
calvin@engvest.com



# MEET THE TEAM | 907 Kramer Ln

Austin, TX 78758



**Daniel Eng | CCIM**

Broker Associate

D: 469.916.8888 x801 | C: 214.926.3666

daniel@engvest.com



**EXP COMMERCIAL**  
9600 Great Hills Trl Ste 150W  
Austin, TX 78759  
469.916.8888 x801

TX #514529



**Debbie Tran**

D: 512.698.0133

debbie\_tran@live.com



**EXP REALTY**  
9600 Great Hills TRL Ste 150 W  
Austin, TX 78759  
512.698.0133

**Daniel Eng | CCIM**

469.916.8888 x801  
daniel@engvest.com

**Debbie Tran**

512.698.0133  
debbie\_tran@live.com

**Calvin Wong | CCIM**

972.904.2888  
calvin@engvest.com



eXp Commercial, LLC, its direct and indirect parents and their subsidiaries (together, "We") obtained the information above from sources believed to be reliable, however, We have not verified its accuracy and make no guarantee, warranty or representation, expressed or implied, about such information. The information contained above is submitted subject to the possibility of errors, omissions, price changes, rental or other conditions, prior sale, lease or financing, or withdrawal without notice. Any projections, opinions, assumptions or estimates of the information contained above or provided in connection therewith, either expressed or implied, are for example only, and they may not represent current or future performance of the subject property. You, together with your tax and legal advisors, should conduct your own thorough investigation of the subject property and potential investment.

MEET THE TEAM |

# 907 Kramer Ln

Austin, TX 78758



**Calvin Wong | CCIM**

Broker Associate

D: 972.904.2888 | C: 972.904.2888

calvin@engvest.com



**EXP COMMERCIAL**  
9600 Great Hills Trl Ste 150W  
Austin, TX 78759  
972.904.2888

TX #0570017

**Daniel Eng | CCIM**

469.916.8888 x801  
daniel@engvest.com

**Debbie Tran**

512.698.0133  
debbie\_tran@live.com

**Calvin Wong | CCIM**

972.904.2888  
calvin@engvest.com



eXp Commercial, LLC, its direct and indirect parents and their subsidiaries (together, "We") obtained the information above from sources believed to be reliable, however, We have not verified its accuracy and make no guarantee, warranty or representation, expressed or implied, about such information. The information contained above is submitted subject to the possibility of errors, omissions, price changes, rental or other conditions, prior sale, lease or financing, or withdrawal without notice. Any projections, opinions, assumptions or estimates of the information contained above or provided in connection therewith, either expressed or implied, are for example only, and they may not represent current or future performance of the subject property. You, together with your tax and legal advisors, should conduct your own thorough investigation of the subject property and potential investment.