



10190

LEASING
713-461-4161

FOR LEASE

Executive Offices For Lease

10190 Katy Fwy, Houston, TX 77043

eXp Commercial | 9600 Great Hills Trl | Austin, TX 78759 |

Daniel Eng | CCIM

469.916.8888 x801
daniel@engvest.com

Dan King

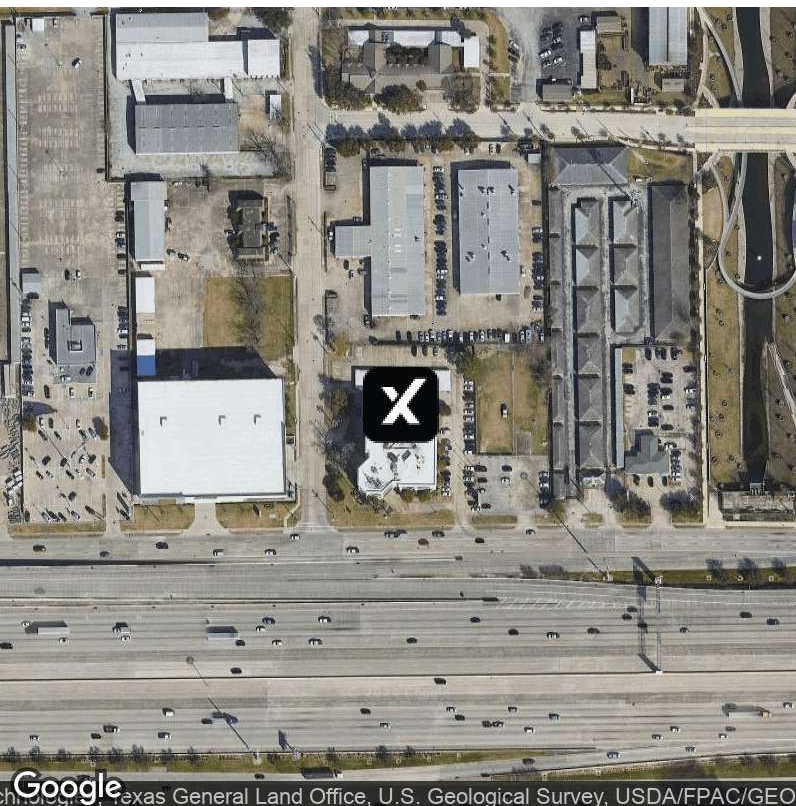
713.876.2550
king@dankingrealestate.com

Eriko Ishii

713.702.9011
eriko@erikoishii.com

FOR LEASE | Executive Offices

10190 Katy Fwy, Houston, TX 77043



Property Description

Recently renovated and move-in-ready suites are available with competitive gross lease rates and flexible short or long-term lease options.

The building features a brick pass-through driveway with a fountain, allowing drivers to pull right up to the entrance. The lobby has a 5-story atrium with glass elevators that are sure to impress clients and employees. There are lounges and vending areas for tenants to enjoy. The recently renovated suites are ready for new businesses to move in, and competitive gross rates with flexible terms are available.

Offering Summary

Lease Rate:	Negotiable
Available SF:	9,205 SF
Building Size:	9,205 SF

Demographics	1 Mile	3 Miles	5 Miles
Total Households	7,948	53,488	172,668
Total Population	17,185	128,343	370,087
Average HH Income	\$102,315	\$121,372	\$95,610

Daniel Eng | CCIM

469.916.8888 x801
daniel@engvest.com

Dan King

713.876.2550
king@dankingrealestate.com

Eriko Ishii

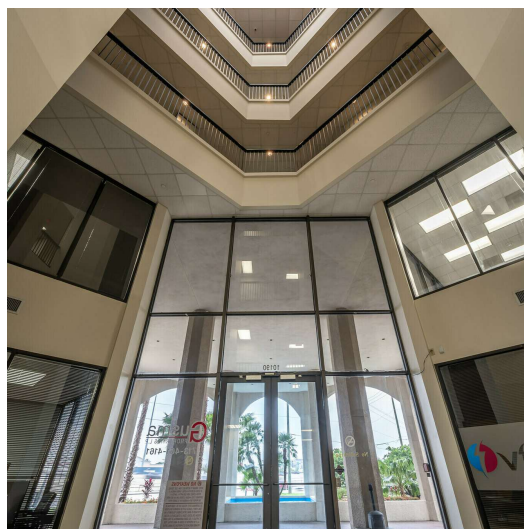
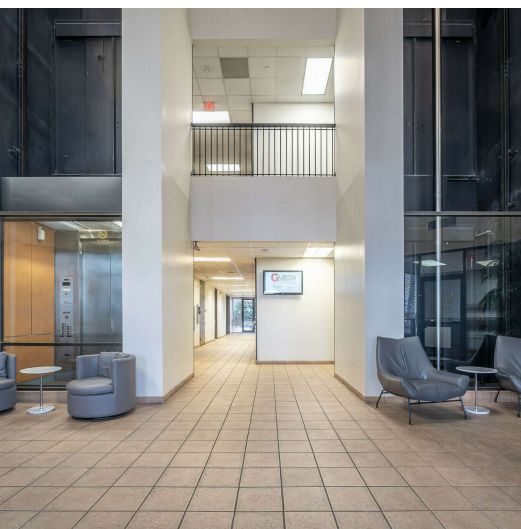
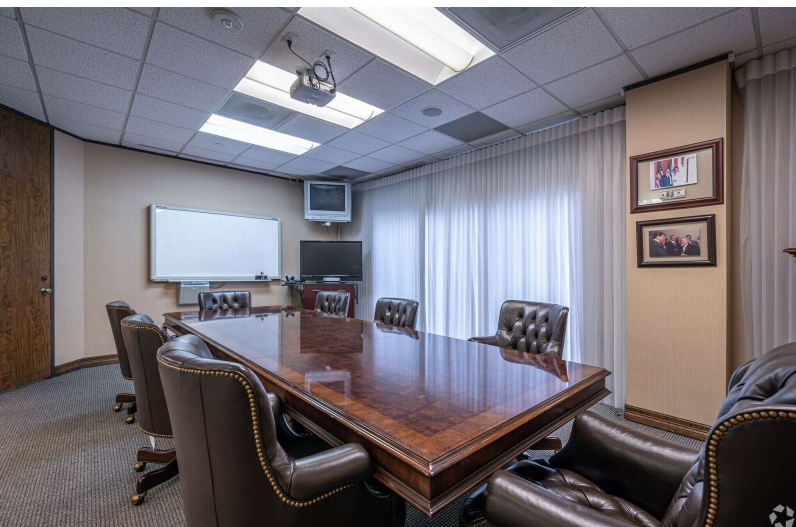
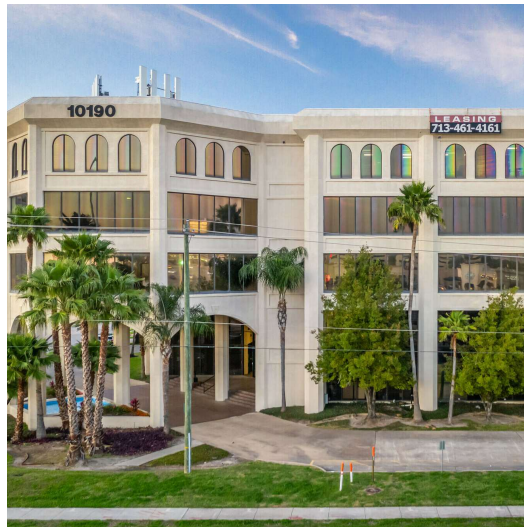
713.702.9011
eriko@erikoishii.com



eXp Commercial, LLC, its direct and indirect parents and their subsidiaries (together, "We") obtained the information above from sources believed to be reliable, however, We have not verified its accuracy and make no guarantee, warranty or representation, expressed or implied, about such information. The information contained above is submitted subject to the possibility of errors, omissions, price changes, rental or other conditions, prior sale, lease or financing, or withdrawal without notice. Any projections, opinions, assumptions or estimates of the information contained above or provided in connection therewith, either expressed or implied, are for example only, and they may not represent current or future performance of the subject property. You, together with your tax and legal advisors, should conduct your own thorough investigation of the subject property and potential investment.

FOR LEASE | Executive Offices

10190 Katy Fwy, Houston, TX 77043



Daniel Eng | CCIM
469.916.8888 x801
daniel@engvest.com

Dan King
713.876.2550
king@dankingrealestate.com

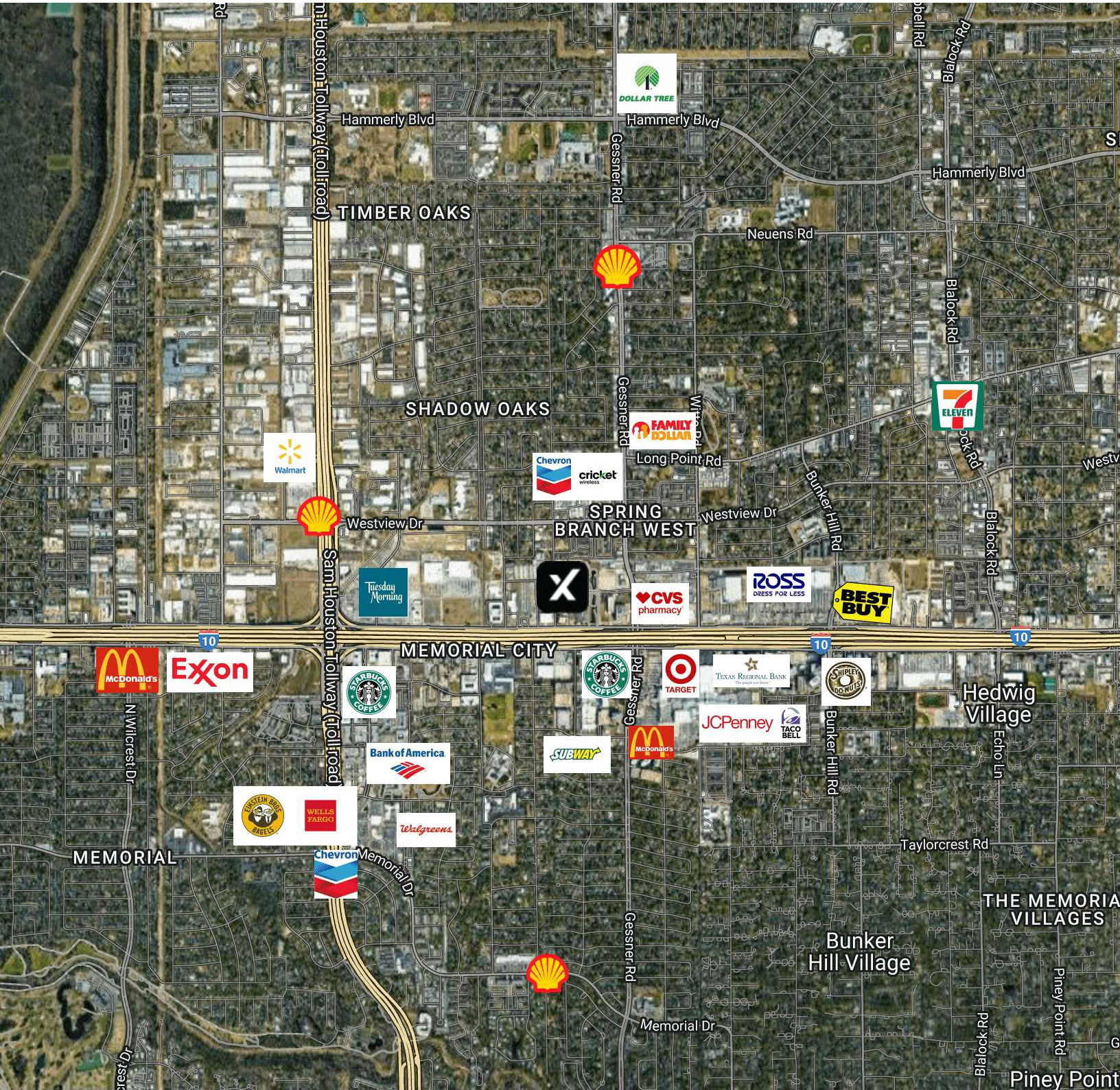
Eriko Ishii
713.702.9011
eriko@erikoishii.com

expTM
COMMERCIAL

eXp Commercial, LLC, its direct and indirect parents and their subsidiaries (together, "We") obtained the information above from sources believed to be reliable, however, We have not verified its accuracy and make no guarantee, warranty or representation, expressed or implied, about such information. The information contained above is submitted subject to the possibility of errors, omissions, price changes, rental or other conditions, prior sale, lease or financing, or withdrawal without notice. Any projections, opinions, assumptions or estimates of the information contained above or provided in connection therewith, either expressed or implied, are for example only, and they may not represent current or future performance of the subject property. You, together with your tax and legal advisors, should conduct your own thorough investigation of the subject property and potential investment.

RETAILER MAP | Executive Offices For Lease

10190 Katy Fwy, Houston, TX 77043



Map data ©2023 Google Imagery ©2023, CNES / Airbus, Houston-Galveston Area Council, Landsat / Copernicus, Maxar Technologies, Texas General Land Office, U.S. Geological Survey, USDA/FPAC/GEO

Daniel Eng | CCIM
469.916.8888 x801
daniel@engvest.com

Dan King
713.876.2550
king@dankingrealestate.com

Eriko Ishii
713.702.9011
eriko@erikoishii.com



eXp Commercial, LLC, its direct and indirect parents and their subsidiaries (together, "We") obtained the information above from sources believed to be reliable, however, We have not verified its accuracy and make no guarantee, warranty or representation, expressed or implied, about such information. The information contained above is submitted subject to the possibility of errors, omissions, price changes, rental or other conditions, prior sale, lease or financing, or withdrawal without notice. Any projections, opinions, assumptions or estimates of the information contained above or provided in connection therewith, either expressed or implied, are for example only, and they may not represent current or future performance of the subject property. You, together with your tax and legal advisors, should conduct your own thorough investigation of the subject property and potential investment.

AERIAL MAP | Executive Offices For Lease

10190 Katy Fwy, Houston, TX 77043



Daniel Eng | CCIM

469.916.8888 x801
daniel@engvest.com

Dan King

713.876.2550
king@dankingrealestate.com

Eriko Ishii

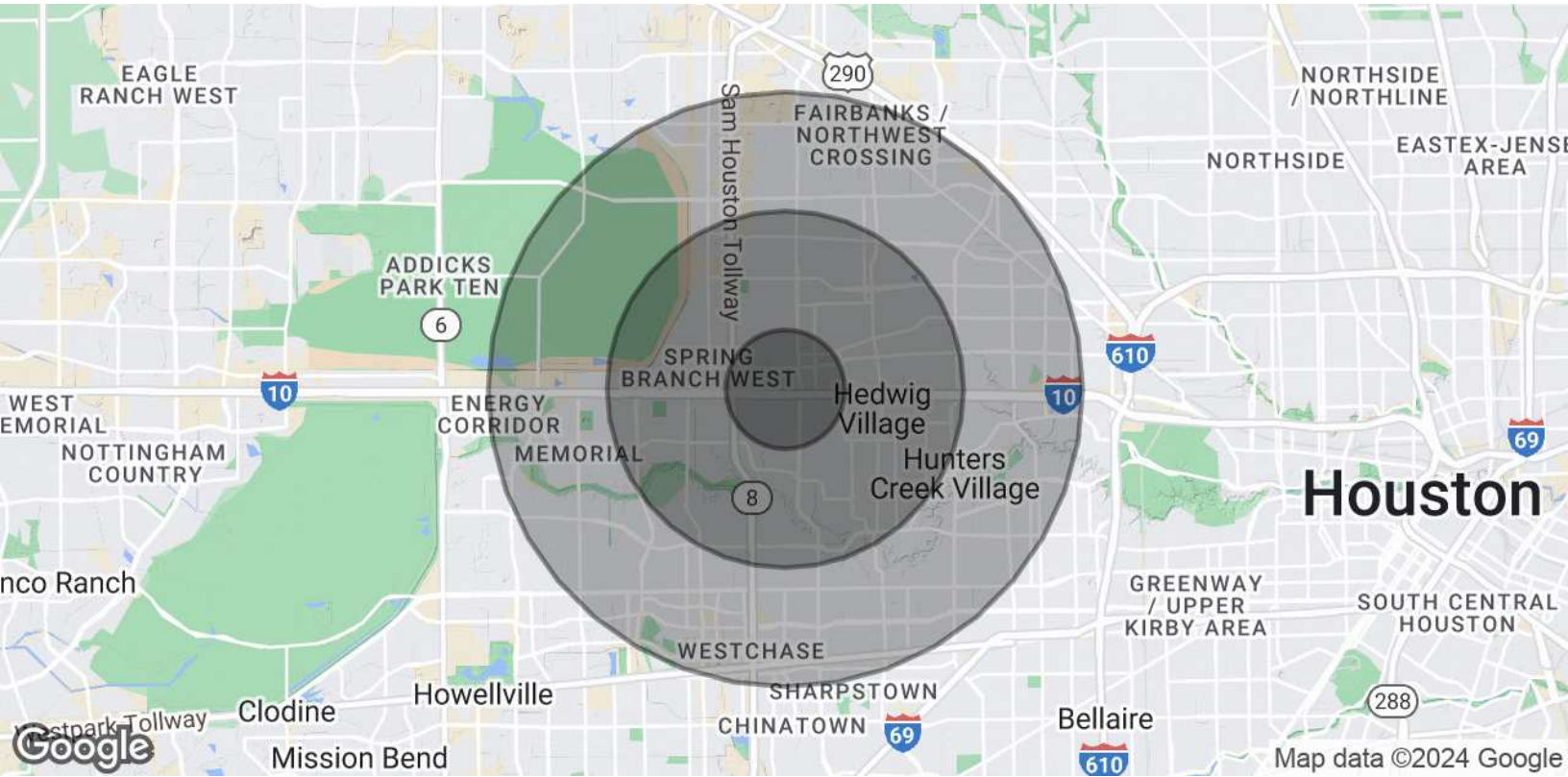
713.702.9011
eriko@erikoishii.com

expTM
COMMERCIAL

eXp Commercial, LLC, its direct and indirect parents and their subsidiaries (together, "We") obtained the information above from sources believed to be reliable, however, We have not verified its accuracy and make no guarantee, warranty or representation, expressed or implied, about such information. The information contained above is submitted subject to the possibility of errors, omissions, price changes, rental or other conditions, prior sale, lease or financing, or withdrawal without notice. Any projections, opinions, assumptions or estimates of the information contained above or provided in connection therewith, either expressed or implied, are for example only, and they may not represent current or future performance of the subject property. You, together with your tax and legal advisors, should conduct your own thorough investigation of the subject property and potential investment.

DEMOGRAPHICS MAP | Executive Offices For Lease

10190 Katy Fwy, Houston, TX 77043



Population	1 Mile	3 Miles	5 Miles
Total Population	17,185	128,343	370,087
Average Age	33.7	36.9	36.8
Average Age (Male)	33.6	34.8	35.7
Average Age (Female)	34.5	37.6	37.2
Households & Income	1 Mile	3 Miles	5 Miles
Total Households	7,948	53,488	172,668
# of Persons per HH	2.2	2.4	2.1
Average HH Income	\$102,315	\$121,372	\$95,610
Average House Value	\$481,233	\$482,403	\$328,691

* Demographic data derived from 2020 ACS - US Census

Daniel Eng | CCIM

469.916.8888 x801
daniel@engvest.com

Dan King

713.876.2550
king@dankingrealestate.com

Eriko Ishii

713.702.9011
eriko@erikoishii.com



eXp Commercial, LLC, its direct and indirect parents and their subsidiaries (together, "We") obtained the information above from sources believed to be reliable, however, We have not verified its accuracy and make no guarantee, warranty or representation, expressed or implied, about such information. The information contained above is submitted subject to the possibility of errors, omissions, price changes, rental or other conditions, prior sale, lease or financing, or withdrawal without notice. Any projections, opinions, assumptions or estimates of the information contained above or provided in connection therewith, either expressed or implied, are for example only, and they may not represent current or future performance of the subject property. You, together with your tax and legal advisors, should conduct your own thorough investigation of the subject property and potential investment.

MEET THE TEAM | Executive Offices For Lease

10190 Katy Fwy, Houston, TX 77043



Daniel Eng | CCIM

Broker Associate

D: 469.916.8888 x801 C: 214.926.3666
daniel@engvest.com

EXP COMMERCIAL

9600 Great Hills Trl Ste 150W
Austin, TX 78759
469.916.8888 x801

TX #514529



Dan King

Realtor

D: 713.876.2550
king@dankingrealestate.com

EXP REALTY LLC

One Riverway Ste. 1700
Houston, TX 77056
713.876.2550

TX #663038



Eriko Ishii

Broker Associate

D: 713.702.9011
eriko@erikoishii.com

EXP REALTY

One Riverway, Ste. 1700
Houston, TX 77056
713.702.9011

TX #0602867

Daniel Eng | CCIM

469.916.8888 x801
daniel@engvest.com

Dan King

713.876.2550
king@dankingrealestate.com

Eriko Ishii

713.702.9011
eriko@erikoishii.com



eXp Commercial, LLC, its direct and indirect parents and their subsidiaries (together, "We") obtained the information above from sources believed to be reliable, however, We have not verified its accuracy and make no guarantee, warranty or representation, expressed or implied, about such information. The information contained above is submitted subject to the possibility of errors, omissions, price changes, rental or other conditions, prior sale, lease or financing, or withdrawal without notice. Any projections, opinions, assumptions or estimates of the information contained above or provided in connection therewith, either expressed or implied, are for example only, and they may not represent current or future performance of the subject property. You, together with your tax and legal advisors, should conduct your own thorough investigation of the subject property and potential investment.