



**736 Butterworth Street Southwest  
Grand Rapids, Michigan 49504**

**Property Highlights**

- Close Proximity to Downtown
- 10' Hood
- Walk-in Cooler
- Lower Level Storage
- Future Expansion for Seating Area



For More Information

**Paul Oosterbaan**

O: 616 575 7054 | C: 269 760 2101  
paulo@naiwwm.com

**Todd Leinberger, MBA**

O: 616 242 1114 | C: 231 679 4457  
toddl@naiwwm.com

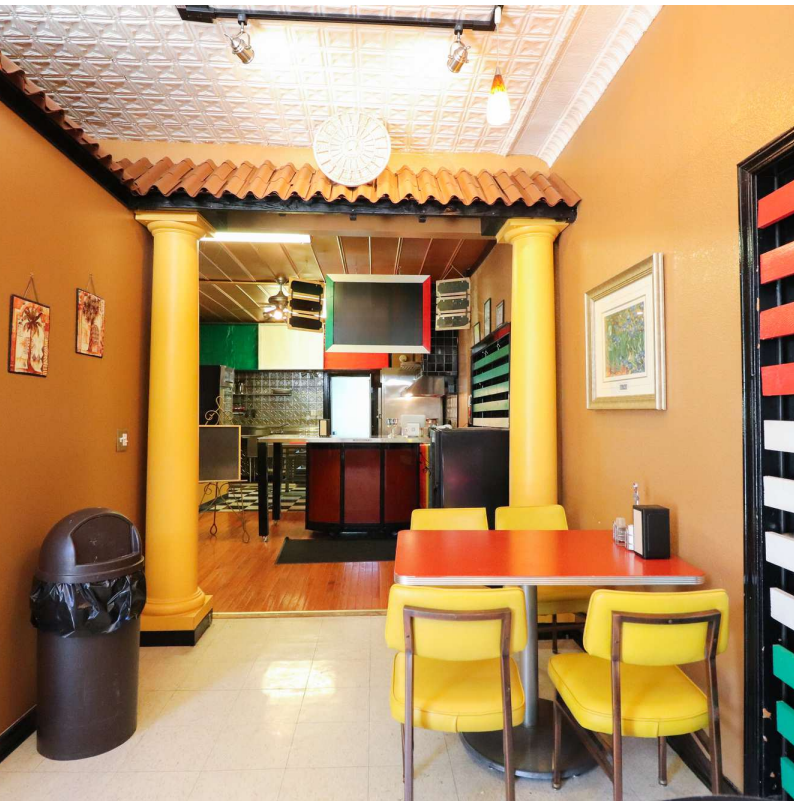
# Property Overview

736 Butterworth Street SW  
Grand Rapids, Michigan 49504



## Property Information

<b>Location:</b>	Between National and State Street
<b>Municipality:</b>	City of Grand Rapids
<b>PPN:</b>	41-13-25-351-006
<b>Total Building Size:</b>	1,621 SF
<b>Year Built:</b>	1920
<b>Acreage:</b>	0.037 Acres
<b>Parking:</b>	Surface
<b>Zoning:</b>	TBA



# Lease Overview

736 Butterworth Street SW  
Grand Rapids, Michigan 49504

## Lease Information

**Lease Type:** NNN

**Terms:** 36 - 60 Months

**Tenant Provides:** Air Conditioning, Electric, Gas/Heat, Janitorial, Phone, Refuse Removal, Sewer, Snow Removal, Water

**Landlord Provides:** Taxes, Insurance

## Availability

SUITE	RENTABLE SF	RATE / SF / YR	MONTHLY RENT
Entire Building	1,621 SF	\$20.35	\$2,748.95



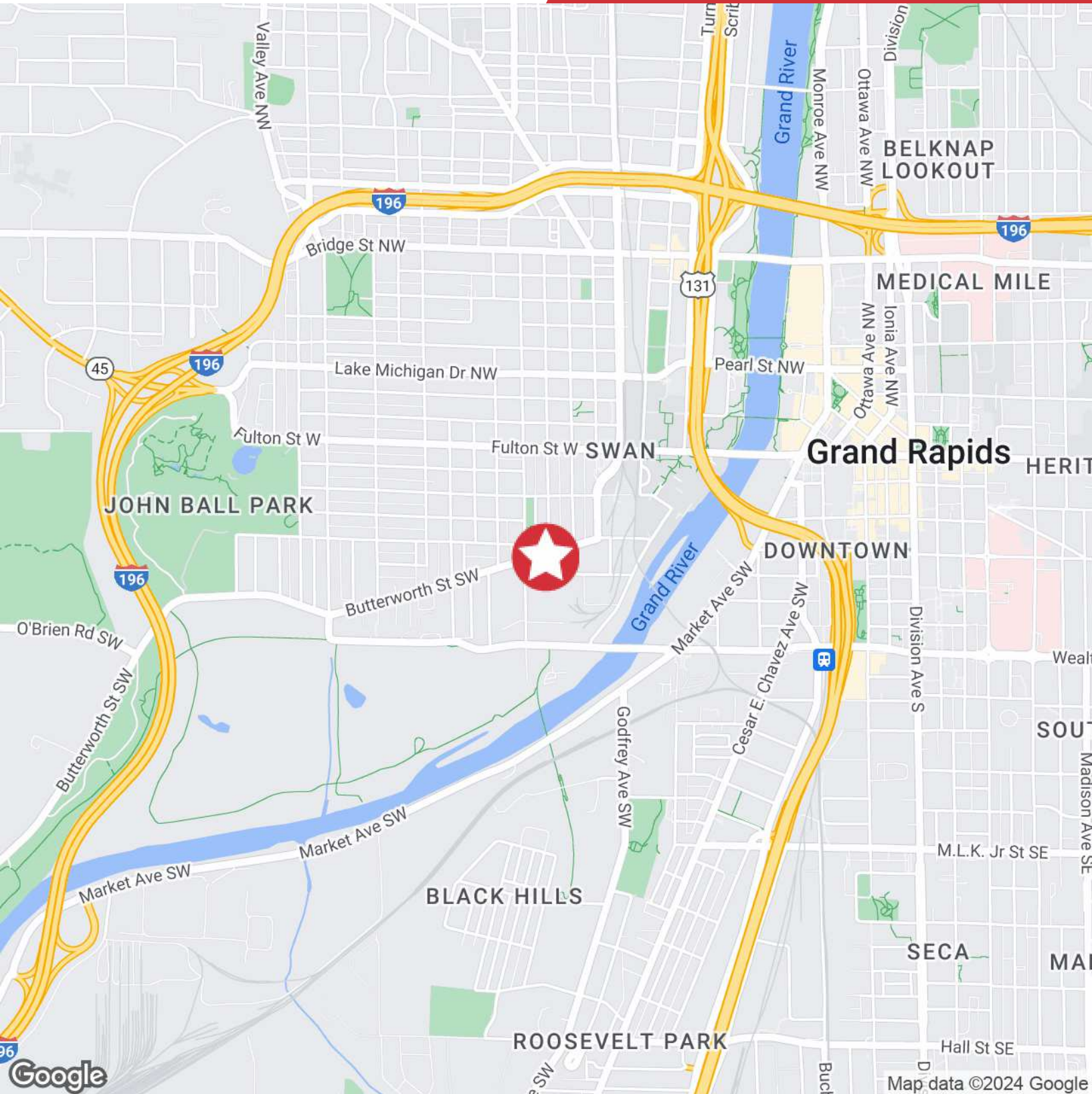
# Additional Photography

736 Butterworth Street SW  
Grand Rapids, Michigan 49504



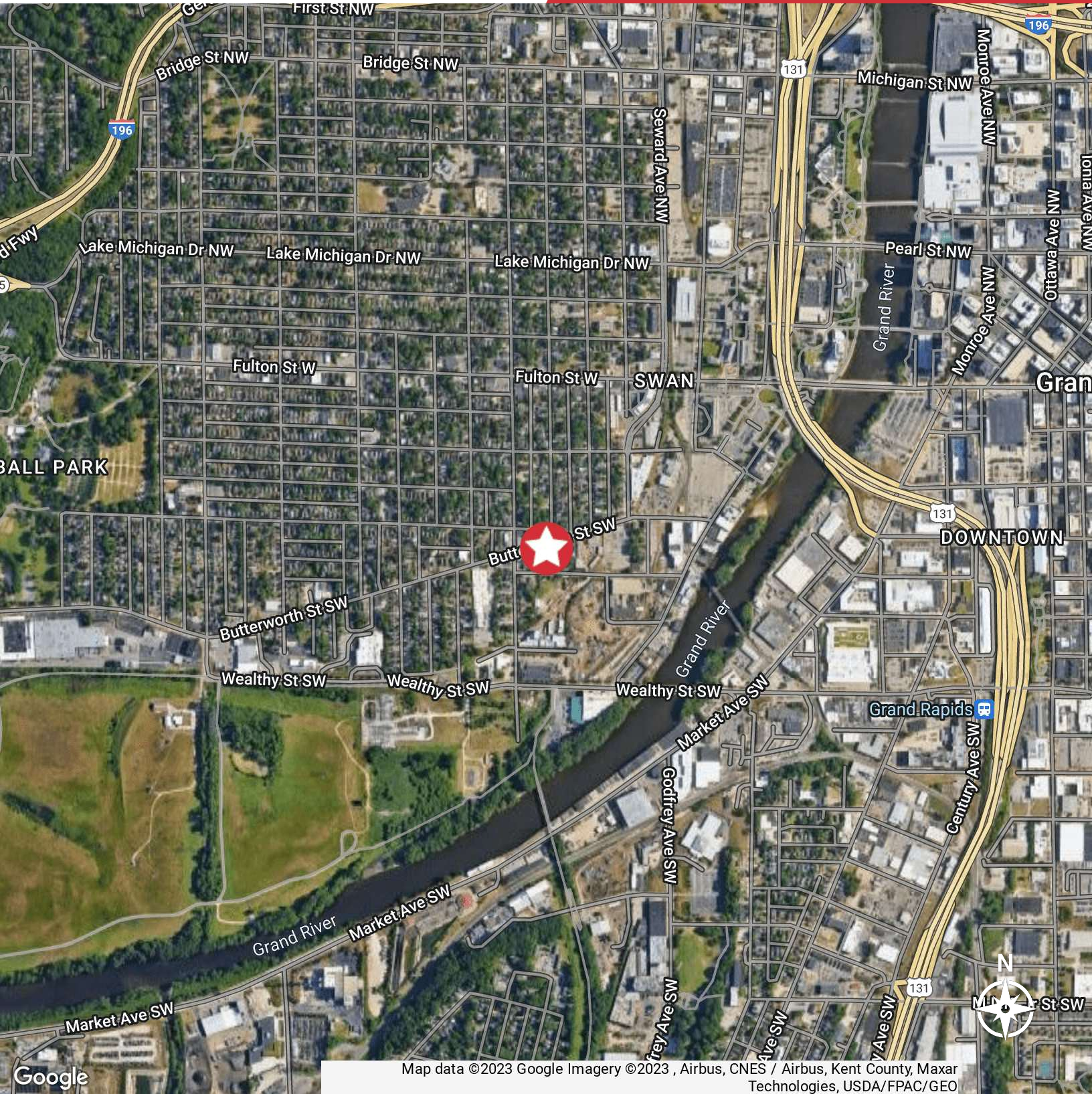
# Location Map

736 Butterworth Street SW  
Grand Rapids, Michigan 49504



# Aerial Map

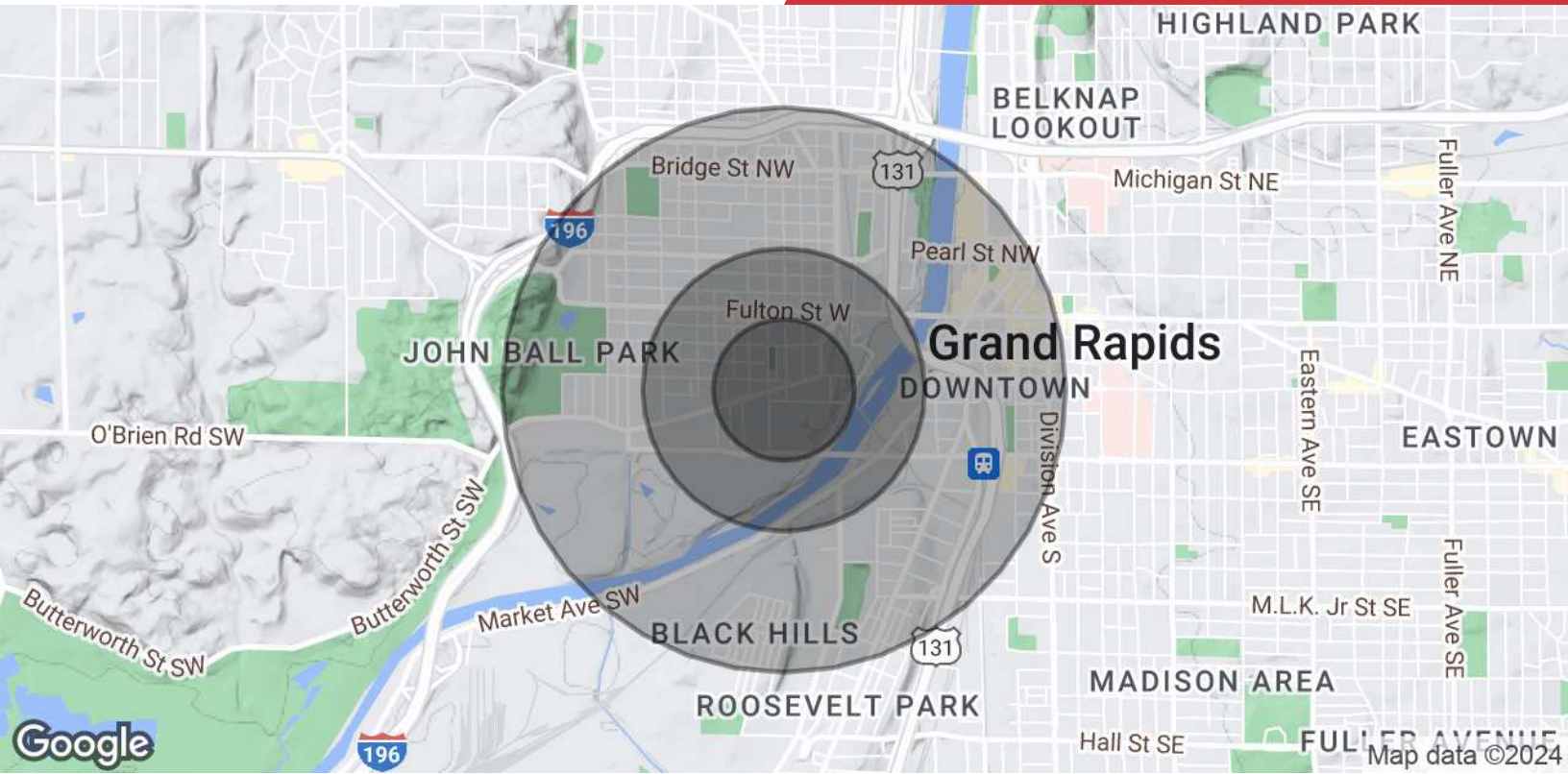
736 Butterworth Street SW  
Grand Rapids, Michigan 49504



Map data ©2023 Google Imagery ©2023, Airbus, CNES / Airbus, Kent County, Maxar Technologies, USDA/FPAC/GEO

# Demographics Map & Report

736 Butterworth Street SW  
Grand Rapids, Michigan 49504



POPULATION	0.25 MILES	0.5 MILES	1 MILE
<b>Total Population</b>	1,161	3,652	13,022
<b>Average Age</b>	25.1	25.5	27.5
<b>Average Age (Male)</b>	27.1	26.4	28.3
<b>Average Age (Female)</b>	23.3	25.4	27.1
HOUSEHOLDS & INCOME	0.25 MILES	0.5 MILES	1 MILE
<b>Total Households</b>	472	1,421	5,707
<b># of Persons per HH</b>	2.5	2.6	2.3
<b>Average HH Income</b>	\$42,135	\$51,158	\$56,922
<b>Average House Value</b>	\$41,374	\$95,961	\$126,604

2020 American Community Survey (ACS)