



## 3220 68th Street Southeast Kentwood, Michigan 49548

### Property Highlights

- Assessible Corner With Excellent Visibility on 68th St and Hannah Lake
- High Traffic Corner
- Nicely Maintained Building, With a Bathroom and Kitchenette
- Great for Office Space, or Retail With Showroom



For More Information

**Paul Oosterbaan**

O: 616 575 7054 | C: 269 760 2101  
paulo@naiwwm.com

**Noah Rachor**

O: 616 242 1126 | C: 810 569 6711  
noahr@naiwwm.com

# Property Overview

3220 68th Street Southeast  
Kentwood, Michigan 49548

## Property Overview

1,768 SF building that offers excellent exposure and signage. Large windows give great natural lighting. Open concept that can accommodate office or retail uses.

## Property Information

<b>Location:</b>	SE Corner of 68th Street and Hanna Lake
<b>Total Building Size:</b>	1,768 SF
<b>Municipality:</b>	Gaines Twp
<b>PPN:</b>	41-22-11-0101-015
<b>Acreage:</b>	0.17 Acres
<b>Signage:</b>	Building
<b>Parking:</b>	Surface; On Site w/Amenities
<b>Zoning:</b>	COMMERCIAL
<b>Building Class:</b>	B



# Lease Overview

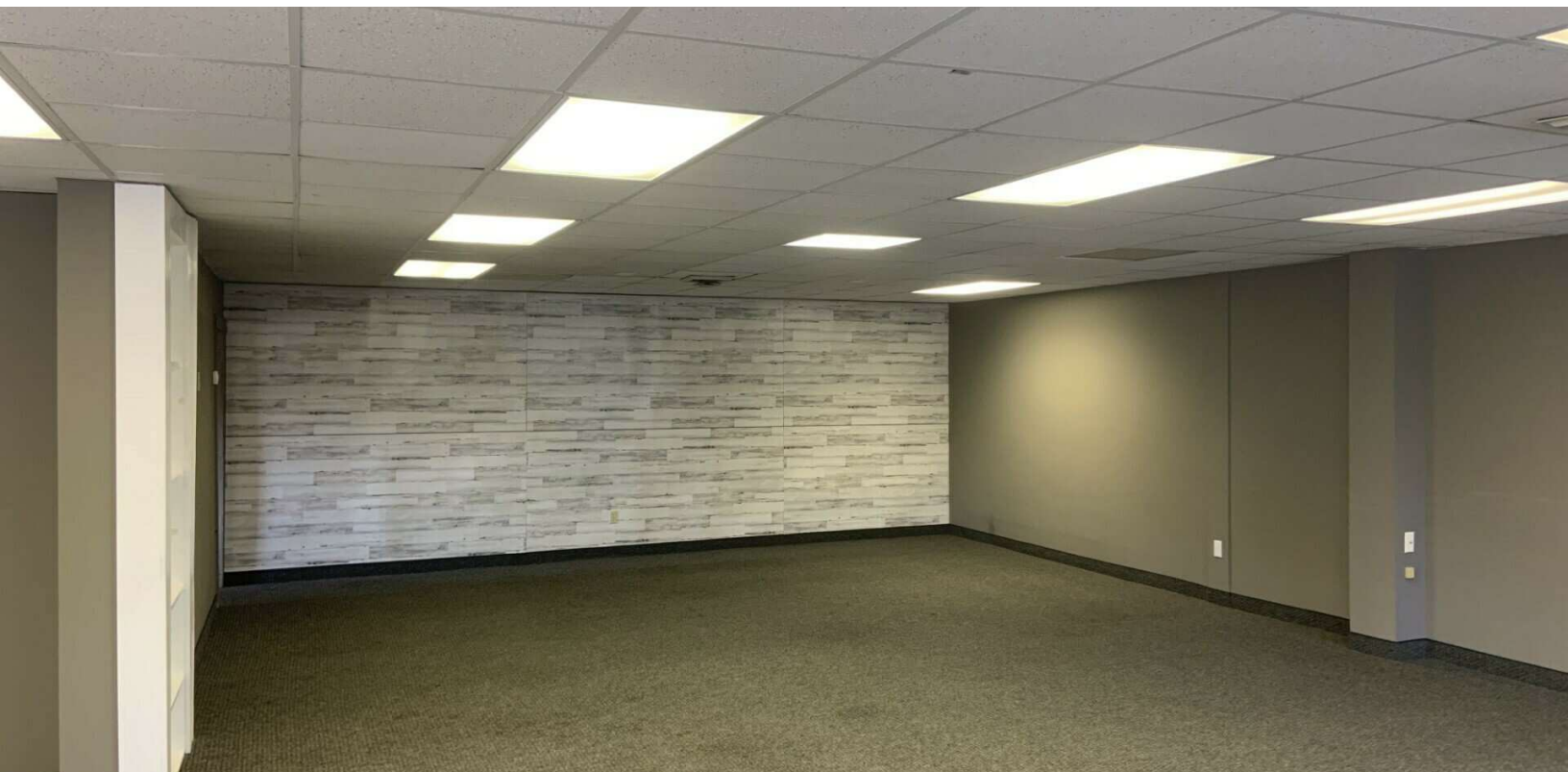
3220 68th Street Southeast  
Kentwood, Michigan 49548

## Lease Information

<b>Lease Type:</b>	Modified Gross
<b>Terms:</b>	36 Months
<b>Tenant Provides:</b>	Air Conditioning, Electric, Gas/Heat, Janitorial, Phone
<b>Landlord Provides:</b>	Refuse Removal, Sewer, Snow Removal, Taxes, Water, Insurance
<b>Renewal Option:</b>	Yes
<b>Municipality:</b>	Gaines
<b>PPN:</b>	41-22-11-101-015

## Availability

SUITE	RENTABLE SF	RATE / SF / YR	MONTHLY RENT
B	1,768 SF	\$10.75	\$1,583.83



# Additional Photos

3220 68th Street Southeast  
Kentwood, Michigan 49548



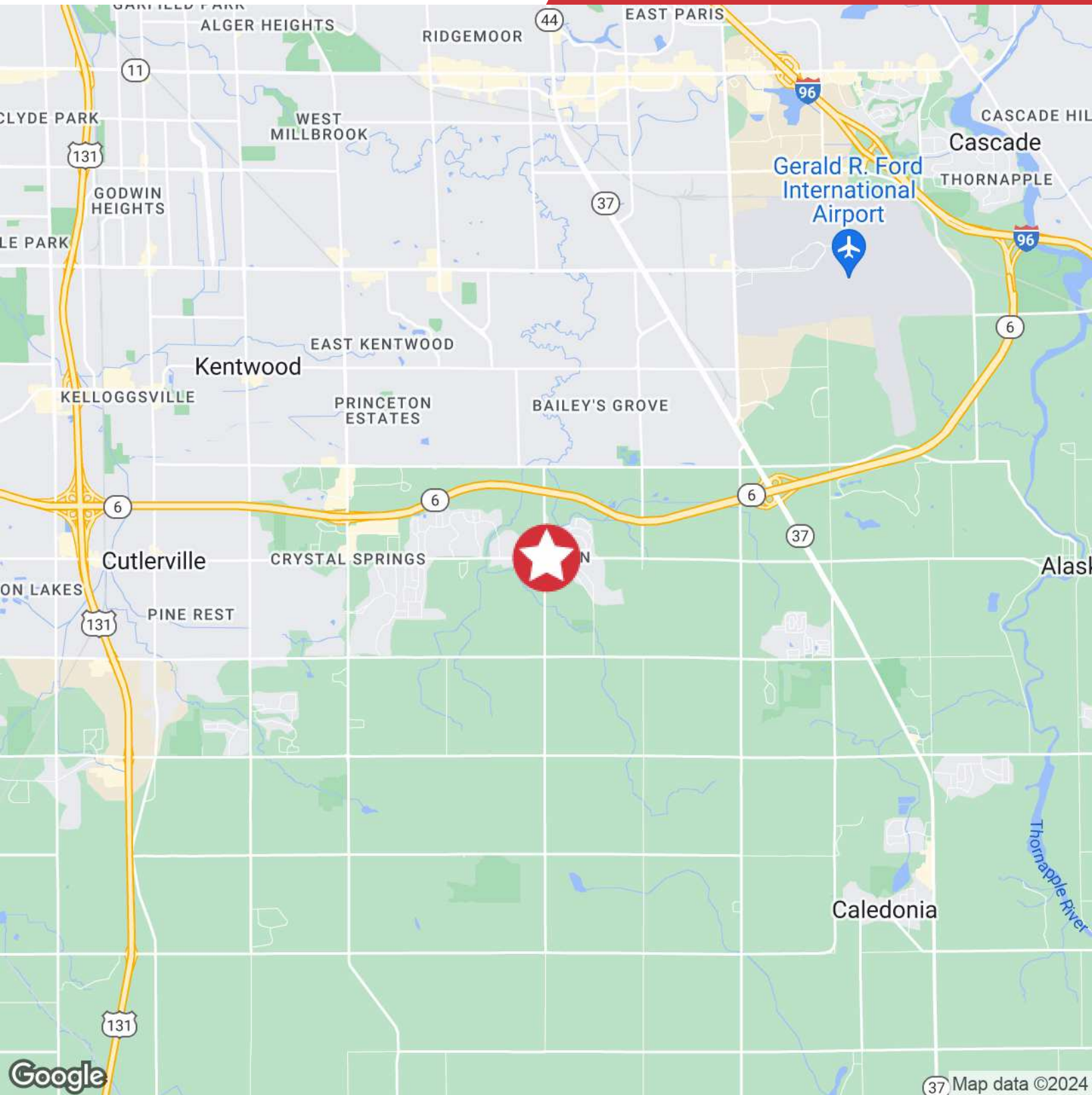
# Parcel

3220 68th Street Southeast  
Kentwood, Michigan 49548



# Location Map

3220 68th Street Southeast  
Kentwood, Michigan 49548



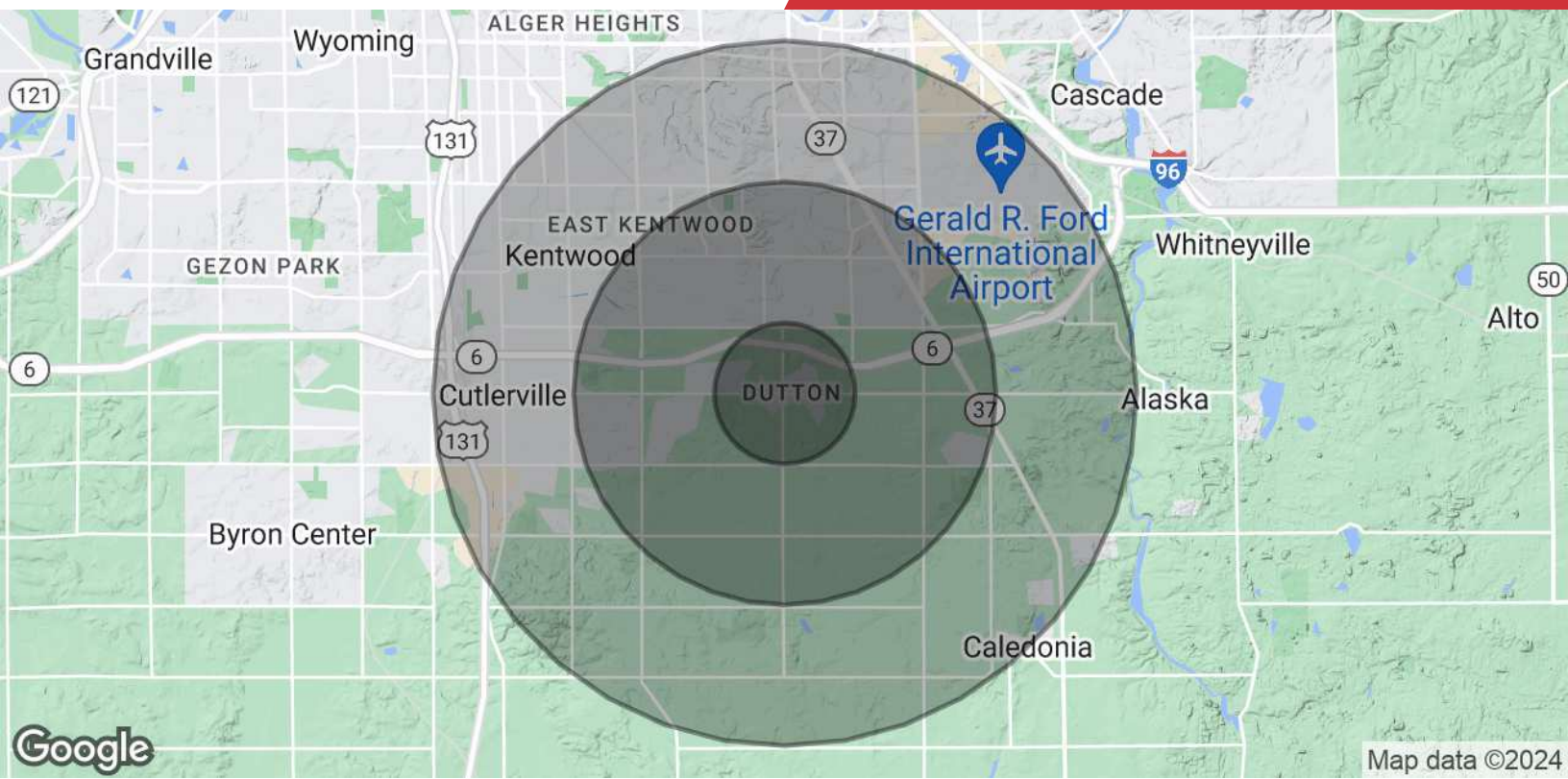
# Retailer Map

3220 68th Street Southeast  
Kentwood, Michigan 49548



# Demographics Map & Report

3220 68th Street Southeast  
Kentwood, Michigan 49548



POPULATION	1 MILE	3 MILES	5 MILES
<b>Total Population</b>	2,802	35,121	102,102
<b>Average Age</b>	40.0	34.2	35.8
<b>Average Age (Male)</b>	36.1	31.1	33.1
<b>Average Age (Female)</b>	43.5	36.9	37.8
HOUSEHOLDS & INCOME	1 MILE	3 MILES	5 MILES
<b>Total Households</b>	1,134	12,533	38,574
<b># of Persons per HH</b>	2.5	2.8	2.6
<b>Average HH Income</b>	\$84,858	\$87,094	\$73,987
<b>Average House Value</b>	\$183,196	\$184,444	\$163,398

2020 American Community Survey (ACS)