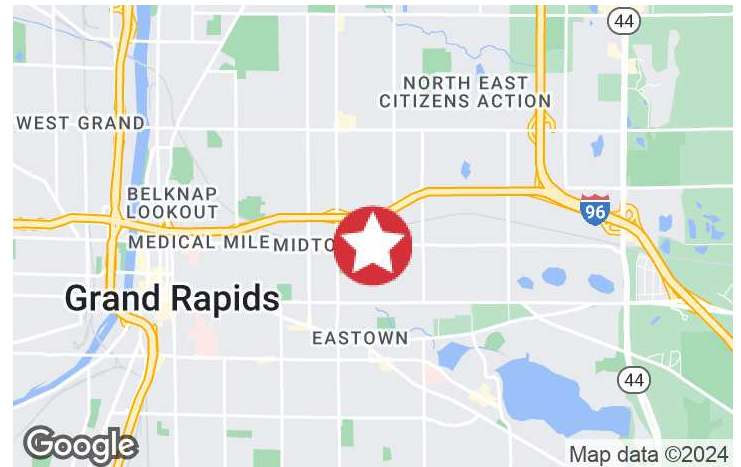




1430 Michigan St NE
Grand Rapids, Michigan 49503

Property Highlights

- Office space close to Downtown and I-196 interchange
- Entire building for sale or two (2) office suites available for lease - could be combined
- Signage on Michigan St
- Medical or general office



For More Information

Mary Anne Wisinski-Rosely, SIOR, CCIM

O: 616 575 7047 | C: 616 450 7307
mawr@naiwwm.com

Jason Makowski, SIOR

O: 616 575 7034 | C: 616 262 8532
jasonm@naiwwm.com

Property Overview

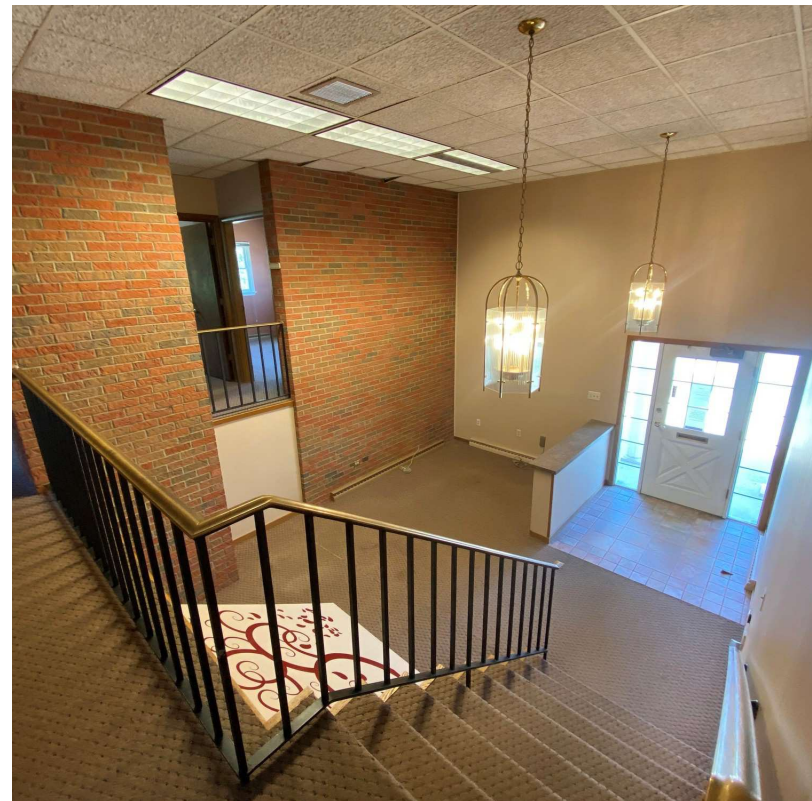
1430 Michigan St NE
Grand Rapids, Michigan 49503

Property Overview

Nice small medical or general office building located on the Medical Mile just east of Fuller Avenue. Upper level suite has 8 offices, conference room and reception area. Lower level suite is set up for medical with its own private entrance, waiting room, several exam/offices, break room. Monument and building signage on Michigan St. Floors not currently connected but were at one time. Possible to reconnect by an internal stairway.

Property Information

| | |
|-----------------------------|------------------------------------|
| Location: | Between Plymouth Ave and Fuller St |
| Total Building Size: | 3,610 SF |
| Signage: | Monument and Building |
| Parking: | Surface; Ample Spaces |
| Zoning: | Commercial |
| Municipality: | City of Grand Rapids |
| PPN: | 41-14-29-226-003 |



Sale Overview

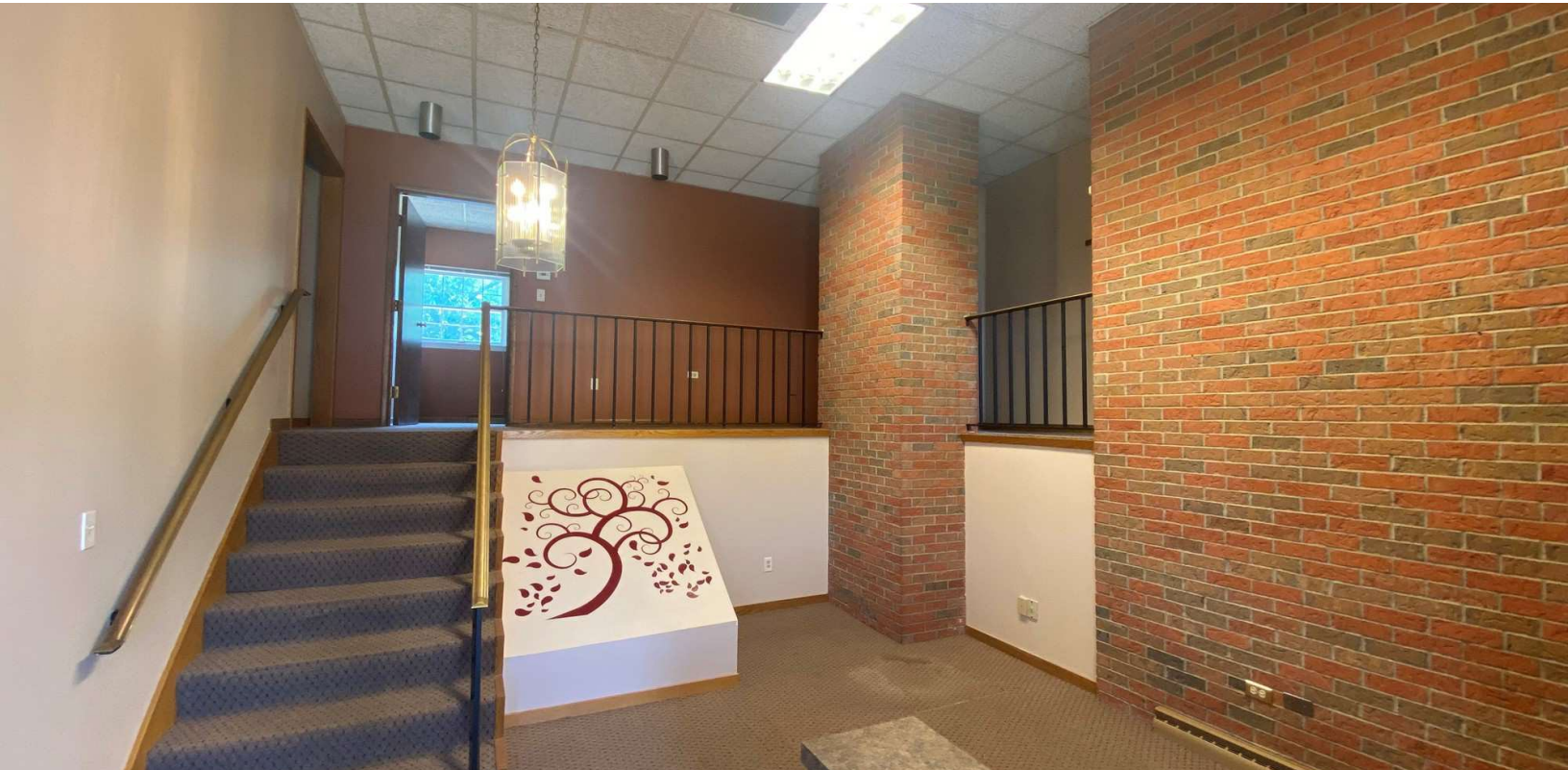
1430 Michigan St NE
Grand Rapids, Michigan 49503

Sale Information

| | |
|------------------------------|--------------|
| Price: | \$599,000.00 |
| Per SF: | \$165.93 |
| SEV (2024): | \$0.00 |
| Taxable Value (2024): | \$181,274.00 |
| Summer Taxes (2023): | \$8,644.07 |
| Winter Taxes (2023): | \$342.80 |
| Total Taxes (2023): | \$8,986.87 |

Legal Description

LOTS 29 & 30 & W 1/2 OF LOT 28 ALSO W 3 FT OF N 11 FT OF E 1/2 OF SD LOT 28 EX N 7 FT OF ENTIRE PARCEL FOR STREET* ALDEN PARK



Lease Overview

1430 Michigan St NE
Grand Rapids, Michigan 49503

Lease Information

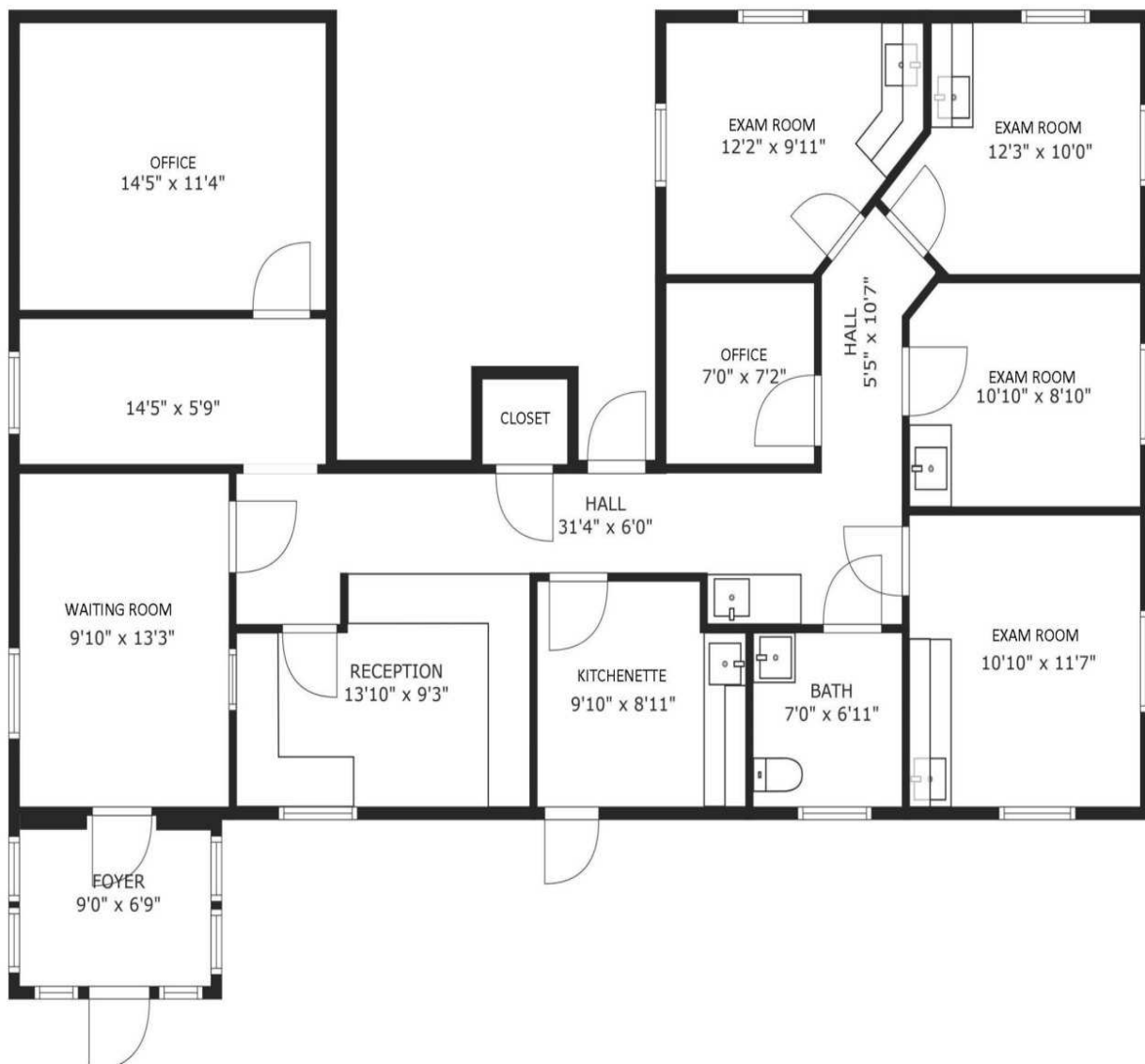
| | |
|---------------------------|---|
| Lease Type: | Modified Gross |
| Terms: | 36 -60 Months |
| Tenant Provides: | Air Conditioning, Electric, Gas/Heat, Janitorial, Phone, Sewer, Water |
| Landlord Provides: | Insurance, Refuse Removal, Snow Removal, Taxes |
| Possession: | At Lease Execution |

Availability

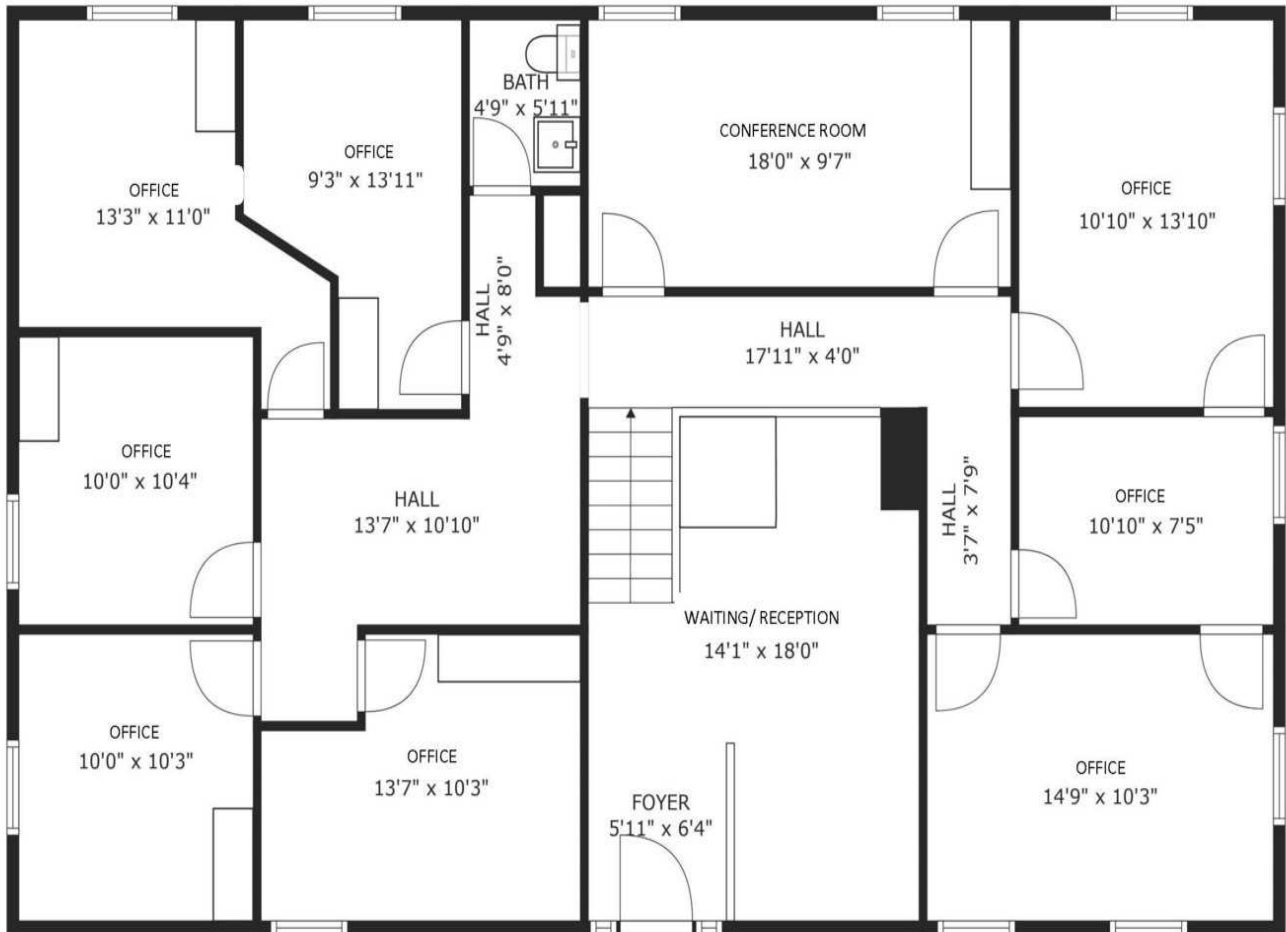
| SUITE | RENTABLE SF | RATE / SF / YR | MONTHLY RENT |
|------------------------|-------------|----------------|--------------|
| A (Lower Level) | 1,660 SF | \$13.50 | \$1,867.50 |
| B (Upper Level) | 1,950 SF | \$13.50 | \$2,193.75 |
| A & B | 3,610 SF | \$13.50 | \$4,061.25 |



LOWER LEVEL

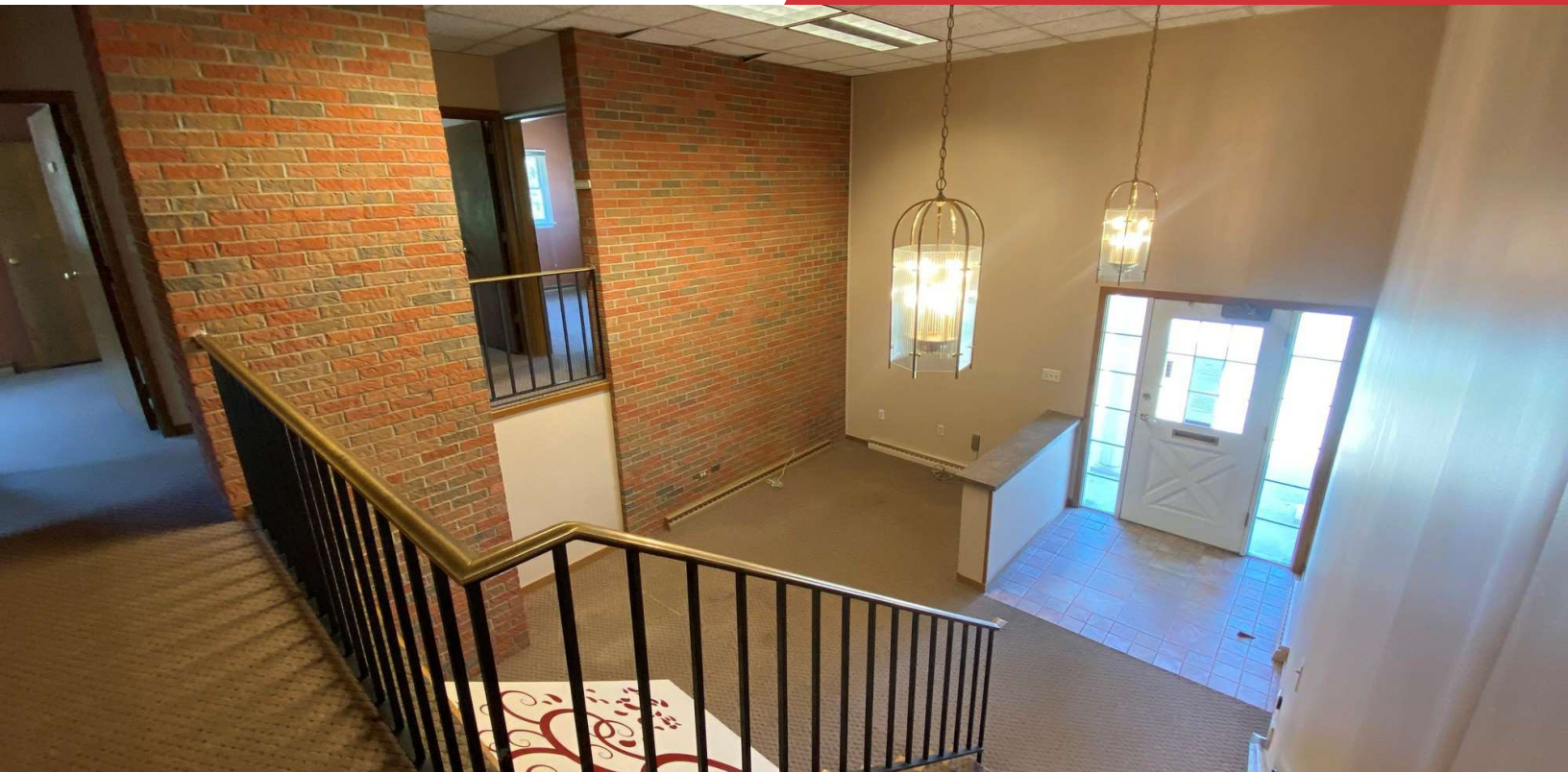


UPPER LEVEL



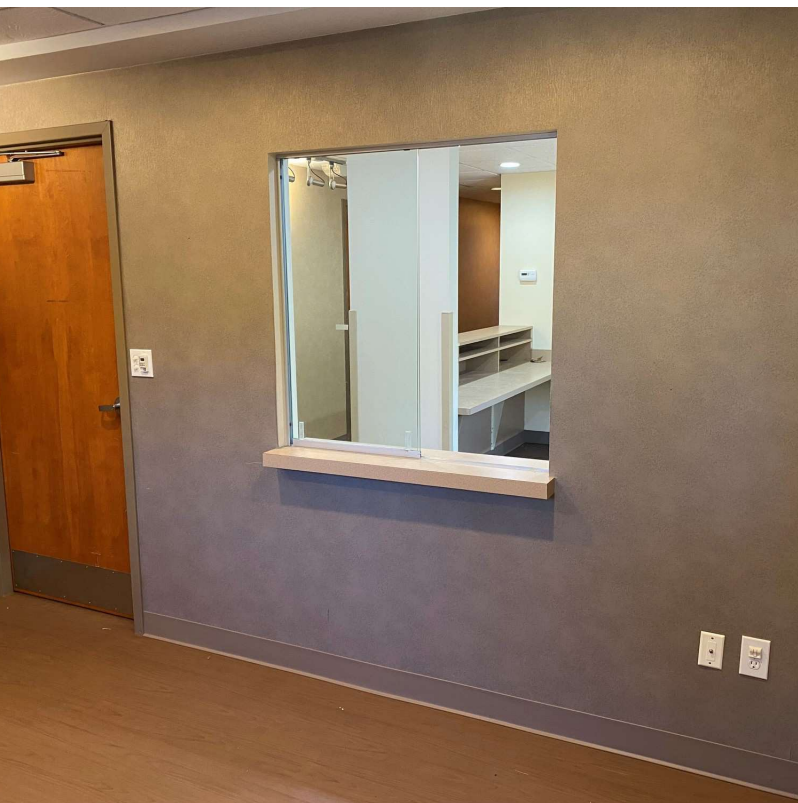
Additional Photos

1430 Michigan St NE
Grand Rapids, Michigan 49503



Additional Photos

1430 Michigan St NE
Grand Rapids, Michigan 49503



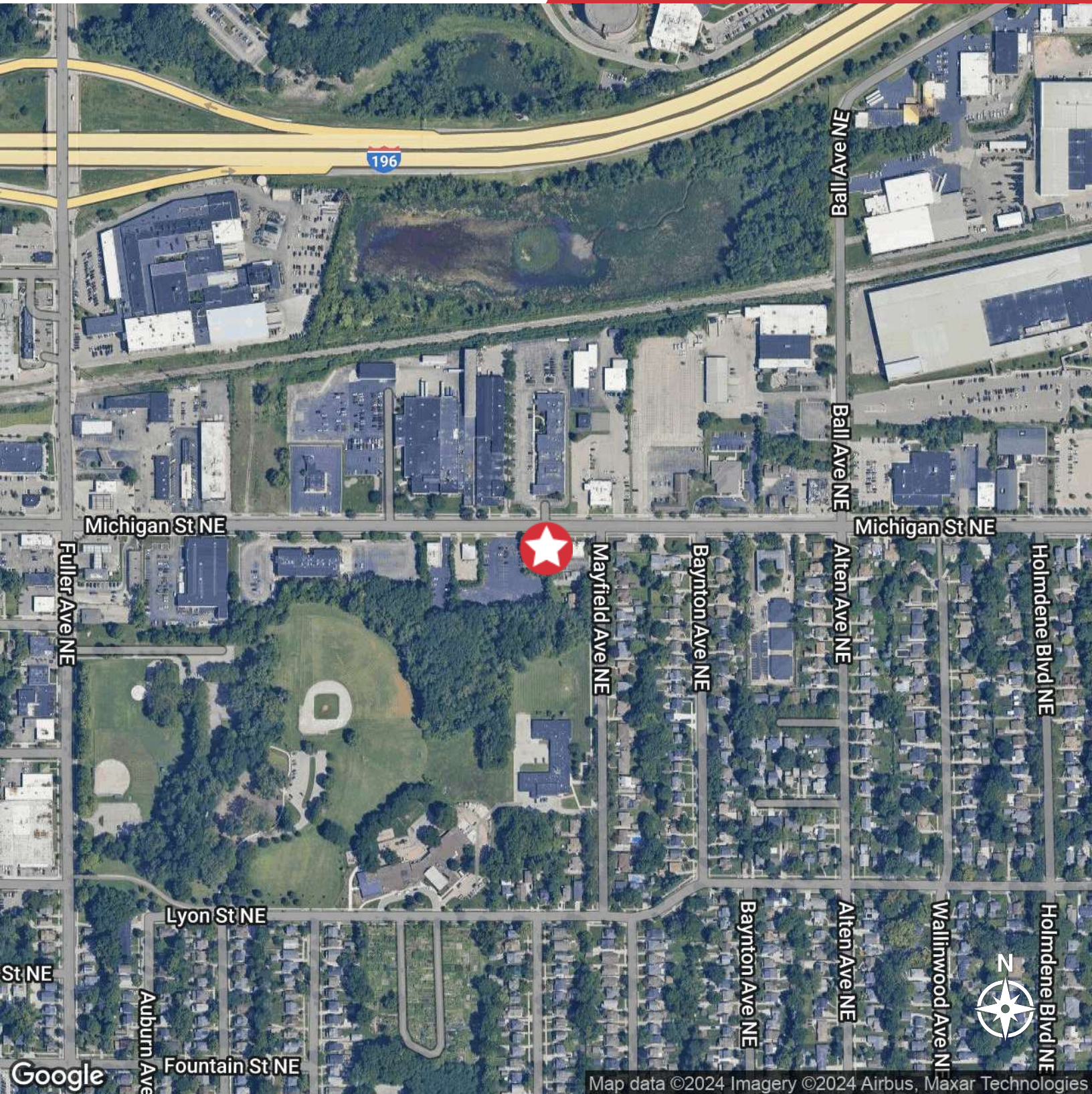
Parcel

1430 Michigan St NE
Grand Rapids, Michigan 49503



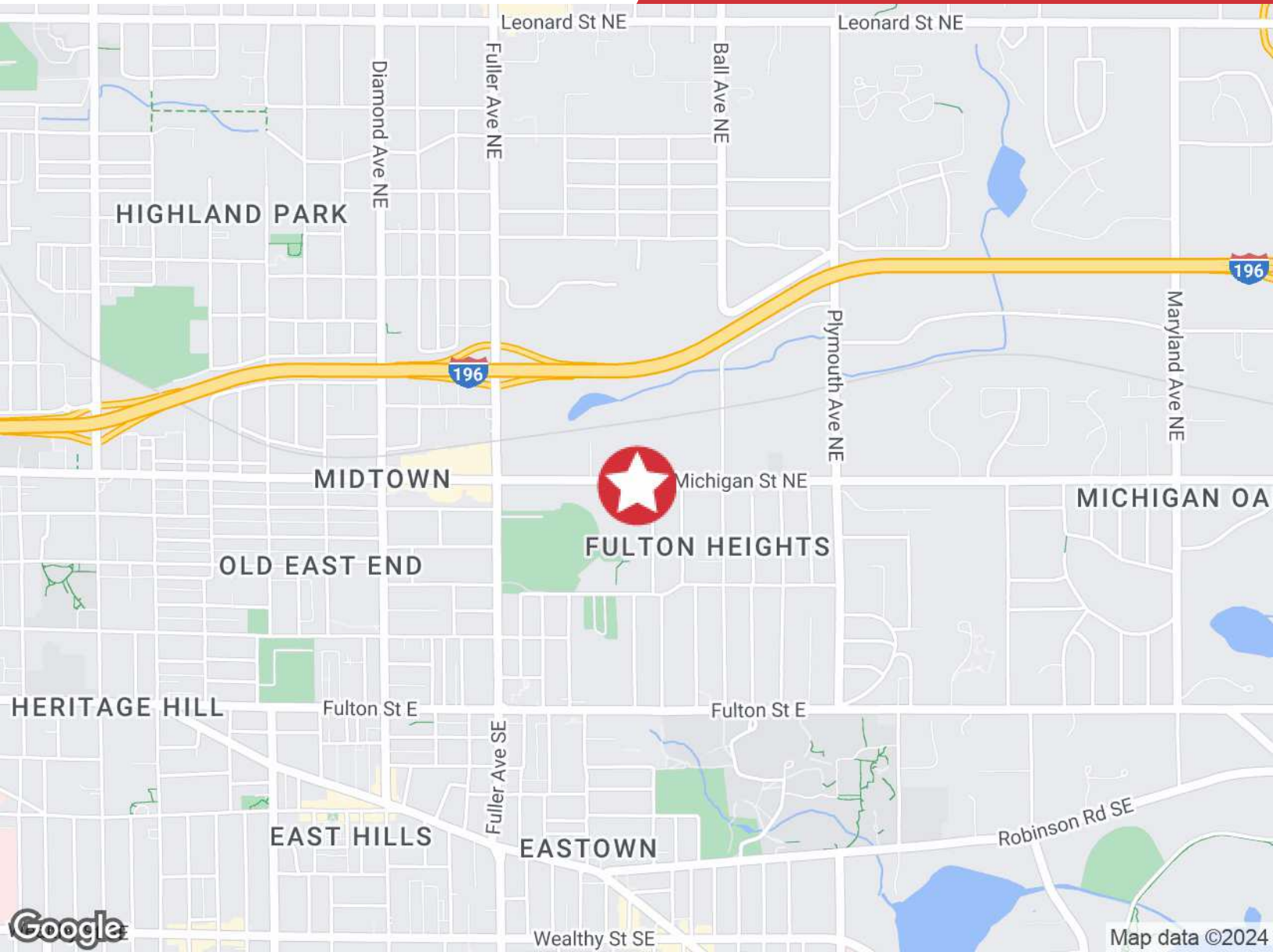
Aerial Map

1430 Michigan St NE
Grand Rapids, Michigan 49503



Location Map

1430 Michigan St NE
Grand Rapids, Michigan 49503



Proximity

| | |
|-------------------|-------------|
| I - 196 | 0.57 Miles |
| I - 96 | 2.51 Miles |
| US - 131 | 2.55 Miles |
| M - 6 @ I - 96 | 11.19 Miles |
| M - 6 @ Broadmoor | 10.71 Miles |
| Airport | 11.68 Miles |