



TRI STATE
COMMERCIAL®
REAL ESTATE EXPERTS

For Lease



Prime Corner Retail Location With Parking & Drive Through Potential

2,500 - 7,500 SF • 1 Unit

3490 Boston Road • Bronx • NY

For Pricing **Call: 718-437-6100**

Shlomi Bagdadi
📞 718.437.6100
sb@tristatecr.com

Dov Bleich
📞 718.437.6100 x111
Dov.B@TriStateCR.com



Location Overview

Located in the prime Williamsbridge neighborhood of the Bronx between Corsa Ave & Eastchester Rd near the Baychester Ave subway station.

Nearest Transit: The 5 train at Baychester Ave near the BX31, BXM10, BX30, 61, 60, 62 bus lines.

Nearby tenants include Burger King, Firestone Complete Auto Care, Popeyes, Flava In Ya Hair, Eastwood Manor, Mega Mart Center, Citizens, Roberts Jewelers, Liberty Tax, Foodtown of Boston Road, JD African Market, El Valle, Domino's Pizza, Arch Auto Parts, Walgreens, US post office, and more!

Main Highlights

- ▶ Prime corner space
- ▶ Drive through potential
- ▶ Parking
- ▶ High visibility
- ▶ High traffic



2,500 SF

Total Building Size



10,000 SF

Lot Size



R5, C2-2

Zoning

FOR LEASE • 1 Unit • 2,500 - 7,500 SF • For Pricing

Call: 718-437-6100

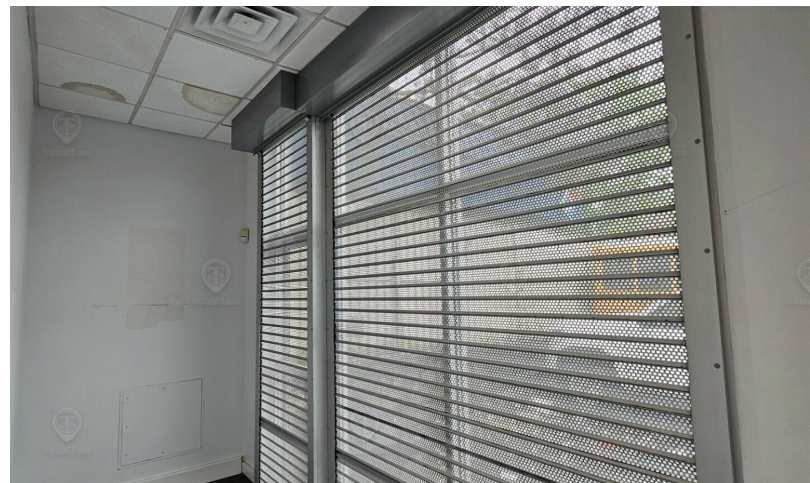
Shlomi Bagdadi
☎ 718.437.6100
sb@tristatecr.com

Dov Bleich
☎ 718.437.6100 x111
Dov.B@TriStateCR.com

Broker is relying on Landlord or other Landlord-supplied sources for the accuracy of said information and has no knowledge of the accuracy of it. Broker makes no representation and/or warranty, expressed or implied, as to the accuracy of such information.

Additional Photos

3490 Boston Road, Bronx, NY 10469



FOR LEASE • 1 Unit • 2,500 - 7,500 SF • For Pricing

Call: 718-437-6100

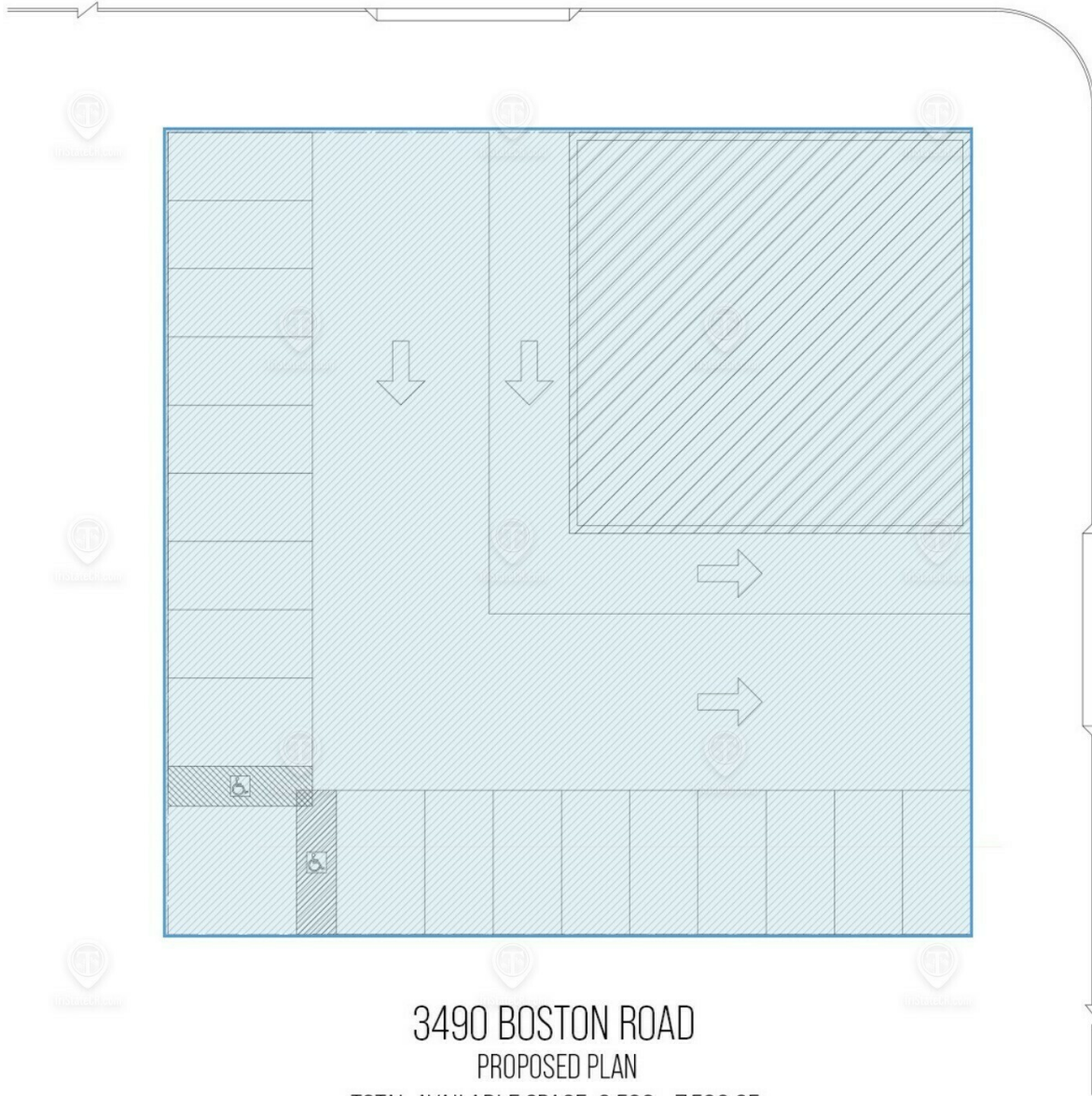
Shlomi Bagdadi
☎ 718.437.6100
sb@tristatecr.com

Dov Bleich
☎ 718.437.6100 x111
Dov.B@TriStateCR.com

Broker is relying on Landlord or other Landlord-supplied sources for the accuracy of said information and has no knowledge of the accuracy of it. Broker makes no representation and/or warranty, expressed or implied, as to the accuracy of such information.

Proposed Floor Plan #1

3490 Boston Road, Bronx, NY 10469



3490 BOSTON ROAD
PROPOSED PLAN
TOTAL AVAILABLE SPACE: 2,500 - 7,500 SF

ALL SQUARE FOOTAGES
ARE APPROXIMATE

FOR LEASE • 1 Unit • 2,500 - 7,500 SF • For Pricing

Call: 718-437-6100

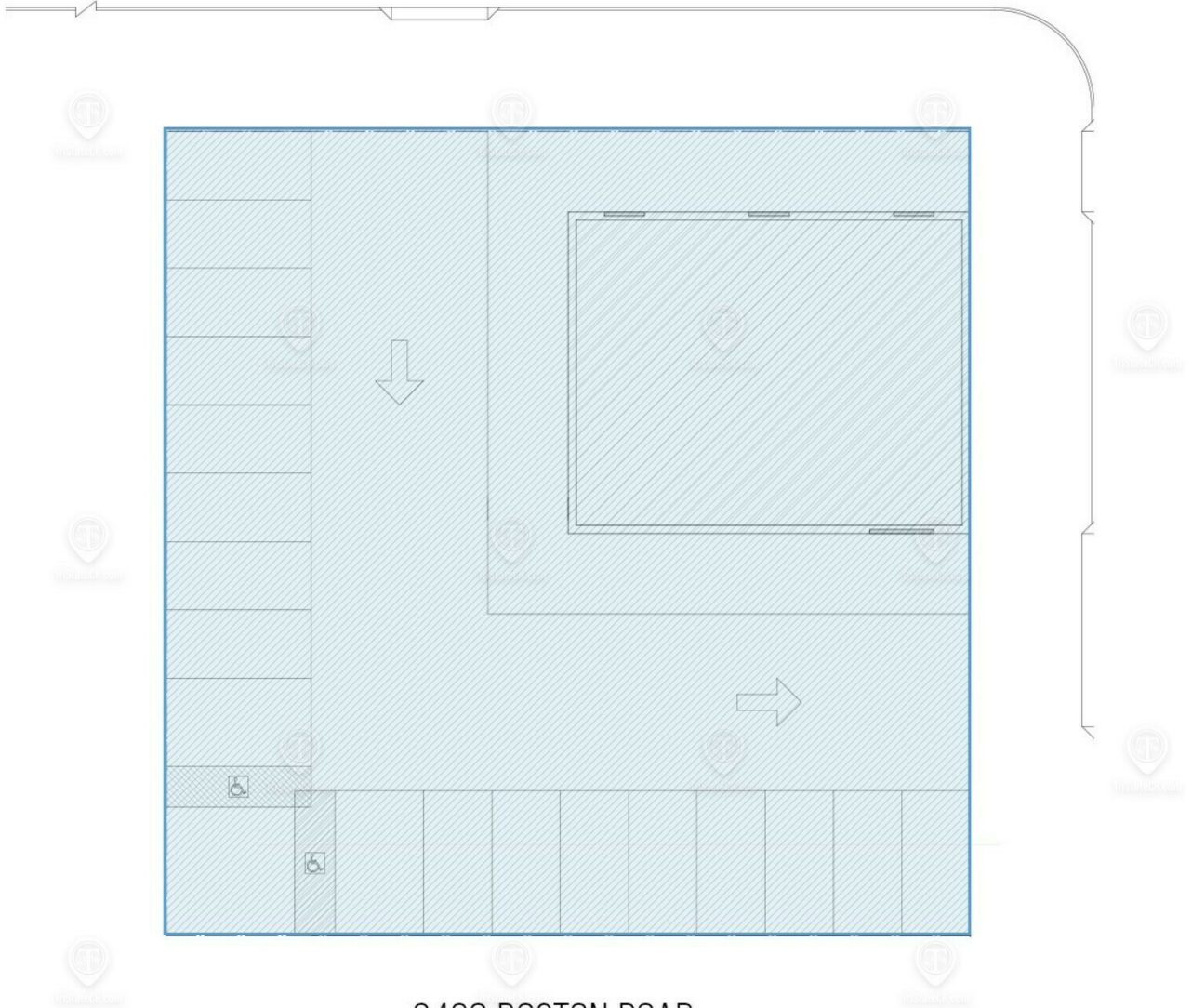
Shlomi Bagdadi
☎ 718.437.6100
sb@tristatecr.com

Dov Bleich
☎ 718.437.6100 x111
Dov.B@TriStateCR.com

Broker is relying on Landlord or other Landlord-supplied sources for the accuracy of said information and has no knowledge of the accuracy of it. Broker makes no representation and/or warranty, expressed or implied, as to the accuracy of such information.

Proposed Floor Plan #2

3490 Boston Road, Bronx, NY 10469



3490 BOSTON ROAD
PROPOSED PLAN
TOTAL AVAILABLE SPACE: 2,500 - 7,500 SF

ALL SQUARE FOOTAGES
ARE APPROXIMATE

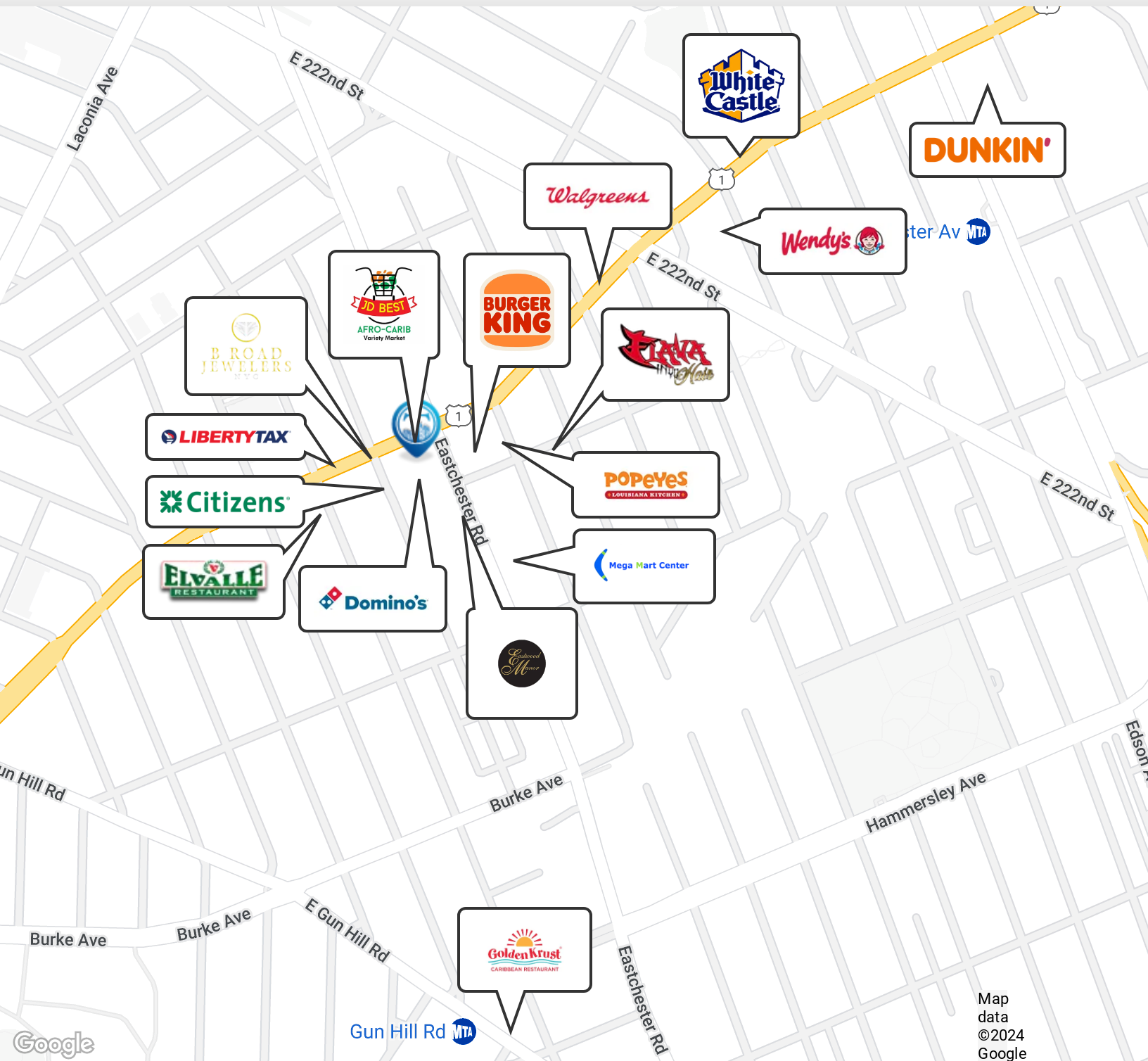
FOR LEASE • 1 Unit • 2,500 - 7,500 SF • For Pricing

Call: 718-437-6100

Shlomi Bagdadi
☎ 718.437.6100
sb@tristatecr.com

Dov Bleich
☎ 718.437.6100 x111
Dov.B@TriStateCR.com

Broker is relying on Landlord or other Landlord-supplied sources for the accuracy of said information and has no knowledge of the accuracy of it. Broker makes no representation and/or warranty, expressed or implied, as to the accuracy of such information.



Map data ©2024 Google

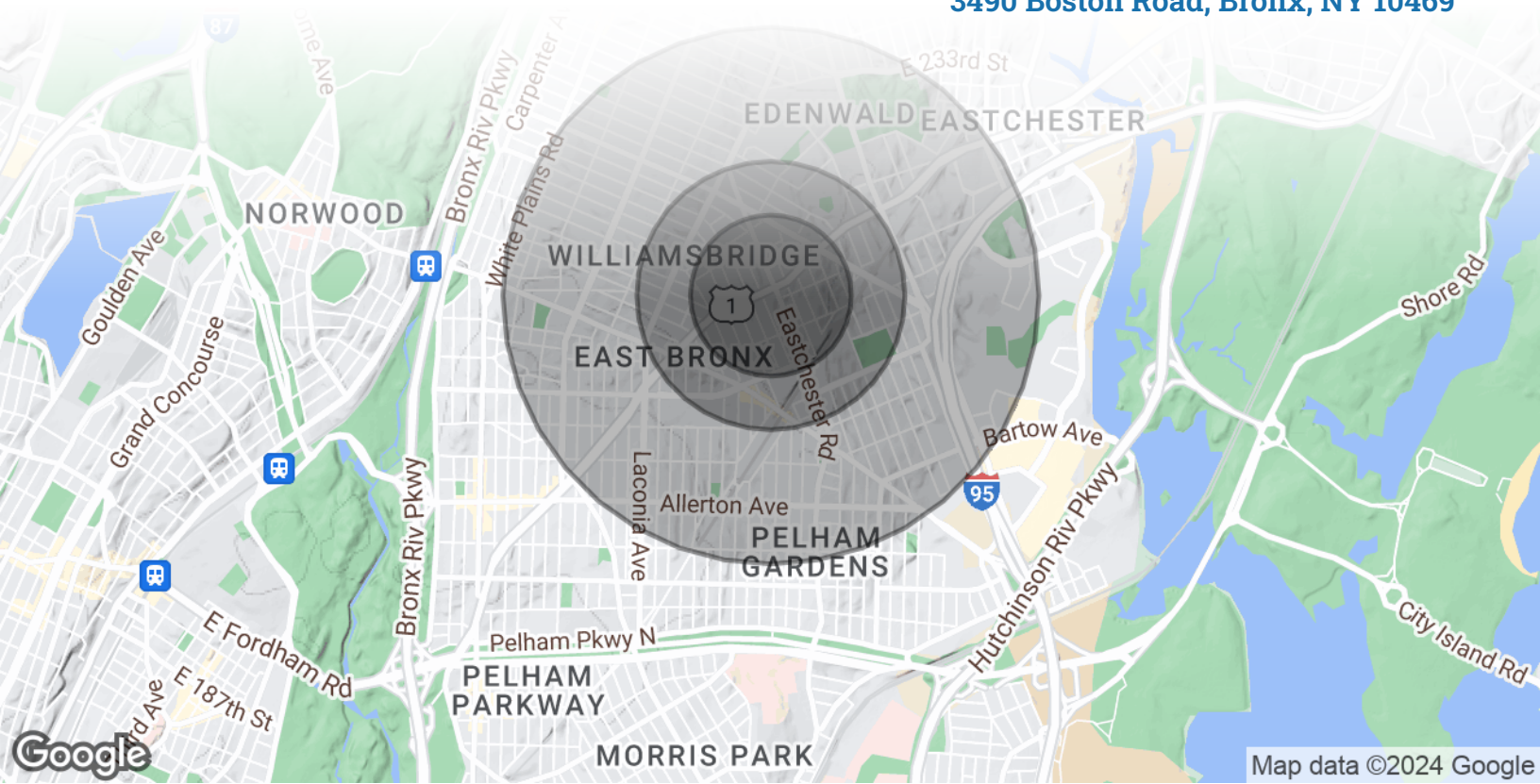
FOR LEASE • 1 Unit • 2,500 - 7,500 SF • For Pricing

Call: 718-437-6100

Shlomi Bagdadi
 ☎ 718.437.6100
 sb@tristatecr.com

Dov Bleich
 ☎ 718.437.6100 x111
 Dov.B@TriStateCR.com

Broker is relying on Landlord or other Landlord-supplied sources for the accuracy of said information and has no knowledge of the accuracy of it. Broker makes no representation and/or warranty, expressed or implied, as to the accuracy of such information.



POPULATION

	0.3 MILES	0.5 MILES	1 MILE
Total Population	8,349	26,489	107,995
Average Age	39	40	41
Average Age (Male)	37	38	39
Average Age (Female)	41	41	43



107,995

People within 1 Mile

HOUSEHOLDS & INCOME

	0.3 MILES	0.5 MILES	1 MILE
Total Households	2,950	8,991	39,137
# of Persons per HH	2.8	2.9	2.8
Average HH Income	\$86,970	\$88,497	\$86,872
Average House Value	\$699,324	\$675,462	\$539,087





\$86,872

Avg Household Income

FOR LEASE • 1 Unit • 2,500 - 7,500 SF • For Pricing

Call: 718-437-6100

Shlomi Bagdadi
 **718.437.6100**
 sb@tristatecr.com

Dov Bleich
 **718.437.6100 x111**
 Dov.B@TriStateCR.com

Broker is relying on Landlord or other Landlord-supplied sources for the accuracy of said information and has no knowledge of the accuracy of it. Broker makes no representation and/or warranty, expressed or implied, as to the accuracy of such information.

For Lease



TriStateCR.com

2,500 - 7,500 SF | 3490 Boston
Road | Prime Corner Retail
Location With Parking & Drive
Through Potential for Lease

1 Unit • 2,500 - 7,500 SF • For Pricing **Call: 718-437-6100**

3490 Boston Road • Bronx • NY

Shlomi Bagdadi
☎ 718.437.6100
sb@tristatecr.com

Dov Bleich
☎ 718.437.6100 x111
Dov.B@TriStateCR.com

SITE SOURCE
RETAIL BROKER NETWORK