



**5070 Cascade Road Southeast
Grand Rapids, Michigan 49546**

Property Highlights

- 2,114 SF Office Suite on First Floor
- Open Floor Plan with Break Room
- Monument Signage Available
- Ample On - Site Parking
- New Security System



For More Information

Jason Makowski, SIOR

O: 616 575 7034 | C: 616 262 8532
jasonm@naiwwm.com

Mary Anne Wisinski-Rosely, SIOR, CCIM

O: 616 575 7047 | C: 616 450 7307
mawr@naiwwm.com

Property Overview

5070 Cascade Road Southeast
Grand Rapids, Michigan 49546

Property Overview

2,114 SF of office space available within this nicely finished multi-tenant professional office building. Open floor plan with breakroom. Suite located on the main floor right off the main entrance. Monument signage available. Ample on-site parking. Call Listing Agent for additional details.

Property Information

Location:	Forest Hills and Spaulding
Total Building Size:	30,501 SF
Municipality:	Ada Township
PPN:	41-15-31-376-012
Year Built:	2005
Acreage:	1.8 Acres
Signage:	Monument
Parking:	Surface, On-Site; Ample Spaces
Zoning:	PO / PUD
Building Class:	B



Lease Overview

5070 Cascade Road Southeast
Grand Rapids, Michigan 49546

Lease Information

Lease Type:	NNN
Terms:	36 - 60 Months
Tenant Provides:	Air Conditioning, Electric, Gas/Heat, Insurance, Janitorial, Phone, Refuse Removal, Sewer, Snow Removal, Taxes, Water
Landlord Provides:	None

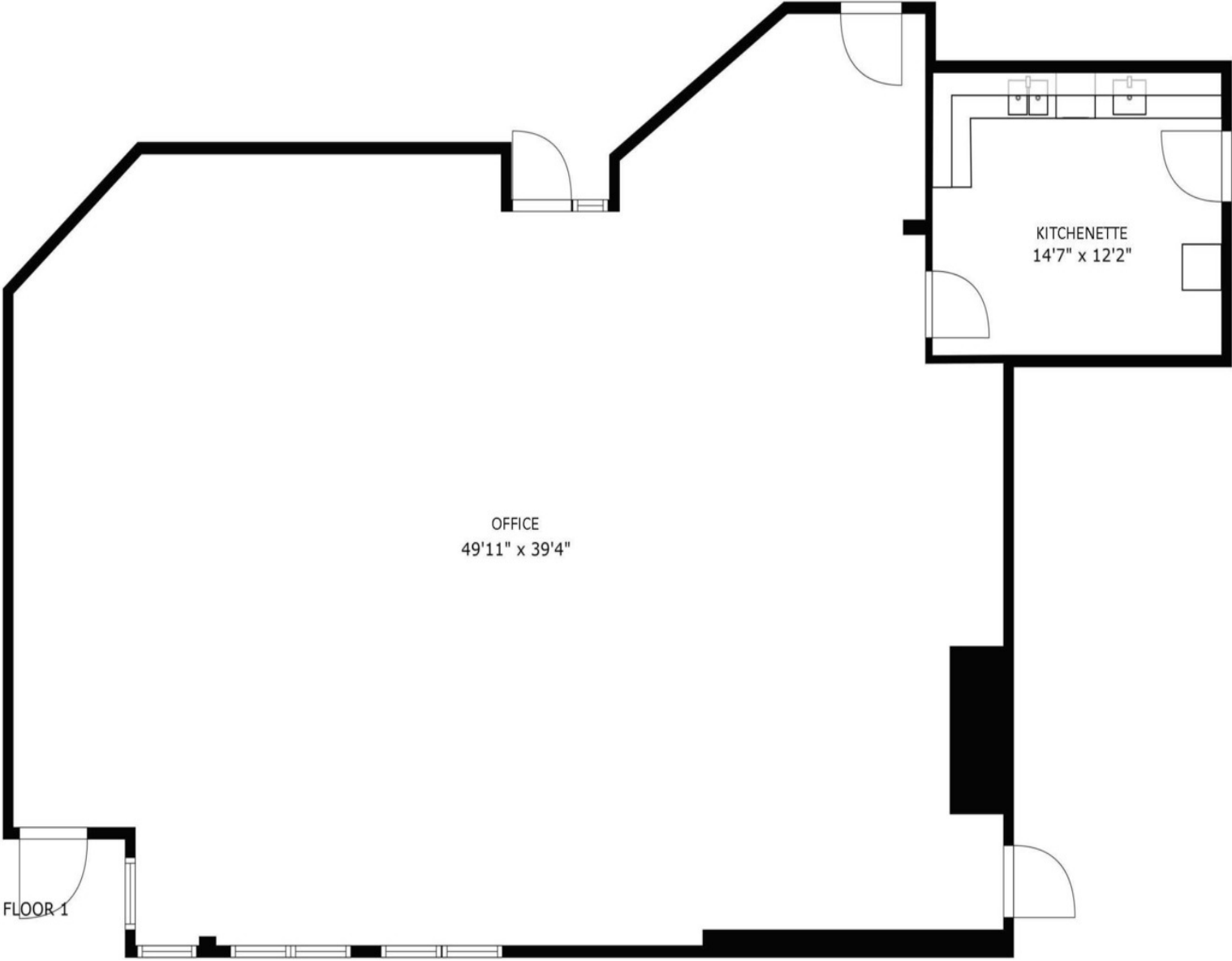
Availability

SUITE	RENTABLE SF	RATE / SF / YR	MONTHLY RENT	CAM / MONTH APPROX \$6.60/SF	TOTAL MONTHLY RENT
1	2,114 SF	\$11.50	\$2,025.92	\$1,162.70	\$3,188.62



Floor Plans

5070 Cascade Road Southeast
Grand Rapids, Michigan 49546



Additional Photos

5070 Cascade Road Southeast
Grand Rapids, Michigan 49546



CASCADE TRAILS PROFESSIONAL BUILDING

- | | |
|-----|--|
| 100 | Purposeful Wealth Strategies |
| 120 | Lighthouse Title Group |
| 140 | |
| 150 | Peterson Financial Strategies |
| 202 | Grand Rapids Orthopedics
Peter S. Vaslu, D.O., P.C. |
| 204 | Forest Hills Endodontics |
| 210 | Optimal Wellness Medical Group
Steve R. Lasater, M.D. |
| 220 | The Pretzel Company |
| 250 | Kentwood Family Physicians, PC |



Parcel

5070 Cascade Road Southeast
Grand Rapids, Michigan 49546



Location Map

5070 Cascade Road Southeast
Grand Rapids, Michigan 49546

