



2500 W. 49th Street

Sioux Falls, SD 57105

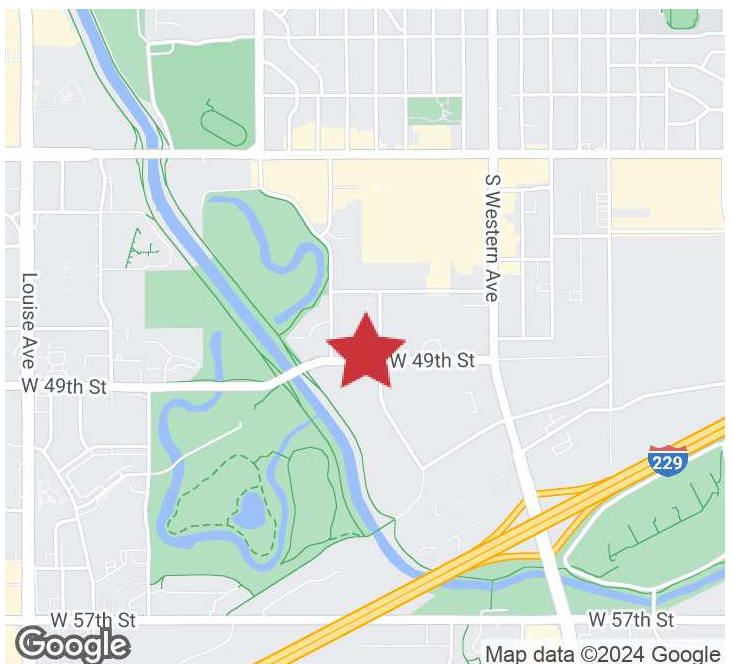
PROPERTY HIGHLIGHTS

- Upper level office suites in multi-tenant office building
- **Suite 203:** Open work space, conference room, 3 private offices, and a storage room - some furniture is available for the future tenant - Available October 1
- **Suite 208, 215, & 225:** Executive offices
- Professional tenant mix
- Monument signage negotiable

LOCATION DESCRIPTION

Located on the corner of W. 49th Street & S. Elmwood Avenue between Western & Kiwanis
 Within blocks of 41st Street retail corridor
 Area neighbors include The Western Mall, Runnings, Voyage, Helpline Center, Active Generations

Suite 203 - 1,348 SF	\$2,250/MO GROSS
Suite 208 - 132.5 SF	\$325/MO GROSS
Suite 215 - 336 SF	\$650/MO GROSS
Suite 225 - 182.7 SF	\$370/MO GROSS



CRAIG HAGEN, CCIM, SIOR
 Senior Vice President
 chagen@naisiouxfalls.com
 605.310.4227

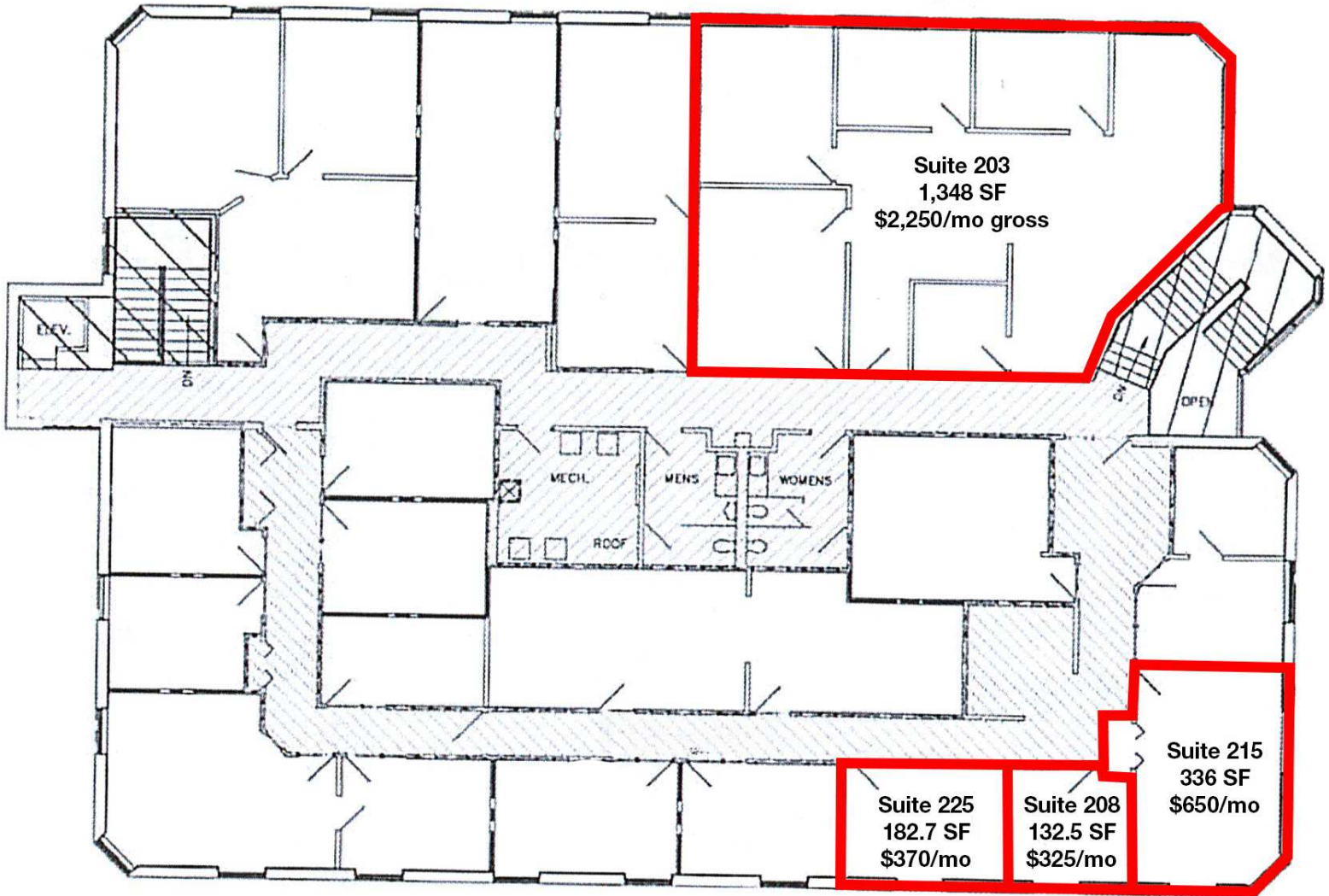
2500 W. 49th St. Suite 100
 Sioux Falls, SD 57105
 605.357.7100
 naisiouxfalls.com

FLOOR PLAN

2500 W. 49TH STREET
Sioux Falls, SD 57105

FOR LEASE

Office Suites



SUITE 203 PHOTOS

2500 W. 49TH STREET
Sioux Falls, SD 57105

FOR LEASE

Office Suites

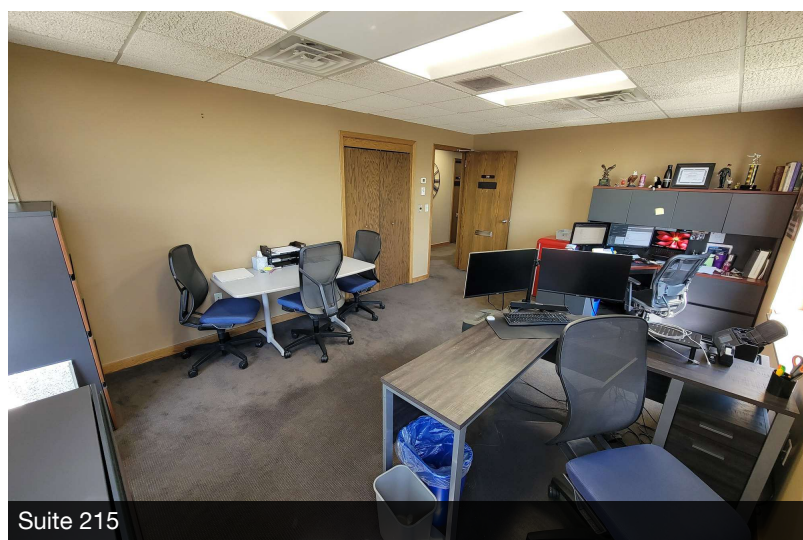
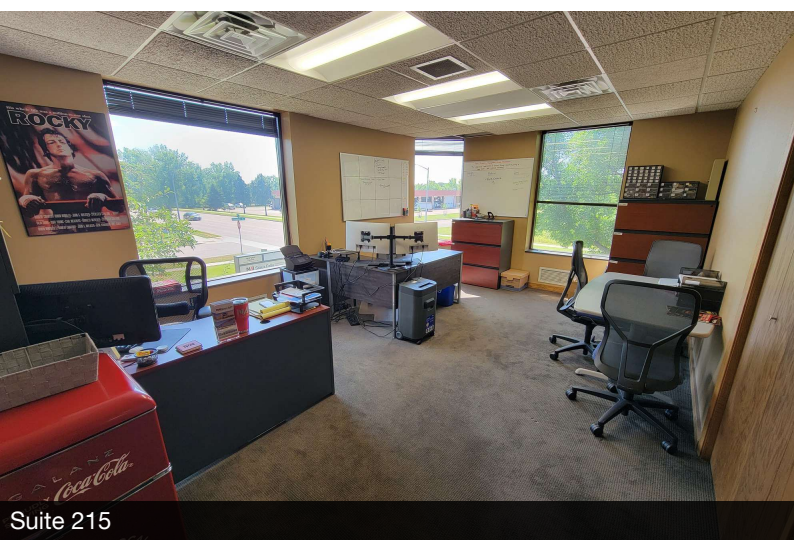
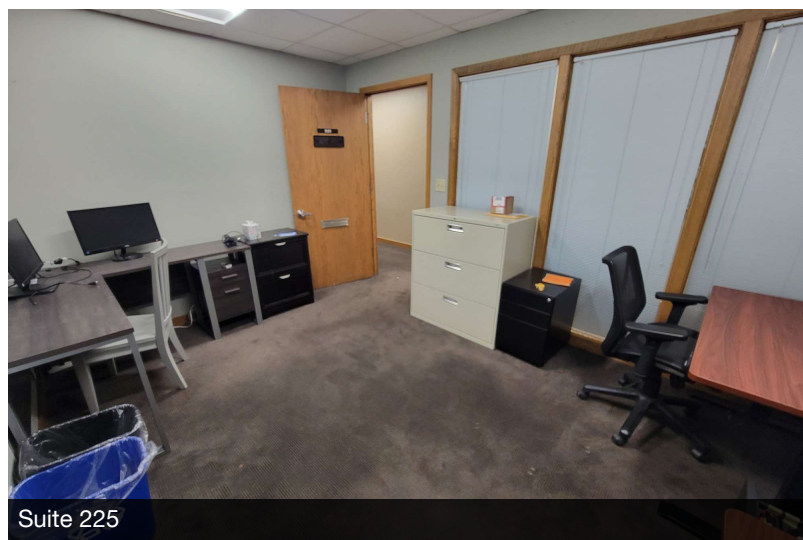
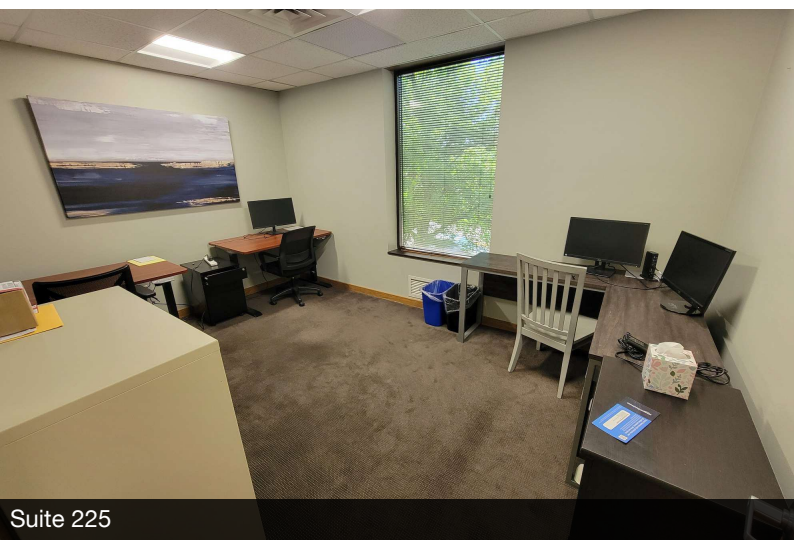
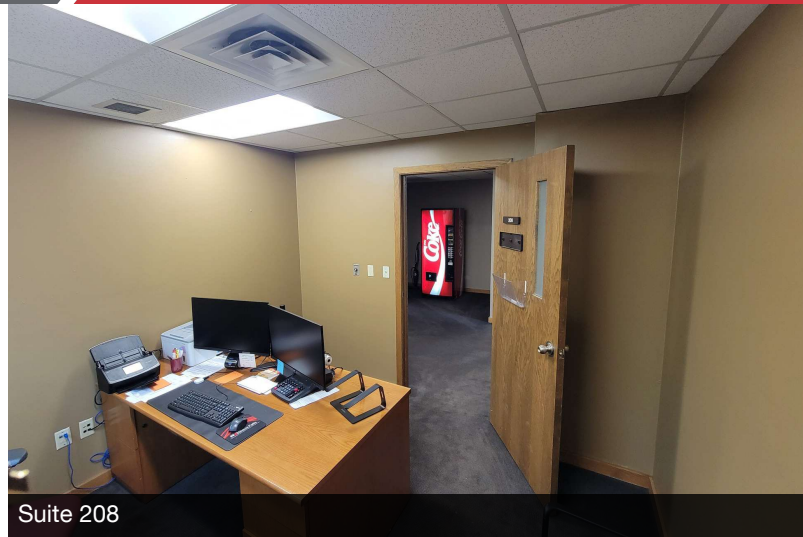
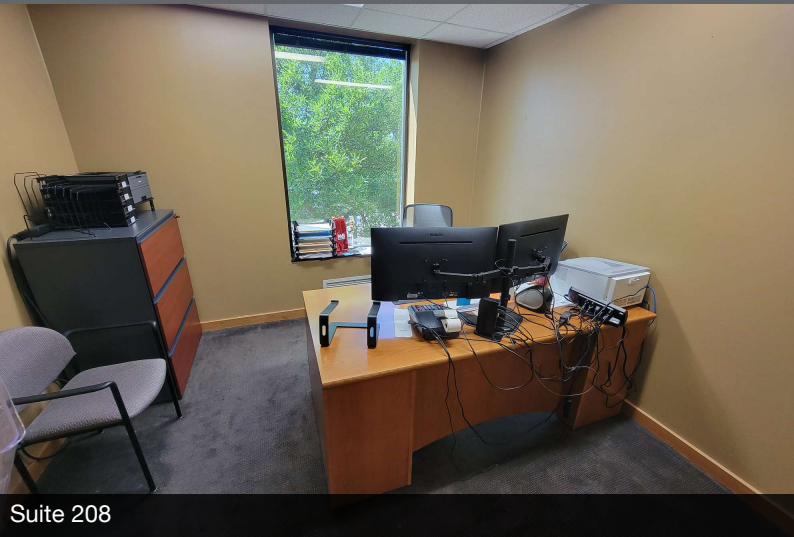


SUITES 208, 215, 225 PHOTOS

2500 W. 49TH STREET
Sioux Falls, SD 57105

FOR LEASE

Office Suites

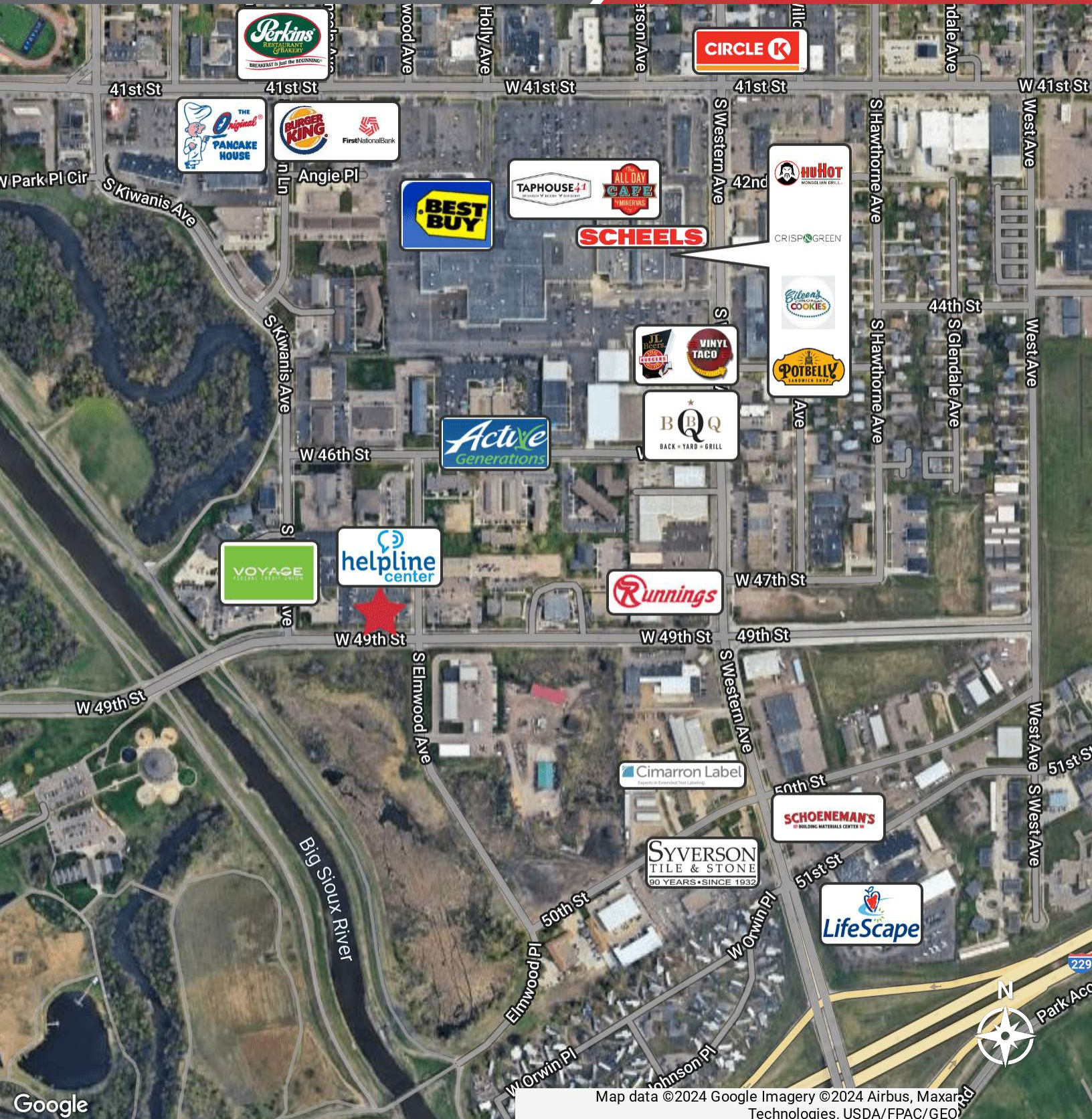


AERIAL

2500 W. 49TH STREET
Sioux Falls, SD 57105

FOR LEASE

Office Suites



Google

Map data ©2024 Google Imagery ©2024 Airbus, Maxar Technologies, USDA/FPAC/GeoEye

