

AUSTIN'S PREMIER WATERFRONT WORKSPACE

# PLAZA ON THE LAKE



**Jeff Henley** | 512.413.5601 | [jeff@kuceraco.com](mailto:jeff@kuceraco.com)

**Graham Trull** | 512.484.8909 | [graham.trull@kuceraco.com](mailto:graham.trull@kuceraco.com)

[www.kuceraco.com](http://www.kuceraco.com) • **5001 PLAZA ON THE LAKE DRIVE** • (737) 346-5164

All information contained herein, while based on information deemed reliable, has been gathered from various third-party sources, is not in any way warranted by The Kucera Companies, may not be entirely complete or accurate, and is subject to corrections, errors and/or omissions. This listing is subject to prior sale, lease, change in price and/or removal from the market without notice. The user of any information contained herein should conduct his/her own independent research including, without limitation, obtaining its own counsel and the advice of a real estate professional.



Reserved Garage Parking  
Fitness Facility  
Locker Rooms + Showers  
Direct Access to Lake Austin + Boat Dock  
Unparalleled Views of 360 Bridge, Lake, and Austin Hill Country

Plaza on the Lake is located in Southwest Austin, an area recognized by its rolling hills, affluent residential areas and low-density population. The area is at the center of the software development corridor along Capital of Texas Highway. The property is situated on an 11.9-acre site on Lake Austin at Capital of Texas Highway. Located across the road from the site is the Austin Country Club and Davenport Ranch, a high-end residential neighborhood occupied by decision makers and senior

management of the Austin corporate structure. The site is unique because of the proximity to other major office locations and neighborhoods likely for office users. The site also provides views of Lake Austin, Austin Country Club golf course, and Texas hill country. Access, coupled with beautiful views, make this site one of the most attractive in the Austin market.

## PLAZA ON THE LAKE • CLASS A OFFICE SPACE



3

Jeff Henley | 512.413.5601 | [jeff@kuceraco.com](mailto:jeff@kuceraco.com)

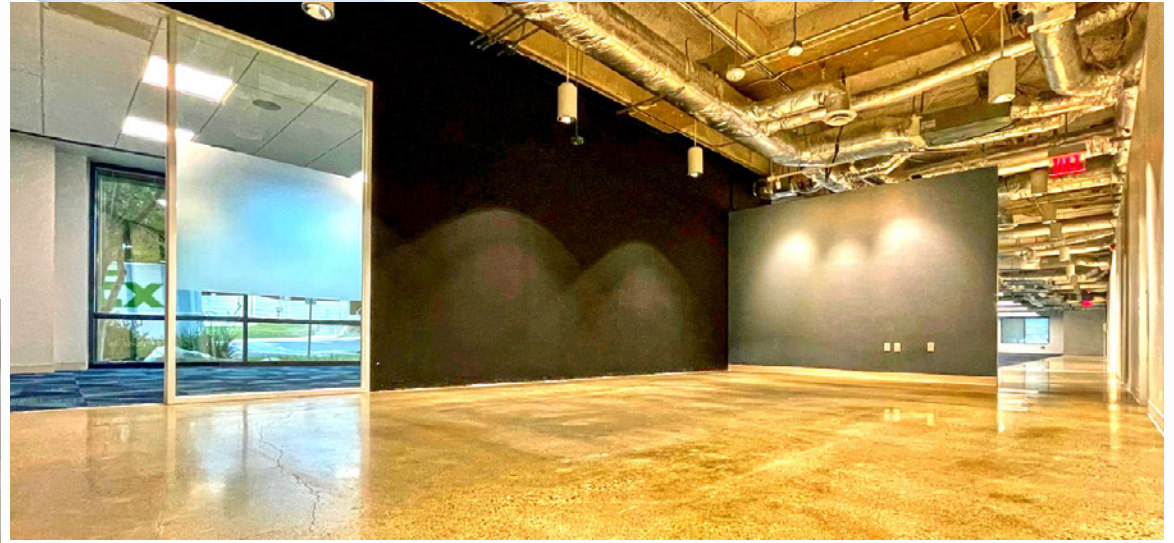
Graham Trull | 512.484.8909 | [graham.trull@kuceraco.com](mailto:graham.trull@kuceraco.com)

[www.kuceraco.com](http://www.kuceraco.com) • 5001 PLAZA ON THE LAKE DRIVE • (737) 346-5164

All information contained herein, while based on information deemed reliable, has been gathered from various third-party sources, is not in any way warranted by The Kucera Companies, may not be entirely complete or accurate, and is subject to corrections, errors and/or omissions. This listing is subject to prior sale, lease, change in price and/or removal from the market without notice. The user of any information contained herein should conduct his/her own independent research including, without limitation, obtaining its own counsel and the advice of a real estate professional.

# PLAZA ON THE LAKE • CLASS A OFFICE SPACE

## SUITE I-101 PHOTOS



# PLAZA ON THE LAKE • CLASS A OFFICE SPACE

## \$29.00/RSF\* + \$19.26 NNN

+SUBJECT TO SIZE, TERM AND SUITE LOCATION



Free Structured Parking  
4.4:1,000 RSF Parking Ratio



Gym, Showers and Lockers



Daily Food Trucks



Electric vehicle charging station



Shaded outdoor picnic area



Hike and Bike Trail

**9,602 RSF**  
SUITE I-100



CLICK HERE TO VIEW  
A VIDEO OF THIS SPACE.

CLICK HERE TO VIEW  
A VIDEO OF THIS SPACE.



**20,110 RSF**  
SUITE I-111



5

Jeff Henley | 512.413.5601 | [jeff@kuceraco.com](mailto:jeff@kuceraco.com)

Graham Trull | 512.484.8909 | [graham.trull@kuceraco.com](mailto:graham.trull@kuceraco.com)

[www.kuceraco.com](http://www.kuceraco.com) • 5001 PLAZA ON THE LAKE DRIVE • (737) 346-5164

All information contained herein, while based on information deemed reliable, has been gathered from various third-party sources, is not in any way warranted by The Kucera Companies, may not be entirely complete or accurate, and is subject to corrections, errors and/or omissions. This listing is subject to prior sale, lease, change in price and/or removal from the market without notice. The user of any information contained herein should conduct his/her own independent research including, without limitation, obtaining its own counsel and the advice of a real estate professional.

# PLAZA ON THE LAKE • CLASS A OFFICE SPACE

## \$29.00/RSF\* + \$19.26 NNN

+SUBJECT TO SIZE, TERM AND SUITE LOCATION



Free Structured Parking  
4.4:1,000 RSF Parking Ratio



Gym, Showers and Lockers



Daily Food Trucks



Electric vehicle charging station



Shaded outdoor picnic area



Hike and Bike Trail

8,936 RSF  
SUITE I-250

11,808 RSF  
SUITE I-225

FLOOR 2  
FULL FLOOR AVAILABLE  
41,929 RSF

21,182 RSF  
SUITE I-200



# PLAZA ON THE LAKE • CLASS A OFFICE SPACE

## \$29.00/RSF\* + \$19.26 NNN

+SUBJECT TO SIZE, TERM AND SUITE LOCATION

**16,805 RSF**  
SUITE I-300



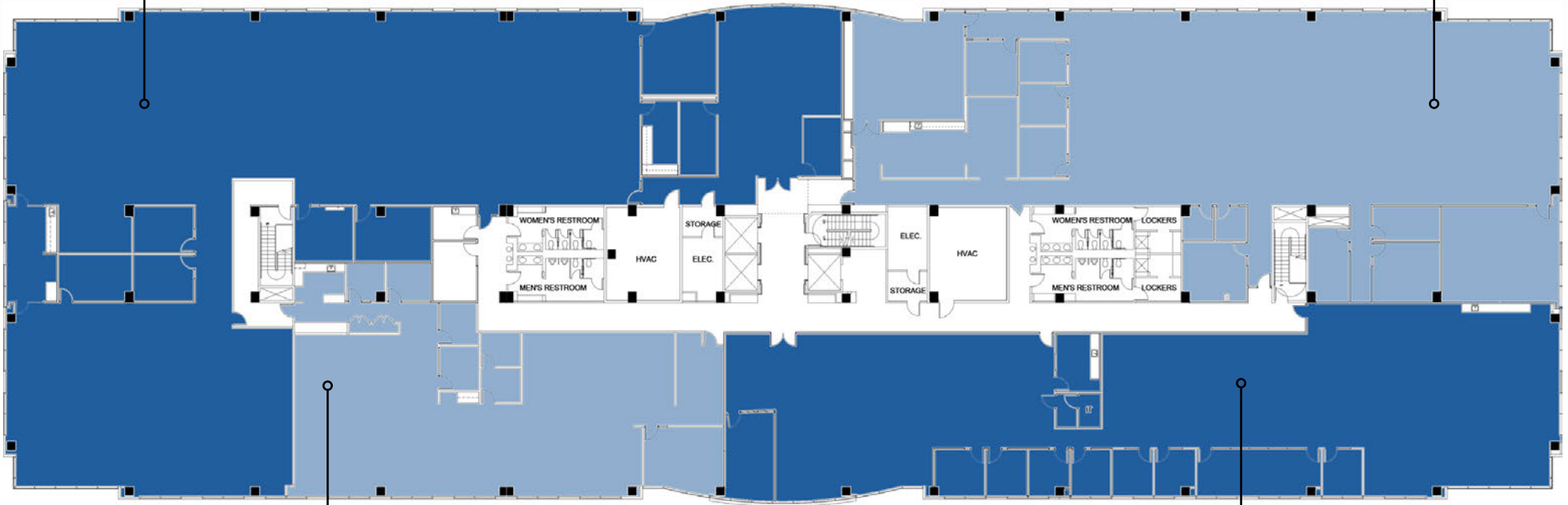
CLICK HERE TO VIEW  
A VIDEO OF THIS SPACE.

**FLOOR 3  
FULL FLOOR AVAILABLE  
44,378 RSF**

CLICK HERE TO VIEW  
A VIDEO OF THIS SPACE.



**11,860 RSF**  
SUITE I-305



**5,694 RSF**  
SUITE I-315



CLICK HERE TO VIEW  
A VIDEO OF THIS SPACE.

CLICK HERE TO VIEW  
A VIDEO OF THIS SPACE.



**10,019 RSF**  
SUITE I-310 & 320

7

Jeff Henley | 512.413.5601 | [jeff@kuceraco.com](mailto:jeff@kuceraco.com)

Graham Trull | 512.484.8909 | [graham.trull@kuceraco.com](mailto:graham.trull@kuceraco.com)

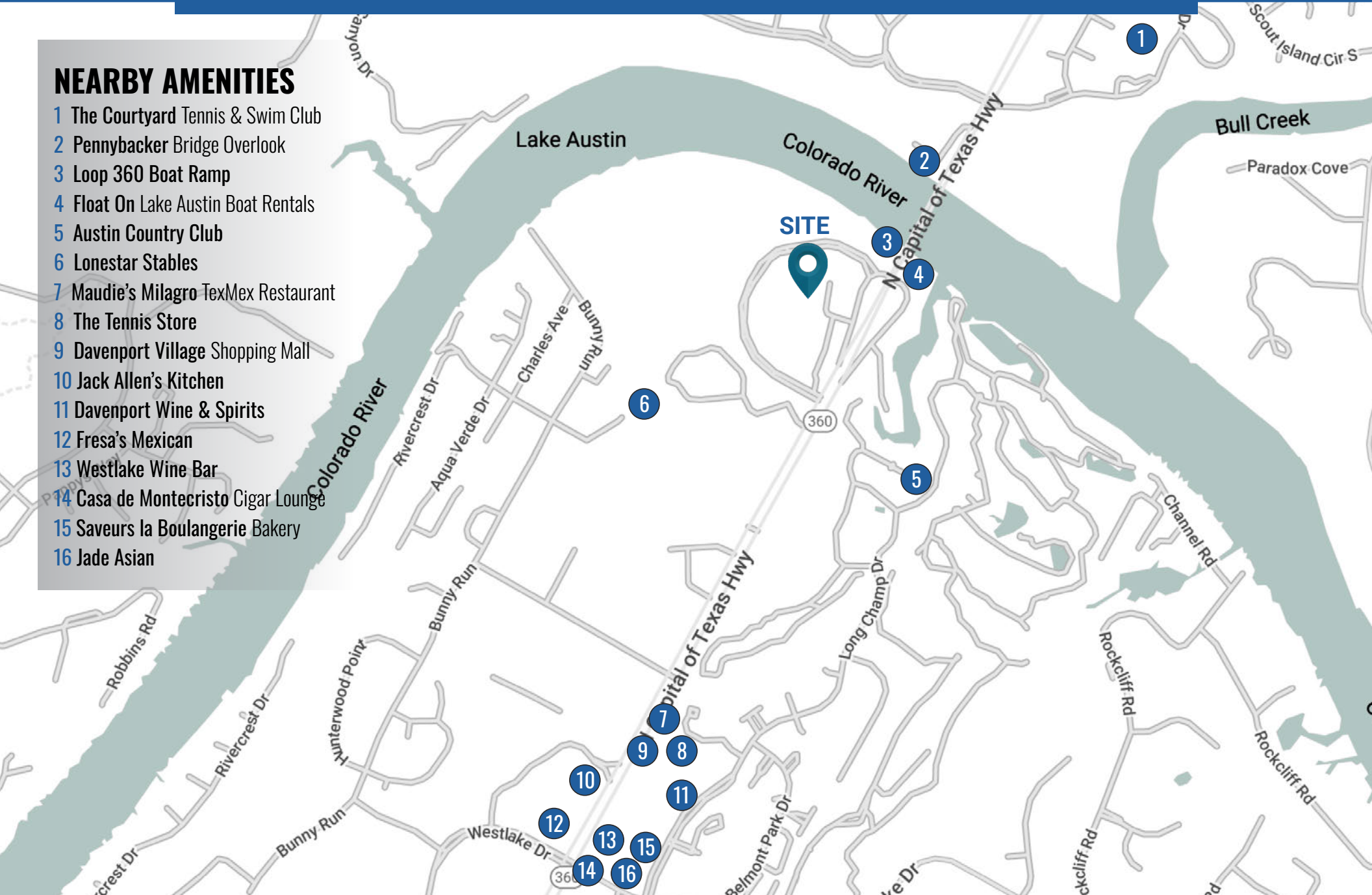
[www.kuceraco.com](http://www.kuceraco.com) • 5001 PLAZA ON THE LAKE DRIVE • (737) 346-5164

All information contained herein, while based on information deemed reliable, has been gathered from various third-party sources, is not in any way warranted by The Kucera Companies, may not be entirely complete or accurate, and is subject to corrections, errors and/or omissions. This listing is subject to prior sale, lease, change in price and/or removal from the market without notice. The user of any information contained herein should conduct his/her own independent research including, without limitation, obtaining its own counsel and the advice of a real estate professional.

## PLAZA ON THE LAKE • CLASS A OFFICE SPACE

### NEARBY AMENITIES

- 1 The Courtyard Tennis & Swim Club
- 2 Pennybacker Bridge Overlook
- 3 Loop 360 Boat Ramp
- 4 Float On Lake Austin Boat Rentals
- 5 Austin Country Club
- 6 Lonestar Stables
- 7 Maudie's Milagro TexMex Restaurant
- 8 The Tennis Store
- 9 Davenport Village Shopping Mall
- 10 Jack Allen's Kitchen
- 11 Davenport Wine & Spirits
- 12 Fresa's Mexican
- 13 Westlake Wine Bar
- 14 Casa de Montecristo Cigar Lounge
- 15 Saveurs la Boulangerie Bakery
- 16 Jade Asian





**FOR LEASING INFO, PLEASE CONTACT**

Jeff Henley | 512.413.5601 | [jeff@kuceraco.com](mailto:jeff@kuceraco.com)

Graham Trull | 512.484.8909 | [graham.trull@kuceraco.com](mailto:graham.trull@kuceraco.com)