



3000 E. 69th Street
Sioux Falls, SD 57108

Sale Price	\$14.00-\$16.00/SF
East Lot	+/- 0.75 AC (32,670 SF)
West Lot	+/- 2.6 AC (113,256 SF)

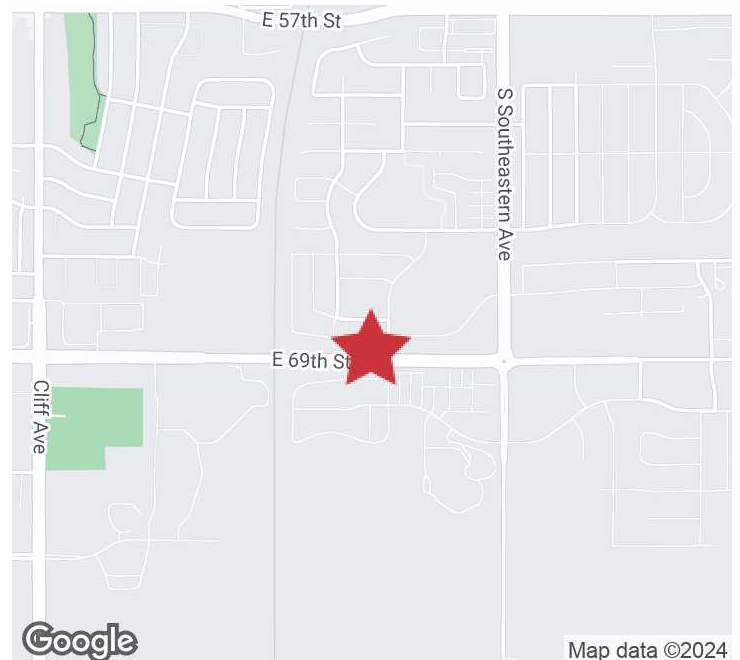
PROPERTY HIGHLIGHTS

- Commercial & office zoned land for sale along 69th Street
- Access into the development from 69th Street and Tanner Avenue
- Utilities are available to the site
- Parcel west of Tanner Avenue can be subdivided
- Just down the street from 69th Street & Cliff Avenue growing developments
- Zoning: C-2/Office
- 69th Street Traffic Count: 14,000 vpd

LOCATION DESCRIPTION

Conveniently located in a growing service-based area of southeast Sioux Falls

Area neighbors include GreatLife Performance & Fitness Center, Southeastern Dental Center, Artistry Dance Studio, Ag Resource Management, Paige Goldade Photography, Dakota CPA, The Osborne Team at CrossCountry Mortgage, The Locale Townhomes



MARCUS MAHLEN, CCIM, SIOR
Chief Business Development Officer, SVP
mmahlen@naisiouxfalls.com
605.228.9744

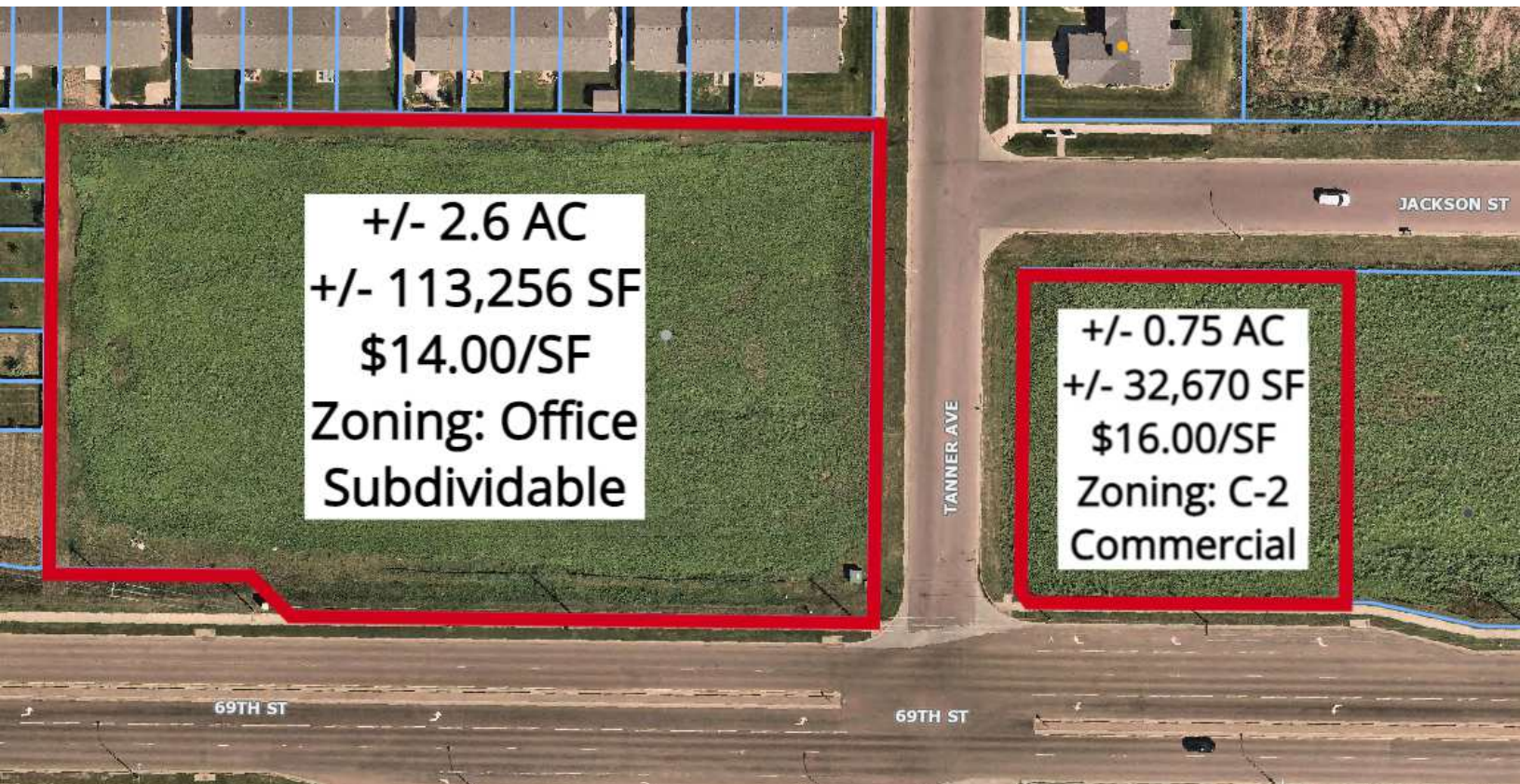
2500 W. 49th St. Suite 100
Sioux Falls, SD 57105
605.357.7100
naisiouxfalls.com

SITE PLAN

3000 E. 69TH STREET
Sioux Falls, SD 57108

FOR SALE

Land



AERIAL

3000 E. 69TH STREET
Sioux Falls, SD 57108

FOR SALE

Land



Google

Map data ©2024 Imagery ©2024 Airbus, Maxar Technologies, USDA/FPAC/GEO