



2.25 AC - NEC Pleasant View & 5th Ave. Post Falls, Idaho

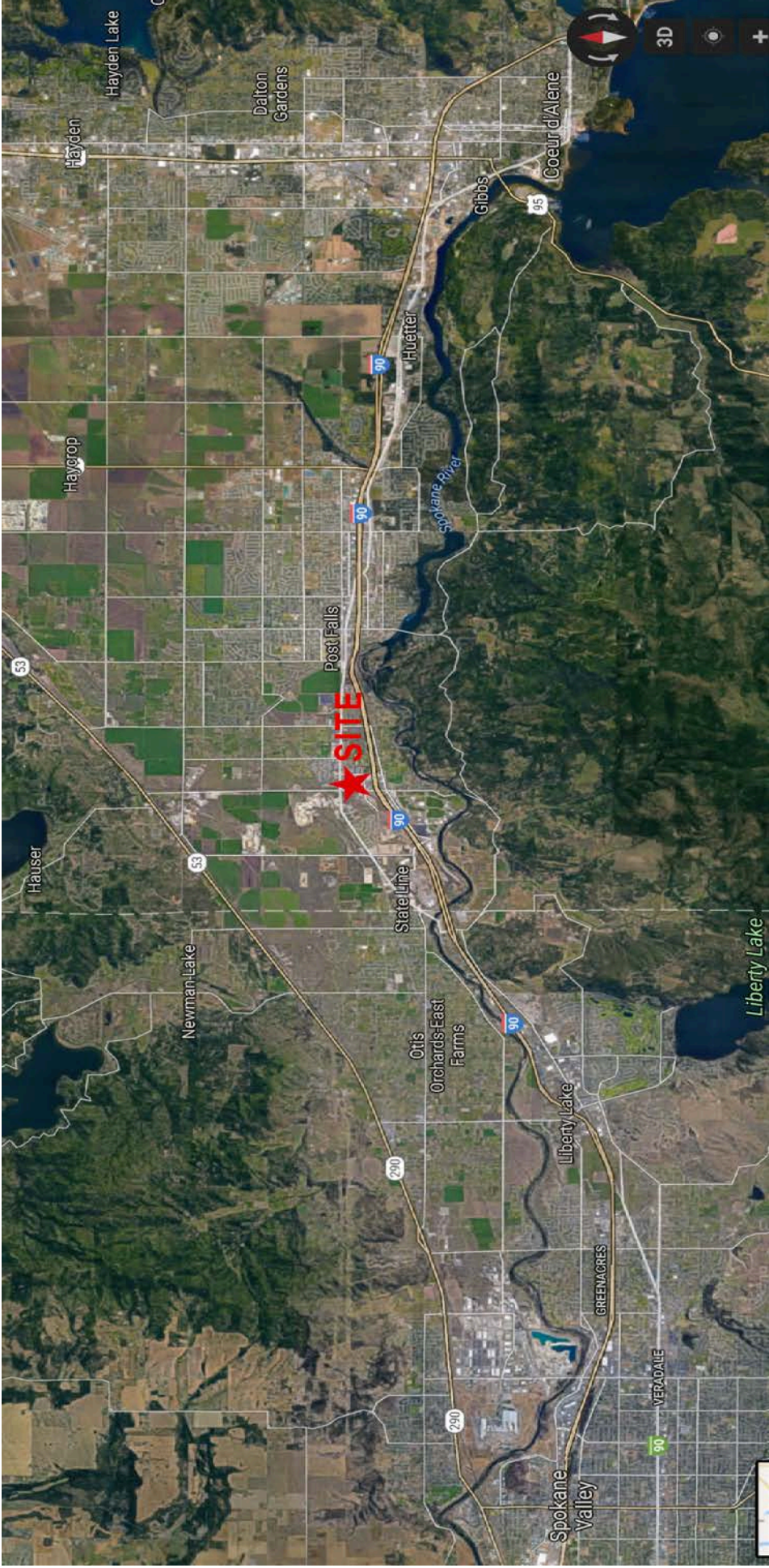
Prime Development Opportunity

- Hard corner signalized intersection
- High visibility
- Immediately North of Pleasant View/I-90 FWY exchange
- Between Loves & Flying J Travel Centers
- Center of Industrial & Retail development
- Adjacent to major companies
 - Cabelas
 - Walmart
 - SYSCO
 - Buck Knives
 - Tedder Industries
 - University of Idaho Workforce Training
- All utilities in street. Shovel ready

Offered at
\$1,765,000
(\$18.00 per SF)

Broker contact:

Steve Ridenour
+1 208 660 5010
sridenour@naiblack.com
KC Reese
+208 755 7629
kc.reese@naiblack.com



Strategic Post Falls Location at Idaho/Washington State Line

Broker contact:

Steve Ridenour

+1 208 660 5010

sridenour@naiblack.com



NO WARRANTY OR REPRESENTATION, EXPRESS OR IMPLIED, IS MADE AS TO THE ACCURACY OF THE INFORMATION CONTAINED HEREIN, AND THE SAME IS SUBMITTED SUBJECT TO ERRORS, OMISSIONS, CHANGE OF PRICE, RENTAL OR OTHER CONDITIONS, PRIOR SALE, LEASE OR FINANCING, OR WITHDRAWAL WITHOUT NOTICE, AND OF ANY SPECIAL LISTING CONDITIONS IMPOSED BY OUR PRINCIPALS. NO WARRANTIES OR REPRESENTATIONS ARE MADE AS TO THE CONDITION OF THE PROPERTY OR ANY HAZARDS CONTAINED THEREIN ARE ANY TO BE IMPLIED.

801 W. Riverside Ave 300
Spokane, WA 99201
+1 509 623 1000
naiblack.com