

For Sale

Multifamily

NAI Black



419 S Washington St, 425 S Washington St,  
320 W 5th Ave, and 324 W 5th Ave

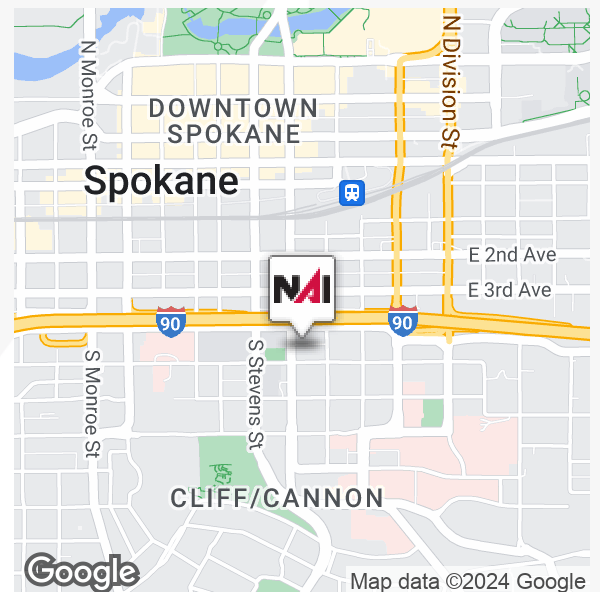
Spokane, Washington 99204

## Property Description

- AMAZING SOUTH HILL LOCATION
- 42 Units on Four Separate Parcels
- Newer Roofs on Two of the Buildings
- CLOSE TO DOWNTOWN AND IN THE HOSPITAL DISTRICT
- Intentionally Low Occupancy so that Rehab can Start Immediately
- 419 S Washington St: 6 Units - \$ 375,000
- 425 S Washington St: 17 Units - \$1,600,000
- 320 W 5th Ave: 7 Units - \$ 600,000
- 324 W 5th Ave: 12 Units - \$ 675,000
- All 1 Bedroom Units
- All Separately Metered for Electricity
- In Opportunity Zone!
- In City of Spokane Multifamily Tax Exemption Area!

SELLER IS A LICENSED REAL ESTATE BROKER IN WASHINGTON STATE

**Sale Price: \$3,250,000**



For more information

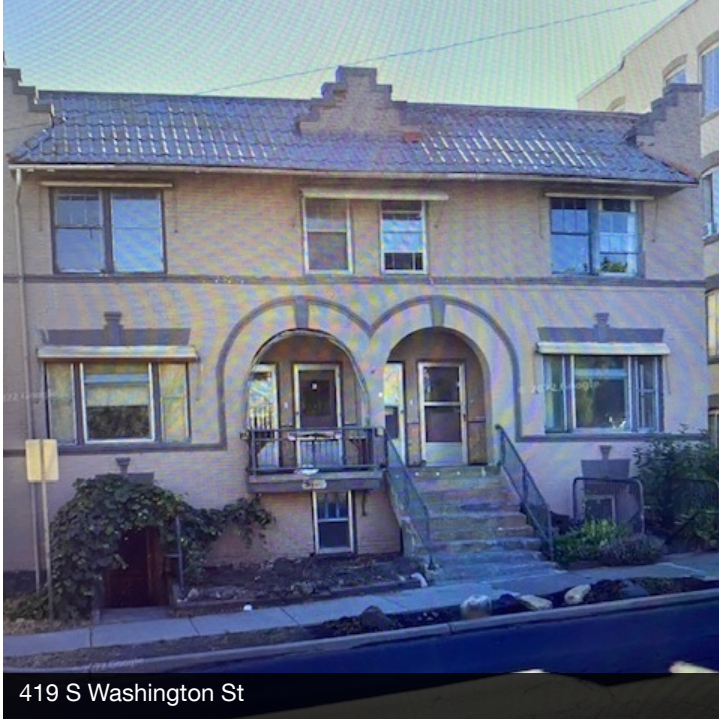
**Mitch Swenson, CCIM**

O: 509 622 3552

mswenson@naiblack.com

No warranty or representation, expression or implied, is made as to the accuracy of the information contained herein, and the same is submitted subject to errors, omissions, change or price, rental or other conditions, prior to sale, lease, financing, or withdrawal without notice, and of special listing conditions imposed by our principals no warranties or representations are made as to the condition of the property or any hazards contained therein or any to be implied.

801 W. Riverside Avenue, Suite 300  
Spokane, WA 99201  
509 623 1000 tel  
naiblack.com



419 S Washington St



425 S Washington St



320 W 5th Ave



324 W 5th Ave

For Sale

Multifamily

NAI Black



Newly Rehabbed Unit



Newly Rehabbed Unit



Newly Rehabbed Unit

No warranty or representation, expression or implied, is made as to the accuracy of the information contained herein, and the same is submitted subject to errors, omissions, change or price, rental or other conditions, prior to sale, lease, financing, or withdrawal without notice, and of special listing conditions imposed by our principals no warranties or representations are made as to the condition of the property or any hazards contained therein or any to be implied.

801 W. Riverside Avenue, Suite 300  
Spokane, WA 99201  
509 623 1000 tel  
[naiblack.com](http://naiblack.com)

For Sale

# Multifamily



Map data ©2024 Google Imagery ©2024 Airbus, CNES / Airbus, Maxar Technologies, U.S. Geological Survey, USDA/FPAC/GEOS

No warranty or representation, expression or implied, is made as to the accuracy of the information contained herein, and the same is submitted subject to errors, omissions, change or price, rental or other conditions, prior to sale, lease, financing, or withdrawal without notice, and of special listing conditions imposed by our principals no warranties or representations are made as to the condition of the property or any hazards contained therein or any to be implied.

801 W. Riverside Avenue, Suite 300  
Spokane, WA 99201  
509 623 1000 tel  
[naiblack.com](http://naiblack.com)

For Sale

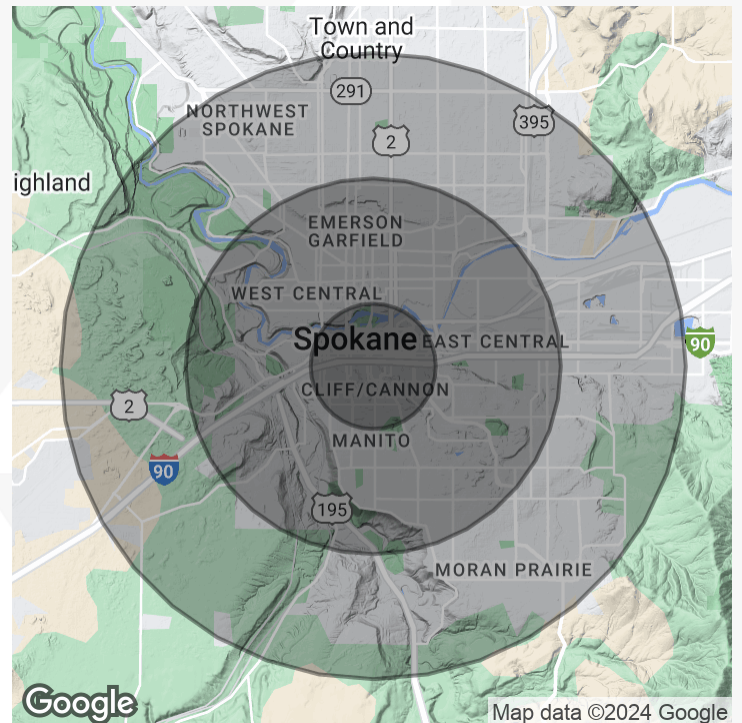
# Multifamily



Population	1 Mile	3 Miles	5 Miles
Total Population	15,885	110,599	226,427
Average Age	41.2	37.8	38.1
Average Age (Male)	40.2	37.4	37.1
Average Age (Female)	41.1	39.8	39.1

Households & Income	1 Mile	3 Miles	5 Miles
Total Households	8,734	47,471	94,653
# of Persons per HH	1.61	2.18	2.31
Average HH Income	\$66,075	\$80,567	\$84,148
Average House Value	\$189,526	\$208,808	\$203,975

\* Demographic data derived from Esri forecast for 2023



No warranty or representation, expression or implied, is made as to the accuracy of the information contained herein, and the same is submitted subject to errors, omissions, change or price, rental or other conditions, prior to sale, lease, financing, or withdrawal without notice, and of special listing conditions imposed by our principals no warranties or representations are made as to the condition of the property or any hazards contained therein or any to be implied.

801 W. Riverside Avenue, Suite 300  
Spokane, WA 99201  
509 623 1000 tel  
[naiblack.com](http://naiblack.com)