

For Lease

Auto Service Center

NAI Black



15315 N Newport Hwy

Mead, Washington 99021

Property Description

Space Available: 3,960± SF

Land Size: 49,257± SF

Zoned Regional Commercial

3-Bay Auto Shop

Electric Heat in Office

Gas Forced-Air and Waste-Oil Heat in Shop

Parcel ID #: 37341.0181 & 37341.0182

Lease Rate: \$3,200.00 per month (NNN)



For more information

Drew Ulrick, SIOR

O: 509 622 3562

dulrick@naiblack.com

No warranty or representation, expression or implied, is made as to the accuracy of the information contained herein, and the same is submitted subject to errors, omissions, change or price, rental or other conditions, prior to sale, lease, financing, or withdrawal without notice, and of special listing conditions imposed by our principals no warranties or representations are made as to the condition of the property or any hazards contained therein or any to be implied.

801 W. Riverside Avenue, Suite 300

Spokane, WA 99201

509 623 1000 tel

naiblack.com

For Lease

Auto Service Center

NAI Black



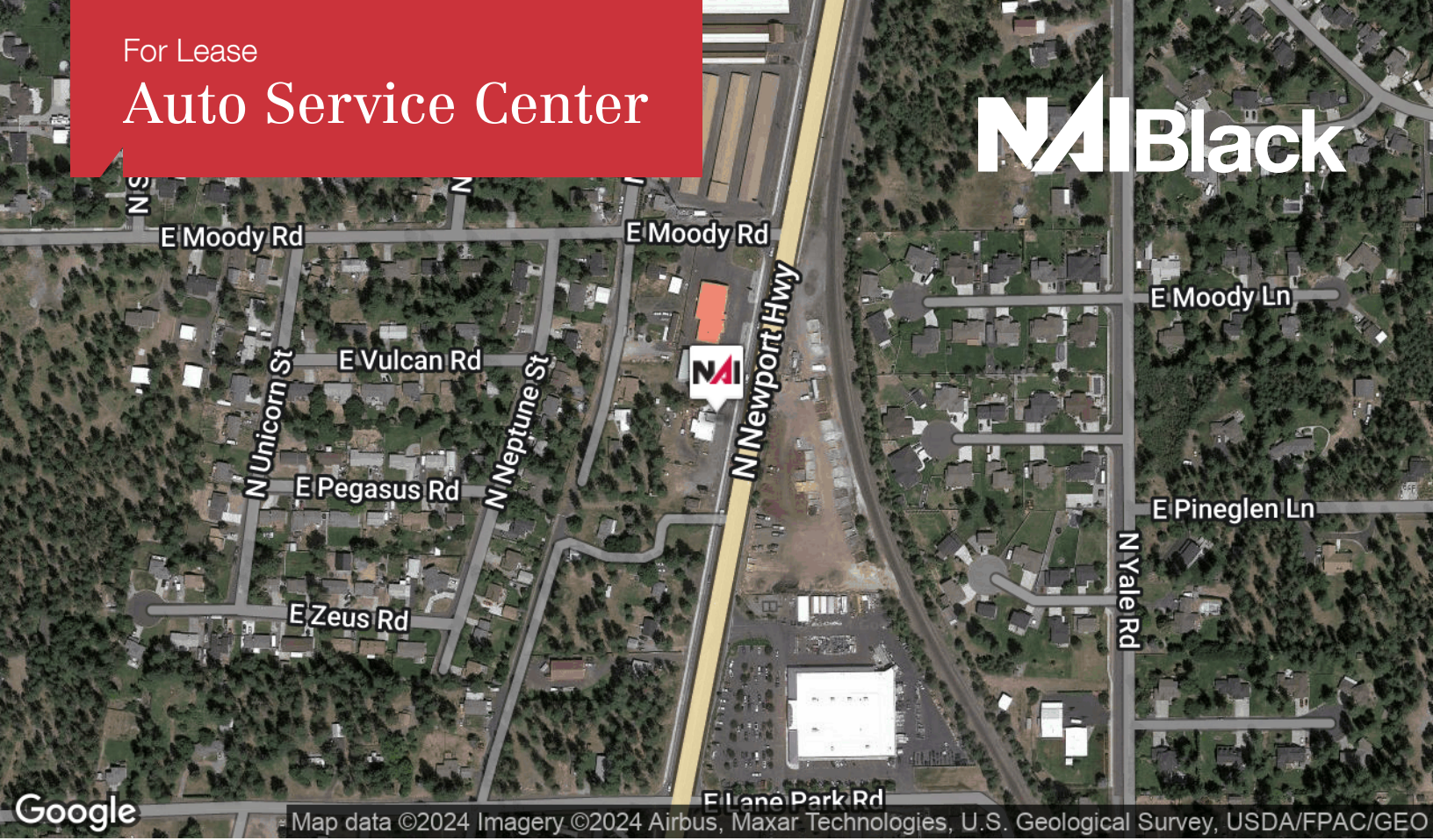
No warranty or representation, expression or implied, is made as to the accuracy of the information contained herein, and the same is submitted subject to errors, omissions, change or price, rental or other conditions, prior to sale, lease, financing, or withdrawal without notice, and of special listing conditions imposed by our principals no warranties or representations are made as to the condition of the property or any hazards contained therein or any to be implied.

801 W. Riverside Avenue, Suite 300
Spokane, WA 99201
509 623 1000 tel
naiblack.com

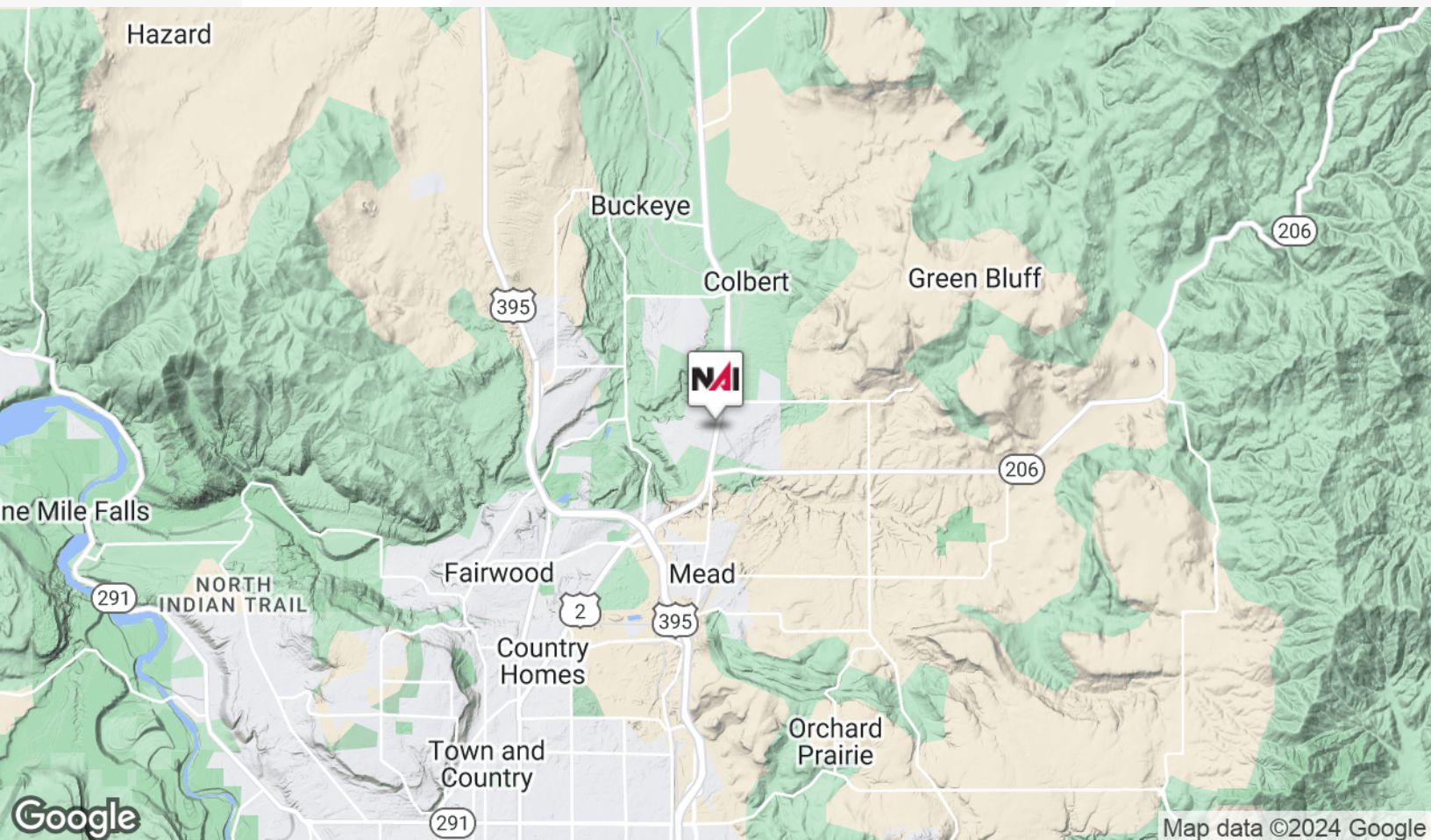
For Lease

Auto Service Center

NAI Black



Map data ©2024 Imagery ©2024 Airbus, Maxar Technologies, U.S. Geological Survey, USDA/FPAC/GEO



Map data ©2024 Google

No warranty or representation, expression or implied, is made as to the accuracy of the information contained herein, and the same is submitted subject to errors, omissions, change or price, rental or other conditions, prior to sale, lease, financing, or withdrawal without notice, and of special listing conditions imposed by our principals no warranties or representations are made as to the condition of the property or any hazards contained therein or any to be implied.

801 W. Riverside Avenue, Suite 300
Spokane, WA 99201
509 623 1000 tel
naiblack.com

For Lease

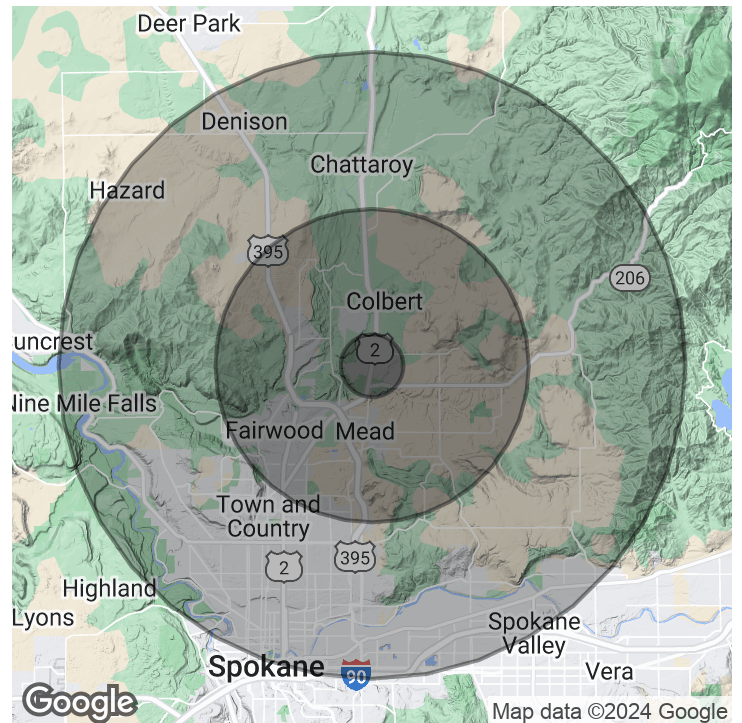
Auto Service Center



Population	1 Mile	5 Miles	10 Miles
Total Population	2,724	43,734	237,462
Average Age	42.6	40.9	38.8
Average Age (Male)	38.6	38.8	37.4
Average Age (Female)	44.1	40.8	39.7

Households & Income	1 Mile	5 Miles	10 Miles
Total Households	1,055	17,089	99,888
# of Persons per HH	2.6	2.6	2.4
Average HH Income	\$79,166	\$88,421	\$69,685
Average House Value	\$226,849	\$281,726	\$214,977

* Demographic data derived from 2020 ACS - US Census



No warranty or representation, expression or implied, is made as to the accuracy of the information contained herein, and the same is submitted subject to errors, omissions, change or price, rental or other conditions, prior to sale, lease, financing, or withdrawal without notice, and of special listing conditions imposed by our principals no warranties or representations are made as to the condition of the property or any hazards contained therein or any to be implied.

801 W. Riverside Avenue, Suite 300
 Spokane, WA 99201
 509 623 1000 tel
naiblack.com