

For Lease  
**Office**

**NAI**Black



## 1213 S. Pines Rd., Ste. B

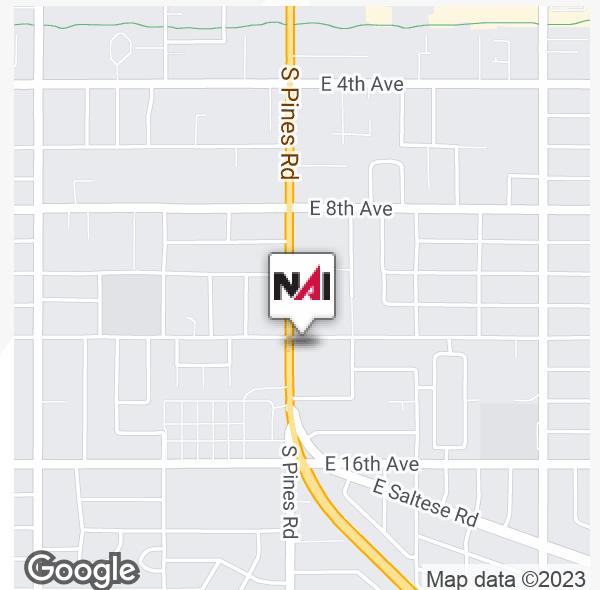
Spokane Valley, Washington 99206

### Property Highlights

- Available Space: 1,058 SF +/-
- Ample Parking
- Traffic Count: Est. 13,000 VPD
- Excellent Valley Location on the Corner of S. Pines Rd. & E. 12th Ave.

### Demographics

|                   | 1 Mile   | 3 Miles  | 5 Miles  |
|-------------------|----------|----------|----------|
| Total Households  | 4,882    | 30,766   | 49,495   |
| Total Population  | 12,261   | 76,229   | 124,450  |
| Average HH Income | \$73,735 | \$74,090 | \$78,437 |



**Lease Rate: \$1,100.00 per month (Plus Utilities)**

For more information

**Don Jamieson**

O: 509 622 3584

djamieson@naiblack.com

No warranty or representation, expression or implied, is made as to the accuracy of the information contained herein, and the same is submitted subject to errors, omissions, change or price, rental or other conditions, prior to sale, lease, financing, or withdrawal without notice, and of special listing conditions imposed by our principals no warranties or representations are made as to the condition of the property or any hazards contained therein or any to be implied.

801 W. Riverside Avenue, Suite 300  
Spokane, WA 99201  
509 623 1000 tel  
[naiblack.com](http://naiblack.com)

For Lease  
**Office**

Millwood

Spokane Valley

**NAI**Black

Dishman

OPPORTUNITY

VERADALE

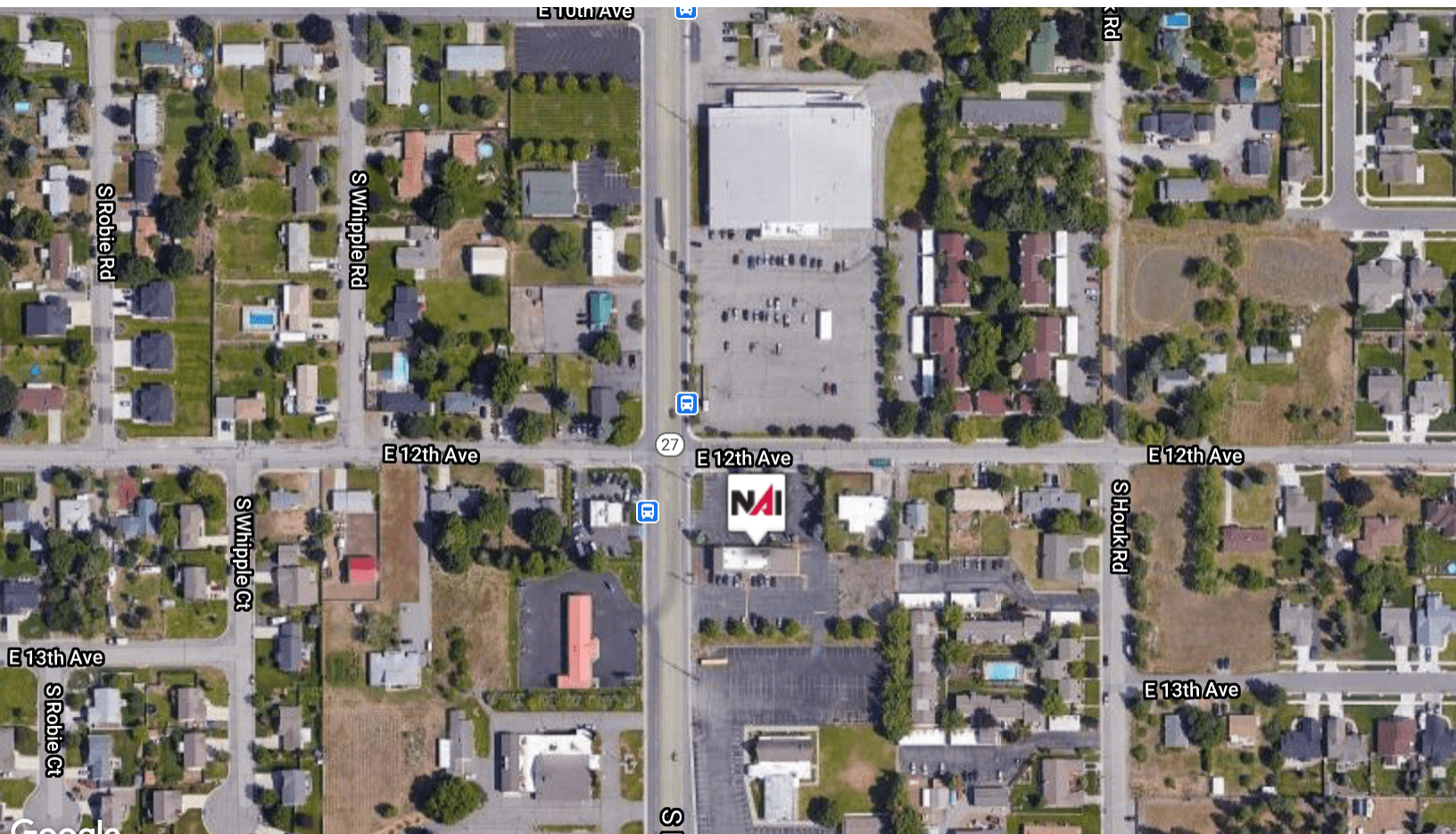
Vera



CHESTER

Map data ©2023

Google



Google

Map data © 2021 Imagery ©2021 , CNES / Airbus, Maxar Technologies, U.S. Geological Survey, USDA Farm Service Agency

No warranty or representation, expression or implied, is made as to the accuracy of the information contained herein, and the same is submitted subject to errors, omissions, change or price, rental or other conditions, prior to sale, lease, financing, or withdrawal without notice, and of special listing conditions imposed by our principals no warranties or representations are made as to the condition of the property or any hazards contained therein or any to be implied.

801 W. Riverside Avenue, Suite 300  
Spokane, WA 99201  
509 623 1000 tel  
[naiblack.com](http://naiblack.com)