

For Lease

Retail/Office

NAI Black



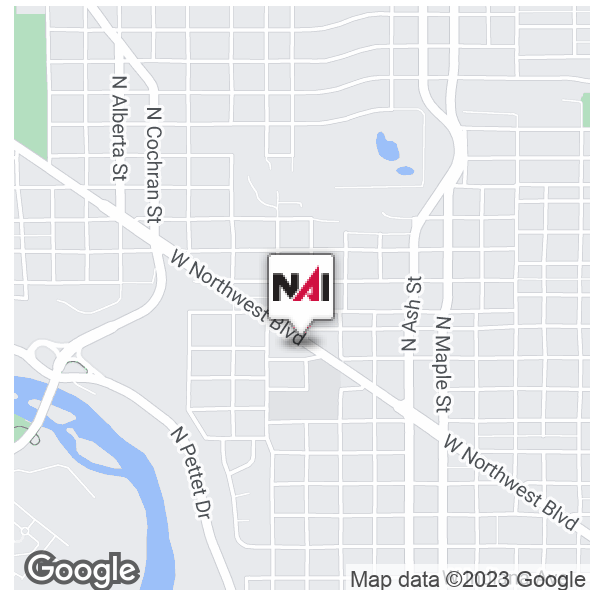
2003 W. Northwest Blvd.

Spokane, Washington 99205

Property Highlights

- Unique Retail Building on Northwest Blvd.
- Zoned CB-55
- Retail Space: 1,661 SF +/-
- Excellent Location for Hair Salon or Other High Traffic Retail Use
- Plenty of On-Site and Street Parking Adjacent to Premises
- Traffic Count: 32,600 +/- VPD
- Owner is a Licensed Real Estate Broker in the State of Washington

Lease Rate: \$1,000.00 per month (MG)



For more information

Don Jamieson

O: 509 622 3584

djamieson@naiblack.com

No warranty or representation, expression or implied, is made as to the accuracy of the information contained herein, and the same is submitted subject to errors, omissions, change or price, rental or other conditions, prior to sale, lease, financing, or withdrawal without notice, and of special listing conditions imposed by our principals no warranties or representations are made as to the condition of the property or any hazards contained therein or any to be implied.

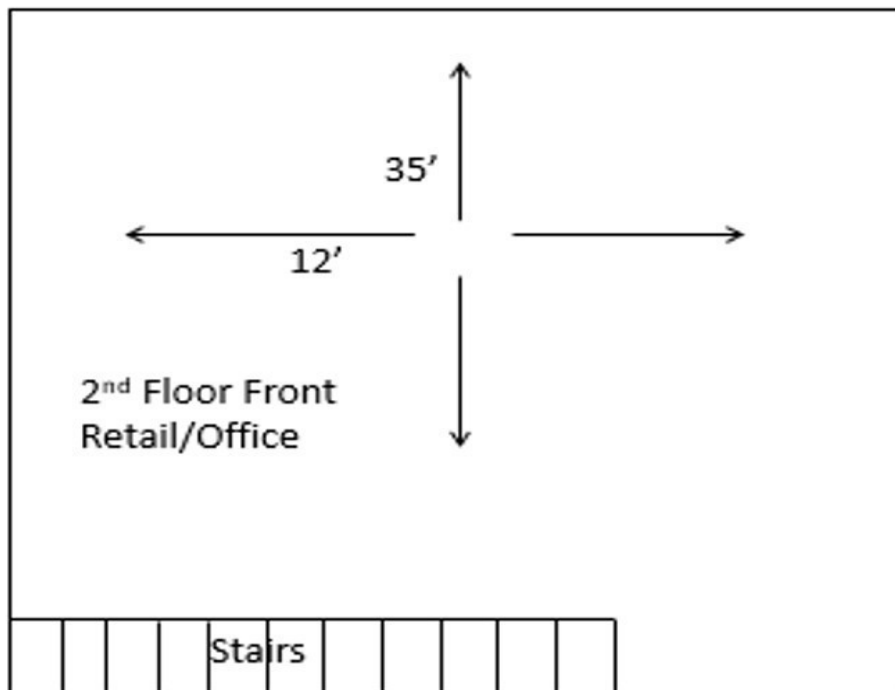
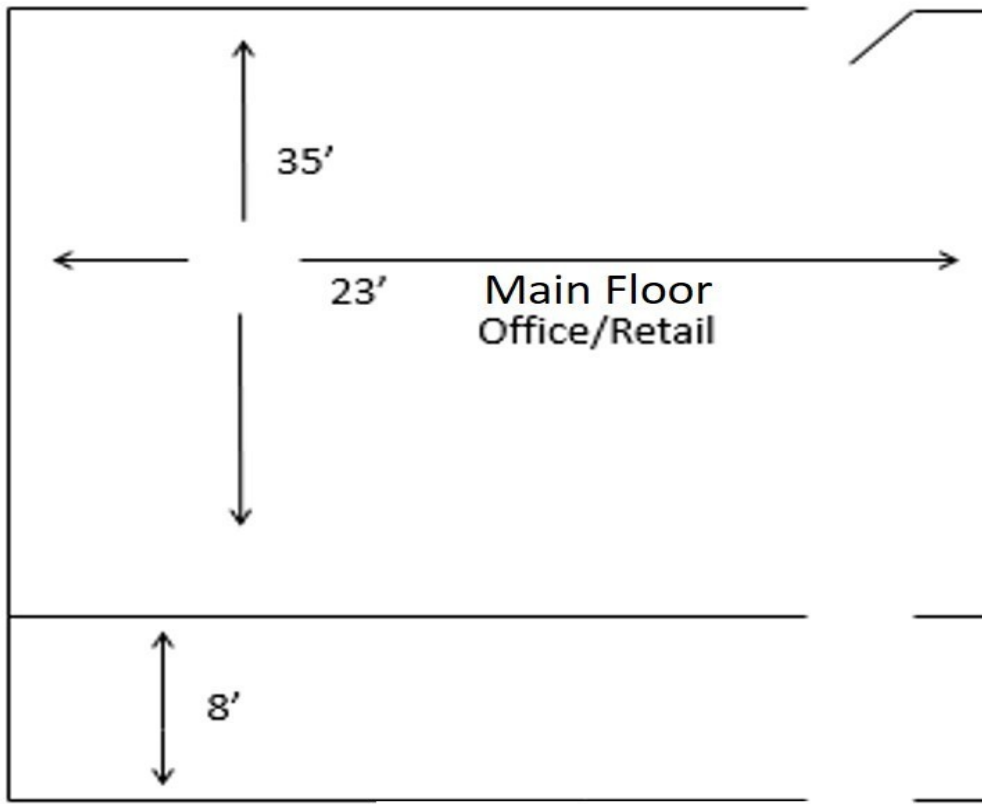
801 W. Riverside Avenue, Suite 300
Spokane, WA 99201
509 623 1000 tel
naiblack.com

For Lease

Retail/Office



2003 W. Northwest Blvd. - Floor Plan



No warranty or representation, expression or implied, is made as to the accuracy of the information contained herein, and the same is submitted subject to errors, omissions, change or price, rental or other conditions, prior to sale, lease, financing, or withdrawal without notice, and of special listing conditions imposed by our principals no warranties or representations are made as to the condition of the property or any hazards contained therein or any to be implied.

801 W. Riverside Avenue, Suite 300
Spokane, WA 99201
509 623 1000 tel
naiblack.com

For Lease
Retail/Office

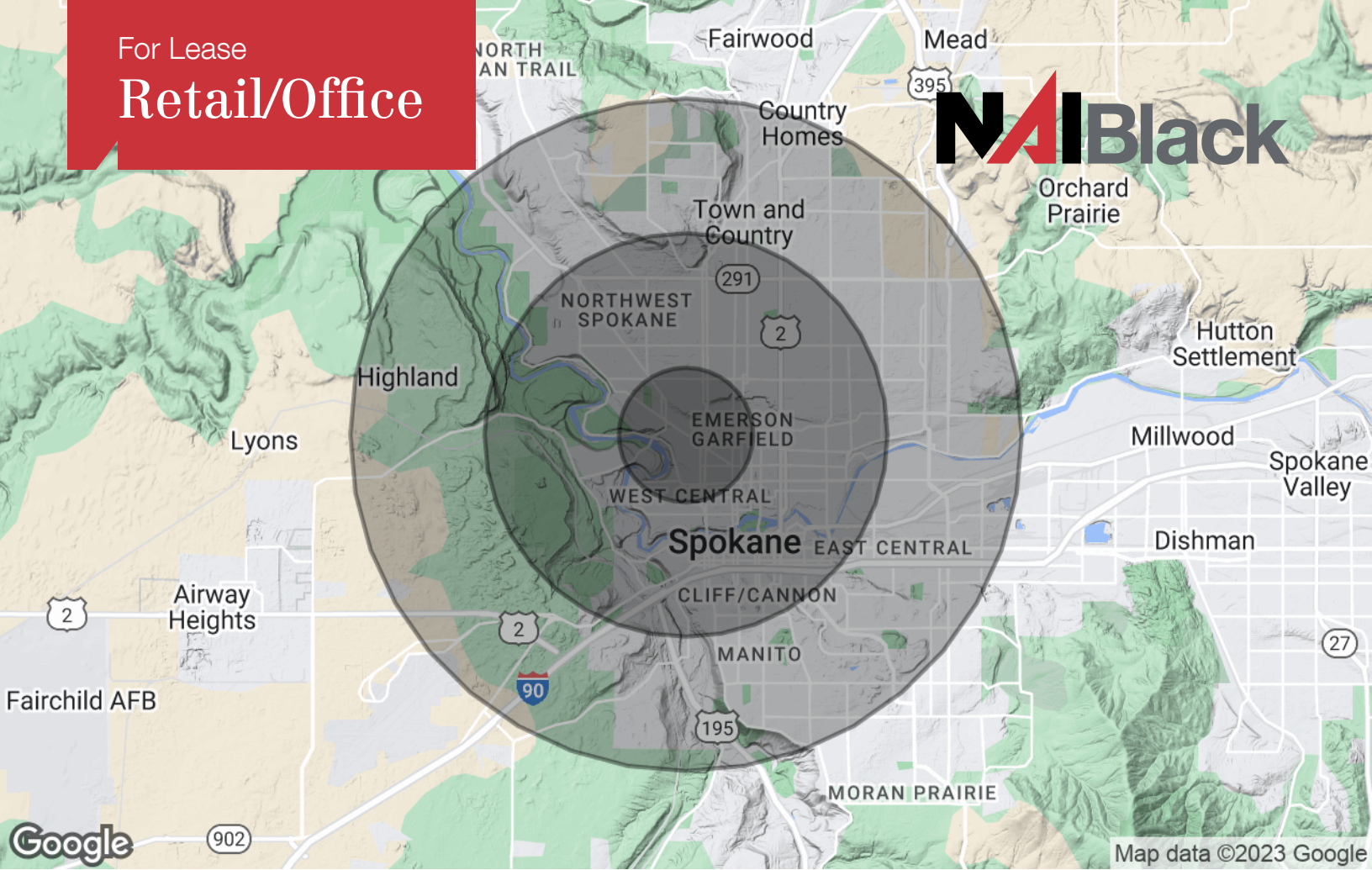
NAIBlack



801 W. Riverside Avenue, Suite 300
Spokane, WA 99201
509 623 1000 tel
naiblack.com

No warranty or representation, expression or implied, is made as to the accuracy of the information contained herein, and the same is submitted subject to errors, omissions, change or price, rental or other conditions, prior to sale, lease, financing, or withdrawal without notice, and of special listing conditions imposed by our principals no warranties or representations are made as to the condition of the property or any hazards contained therein or any to be implied.

For Lease
Retail/Office



Population

	1 Mile	3 Miles	5 Miles
TOTAL POPULATION	17,011	114,278	221,578
MEDIAN AGE	36.7	36.5	37.1
MEDIAN AGE (MALE)	36.7	36.3	37.0
MEDIAN AGE (FEMALE)	39.9	37.2	39.1

Households & Income

	1 Mile	3 Miles	5 Miles
TOTAL HOUSEHOLDS	7,021	47,990	91,376
# OF PERSONS PER HH	2.39	2.25	2.34
AVERAGE HH INCOME	\$73,124	\$69,749	\$79,584

* Demographic data derived from Esri forecast for 2022

No warranty or representation, expression or implied, is made as to the accuracy of the information contained herein, and the same is submitted subject to errors, omissions, change or price, rental or other conditions, prior to sale, lease, financing, or withdrawal without notice, and of special listing conditions imposed by our principals no warranties or representations are made as to the condition of the property or any hazards contained therein or any to be implied.

801 W. Riverside Avenue, Suite 300
 Spokane, WA 99201
 509 623 1000 tel
naiblack.com