

For Lease
Retail

NAIBlack



Google

2323 N Ash Street

Spokane, Washington 99205

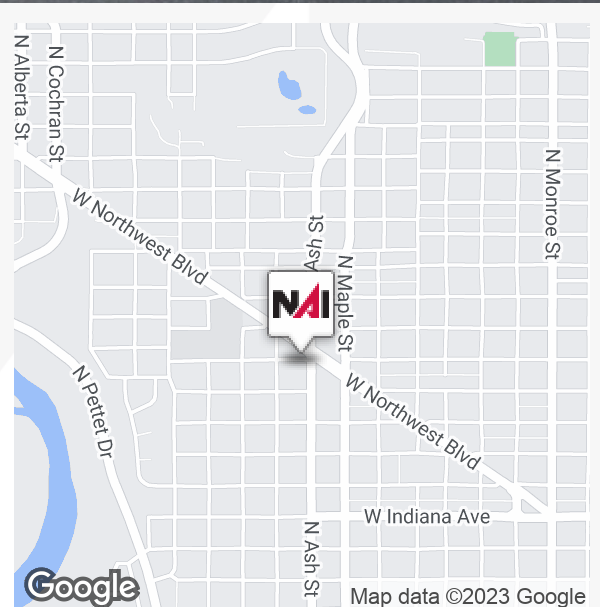
Property Description

Suite A Available: 1,045 SF ±

Lot Size: 12,586 SF ± (0.29 Acres ±)

On-Site Surface Parking

Pylon Signage Available



Lease Rate: \$1,400/mo (NNN)

For more information

Chris Bell, SIOR

O: 509 622 3538

cbell@naiblack.com

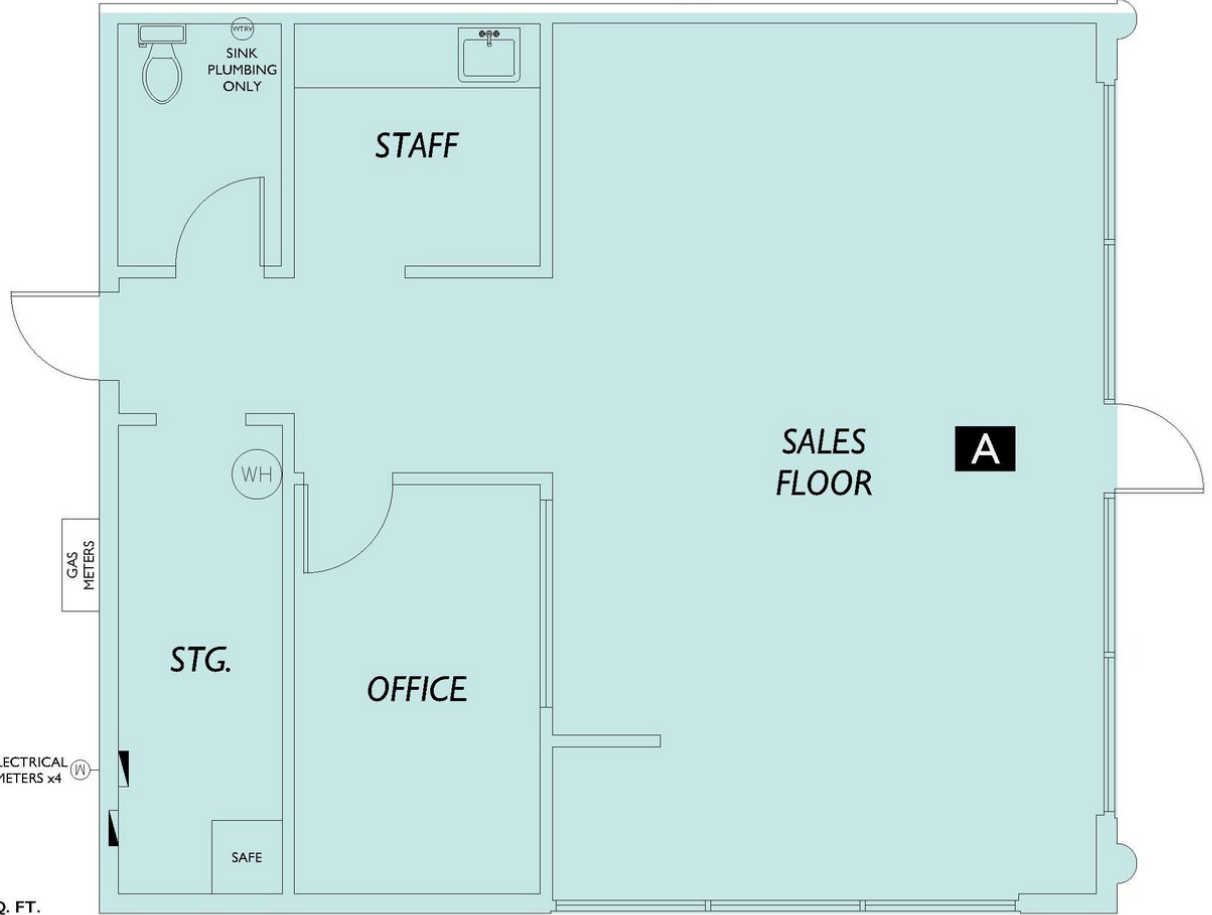
No warranty or representation, expression or implied, is made as to the accuracy of the information contained herein, and the same is submitted subject to errors, omissions, change or price, rental or other conditions, prior to sale, lease, financing, or withdrawal without notice, and of special listing conditions imposed by our principals no warranties or representations are made as to the condition of the property or any hazards contained therein or any to be implied.

801 W. Riverside Avenue, Suite 300
Spokane, WA 99201
509 623 1000 tel
naiblack.com

West Northwest Boulevard
Neighboring Commercial Buildings
West Carlisle Avenue
Adjacent Retail Suites

ASSUMED WALL THICKNESS (TYP.)

North Oak Street
Neighboring Residential Buildings



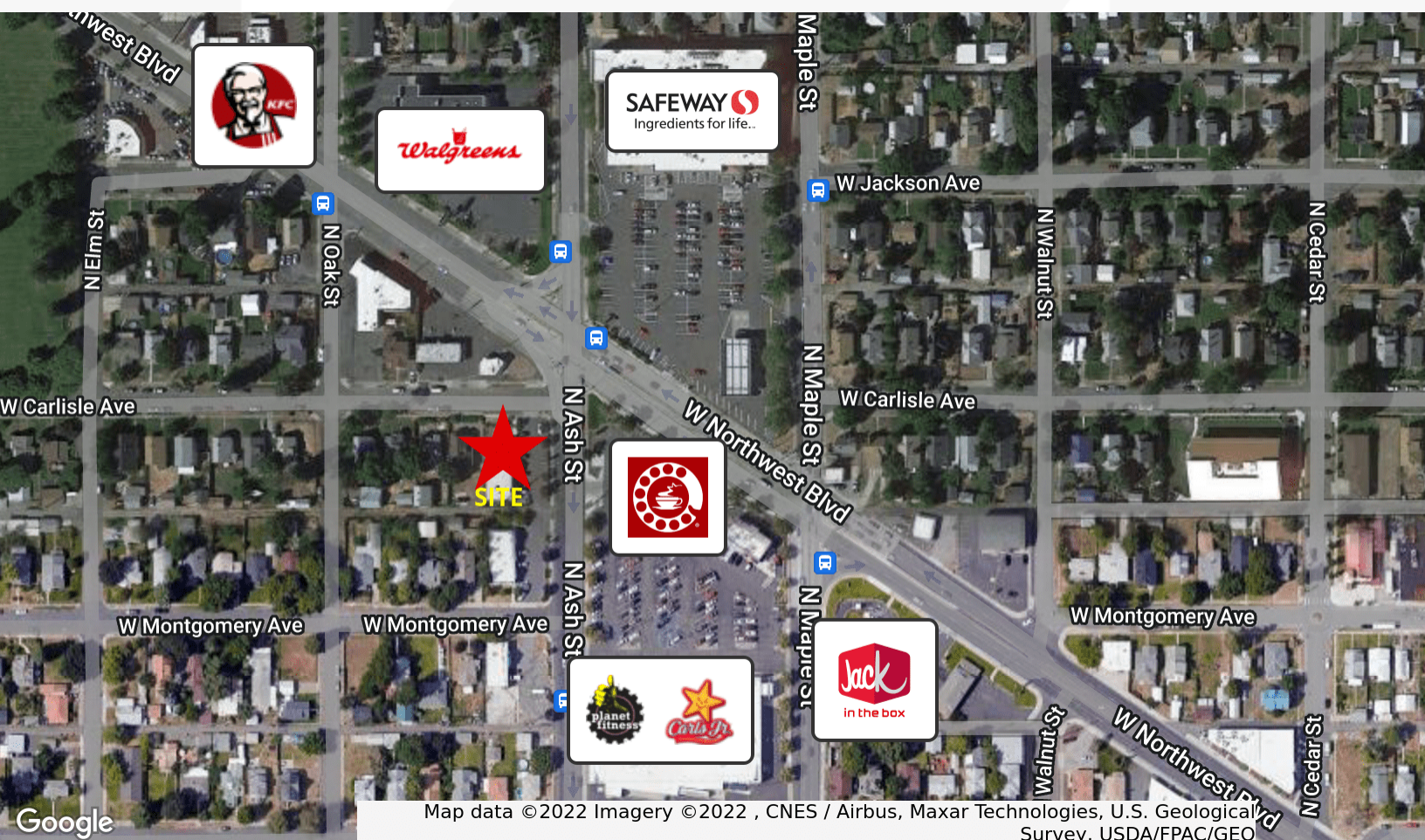
Floor Summary	SQ. FT.
Total Gross Leasable Area	1,045.12
Total GLA Exclusions	0

Structured Parking	0
Limited Common Area	0
Service & Public Areas	0
Total Vertical	0

Suite #	Occupant GLA
Suite A	1,045.12

Alleyway
Neighboring Retail Building
West Montgomery Avenue

For Lease
Retail



Map data ©2022 Imagery ©2022 , CNES / Airbus, Maxar Technologies, U.S. Geological Survey, USDA/FPAC/GEO

801 W. Riverside Avenue, Suite 300
Spokane, WA 99201
509 623 1000 tel
naiblack.com

No warranty or representation, expression or implied, is made as to the accuracy of the information contained herein, and the same is submitted subject to errors, omissions, change or price, rental or other conditions, prior to sale, lease, financing, or withdrawal without notice, and of special listing conditions imposed by our principals no warranties or representations are made as to the condition of the property or any hazards contained therein or any to be implied.