



**FOR  
LEASE**

**RITTIMAN WEST INDUSTRIAL PARK - BLDG 7**  
5700 - 5730 RITTIMAN PLAZA, SAN ANTONIO, TX 78218

**TOTAL BUILDING SIZE:** 72,000 sf

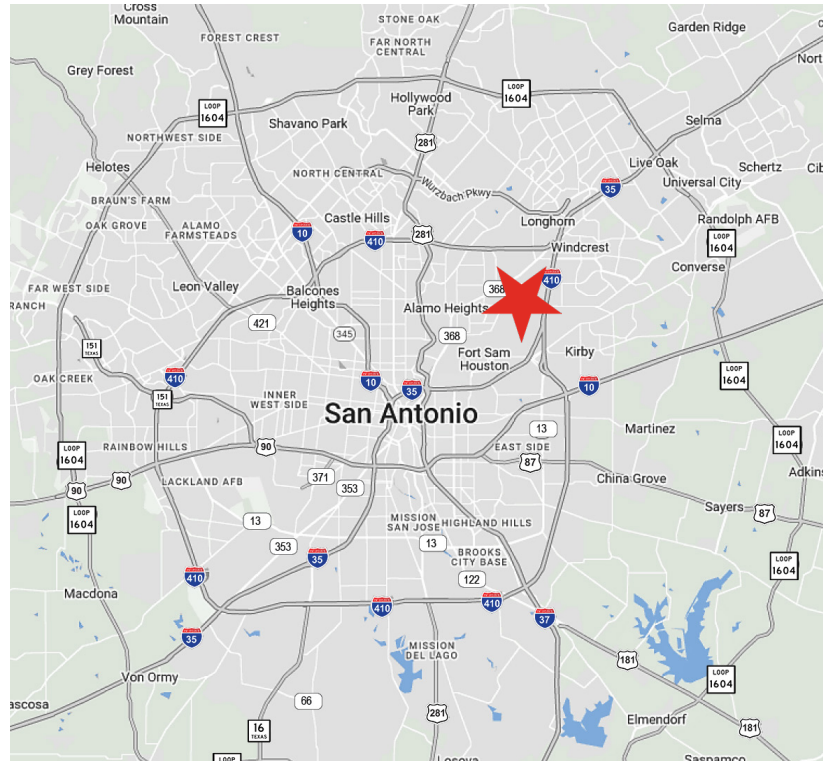
**AVAILABILITY:** Suite 5714 - 6,750

**ASKING RATE:** Call for Pricing

**DOCKS:** 2 Dock High Doors  
3 Grade-Level Doors

**COLUMN SPACING:** 42' X 36'

**CLEAR HEIGHT:** 19'



The information contained herein is believed to be accurate but is not warranted, as the information may change or be updated without notice. Seller or Landlord makes no representation as to the environmental condition of the property and recommends purchaser's or tenant's independent investigation.

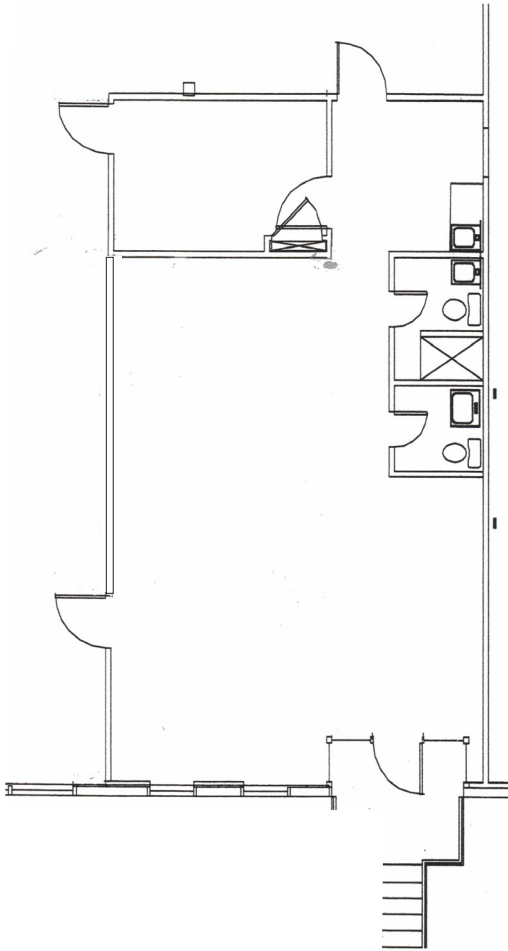


9311 San Pedro Ave., Ste. 850  
San Antonio, TX 78216  
210.366.2222 office  
www.endurasa.com

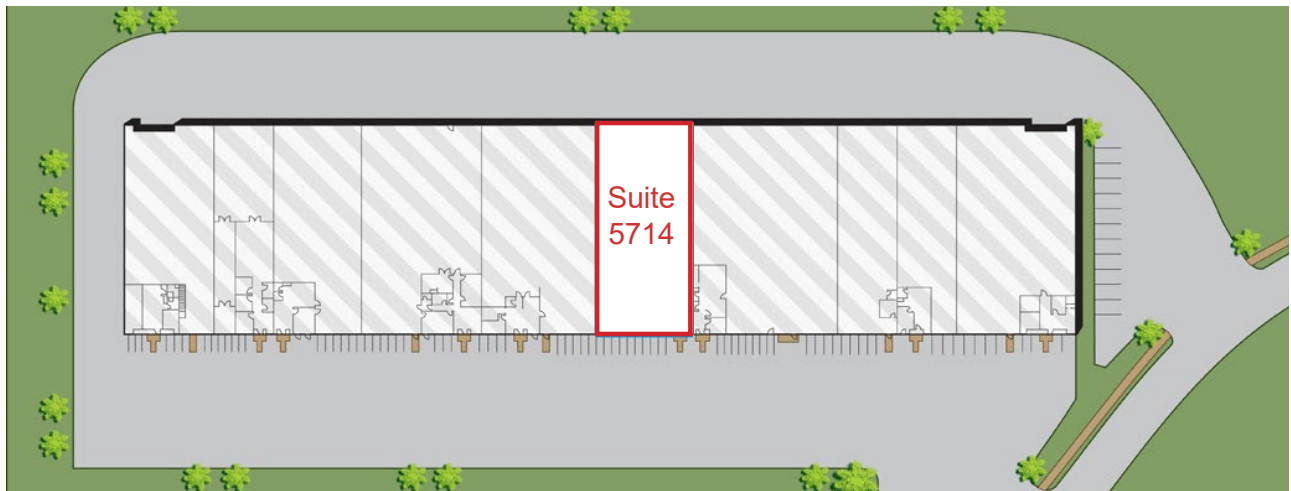
**CHARLIE HARGIS**  
210.918.6388 direct  
210.286.4536 mobile  
chargis@endurasa.com

**FOR  
LEASE**

**RITTIMAN WEST INDUSTRIAL PARK - BLDG 7**  
5700 - 5730 RITTIMAN PLAZA, SAN ANTONIO, TX 78218



AVAILABLE SPACE	
SUITES	SF
5714	6,750



The information contained herein is believed to be accurate but is not warranted, as the information may change or be updated without notice. Seller or Landlord makes no representation as to the environmental condition of the property and recommends purchaser's or tenant's independent investigation.

4.1.24

**FOR  
LEASE**

**RITTIMAN WEST INDUSTRIAL PARK - BLDG 7**  
5700 - 5730 RITTIMAN PLAZA, SAN ANTONIO, TX 78218



The information contained herein is believed to be accurate but is not warranted, as the information may change or be updated without notice. Seller or Landlord makes no representation as to the environmental condition of the property and recommends purchaser's or tenant's independent investigation.



9311 San Pedro Ave., Ste. 850  
San Antonio, TX 78216  
210.366.2222 office  
www.endurasa.com

**CHARLIE HARGIS**  
210.918.6388 direct  
210.286.4536 mobile  
chargis@endurasa.com

