



6300 S Old Village Pl, Suite 201 Sioux Falls, SD 57108

Lease Rate	\$19.50/SF NNN
NNN Expenses	\$10.72/SF
Suite Size	4,223 SF

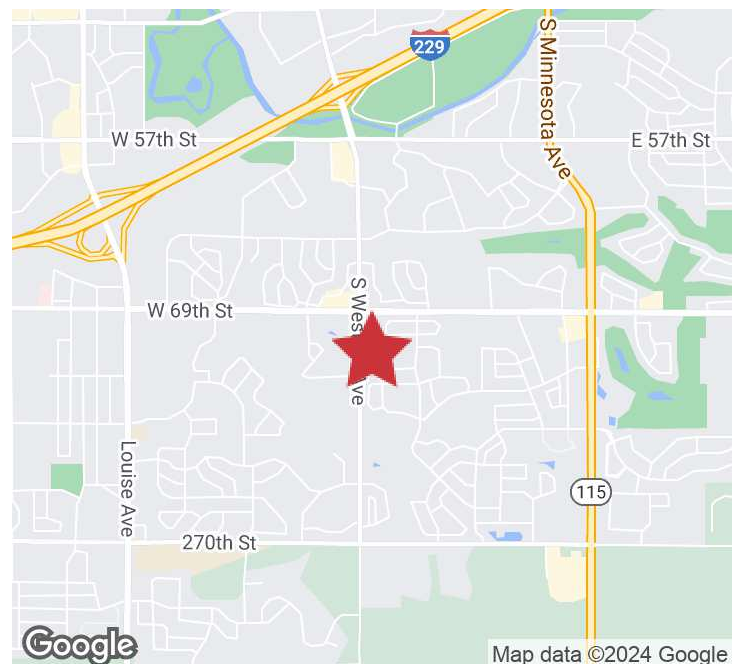
PROPERTY HIGHLIGHTS

- Available November 1, 2024
- Prime lease expires March 31, 2026
- 8 windowed offices and 2 interior offices
- 5 work stations, work room, break room, conference room
- Vaulted ceiling in open work area
- Building signage available
- Includes 6 reserved parking garage spaces

LOCATION DESCRIPTION

Located just south of the 69th Street and Western Avenue intersection

Area neighbors include McNally's Irish Pub, Charlie's Pizza, JMISKO Surgical Design, ELO CPAs & Advisors



GREGG BROWN, MBA, SIOR
Chief Operating Officer, SVP
gbrown@naisiouxfalls.com
605.906.0394

2500 W. 49th St. Suite 100
Sioux Falls, SD 57105
605.357.7100
naisiouxfalls.com

FLOOR PLAN

6300 S OLD VILLAGE PL, SUITE 201
Sioux Falls, SD 57108

FOR SUBLEASE

Office Suite

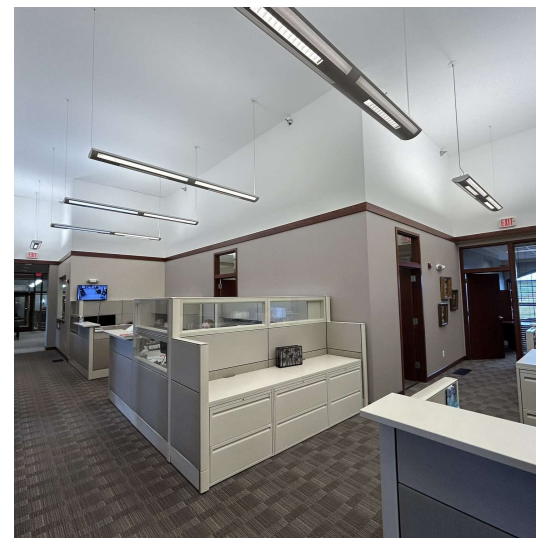
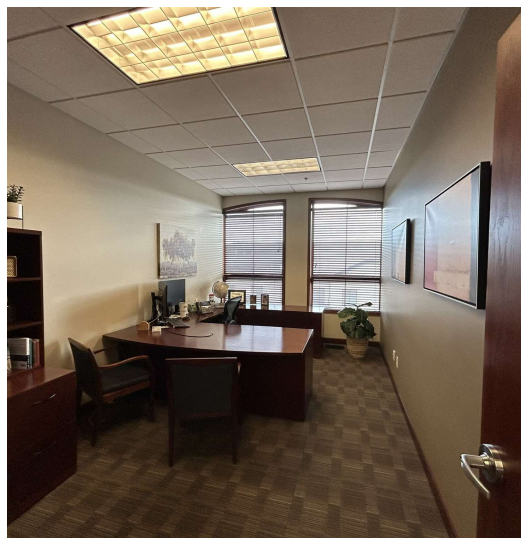


PHOTOS

6300 S OLD VILLAGE PL, SUITE 201
Sioux Falls, SD 57108

FOR SUBLEASE

Office Suite

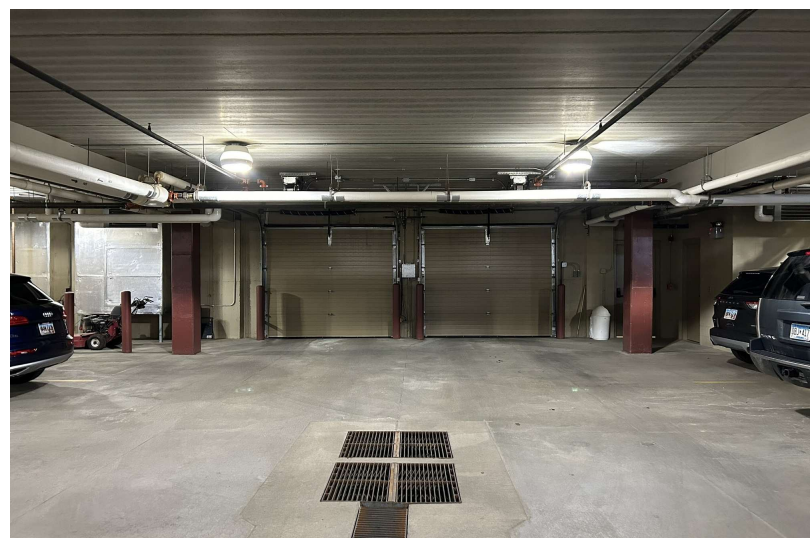
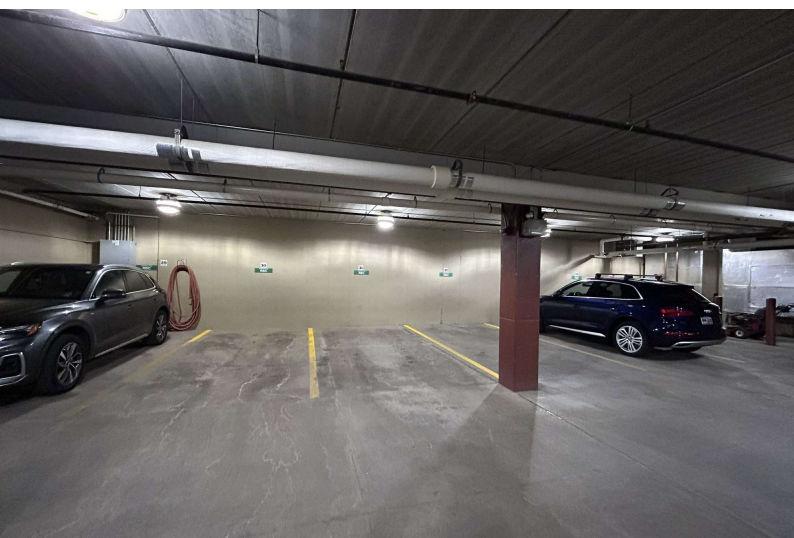


PHOTOS

6300 S OLD VILLAGE PL, SUITE 201
Sioux Falls, SD 57108

FOR SUBLEASE

Office Suite



AERIAL

6300 S OLD VILLAGE PL, SUITE 201
Sioux Falls, SD 57108

FOR SUBLEASE

Office Suite



Google

Map data ©2024 Imagery ©2024 Airbus, CNES / Airbus, Maxar Technologies, USDA/FPAC/GEO