



**+/- 12 AC Of Prime Development Land Desirably Located Just South Of Intersection Of Highway 242 & FM 1314.**

**Beau Harris / 936-523-0483 / 936-441-2610 / [Beau@BlackLabelCommercial.com](mailto:Beau@BlackLabelCommercial.com) - Hunter Spielman / 817-233-6663 / [HSpielman@BlackLabelCommercial.com](mailto:HSpielman@BlackLabelCommercial.com)**

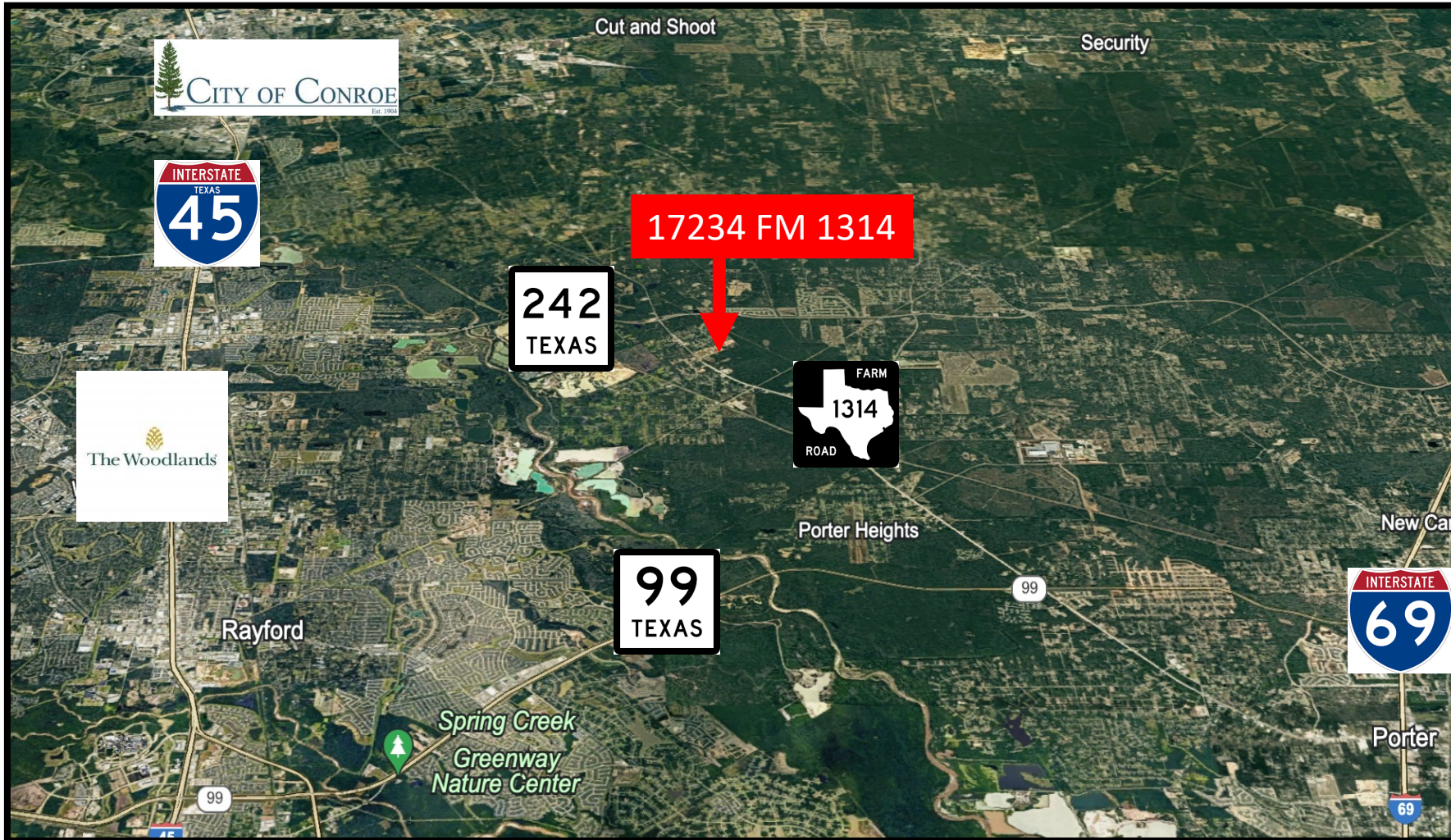
This information has been obtained from sources believed reliable. We have not verified it and make no guarantee, warranty or representation about it. Any projections, opinions, assumptions, or estimates used are for example only.



## **Property Overview**

- +/- 12 AC Tract Currently Available
- Additional Land Available
- Unrestricted Land
- Located In An Opportunity Zone
- Located Out Of Both Flood Zones
- +/- 630 Feet Of Frontage Along FM 1314
- BTS Options Available

**PLEASE CONTACT BROKER FOR PRICING**



PLEASE CONTACT BROKER  
FOR ADDITIONAL  
INFORMATION ON PRICING  
AND DEVELOPMENT  
OPTIONS

Beau Harris

[Beau@BlackLabelCommercial.com](mailto:Beau@BlackLabelCommercial.com)

Hunter Spielman

[HSpielman@BlackLabelCommercial.com](mailto:HSpielman@BlackLabelCommercial.com)

Harrison Walz

[Harrison@BlackLabelCommercial.com](mailto:Harrison@BlackLabelCommercial.com)

Beau Harris / 936-523-0483 / 936-441-2610 / [Beau@BlackLabelCommercial.com](mailto:Beau@BlackLabelCommercial.com) - Hunter Spielman / 817-233-6663 / [HSpielman@BlackLabelCommercial.com](mailto:HSpielman@BlackLabelCommercial.com)

This information has been obtained from sources believed reliable. We have not verified it and make no guarantee, warranty or representation about it. Any projections, opinions, assumptions, or estimates used are for example only.



