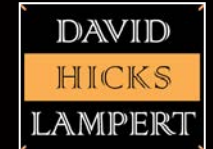


MEAD PLACE

NWC HIGHWAY 66 & COUNTY ROAD 7 - MEAD, CO



PROJECT DESCRIPTION

David, Hicks, & Lampert is pleased to announce a new mixed-use development at the NWC of Hwy 66 and County Road 7 in Mead, CO. Consisting of 115 acres, Mead Place will offer a vast array of allowed commercial and residential uses under the existing zoning. This rapidly growing trade area is located just west of the I-25 & Hwy 66 interchange, with over 160,000 vehicles per day. Come join our exciting new development.

DEMOGRAPHICS

	3 MILE
Population	6,897
Average HH Income	\$96,325
Businesses	368
Employees	3,771
.....	
	5 MILE
Population	41,376
Average HH Income	\$103,900
Businesses	1,389
Employees	11,215
.....	
	7 MILE
Population	92,154
Average HH Income	\$100,336
Businesses	3,682
Employees	26,861

Source: Applied Geographic Solutions, 2023 Estimates



PHILIP HICKS
303.694.6082
phil@dhlb.com

MIKE BRUNETTI
303.577.9982
mike.brunetti@dhlb.com

PETER THORNE
303.577.9972
peter.thorne@dhlb.com



MEAD PLACE

NWC HIGHWAY 66 & COUNTY ROAD 7 - MEAD, CO

DAVID
HICKS
LAMPERT

TRAFFIC COUNTS

On I-25 north of Highway 66	96,278 Cars/day
On I-25 south of Highway 66	104,891 Cars/day
On Highway 66 west of I-25	12,560 Cars/day
On Highway 66 east of I-25	10,079 Cars/day

Source: CDOT 2023



PHILIP HICKS
303.694.6082
phil@dhlb.com

MIKE BRUNETTI
303.577.9982
mike.brunetti@dhlb.com

PETER THORNE
303.577.9972
peter.thorne@dhlb.com



The information contained herein was obtained from sources deemed reliable. David, Hicks and Lampert Brokerage, LLC makes no warrant and assume no liabilities whatsoever for the accuracy or use of this data.

MEAD PLACE

NWC HIGHWAY 66 & COUNTY ROAD 7 - MEAD, CO

DAVID
HICKS
LAMPERT

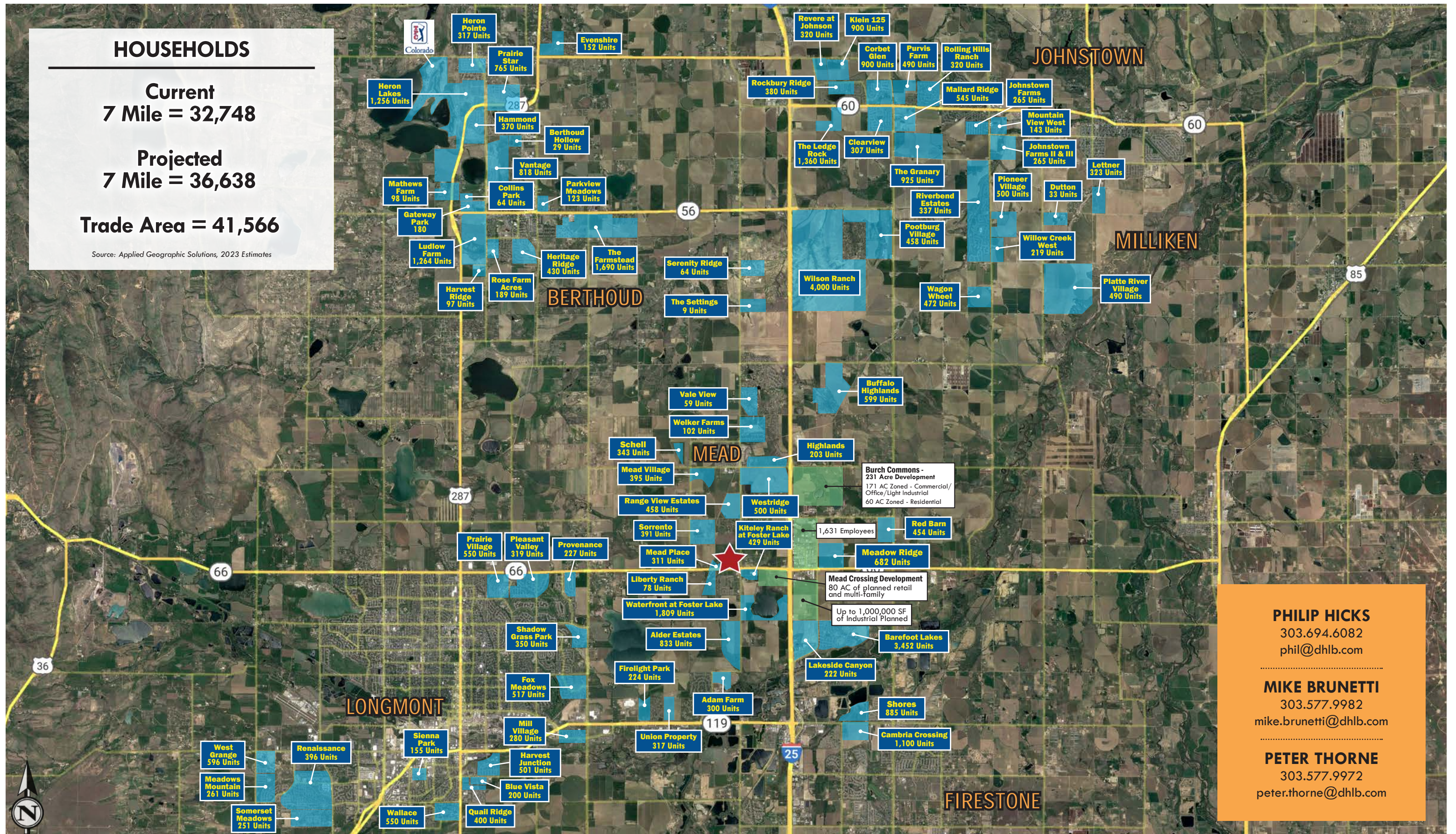
HOUSEHOLDS

Current
7 Mile = 32,748

Projected
7 Mile = 36,638

Trade Area = 41,566

Source: Applied Geographic Solutions, 2023 Estimates



PHILIP HICKS
303.694.6082
phil@dhlb.com

MIKE BRUNETTI
303.577.9982
mike.brunetti@dhlb.com

PETER THORNE
303.577.9972
peter.thorne@dhlb.com