



# 1801 E 6TH

THREE FULL FLOORS – UP TO 43,490 SF AVAILABLE NOW

## PROPERTY OVERVIEW:

1801 E 6TH ST

Space	30,305 - 43,490 SF
Availability	Immediate
Sublease Term	5-7 Years
Rental Rate	Contact Broker
Parking	3/1,000 SF

## PROPERTY FEATURES:

- Plug & Play Opportunity in East Austin
- Amenity-rich location with numerous walkable restaurants, bars, and entertainment
- Outstanding & fun creative office environment
- Furniture negotiable
- Interconnecting interior staircase between the 1st and 2nd floors
- Large flexible floorplates
- Incredible views of Downtown Austin

5<sup>TH</sup> FLOOR - 30,305 SF

2<sup>ND</sup> FLOOR - 30,299 SF

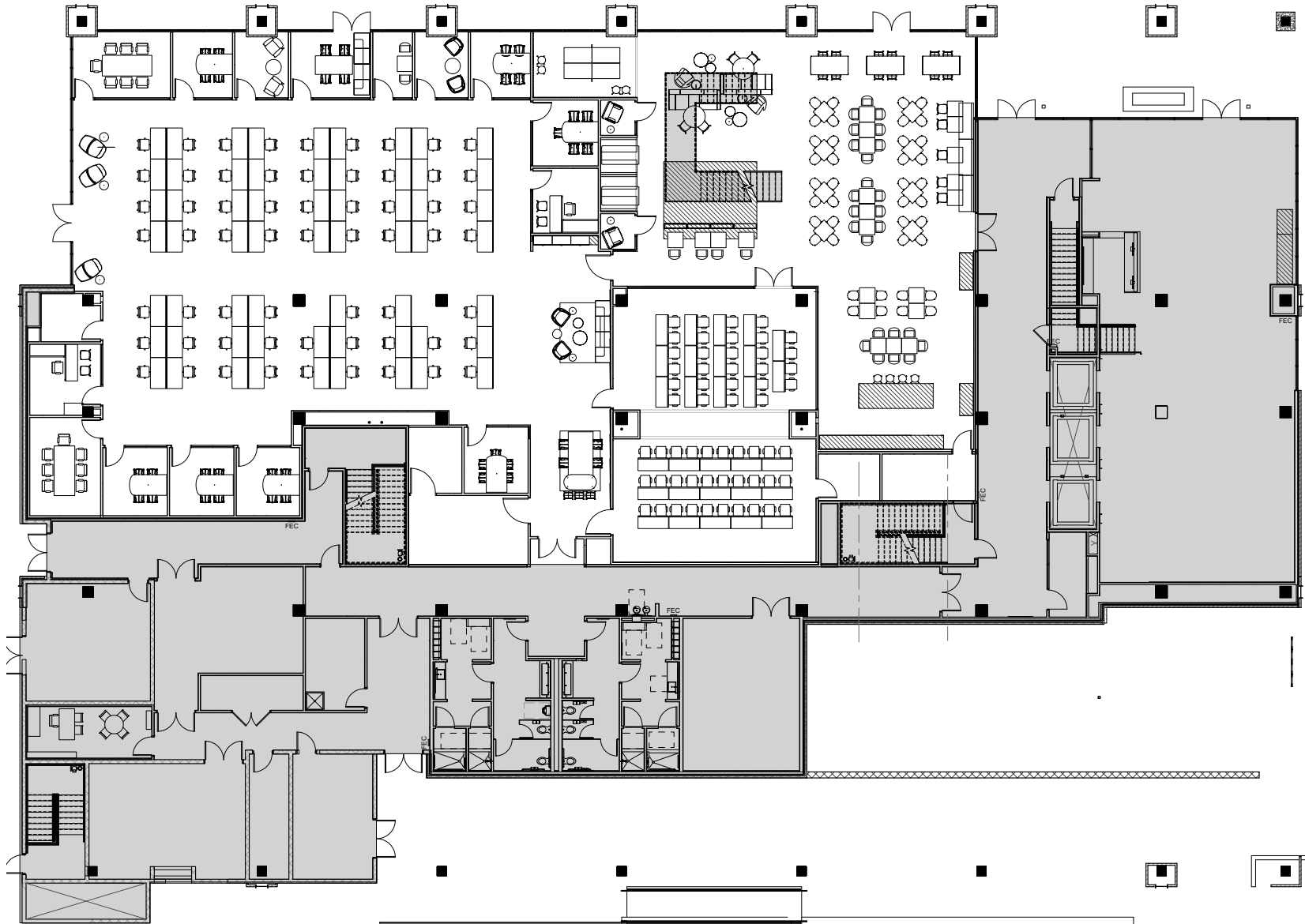
1<sup>ST</sup> FLOOR - 13,191 SF

# 1ST FLOOR

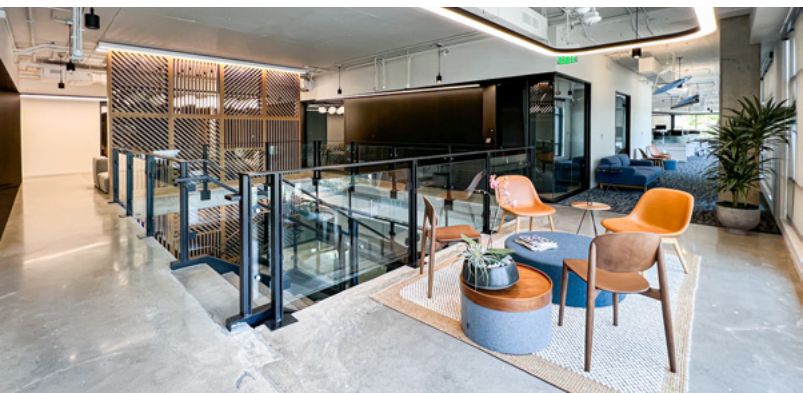


# 1ST FLOOR

 TAKE A VIRTUAL TOUR



# 2ND FLOOR

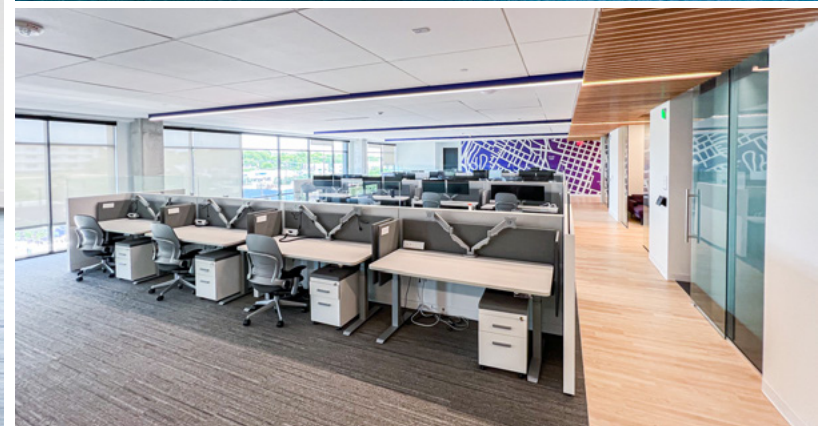


# 2ND FLOOR

360° TAKE A VIRTUAL TOUR

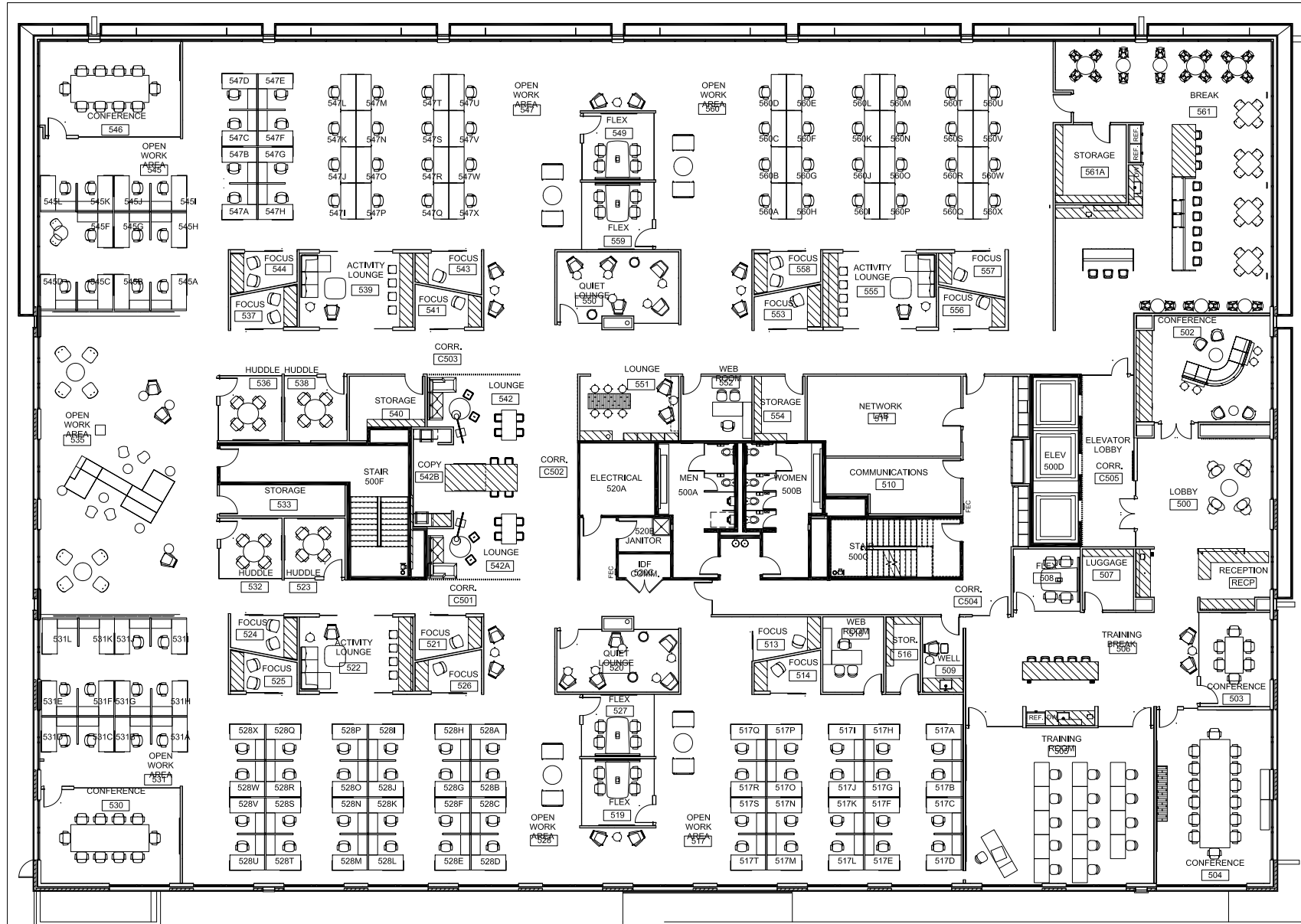


# 5TH FLOOR



# 5TH FLOOR

 TAKE A VIRTUAL TOUR





# HPi

TENANT ADVISORS

# 1801 E 6TH

CORTLAND LOWE | 512.538.1033 | [LOWE@HPITX.COM](mailto:LOWE@HPITX.COM)

CASE MCCOY | 512.538.0068 | [CMCCOY@HPITX.COM](mailto:CMCCOY@HPITX.COM)