



SOUTH FORT WORTH COMMERCE CENTER
180,556 SF Available



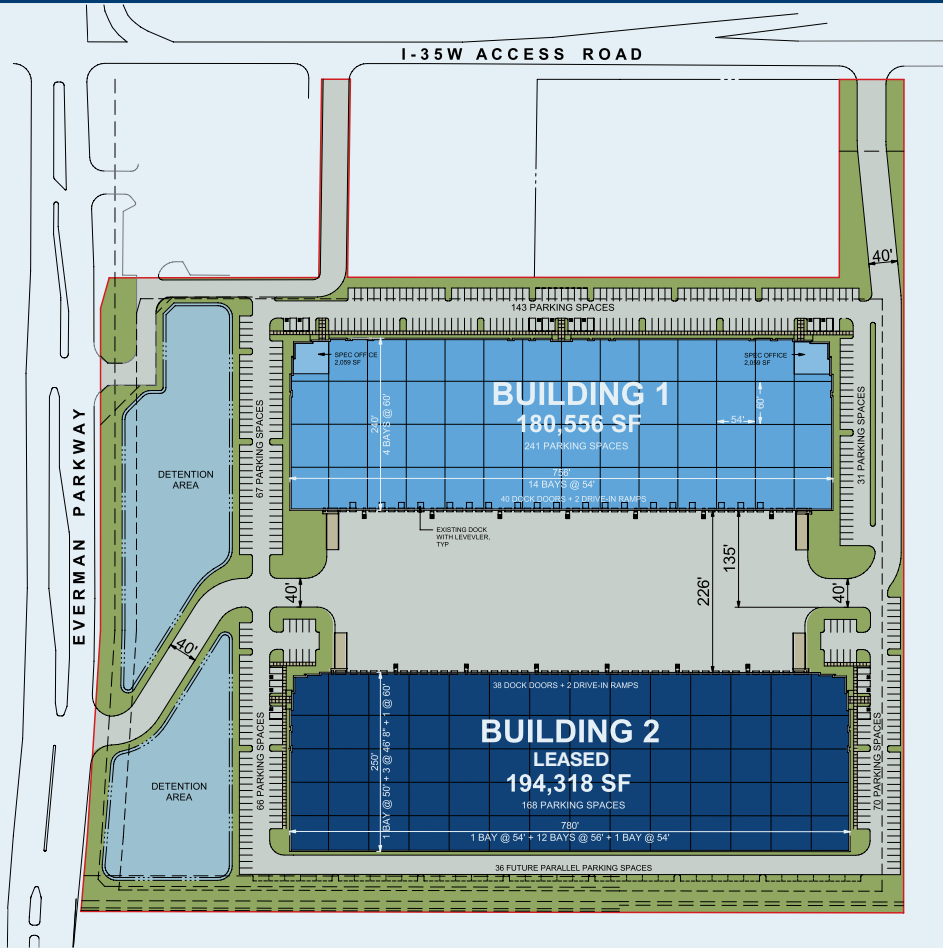
[View Property Video](#)

1021 Everman Pkwy, Fort Worth, TX 76140



www.idilogistics.com

PARK INFORMATION



BUILDING 1 - AVAILABLE

BUILDING AREA:	180,556 SF
CLEAR HEIGHT:	36'
DOCK DOORS:	40 (9' x 10')
DRIVE-IN DOORS:	2 (14' x 16')
AUTO PARKING:	241 spaces
TRUCK COURT:	226' (shared)

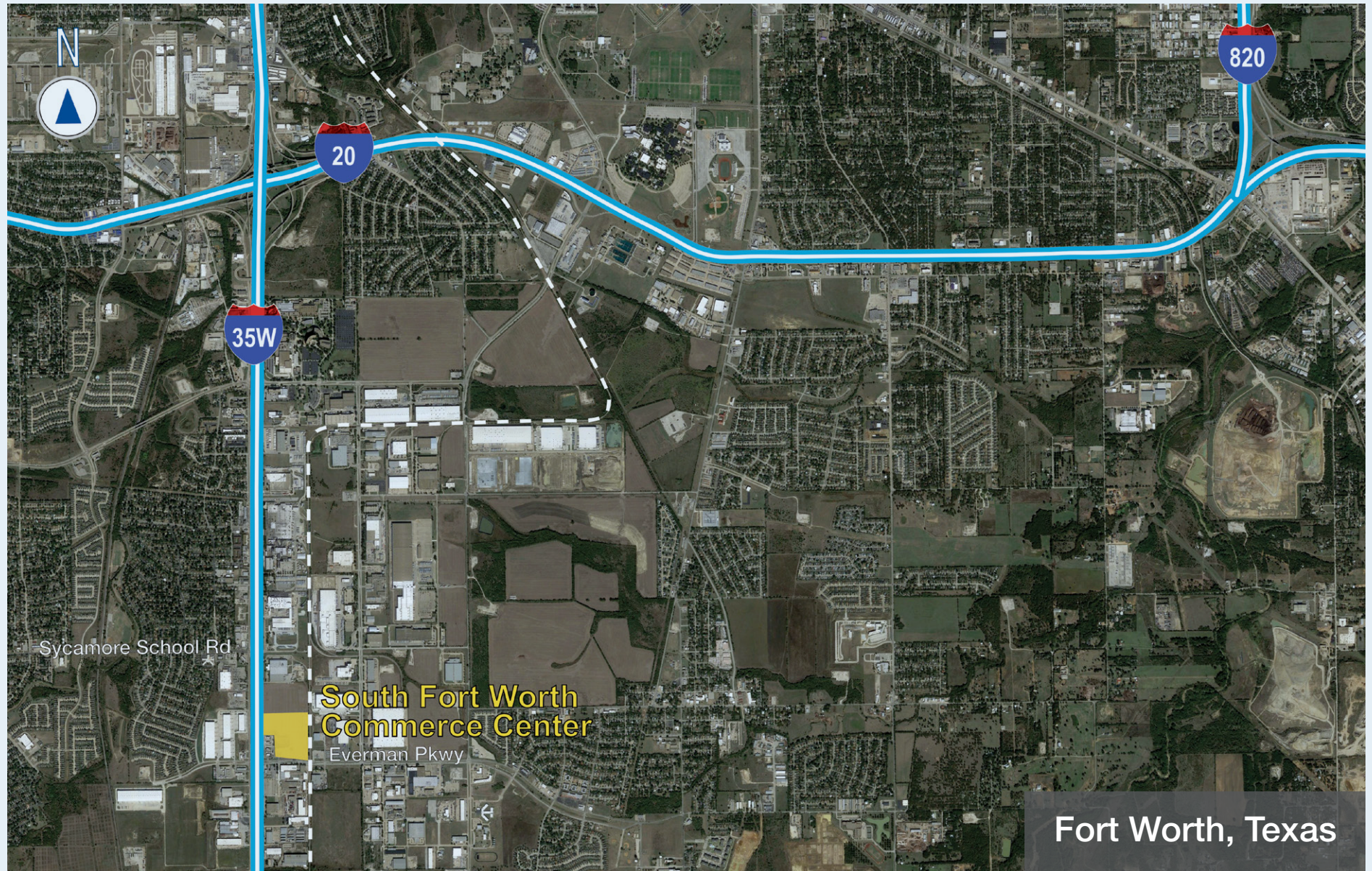
BUILDING 2 - LEASED

BUILDING AREA:	194,318 SF
CLEAR HEIGHT:	36'
DOCK DOORS:	38
DRIVE-IN DOORS:	2
AUTO PARKING:	168 spaces
TRUCK COURT:	226' (shared)

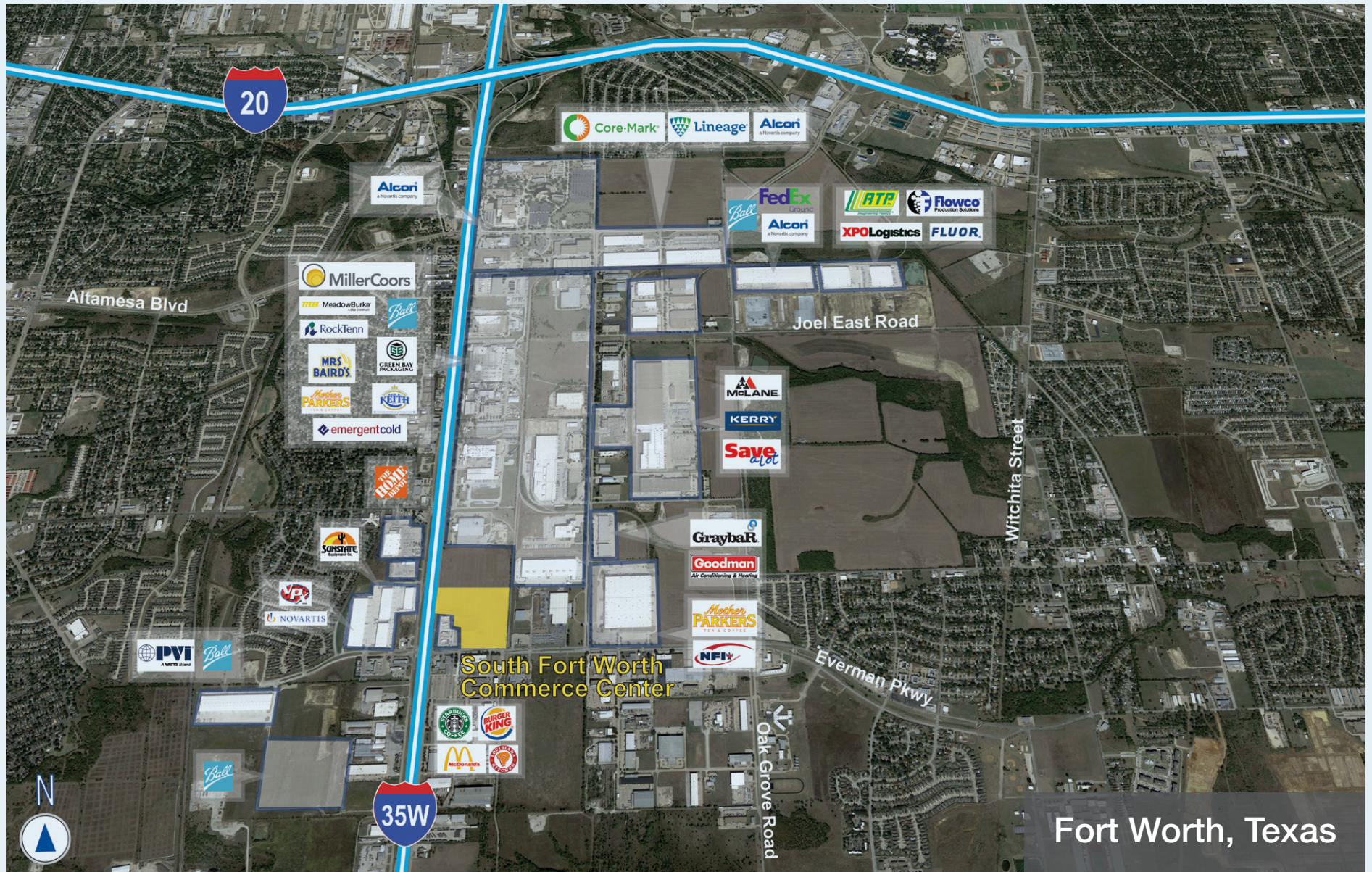
South Fort Worth Commerce Center, located in the South Fort Worth submarket on the northeast corner of I-35W and Everman Pkwy, is an ideal location for both local and regional distribution with strong workforce labor in the area.



PARK LOCATION



PARK NEIGHBORS

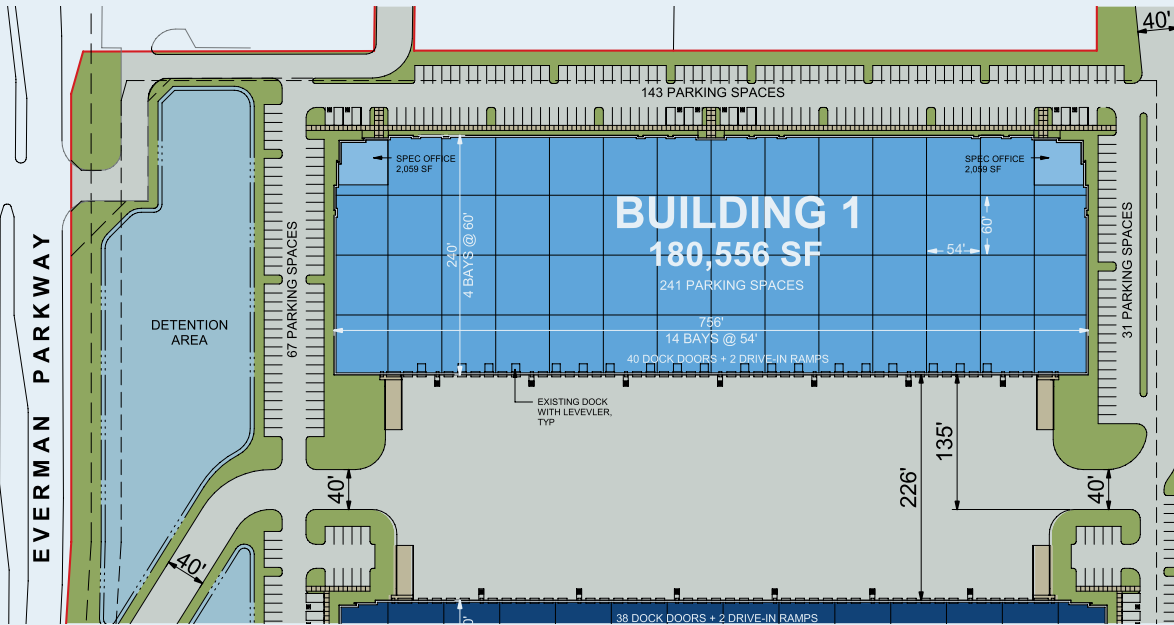


Fort Worth, Texas

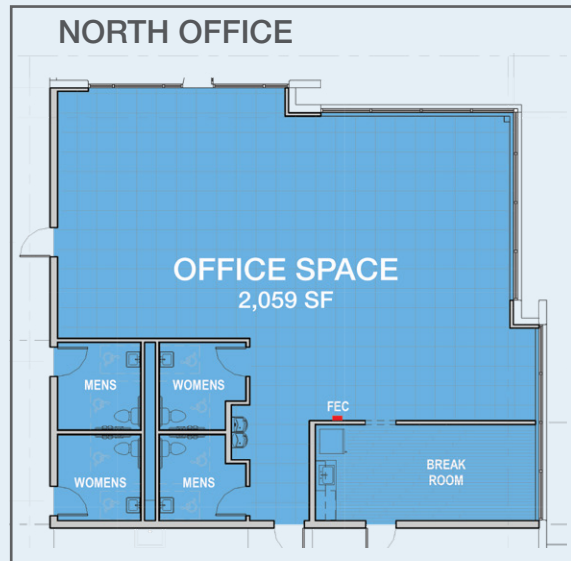
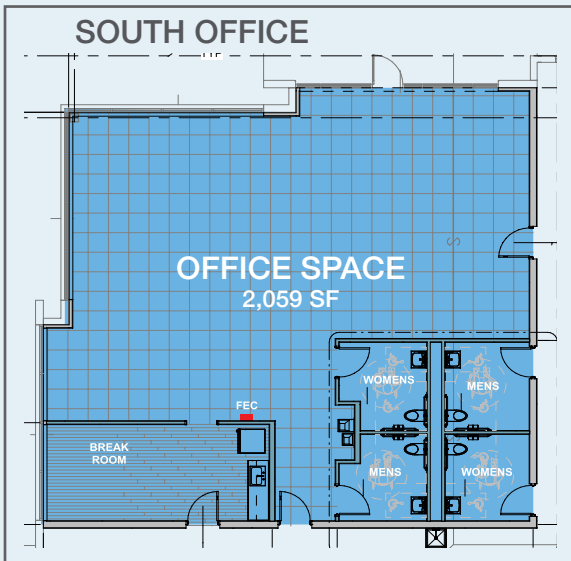
BUILDING 1 AVAILABLE SPACE

180,556

Available Square Feet



CLEAR HEIGHT:	36'
TOTAL OFFICE AREA:	4,118 SF
DOCK DOORS:	40 (9' x 10')
DRIVE-IN DOORS:	2 (14' x 16')
DOCK EQUIPMENT:	(10) 40,000 lbs. pneumatic levelers
AUTO PARKING:	241 spaces
TRUCK COURT:	226' (shared)
BUILDING DEPTH:	240'
COLUMN SPACING:	60' x 54'
FIRE PROTECTION:	ESFR
WAREHOUSE LIGHTING:	30 FC LED Fixtures with Occupancy Sensors & 15' whips



SOUTH FORT WORTH COMMERCE CENTER

One of Dallas/Forth Worth's Most Desirable Distribution Locations



DRIVING DISTANCES

METRO AREAS

Downtown Fort Worth	10 miles
Arlington	18 miles
Dallas	40 miles
Austin	181 miles
Oklahoma City	208 miles

MAJOR ROADS

I-35W	0 miles
I-20	2.5 miles
I-820	7.5 miles
I-30	8 miles

AIR

Fort Worth Meacham Airport	19 miles
DFW Airport	30 miles
Dallas Love Field Airport	41 miles

ABOUT IDI LOGISTICS

IDI Logistics is a leading developer and manager of logistics real estate in the U.S. Our fully-integrated logistics platform has a long track record of speculative development, build-to-suits and value-add acquisitions.

We are dedicated to serving our customers with exceptional quality and service.



For more information, or to set up a tour, please contact:

Matt Carthey
+1.817.710.1111
mcarthey@holtlunsford.com

George Jennings
+1.817.632.6151
gjennings@holtlunsford.com

Thomas Grafton
+1.817.632.6152
tgrafton@holtlunsford.com

Jon Harmon
+1.972.560.7001
jon.harmon@idilogistics.com

Tony Maclin
+1.972.560.7009
tony.maclin@idilogistics.com



www.idilogistics.com