

## LAND AVAILABLE



### OFFERING SUMMARY

Available: 1,334 Acres

Lease Rate: Negotiable

Lot Size: 1.33 Acres

Zoning: C-3

Market: Northwest

### PROPERTY OVERVIEW

Pad Site Available for Sale or Build to Suit at the northwest corner of Huebner Road and Vance Jackson, approximately half a mile east of Interstate 10.

### PROPERTY HIGHLIGHTS

- Great Exposure & Easy Access
- Phase I tenants: Orange Leaf, Ajuua Mexican Restaurant, Salons by JC, The Painted Plate, Kolache Stop, Domino's Pizza, Kid to Kid, UPS Store, Great Clips, Academy for Massage Therapy & Training, University Health Clinic and Duck Donuts.
- Phase II tenants: Starbucks, Orange Theory Fitness, Asoko Sushi and Huebner Smiles Dentistry & Orthodontics
- Address to be verified with the City of San Antonio

### DEMOGRAPHICS

	1 MILE	3 MILES	5 MILES
Total Households	6,720	42,765	115,193
Total Population	13,560	91,788	263,468

**RICHARD MCCALED**

Broker

210.826.0036 x230

richard@rfmcommercial.com

This information was obtained from sources deemed reliable; RFM Commercial, Inc. has not verified makes no representations or warranties, expressed or implied, as to the completeness or accuracy thereof. The presentation of this real estate information is subject to error; omission; change to price; prior sale or lease; or withdrawal without notice. You and your advisors should conduct a careful independent investigation of the property to determine if it is suitable for your intended purpose.

LAND AVAILABLE



**RICHARD MCCALED**

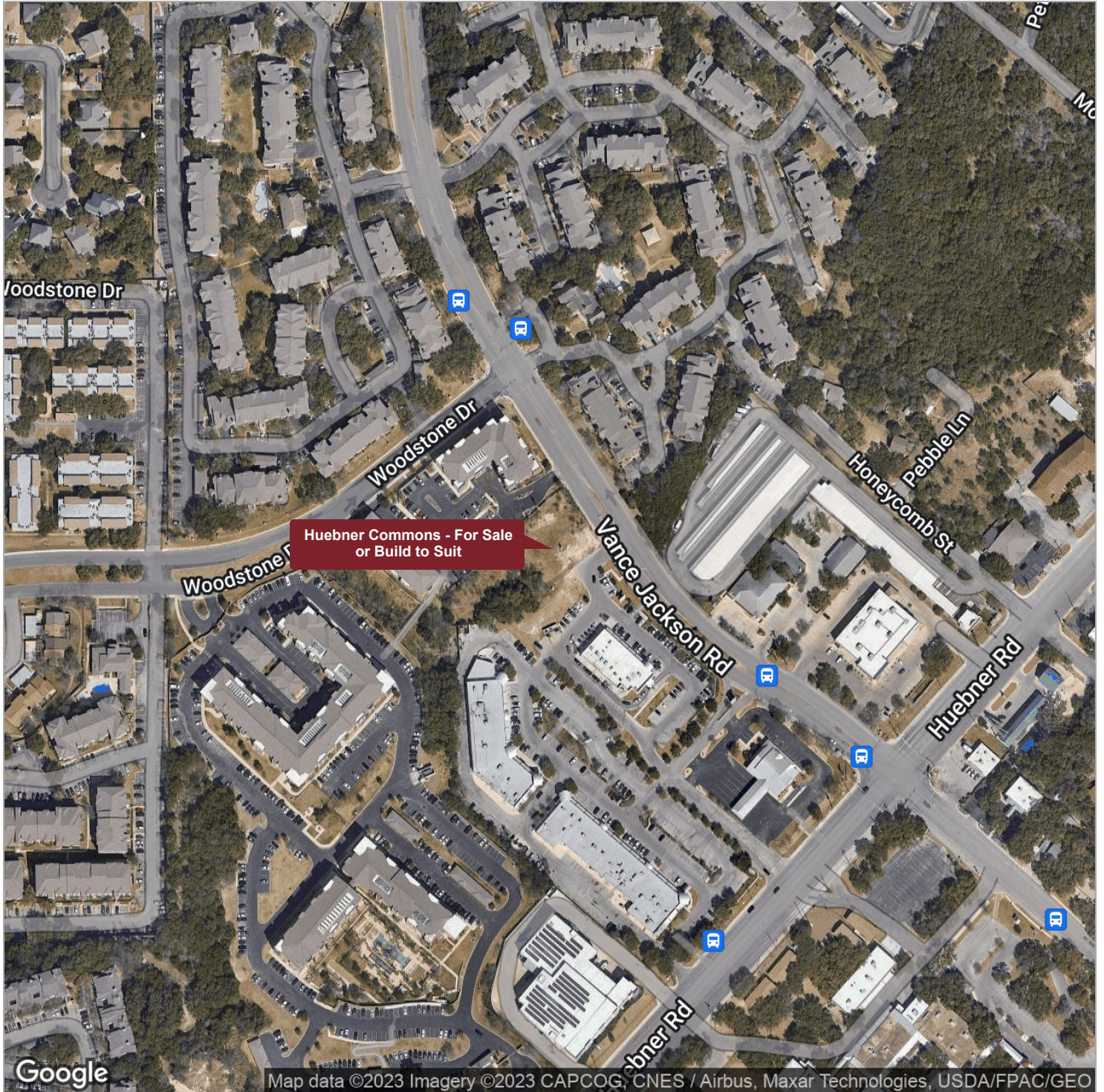
Broker

210.826.0036 x230

richard@rfmcommercial.com

This information was obtained from sources deemed reliable; RFM Commercial, Inc. has not verified makes no representations or warranties, expressed or implied, as to the completeness or accuracy thereof. The presentation of this real estate information is subject to error; omission; change to price; prior sale or lease; or withdrawal without notice. You and your advisors should conduct a careful independent investigation of the property to determine if it is suitable for your intended purpose.

LAND AVAILABLE



**RICHARD MCCALED**

Broker

210.826.0036 x230

[richard@rfmcommercial.com](mailto:richard@rfmcommercial.com)

This information was obtained from sources deemed reliable; RFM Commercial, Inc. has not verified makes no representations or warranties, expressed or implied, as to the completeness or accuracy thereof. The presentation of this real estate information is subject to error; omission; change to price; prior sale or lease; or withdrawal without notice. You and your advisors should conduct a careful independent investigation of the property to determine if it is suitable for your intended purpose.

LAND AVAILABLE



**RICHARD MCCALED**

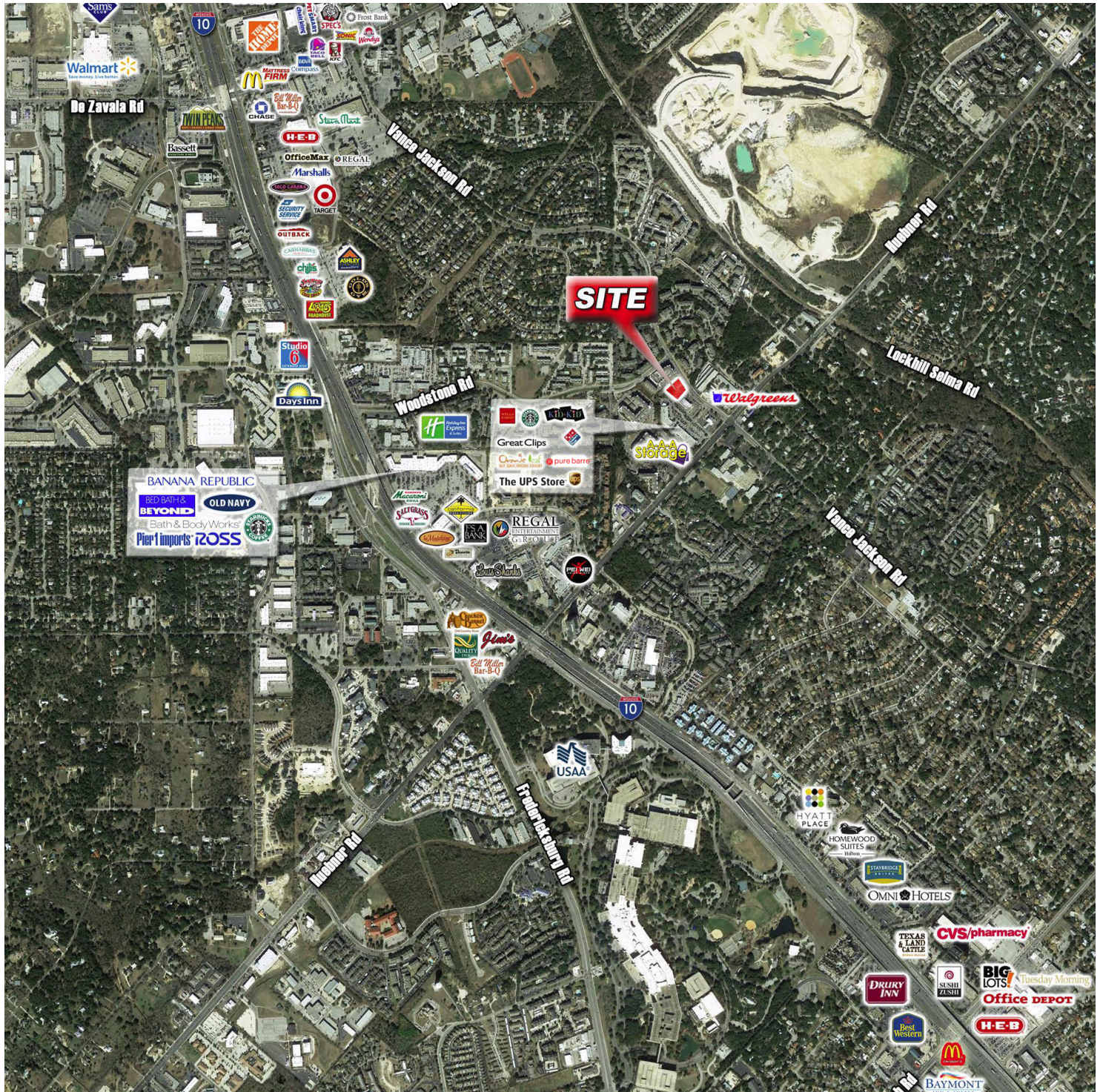
Broker

210.826.0036 x230

richard@rfmcommercial.com

This information was obtained from sources deemed reliable; RFM Commercial, Inc. has not verified makes no representations or warranties, expressed or implied, as to the completeness or accuracy thereof. The presentation of this real estate information is subject to error; omission; change to price; prior sale or lease; or withdrawal without notice. You and your advisors should conduct a careful independent investigation of the property to determine if it is suitable for your intended purpose.

LAND AVAILABLE



**RICHARD MCCALED**

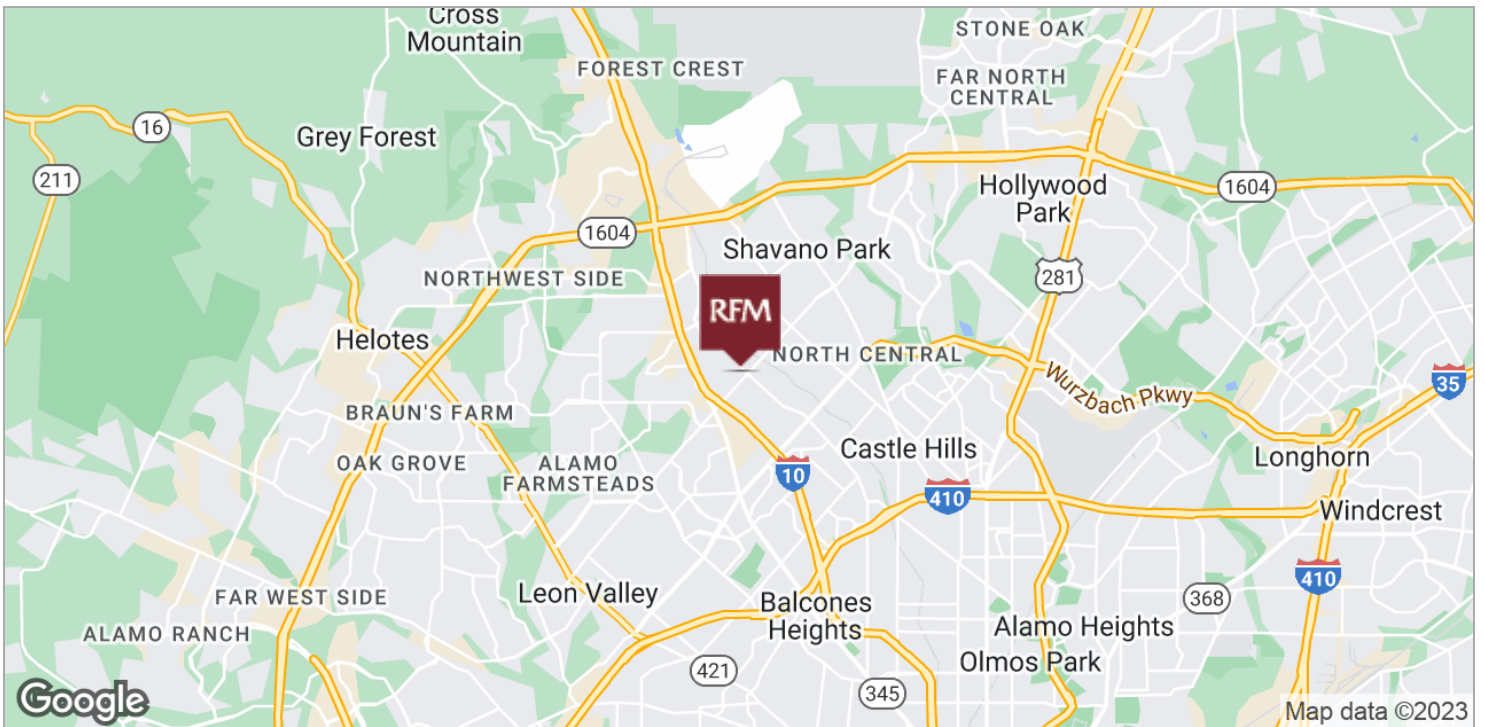
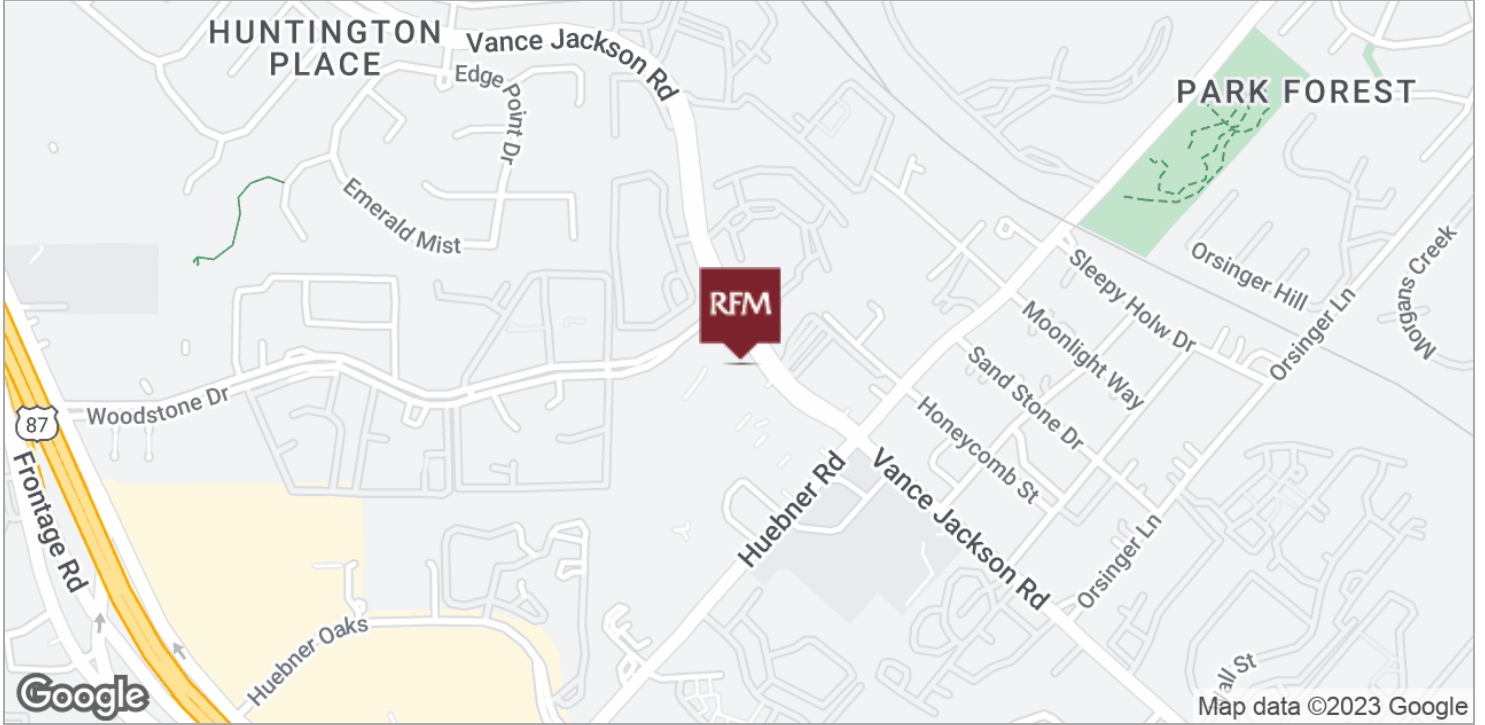
Broker

210.826.0036 x230

richard@rfmcommercial.com

This information was obtained from sources deemed reliable; RFM Commercial, Inc. has not verified makes no representations or warranties, expressed or implied, as to the completeness or accuracy thereof. The presentation of this real estate information is subject to error, omission, change to price, prior sale or lease, or withdrawal without notice. You and your advisors should conduct a careful independent investigation of the property to determine if it is suitable for your intended purpose.

LAND AVAILABLE



**RICHARD MCCALED**

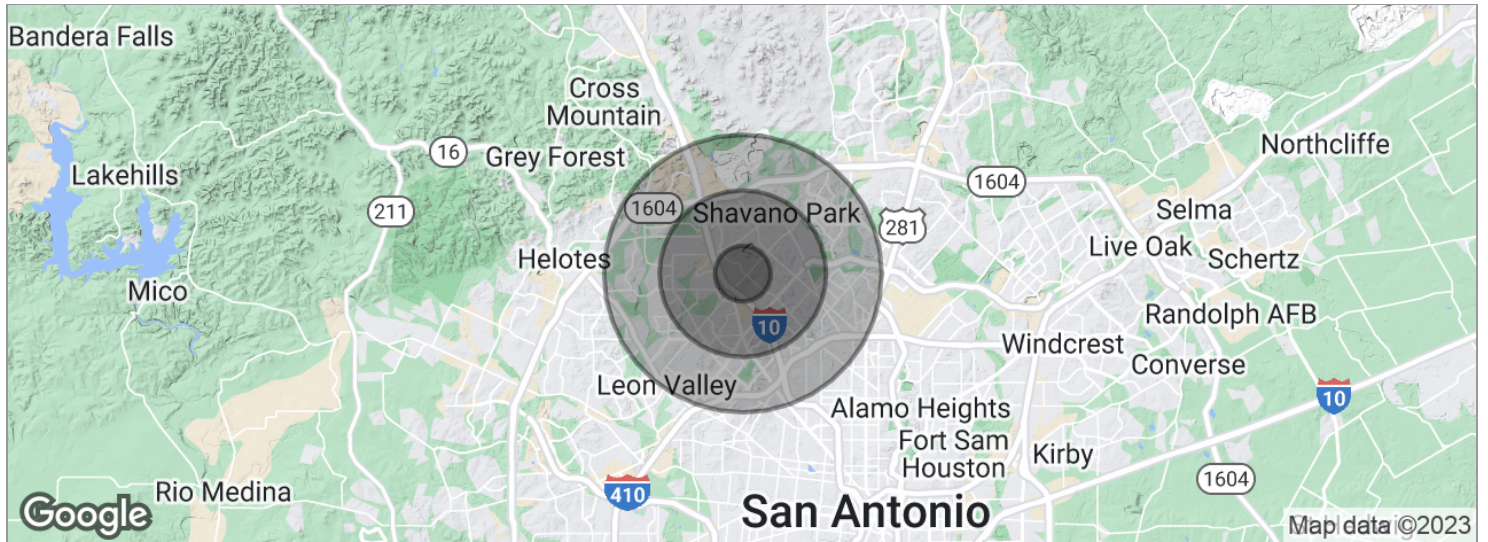
Broker

210.826.0036 x230

richard@rfmcommercial.com

This information was obtained from sources deemed reliable; RFM Commercial, Inc. has not verified makes no representations or warranties, expressed or implied, as to the completeness or accuracy thereof. The presentation of this real estate information is subject to error, omission, change to price, prior sale or lease, or withdrawal without notice. You and your advisors should conduct a careful independent investigation of the property to determine if it is suitable for your intended purpose.

## LAND AVAILABLE



Total population	13,560	91,788	263,468
Median age	31.5	34.4	34.3
Median age (Male)	32.7	33.8	33.0
Median age (Female)	30.9	35.3	35.5
Total households	6,720	42,765	115,193
# of persons per HH	2.0	2.1	2.3
Average HH income	\$60,431	\$69,331	\$67,374
Average house value	\$216,274	\$261,452	\$229,746

\* Demographic data derived from 2020 ACS - US Census

**RICHARD MCCALED**

Broker

210.826.0036 x230

richard@rfmcommercial.com

This information was obtained from sources deemed reliable; RFM Commercial, Inc. has not verified makes no representations or warranties, expressed or implied, as to the completeness or accuracy thereof. The presentation of this real estate information is subject to error; omission; change to price; prior sale or lease, or withdrawal without notice. You and your advisors should conduct a careful independent investigation of the property to determine if it is suitable for your intended purpose.



# Information About Brokerage Services

Texas law requires all real estate license holders to give the following information about brokerage services to prospective buyers, tenants, sellers and landlords.

11-2-2015



### TYPES OF REAL ESTATE LICENSE HOLDERS:

- A **BROKER** is responsible for all brokerage activities, including acts performed by sales agents sponsored by the broker.
- A **SALES AGENT** must be sponsored by a broker and works with clients on behalf of the broker.

### A BROKER'S MINIMUM DUTIES REQUIRED BY LAW (A client is the person or party that the broker represents):

- Put the interests of the client above all others, including the broker's own interests;
- Inform the client of any material information about the property or transaction received by the broker;
- Answer the client's questions and present any offer to or counter-offer from the client; and
- Treat all parties to a real estate transaction honestly and fairly.

### A LICENSE HOLDER CAN REPRESENT A PARTY IN A REAL ESTATE TRANSACTION:

**AS AGENT FOR OWNER (SELLER/LANDLORD):** The broker becomes the property owner's agent through an agreement with the owner, usually in a written listing to sell or property management agreement. An owner's agent must perform the broker's minimum duties above and must inform the owner of any material information about the property or transaction known by the agent, including information disclosed to the agent or subagent by the buyer or buyer's agent.

**AS AGENT FOR BUYER/TENANT:** The broker becomes the buyer/tenant's agent by agreeing to represent the buyer, usually through a written representation agreement. A buyer's agent must perform the broker's minimum duties above and must inform the buyer of any material information about the property or transaction known by the agent, including information disclosed to the agent by the seller or seller's agent.

**AS AGENT FOR BOTH - INTERMEDIARY:** To act as an intermediary between the parties the broker must first obtain the written agreement of *each party* to the transaction. The written agreement must state who will pay the broker and, in conspicuous bold or underlined print, set forth the broker's obligations as an intermediary. A broker who acts as an intermediary:

- Must treat all parties to the transaction impartially and fairly;
- May, with the parties' written consent, appoint a different license holder associated with the broker to each party (owner and buyer) to communicate with, provide opinions and advice to, and carry out the instructions of each party to the transaction.
- Must not, unless specifically authorized in writing to do so by the party, disclose:
  - that the owner will accept a price less than the written asking price;
  - that the buyer/tenant will pay a price greater than the price submitted in a written offer; and
  - any confidential information or any other information that a party specifically instructs the broker in writing not to disclose, unless required to do so by law.

**AS SUBAGENT:** A license holder acts as a subagent when aiding a buyer in a transaction without an agreement to represent the buyer. A subagent can assist the buyer but does not represent the buyer and must place the interests of the owner first.

### TO AVOID DISPUTES, ALL AGREEMENTS BETWEEN YOU AND A BROKER SHOULD BE IN WRITING AND CLEARLY ESTABLISH:

- The broker's duties and responsibilities to you, and your obligations under the representation agreement.
- Who will pay the broker for services provided to you, when payment will be made and how the payment will be calculated.

**LICENSE HOLDER CONTACT INFORMATION:** This notice is being provided for information purposes. It does not create an obligation for you to use the broker's services. Please acknowledge receipt of this notice below and retain a copy for your records.

RFM Commercial, Inc.	447768	info@rfmcommercial.com	2108260036
Licensed Broker /Broker Firm Name or Primary Assumed Business Name	License No.	Email	Phone
Richard F. McCaleb	336252	dick@rfmcommercial.com	2108260036
Designated Broker of Firm	License No.	Email	Phone
Licensed Supervisor of Sales Agent/ Associate	License No.	Email	Phone
Sales Agent/Associate's Name	License No.	Email	Phone

Buyer/Tenant/Seller/Landlord Initials

Date