

# Warehouse Space in Downtown Gloucester

6651 Main Street, Unit C, Gloucester, VA 23061



- Grade level garage door
- City electric available
- No HVAC in warehouse

## PROPERTY DETAILS

LEASE RATE:	\$500/ month
SPACE AVAILABLE:	2,000 SF
ZONED:	B-2 (Village Retail)



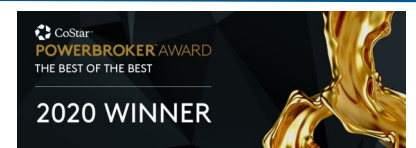
The information contained herein has been obtained from sources that are deemed to be reliable. However, Mid-Atlantic Commercial and its Agent(s) make no representation and assumes no liability as to the accuracy and validity of the information herein. Purchasers are advised to perform their own research and verification in order to determine the suitability of the Property for their purchase.

**Jonathan Guion is Managing Broker for Mid-Atlantic Commercial and can be reached at 757-867-8777 or at [jguion@midatlanticcommercial.com](mailto:jguion@midatlanticcommercial.com).**

**Terry Allan Johnson**

757.593.3335 or 757.867.8777

[tjohnson@midatlanticcommercial.com](mailto:tjohnson@midatlanticcommercial.com)





The information contained herein has been obtained from sources that are deemed to be reliable. However, Mid-Atlantic Commercial and its Agent(s) make no representation and assumes no liability as to the accuracy and validity of the information herein. Purchasers are advised to perform their own research and verification in order to determine the suitability of the Property for their purchase.

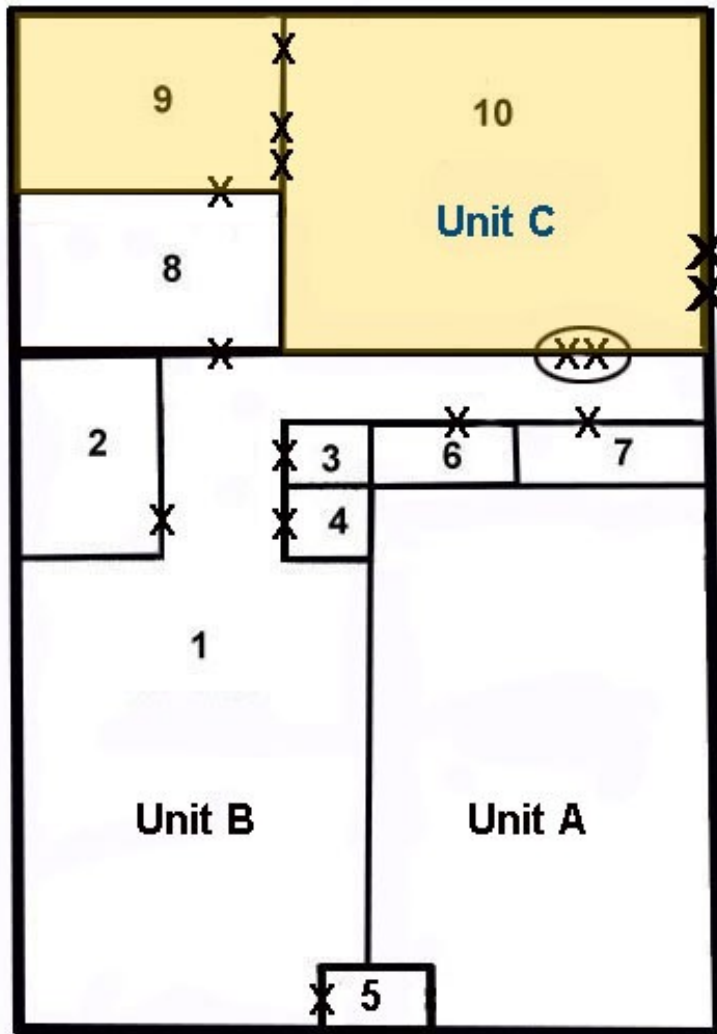
**Jonathan Guion is Managing Broker for Mid-Atlantic Commercial and can be reached at 757-867-8777 or at [jguion@midatlanticcommercial.com](mailto:jguion@midatlanticcommercial.com).**

**Terry Allan Johnson**

757.593.3335 or 757.867.8777

[tjohnson@midatlanticcommercial.com](mailto:tjohnson@midatlanticcommercial.com)

8 / 10 ft. ceiling height; grade-level roll-up door



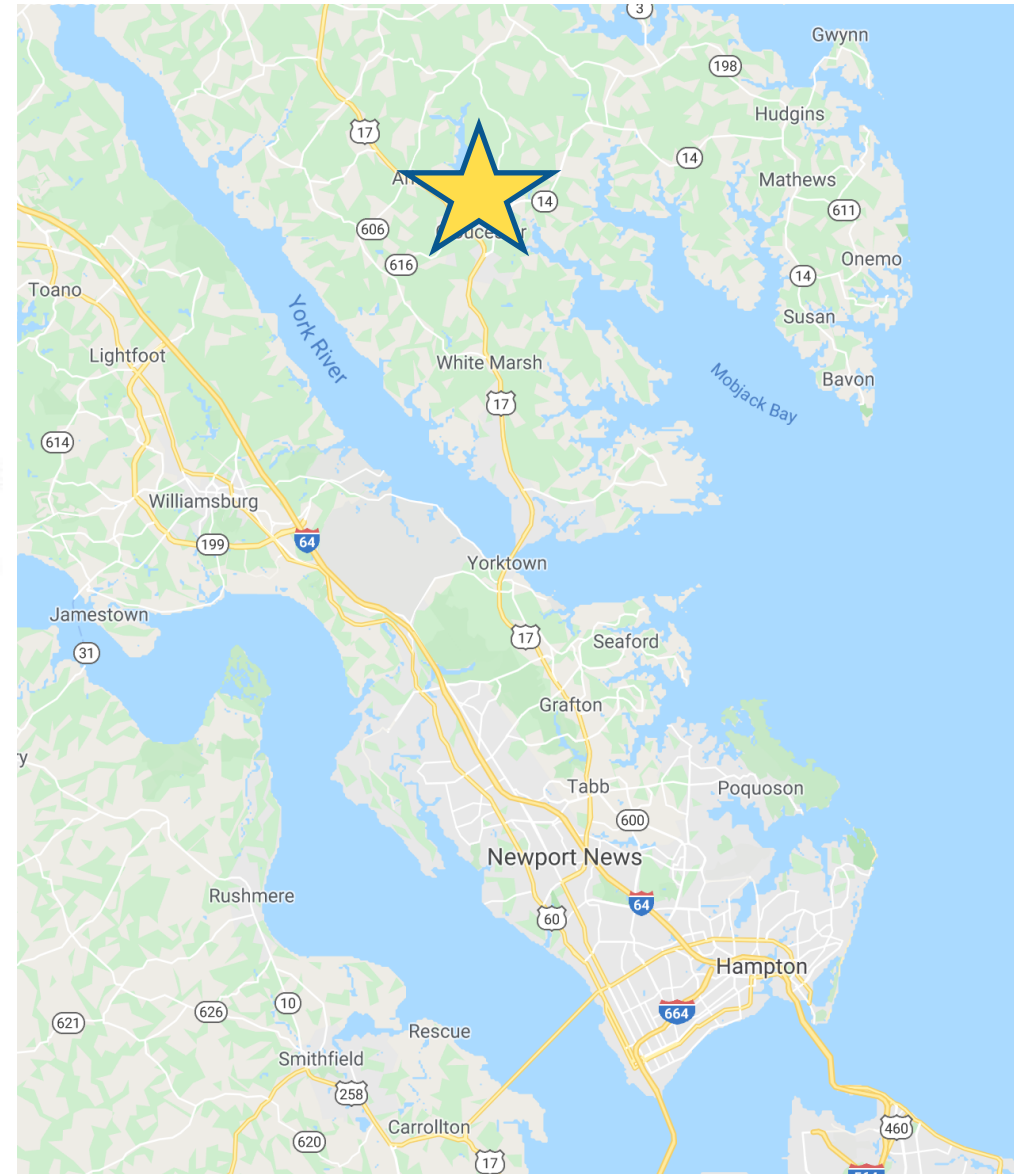
### Approximate Sizes

1. Open 22' x 50'
2. Office 9' x 18'
3. Storage 8' x 8'
4. HVAC 8' x 8'
5. Vestibule 8' x 4'
6. Storage 8' x 12'
7. Bathroom 8' x 7'

*Separate Storage  
Water & Electric  
NO HVAC*

8. Room 19' x 8'  
(8 foot ceiling)
9. Bay 19' x 41'  
(10 foot ceiling)
10. Bay 24' x 51'  
(10 foot ceiling)

Not to Scale    x — door    (xx) — double door    xx — roll-up door



The information contained herein has been obtained from sources that are deemed to be reliable. However, Mid-Atlantic Commercial and its Agent(s) make no representation and assumes no liability as to the accuracy and validity of the information herein. Purchasers are advised to perform their own research and verification in order to determine the suitability of the Property for their purchase.

**Jonathan Guion is Managing Broker for Mid-Atlantic Commercial and can be reached at 757-867-8777 or at [jguion@midatlanticcommercial.com](mailto:jguion@midatlanticcommercial.com).**

**Terry Allan Johnson**

757.593.3335 or 757.867.8777

[tjohnson@midatlanticcommercial.com](mailto:tjohnson@midatlanticcommercial.com)