

# FOR LEASE OFFICE BUILDING



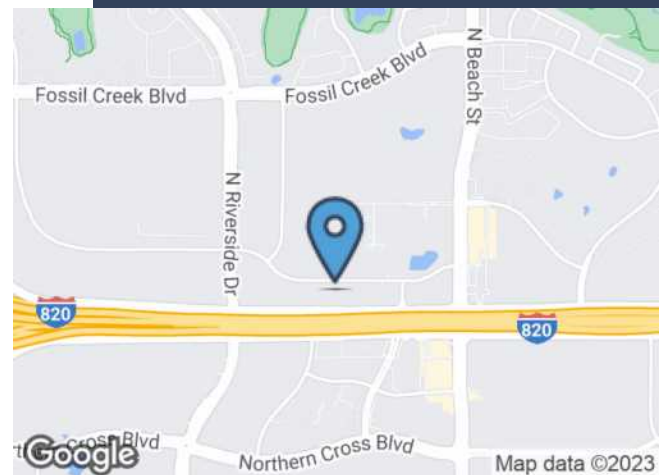
3601 NE LOOP 820, FORT WORTH, TX 76137



## PROPERTY HIGHLIGHTS

- ±1,310 - 2,495 SF Office Spaces
- Flexible Lease Terms
- Newly remodeled suites
- Minutes from Downtown Fort Worth/DFW Int'l Airport
- Located Near NE Loop 820 & I-35W

LEASE RATE \$18.50 SF/YR | MG + E & J



## CONTACT INFORMATION

### ERIC GOODWIN

Office: 817.488.4333

Cell: 214.642.8928

eric@championsdfw.com

### JIM KELLEY

Office: 817.488.4333

Cell: 817.909.7875

jim@championsdfw.com

### Champions DFW Commercial Realty

1725 E Southlake Blvd, Suite 100, Southlake, TX 76092

©2023 Champions DFW Commercial Realty LLC.

All rights reserved. The information contained herein was obtained from sources believed to be reliable. It is subject to verification. The presentation of this property is submitted subject to errors, omissions, change of price or conditions, prior to sale or lease, or withdrawal without notice.

# FOR LEASE OFFICE BUILDING



3601 NE LOOP 820, FORT WORTH, TX 76137

## LEASE SPACES

### LEASE INFORMATION

Lease Type:	MG+E & J	Lease Term:	24 to 60 months
Total Space:	1,310-2,495 SF	Lease Rate:	\$18.50 SF/yr

### AVAILABLE SPACES

SUITE	TENANT	SIZE (SF)	LEASE TYPE	LEASE RATE	
Suite 107	Available	2,495 SF	MG+E & J	\$18.50 SF/yr	-
Suite 108	Available	1,310 SF	MG+E & J	\$18.50 SF/yr	-

#### Champions DFW Commercial Realty

1725 E Southlake Blvd, Suite 100, Southlake, TX 76092

©2023 Champions DFW Commercial Realty LLC.

All rights reserved. The information contained herein was obtained from sources believed to be reliable. It is subject to verification. The presentation of this property is submitted subject to errors, omissions, change of price or conditions, prior to sale or lease, or withdrawal without notice.

**FOR LEASE**  
**OFFICE BUILDING**

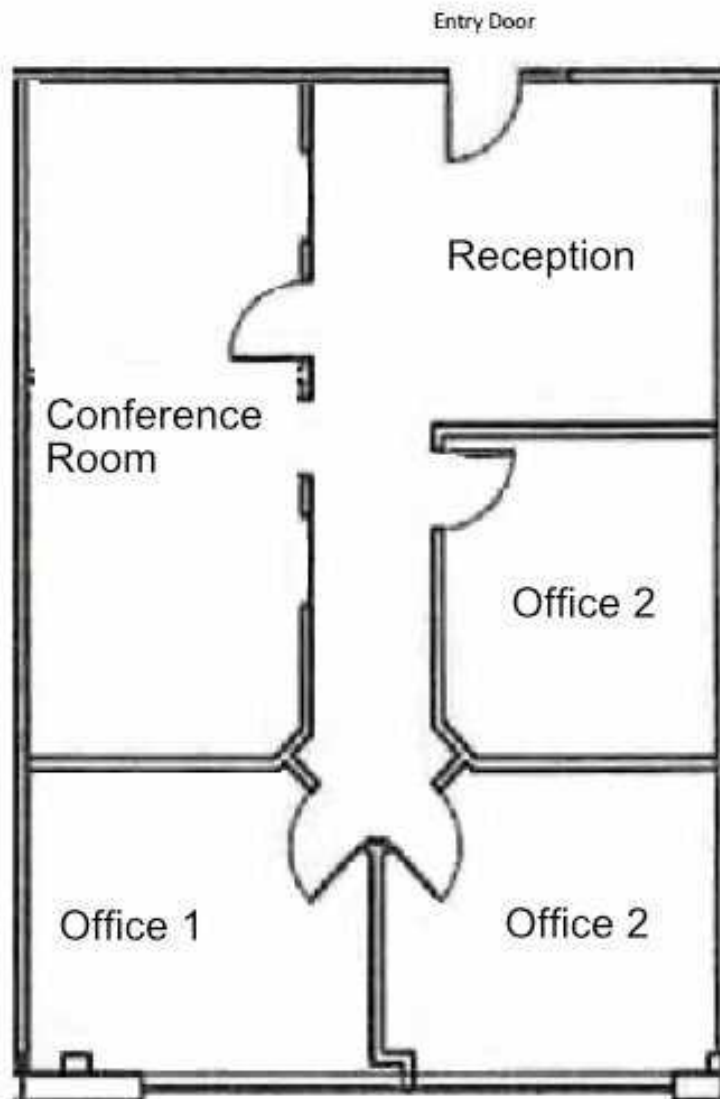


3601 NE LOOP 820, FORT WORTH, TX 76137

**SUITE 108 FLOOR PLAN**

**Suite 108**

*(1,310 RSF)*



**Champions DFW Commercial Realty**

1725 E Southlake Blvd, Suite 100, Southlake, TX 76092

©2023 Champions DFW Commercial Realty LLC.

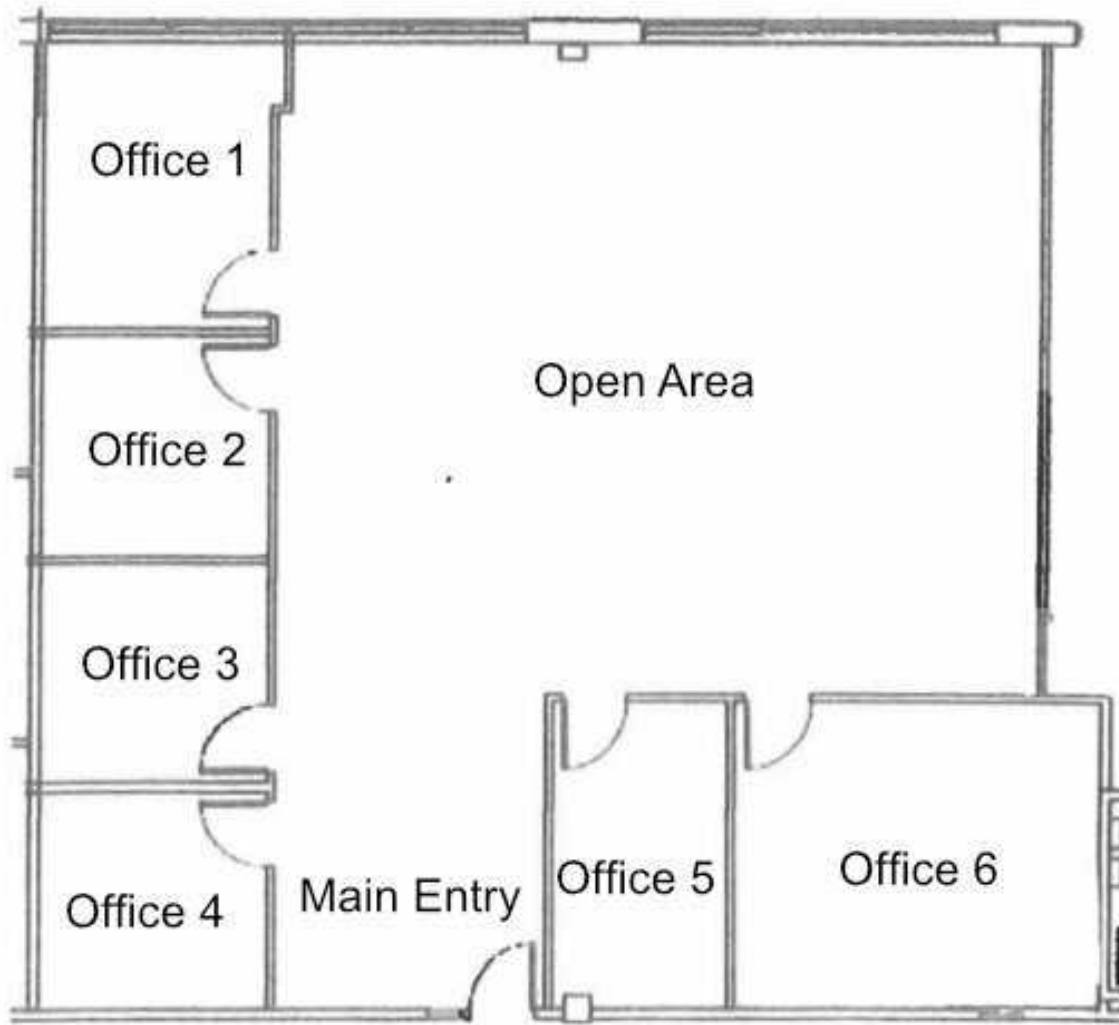
All rights reserved. The information contained herein was obtained from sources believed to be reliable. It is subject to verification. The presentation of this property is submitted subject to errors, omissions, change of price or conditions, prior to sale or lease, or withdrawal without notice

**FOR LEASE**  
**OFFICE BUILDING**



3601 NE LOOP 820, FORT WORTH, TX 76137

**SUITE 107 FLOOR PLAN**



**Champions DFW Commercial Realty**

1725 E Southlake Blvd, Suite 100, Southlake, TX 76092

©2023 Champions DFW Commercial Realty LLC.

All rights reserved. The information contained herein was obtained from sources believed to be reliable. It is subject to verification. The presentation of this property is submitted subject to errors, omissions, change of price or conditions, prior to sale or lease, or withdrawal without notice

# FOR LEASE OFFICE BUILDING



3601 NE LOOP 820, FORT WORTH, TX 76137

## EXTERIOR PHOTOS



### Champions DFW Commercial Realty

1725 E Southlake Blvd, Suite 100, Southlake, TX 76092

©2023 Champions DFW Commercial Realty LLC.

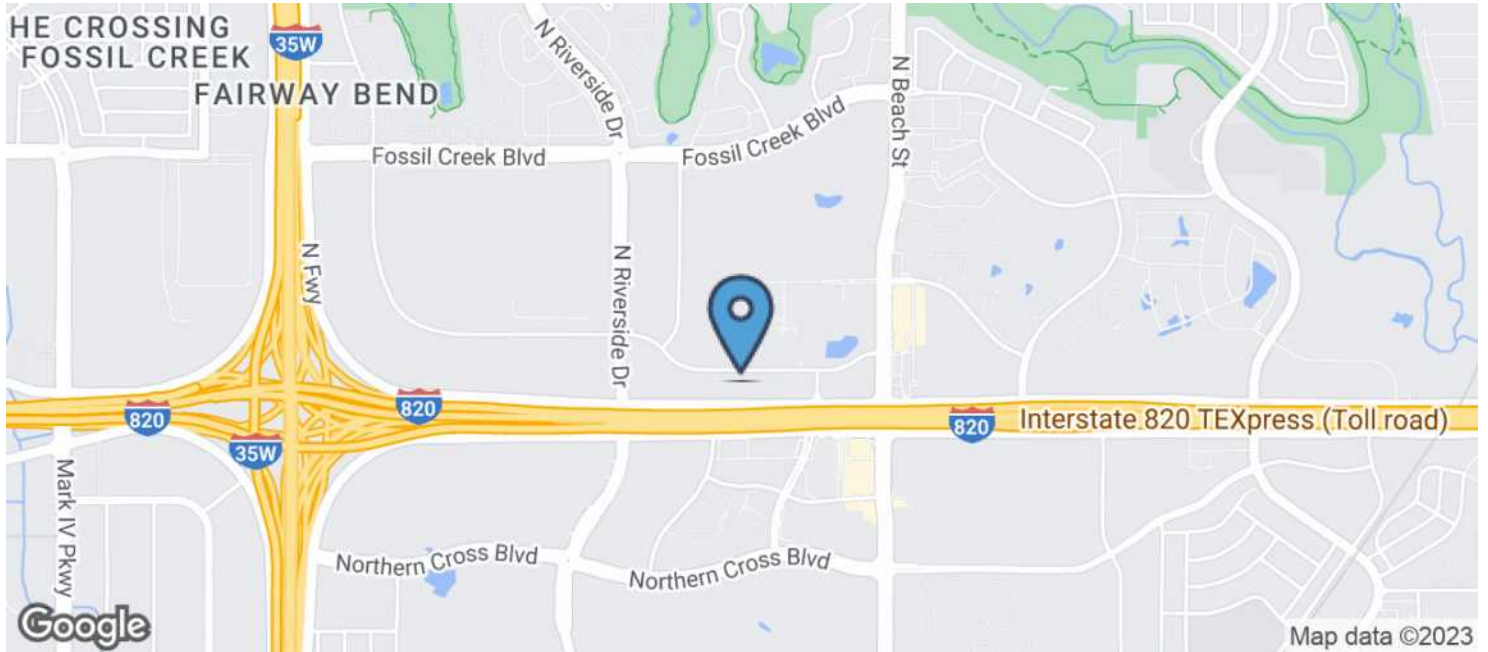
All rights reserved. The information contained herein was obtained from sources believed to be reliable. It is subject to verification. The presentation of this property is submitted subject to errors, omissions, change of price or conditions, prior to sale or lease, or withdrawal without notice.

# FOR LEASE OFFICE BUILDING



3601 NE LOOP 820, FORT WORTH, TX 76137

## DEMOGRAPHICS MAP & REPORT



### POPULATION

	1 MILE	3 MILES	5 MILES
Total Population	5,839	83,635	229,760
Average age	32.5	32.0	32.7
Average age (Male)	31.5	30.1	31.6
Average age (Female)	32.5	33.0	33.5

### HOUSEHOLDS & INCOME

	1 MILE	3 MILES	5 MILES
Total households	2,574	30,432	78,491
# of persons per HH	2.3	2.7	2.9
Average HH income	\$74,664	\$66,397	\$66,684
Average house value	\$156,742	\$125,194	\$137,318

\* Demographic data derived from 2020 ACS - US Census

### Champions DFW Commercial Realty

1725 E Southlake Blvd, Suite 100, Southlake, TX 76092

©2023 Champions DFW Commercial Realty LLC.

All rights reserved. The information contained herein was obtained from sources believed to be reliable. It is subject to verification. The presentation of this property is submitted subject to errors, omissions, change of price or conditions, prior to sale or lease, or withdrawal without notice.

# FOR LEASE OFFICE BUILDING



3601 NE LOOP 820, FORT WORTH, TX 76137

## BROKER CONTACTS



### ERIC GOODWIN

Director of Office & Industrial Services

**C:** 214.642.8928

[eric@championsdfw.com](mailto:eric@championsdfw.com)



### JIM KELLEY

Principal/Broker

**C:** 817.909.7875

[jim@championsdfw.com](mailto:jim@championsdfw.com)

#### Champions DFW Commercial Realty

1725 E Southlake Blvd, Suite 100, Southlake, TX 76092

©2023 Champions DFW Commercial Realty LLC.

All rights reserved. The information contained herein was obtained from sources believed to be reliable. It is subject to verification. The presentation of this property is submitted subject to errors, omissions, change of price or conditions, prior to sale or lease, or withdrawal without notice.



**CHAMPIONS**  
DFW COMMERCIAL REALTY

**Champions DFW Commercial Realty**

1725 E Southlake Blvd, Suite 100, Southlake, TX 76092

©2023 Champions DFW Commercial Realty LLC.

All rights reserved. The information contained herein was obtained from sources believed to be reliable. It is subject to verification. The presentation of this property is submitted subject to errors, omissions, change of price or conditions, prior to sale or lease, or withdrawal without notice