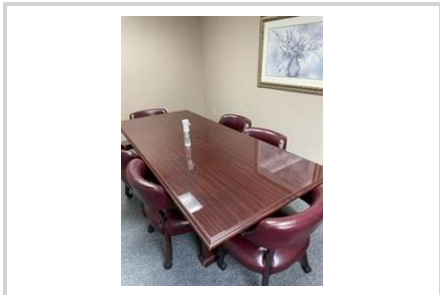




## Strongsville

**Elyria, Ohio 44035 - \$3,000**

168 Cleveland Street, , Elyria, 44035



• Type: **Commercial** • Style: **2 Storey** • Half Bathrooms: **2** • Size: **3708 square feet**



**Ken Weber**  
fairtoall@gmail.com  
12162992449  
www.kenweber.biz

**Strongsville**

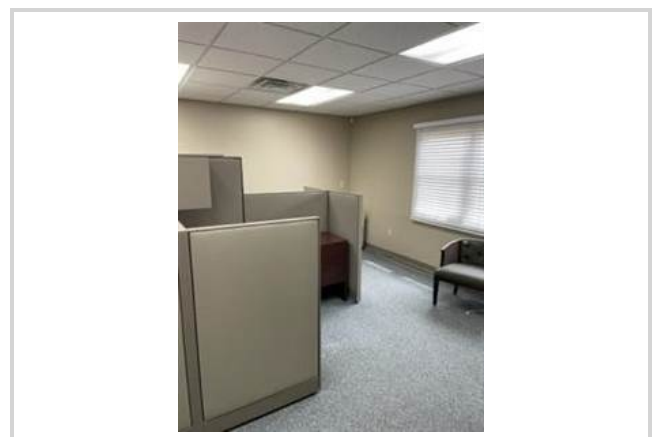
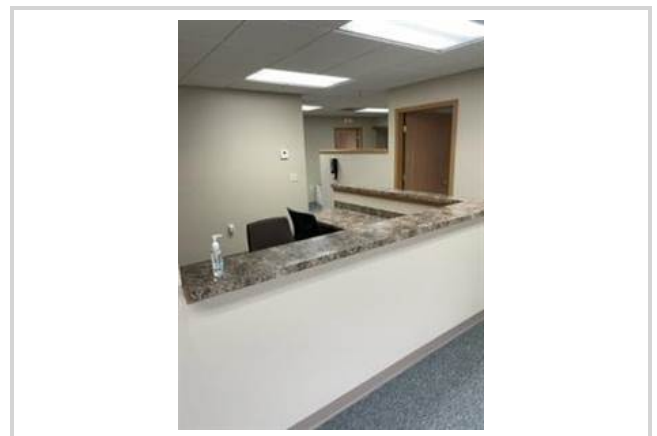
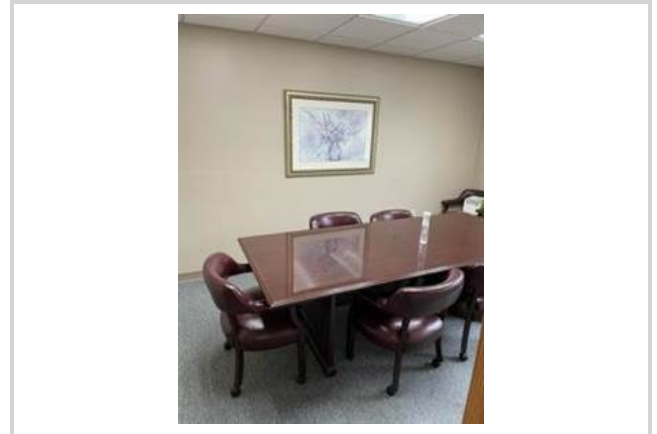
12198 Pearl Road, Strongsville, 44136

## Property Summary

Type: **Commercial**  
Style: **2 Storey**  
Half Bathrooms: **2**  
Garage: **No**  
Basement: **Yes, Full**  
Size: **3708 square feet**  
Has Suite: **Yes**  
Year Built: **1987**  
Taxes: **\$0**  
Development Level: **Built**

## Description

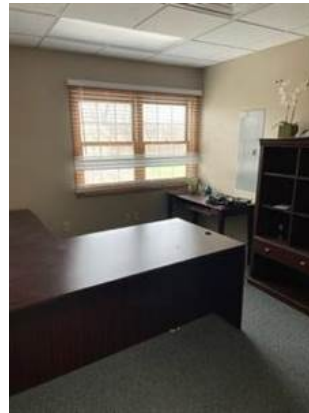
Outstanding well maintained professional office building, freestanding. Well appointed, part of the basement is finished, and the lower level has a walkout entrance. Signage is available. This is a rare opportunity on the west side of Elyria, just west of Route 57. Parking on the main level and more on the lower level. Has been an accountant's office since it was built. Tenant is moving to a smaller space in the building. 3-5-year lease with as many renewals as desired. Building insurance, snow removal, and landscaping included. Reasonable Landlord looking for long term solid Tenant.



Additional Photos



## Additional Photos



*Information is deemed to be correct but not guaranteed.*