

# FOR SUBLEASE

Four Penn Center West  
Pittsburgh, PA 15276



14,800 RSF

## PROPERTY HIGHLIGHTS

14,800 RSF sublease space available on the third floor of Four Penn Center West. Sublease until June 2025. Furniture included.

- Ample free parking and easy access to Parkway West
- 10 minutes to Pittsburgh International Airport, 10 minutes to downtown, 2 minutes to Settler's Ridge, and 3 miles to Robinson Town Centre
- On site property management, coffee shop and deli in complex
- Outdoor public spaces and natural light



### EDIE HARTMAN

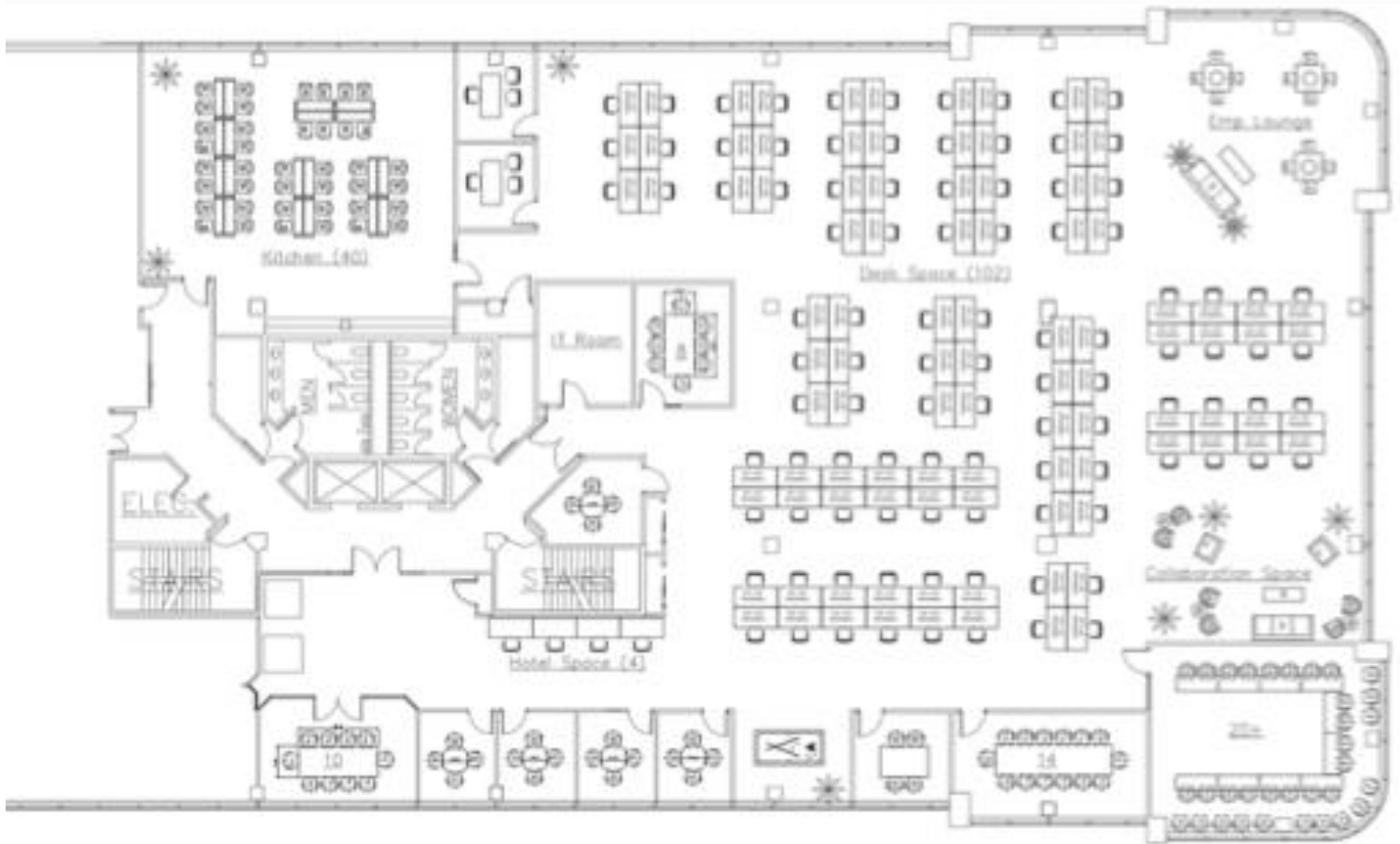
412.697.1670  
edie.hartman@cushwake.com  
LIC# RS330981

### CUSHMAN & WAKEFIELD

310 Grant Street, Suite 1825, Pittsburgh, PA  
412 391 2600  
cushmanwakefield.com

# FLOOR PLAN

14,800 RSF



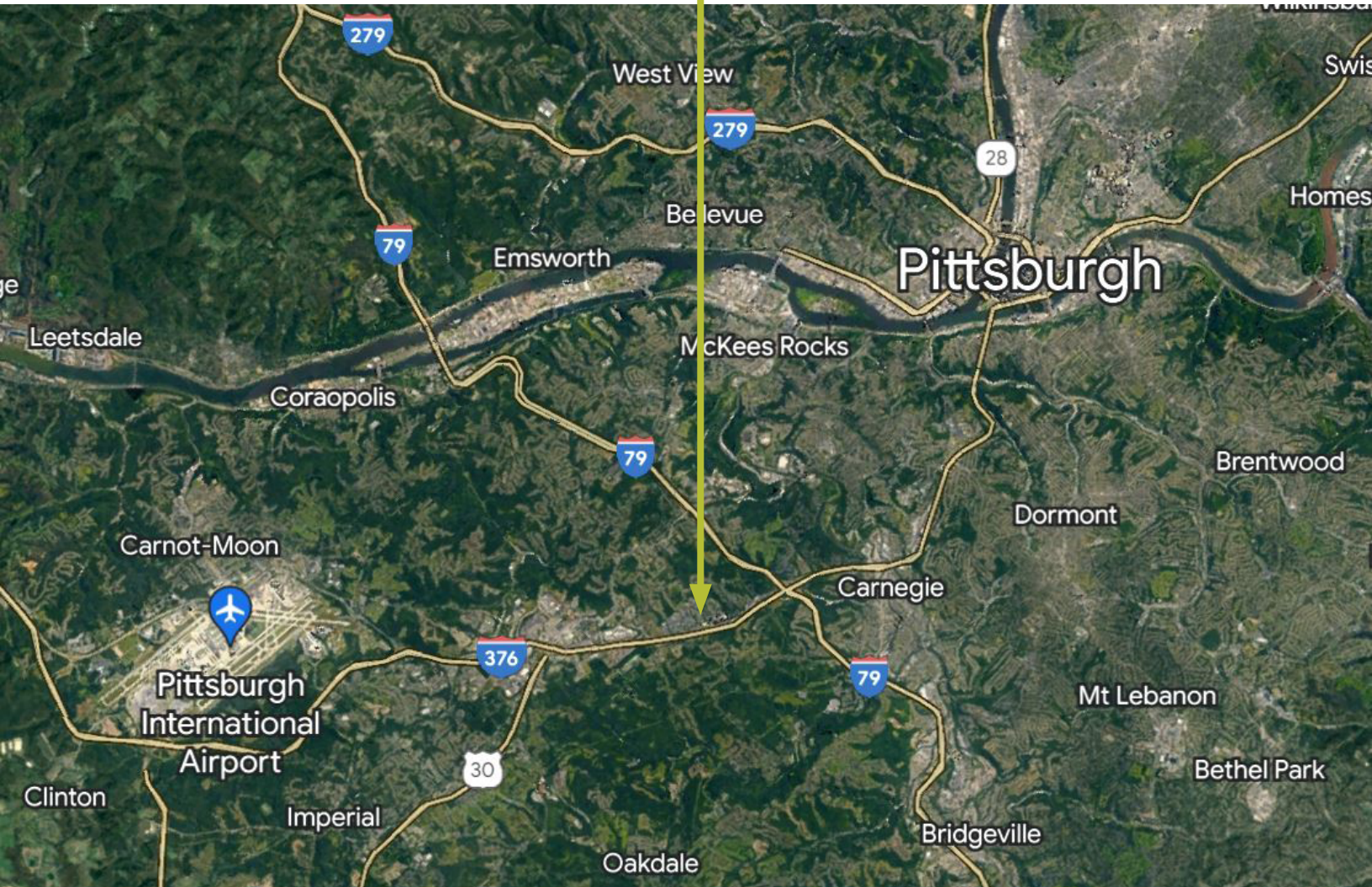
# PHOTOS



# LOCATION



FOUR PENN  
CENTER WEST



**EDIE HARTMAN**

412.697.1670  
edie.hartman@cushwake.com  
LIC# RS330981

**CUSHMAN & WAKEFIELD**

310 Grant Street, Suite 1825, Pittsburgh, PA  
412 391 2600  
[cushmanwakefield.com](http://cushmanwakefield.com)

©2023 Cushman & Wakefield. All rights reserved. The information contained in this communication is strictly confidential. This information has been obtained from sources believed to be reliable but has not been verified. NO WARRANTY OR REPRESENTATION, EXPRESS OR IMPLIED, IS MADE AS TO THE CONDITION OF THE PROPERTY (OR PROPERTIES) REFERENCED HEREIN OR AS TO THE ACCURACY OR COMPLETENESS OF THE INFORMATION CONTAINED HEREIN, AND SAME IS SUBMITTED SUBJECT TO ERRORS, OMISSIONS, CHANGE OF PRICE, RENTAL OR OTHER CONDITIONS, WITHDRAWAL WITHOUT NOTICE, AND TO ANY SPECIAL LISTING CONDITIONS IMPOSED BY THE PROPERTY OWNER(S). ANY PROJECTIONS, OPINIONS OR ESTIMATES ARE SUBJECT TO UNCERTAINTY AND DO NOT SIGNIFY CURRENT OR FUTURE PROPERTY PERFORMANCE.