



FOR LEASE

ONE ADAMS PLACE

300-310 SEVEN FIELDS BLVD.
SEVEN FIELDS, PA 16046



PROPERTY FEATURES

- 7,525 SF and 9,100 SF of office space available, both spaces subdividable
- Full-service rent, including cleaning and all utilities
- 4.2/1,000 SF parking ratio
- Tenants' employees are entitled to free use of the 24/7, state-of-the-art fitness center located across the street in *The Estates at Seven Fields* townhouse community
- On-site management
- Efficient floor plan with abundant natural light
- Conveniently located within 2 miles of I-79 and I-76
- Class A office space - high quality finish



TIMOTHY GOETZ

412.391.2632

tim.r.goetz@cushwake.com

LIC# RM042209A

CUSHMAN & WAKEFIELD

310 Grant Street, Suite 1825, Pittsburgh, PA

412 391 2600

cushmanwakefield.com

©2023 Cushman & Wakefield. All rights reserved. The information contained in this communication is strictly confidential. This information has been obtained from sources believed to be reliable but has not been verified. NO WARRANTY OR REPRESENTATION, EXPRESS OR IMPLIED, IS MADE AS TO THE CONDITION OF THE PROPERTY (OR PROPERTIES) REFERENCED HEREIN OR AS TO THE ACCURACY OR COMPLETENESS OF THE INFORMATION CONTAINED HEREIN, AND SAME IS SUBMITTED SUBJECT TO ERRORS, OMISSIONS, CHANGE OF PRICE, RENTAL OR OTHER CONDITIONS, WITHDRAWAL WITHOUT NOTICE, AND TO ANY SPECIAL LISTING CONDITIONS IMPOSED BY THE PROPERTY OWNER(S). ANY PROJECTIONS, OPINIONS OR ESTIMATES ARE SUBJECT TO UNCERTAINTY AND DO NOT SIGNIFY CURRENT OR FUTURE PROPERTY PERFORMANCE.

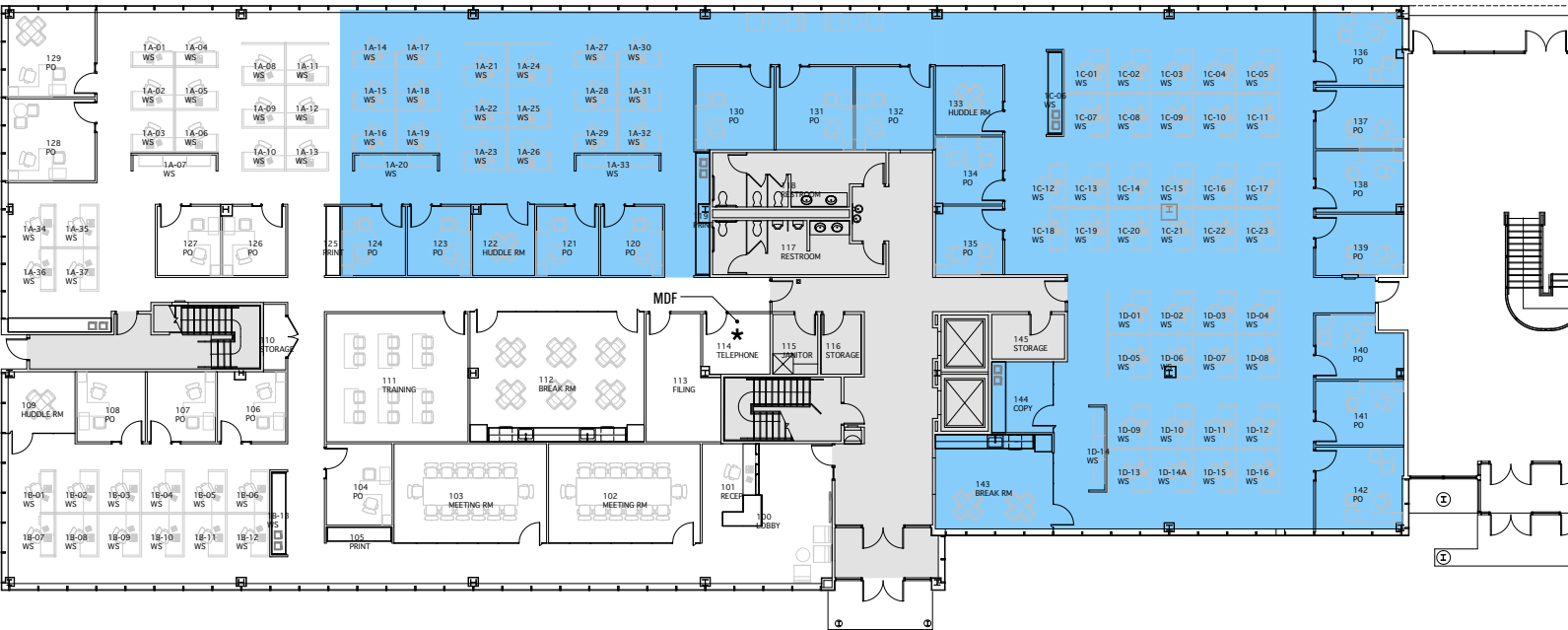


FOR LEASE

ONE ADAMS PLACE

300-310 SEVEN FIELDS BLVD.
SEVEN FIELDS, PA 16046

1ST FLOOR: 9,100 SF AVAILABLE



TIMOTHY GOETZ
412.391.2632
tim.r.goetz@cushwake.com
LIC# RM042209A

CUSHMAN & WAKEFIELD
310 Grant Street, Suite 1825, Pittsburgh, PA
412 391 2600
cushmanwakefield.com

©2023 Cushman & Wakefield. All rights reserved. The information contained in this communication is strictly confidential. This information has been obtained from sources believed to be reliable but has not been verified. NO WARRANTY OR REPRESENTATION, EXPRESS OR IMPLIED, IS MADE AS TO THE CONDITION OF THE PROPERTY (OR PROPERTIES) REFERENCED HEREIN OR AS TO THE ACCURACY OR COMPLETENESS OF THE INFORMATION CONTAINED HEREIN, AND SAME IS SUBMITTED SUBJECT TO ERRORS, OMISSIONS, CHANGE OF PRICE, RENTAL OR OTHER CONDITIONS, WITHDRAWAL WITHOUT NOTICE, AND TO ANY SPECIAL LISTING CONDITIONS IMPOSED BY THE PROPERTY OWNER(S). ANY PROJECTIONS, OPINIONS OR ESTIMATES ARE SUBJECT TO UNCERTAINTY AND DO NOT SIGNIFY CURRENT OR FUTURE PROPERTY PERFORMANCE.

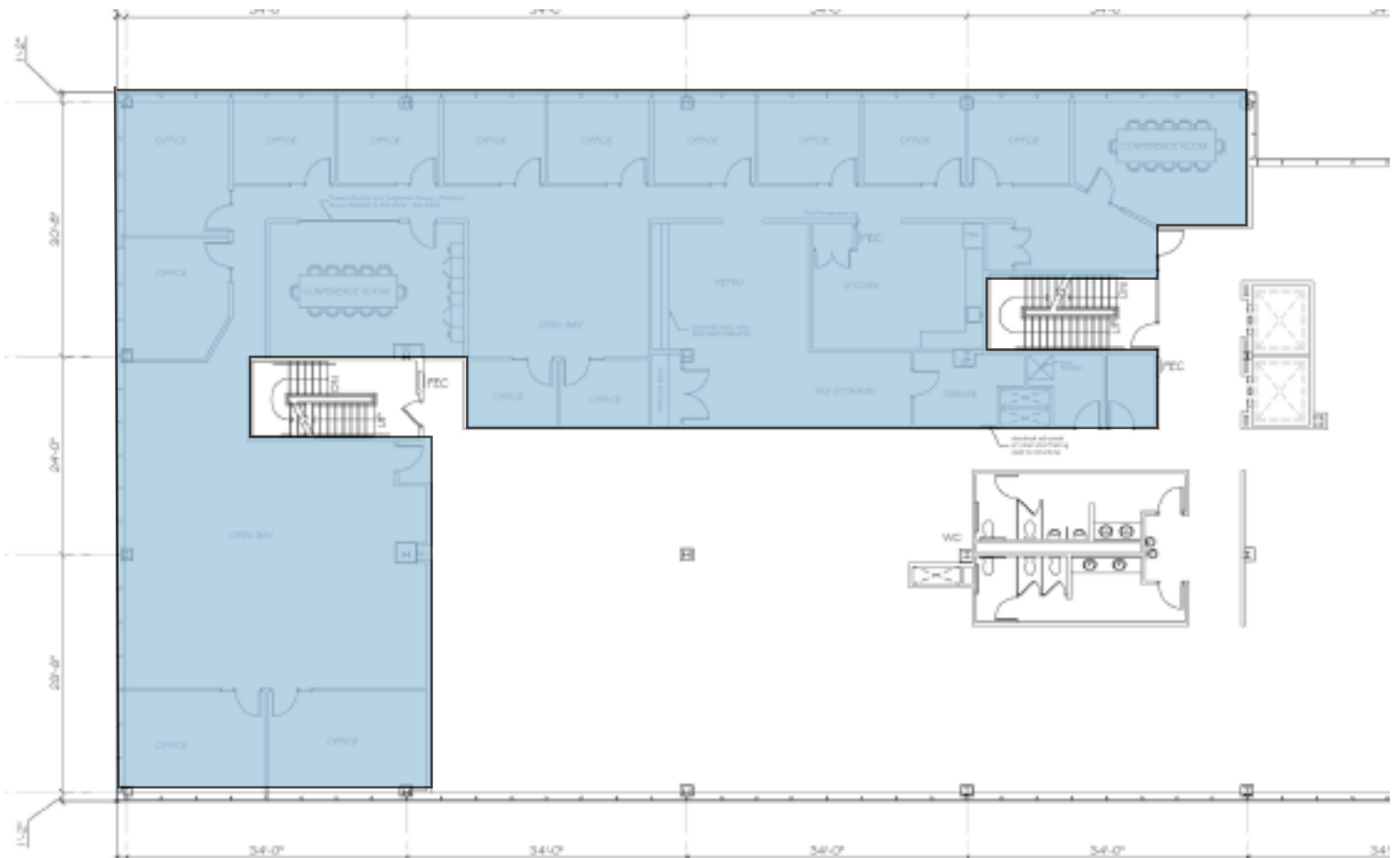


FOR LEASE

ONE ADAMS PLACE

300-310 SEVEN FIELDS BLVD.
SEVEN FIELDS, PA 16046

2ND FLOOR: 7,525 SF AVAILABLE



TIMOTHY GOETZ
412.391.2632
tim.r.goetz@cushwake.com
LIC# RM042209A

CUSHMAN & WAKEFIELD
310 Grant Street, Suite 1825, Pittsburgh, PA
412 391 2600
cushmanwakefield.com

©2023 Cushman & Wakefield. All rights reserved. The information contained in this communication is strictly confidential. This information has been obtained from sources believed to be reliable but has not been verified. NO WARRANTY OR REPRESENTATION, EXPRESS OR IMPLIED, IS MADE AS TO THE CONDITION OF THE PROPERTY (OR PROPERTIES) REFERENCED HEREIN OR AS TO THE ACCURACY OR COMPLETENESS OF THE INFORMATION CONTAINED HEREIN, AND SAME IS SUBMITTED SUBJECT TO ERRORS, OMISSIONS, CHANGE OF PRICE, RENTAL OR OTHER CONDITIONS, WITHDRAWAL WITHOUT NOTICE, AND TO ANY SPECIAL LISTING CONDITIONS IMPOSED BY THE PROPERTY OWNER(S). ANY PROJECTIONS, OPINIONS OR ESTIMATES ARE SUBJECT TO UNCERTAINTY AND DO NOT SIGNIFY CURRENT OR FUTURE PROPERTY PERFORMANCE.



FOR LEASE

ONE ADAMS PLACE

300-310 SEVEN FIELDS BLVD.
SEVEN FIELDS, PA 16046



TIMOTHY GOETZ
412.391.2632
tim.r.goetz@cushwake.com
LIC# RM042209A

CUSHMAN & WAKEFIELD
310 Grant Street, Suite 1825, Pittsburgh, PA
412 391 2600
cushmanwakefield.com

©2023 Cushman & Wakefield. All rights reserved. The information contained in this communication is strictly confidential. This information has been obtained from sources believed to be reliable but has not been verified. NO WARRANTY OR REPRESENTATION, EXPRESS OR IMPLIED, IS MADE AS TO THE CONDITION OF THE PROPERTY (OR PROPERTIES) REFERENCED HEREIN OR AS TO THE ACCURACY OR COMPLETENESS OF THE INFORMATION CONTAINED HEREIN, AND SAME IS SUBMITTED SUBJECT TO ERRORS, OMISSIONS, CHANGE OF PRICE, RENTAL OR OTHER CONDITIONS, WITHDRAWAL WITHOUT NOTICE, AND TO ANY SPECIAL LISTING CONDITIONS IMPOSED BY THE PROPERTY OWNER(S). ANY PROJECTIONS, OPINIONS OR ESTIMATES ARE SUBJECT TO UNCERTAINTY AND DO NOT SIGNIFY CURRENT OR FUTURE PROPERTY PERFORMANCE.