



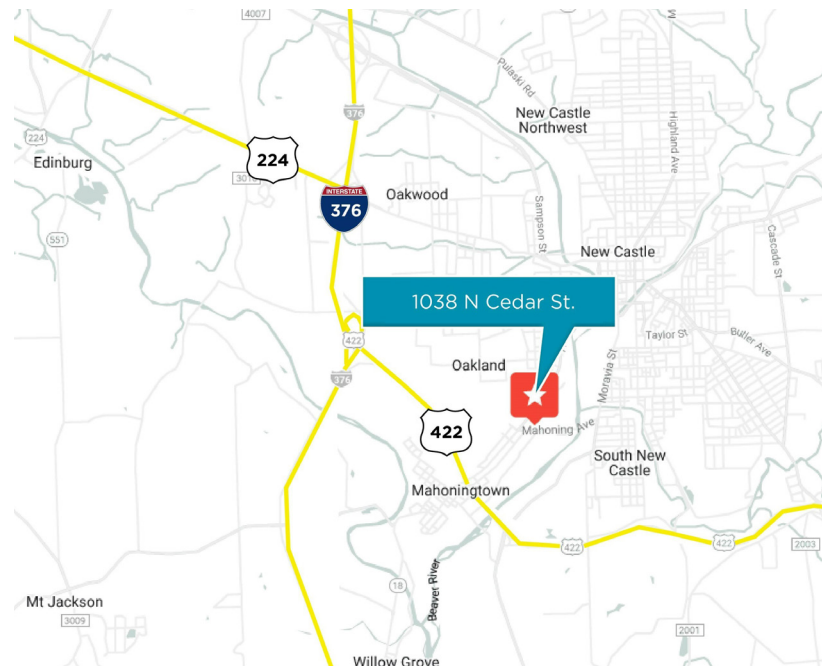
FOR LEASE OR SALE  
**1038 N CEDAR ST.**  
New Castle, PA 16102

## CRANE SERVED



## PROPERTY FEATURES

- 43,335 sf, two building property
  - 39,975 sf industrial/manufacturing
  - 3,360 sf office (building detached)
- Two bay crane building - 20T, 7.5T, 1T
- Located on 2.36 acres
- Drive-through access
- Heavy power
- Easily accessible location:
  - 2.5 miles to I-376
  - 2 miles to US-422
- Adjacent to active rail line



**DANA GRAU, SIOR, CCIM**  
412.391.2636  
dana.grau@cushwake.com  
LIC# RS200446L

**EVAN CICIRELLO**  
412.697.6558  
evan.cicirello@cushwake.com  
LIC# RS319106

**CUSHMAN & WAKEFIELD**  
310 Grant Street, Suite 1825, Pittsburgh, PA  
412 391 2600  
[cushmanwakefield.com](http://cushmanwakefield.com)



**CUSHMAN &  
WAKEFIELD**

**FOR LEASE OR SALE**  
**1038 N CEDAR ST.**

New Castle, PA 16102

**PROPERTY SUMMARY**

**PROPERTY SIZE** 39,975 SF WAREHOUSE  
+ 3,360 SF OFFICE  
43,335 +/- SF TOTAL

**PARCEL SIZE** 2.36 acres

**CRANES** 20T (60' span) - 16' under hook;  
7.5T and 1T (39' span) - 16' under hook  
Five (5) drive-in doors with drive through configuration:

**DRIVE-IN DOORS**

Three (3)	16'x14'
One (1)	11'x16'
One (1)	18'x16'

**LOADING DOCKS** One platform dock

**ELECTRICAL** 480V, 3,800 amps

**CLEAR HEIGHT** 24' to 27.5'

**LIGHTING** New T5 lights

**HVAC** Warehouse: infrared radiant heating  
Office: full HVAC

**FLOOR** 8" concrete

- FEATURES**
- Motion detection alarm system
  - Excess land available to expand building, add parking, or use for laydown space.
  - Plumbing stubbed in warehouse
  - Compressed air lines
  - Crane building wired for cat-6

**RAIL ACCESS** Adjacent to active rail line

**CONSTRUCTION TYPE** Steel and masonry

**ZONING** M-1

**2021 TAXES** \$12,951



**DANA GRAU, SIOR, CCIM**  
412.391.2636  
dana.grau@cushwake.com  
LIC# RS200446L

**EVAN CICIRELLO**  
412.697.6558  
evan.cicirello@cushwake.com  
LIC# RS319106

**CUSHMAN & WAKEFIELD**  
310 Grant Street, Suite 1825, Pittsburgh, PA  
412 391 2600  
[cushmanwakefield.com](http://cushmanwakefield.com)

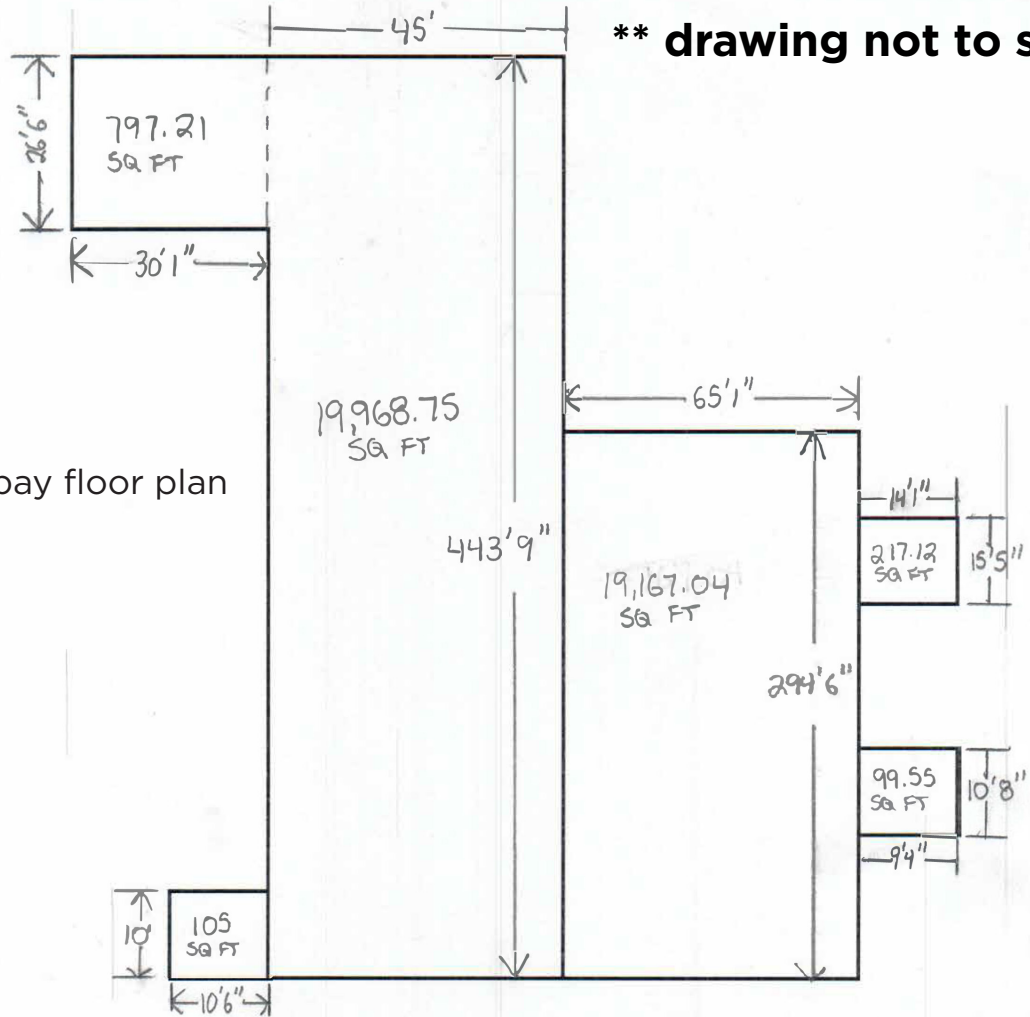
©2023 Cushman & Wakefield. All rights reserved. The information contained in this communication is strictly confidential. This information has been obtained from sources believed to be reliable but has not been verified. NO WARRANTY OR REPRESENTATION, EXPRESS OR IMPLIED, IS MADE AS TO THE CONDITION OF THE PROPERTY (OR PROPERTIES) REFERENCED HEREIN OR AS TO THE ACCURACY OR COMPLETENESS OF THE INFORMATION CONTAINED HEREIN, AND SAME IS SUBMITTED SUBJECT TO ERRORS, OMISSIONS, CHANGE OF PRICE, RENTAL OR OTHER CONDITIONS, WITHDRAWAL WITHOUT NOTICE, AND TO ANY SPECIAL LISTING CONDITIONS IMPOSED BY THE PROPERTY OWNER(S). ANY PROJECTIONS, OPINIONS OR ESTIMATES ARE SUBJECT TO UNCERTAINTY AND DO NOT SIGNIFY CURRENT OR FUTURE PROPERTY PERFORMANCE.



**CUSHMAN &  
WAKEFIELD**

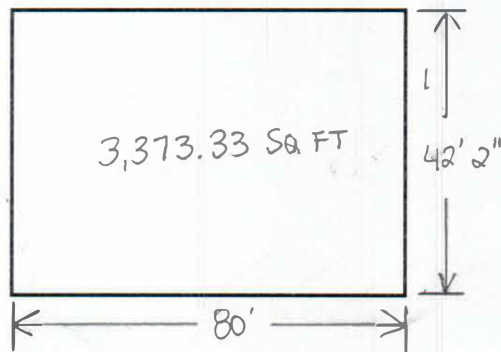
**FOR LEASE OR SALE  
1038 N CEDAR ST.**

New Castle, PA 16102



**\*\* drawing not to scale**

two crane bay floor plan



free standing office building

**DANA GRAU, SIOR, CCIM**  
412.391.2636  
dana.grau@cushwake.com  
LIC# RS200446L

**EVAN CICIRELLO**  
412.697.6558  
evan.cicirello@cushwake.com  
LIC# RS319106

**CUSHMAN & WAKEFIELD**  
310 Grant Street, Suite 1825, Pittsburgh, PA  
412 391 2600  
[cushmanwakefield.com](http://cushmanwakefield.com)



**CUSHMAN &  
WAKEFIELD**

# FOR LEASE OR SALE 1038 N CEDAR ST.

New Castle, PA 16102



**DANA GRAU, SIOR, CCIM**  
412.391.2636  
dana.grau@cushwake.com  
LIC# RS200446L

**EVAN CICIRELLO**  
412.697.6558  
evan.cicirello@cushwake.com  
LIC# RS319106

**CUSHMAN & WAKEFIELD**  
310 Grant Street, Suite 1825, Pittsburgh, PA  
412 391 2600  
[cushmanwakefield.com](http://cushmanwakefield.com)