

FOR SALE

620 FRANKLIN FARMS RD  
WASHINGTON, PA 15301



**WELL MAINTAINED 4,102 SF SINGLE TENANT FLEX BUILDING**

**4,102 SF OFFICE/WAREHOUSE**

**Office & Training Room**

• **Office Layout:**

- ◆ Seven (7) individual offices
- ◆ Center conference room
- ◆ IT/server room
- ◆ Three (3) restrooms

• REME HALO HVAC system

• Antimicrobial flooring

• Training room can easily be converted to warehouse

**Warehouse**

- Two (2) new grade level roll-up doors: 10'H x 12'W
- New Reznor heating unit
- 120/240V 250 Amp service
- 12 parking spaces available
- Floor drains



*Former municipal building of North Franklin Township*

**DARIN SHRIVER**

724 255 9540  
darin.shriver@cushwake.com  
LIC# RS321512

**EVAN CICIRELLO**

412 697 6558  
evan.cicirello@cushwake.com  
LIC# RS319106

310 Grant Street, Suite 1825  
Pittsburgh, PA 15219  
412 391 2600  
cushmanwakefield.com

# PHOTOS

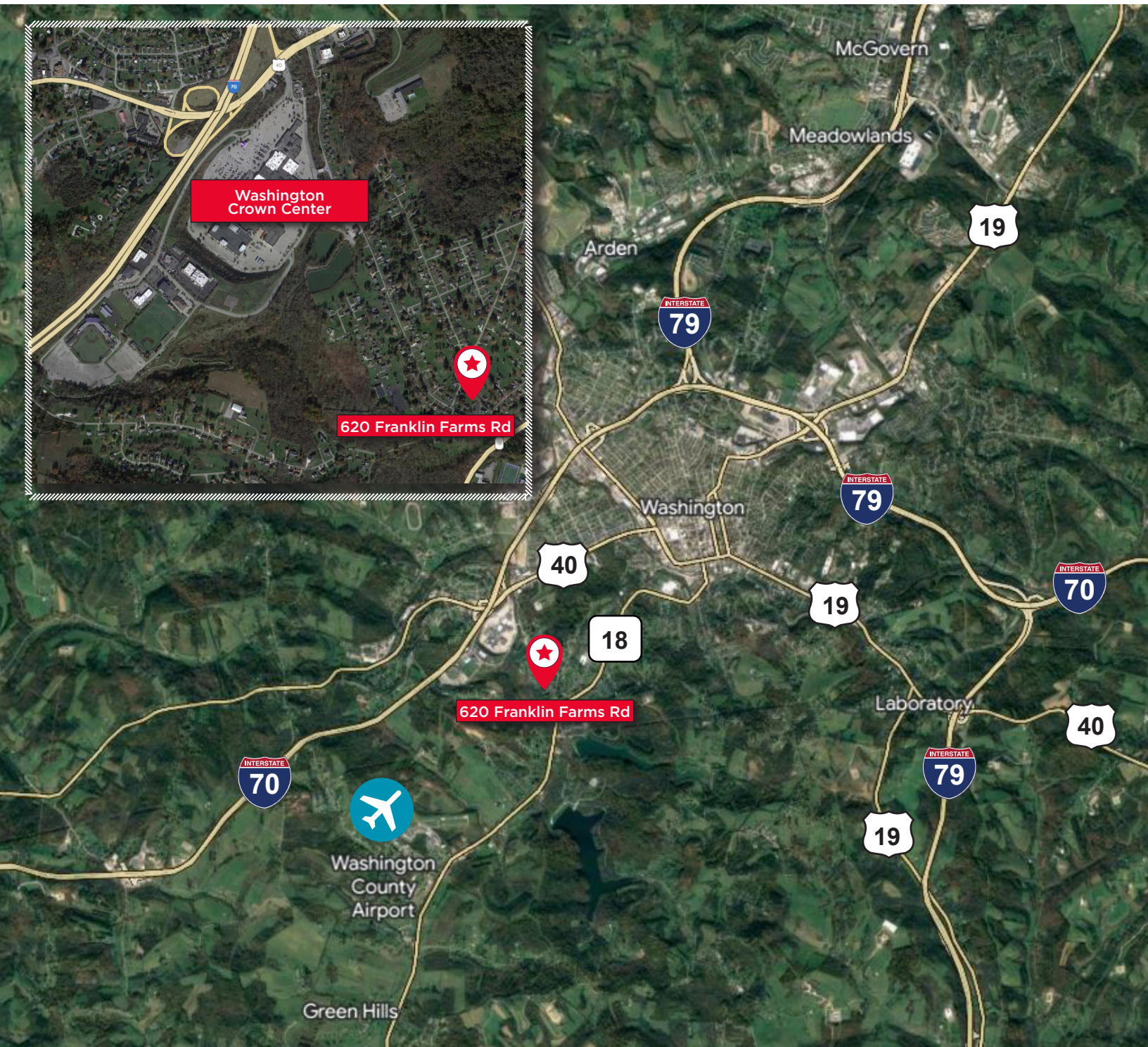


**DARIN SHRIVER**  
724 255 9540  
darin.shriver@cushwake.com  
LIC# RS321512

**EVAN CICIRELLO**  
412 697 6558  
evan.cicirello@cushwake.com  
LIC# RS319106

310 Grant Street, Suite 1825  
Pittsburgh, PA 15219  
412 391 2600  
cushmanwakefield.com

# LOCATION



For more information, please contact:

**DARIN SHRIVER**  
724 255 9540  
darin.shriver@cushwake.com  
LIC# RS321512

**EVAN CICIRELLO**  
412 697 6558  
evan.cicirello@cushwake.com  
LIC# RS319106

310 Grant Street, Suite 1825  
Pittsburgh, PA 15219  
412 391 2600  
[cushmanwakefield.com](http://cushmanwakefield.com)