

FOR LEASE

210 Industrial Parkway Cheektowaga, New York



CENTRALLY LOCATED FREESTANDING INDUSTRIAL / WAREHOUSE BUILDING

Features	
Building Size	20,000 ± Sq.Ft.
Zoning	M1
Year Built	1969
Parking	Front & Rear

Property Highlights

- Freestanding 20,000 SF Insulated Steel Building (100' x 200')
- 24' Ceiling Height to Joist (Clearspan)
- Industrial Concrete Floor with Center Trench Floor Drains
- Six (6) Grade Level Overhead Doors (20'w x 14'h).
- 3 front, 3 rear (drive-thru)
- Gas Fired Unit Heaters
- 10' x 12' Shop Office
- Skylights
- Yard Storage Possible
- Industrial Park Location
- Ideal for a Wide Variety of Commercial and Industrial Uses

Contact

BENEDICT J. BORRUSO
Associate Real Estate Broker
716.861.5090- cell
bborruso@pyramidbrokerage.com

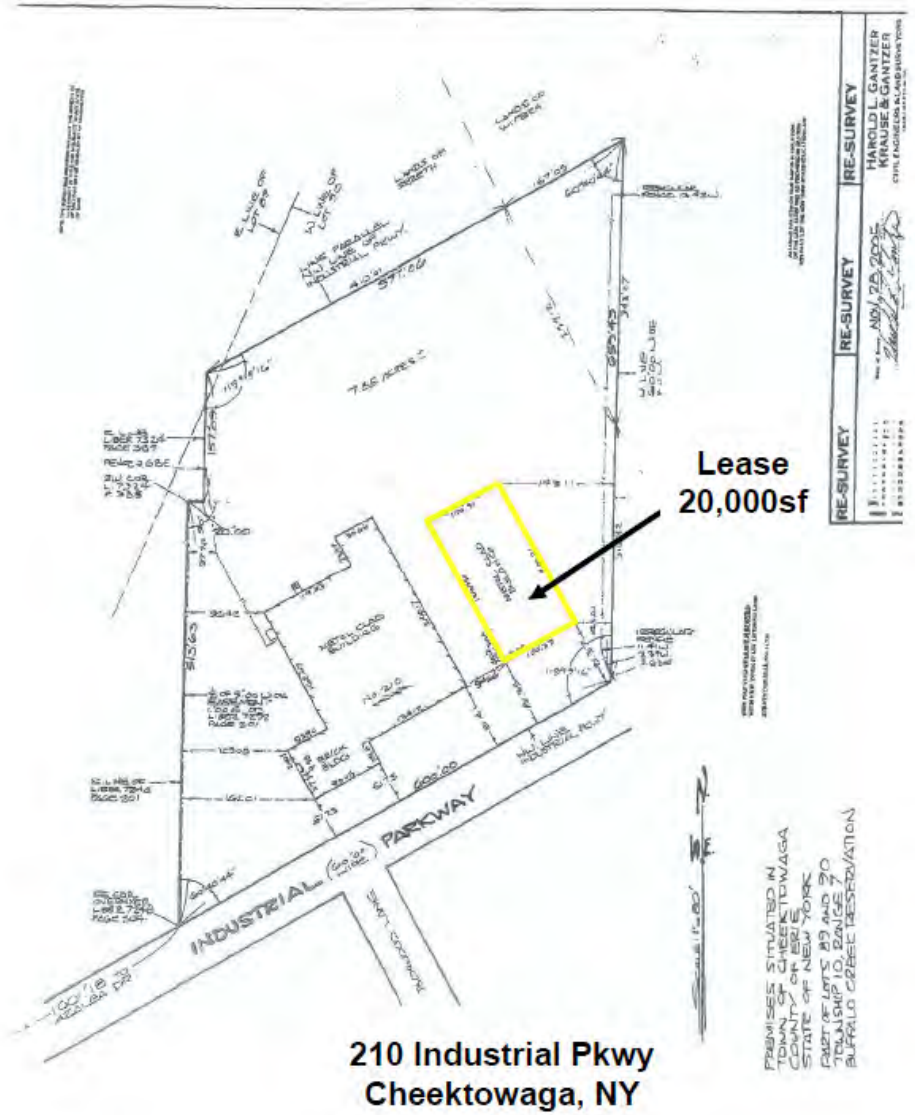
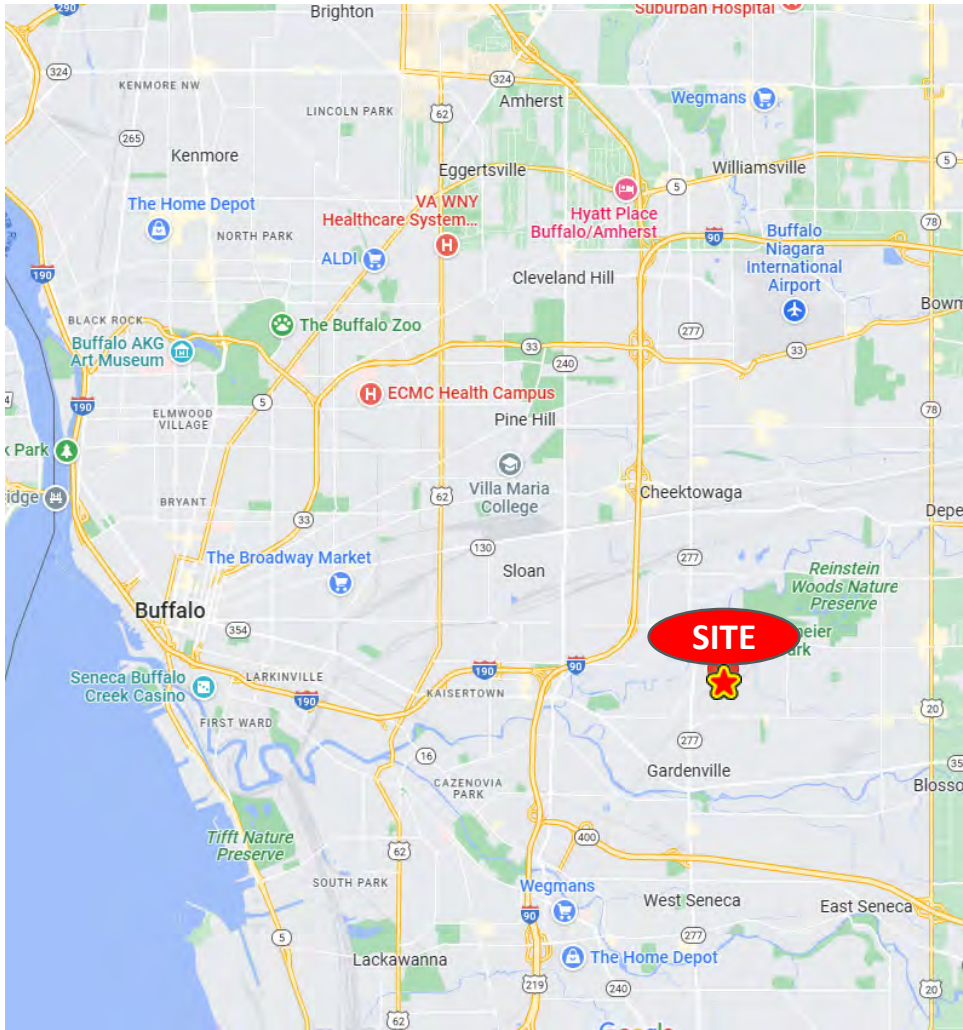
24' CLEARSPAN WITH TRENCH FLOOR DRAINS



14 Lafayette Square, Suite 1900
Buffalo, New York 14203
+1 716 852 7500
pyramidbrokerage.com

FOR LEASE

210 Industrial Parkway Cheektowaga, New York



Location Map

Survey