



## Strongsville

**Grafton, Ohio 44044 - \$4,000**

35710 East Royalton Road, Grafton, 44044



- Type: **Commercial**
- Style: **Single Story**
- Bathrooms: **2**
- Half Bathrooms: **2**
- Size: **4500 square feet**



**Ken Weber**  
fairtoall@gmail.com  
12162992449  
www.kenweber.biz

**Strongsville**

12198 Pearl Road, Strongsville, 44136

## Property Summary

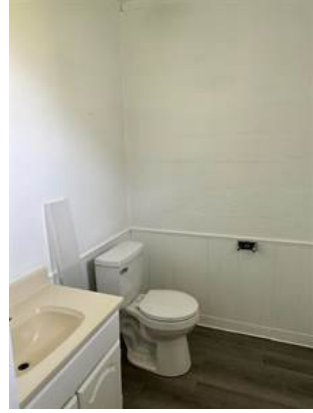
Type: **Commercial**  
Style: **Single Story**  
Bathrooms: **2**  
Half Bathrooms: **2**  
Garage: **Triple, Attached**  
Basement: **No**  
Size: **4500 square feet**  
Lot size: **5 acres**  
Has Suite: **No**  
Year Built: **1953**  
Taxes: **\$0**  
Development Level: **Built**

## Description

3 private offices, with large open space, four restrooms, two of them have showers, private front and rear entrances. Could be office or retail. Great clean space. Three bay garage and warehouse. Over 1.5 acres of parking front and rear. Kitchenette with cabinets, refrigerator, and counters. Two side entrances. Some updates. Security light in Rear Parking Lot.



Additional Photos



Additional Photos



## Additional Photos



*Information is deemed to be correct but not guaranteed.*