

3249 LORNA RD
HOOVER, AL



For Lease
Office/Medical

PROPERTY SUMMARY

BUILDING SIZE: ± 2,600 Square Feet
OFFICES: ± 1,800 Square Feet
STORAGE BUILDING: ± 800 Square Feet
(Kennel)(Conditioned)

ZONED: C-1
(Neighborhood Shopping District)

PARKING: 6 Spaces

TRAFFIC COUNTS: 25,578 VPD S of Rocky Ridge
19,439 VPD N of Rocky Ridge

RATE: \$11.55/Square Foot
net of utilities



PROPERTY HIGHLIGHTS

Building is in the heart of Hoover on Lorna Road with direct access off US Highway 31 and is located within close to I-65 and I-459. Just minutes away from Riverchase Galleria, other shopping, hotels and multitudes of eating establishments immediate area.



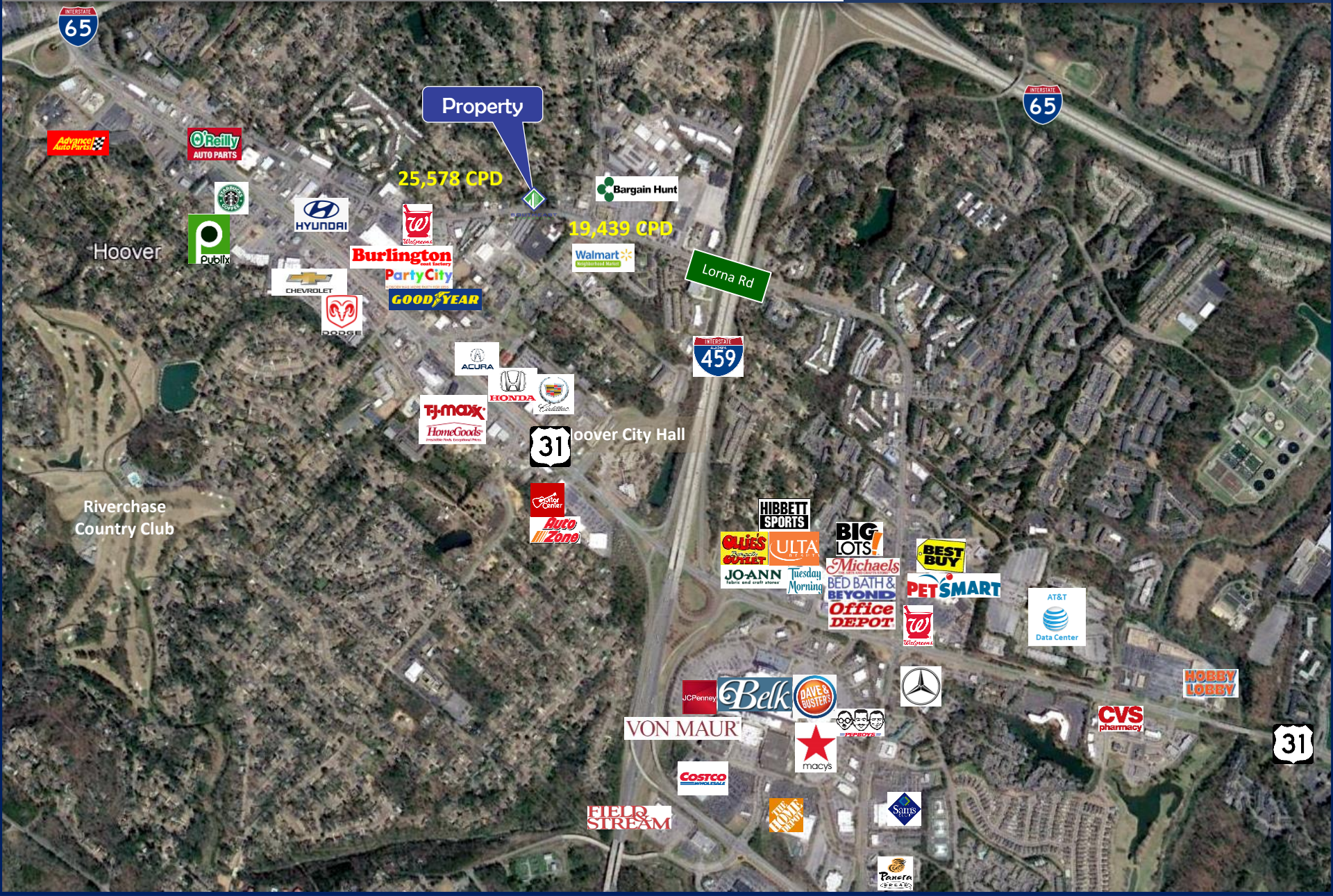
Tim Reddock | Broker

OFFICE: 205.623.3202
DIRECT: 205.332.3474
MOBILE: 205.222.1314

3249 LORNA RD
HOOVER, AL



For Lease
Office/Medical



Property

25,578 CPD

19,439 CPD

Lorna Rd

459

Hoover City Hall

31

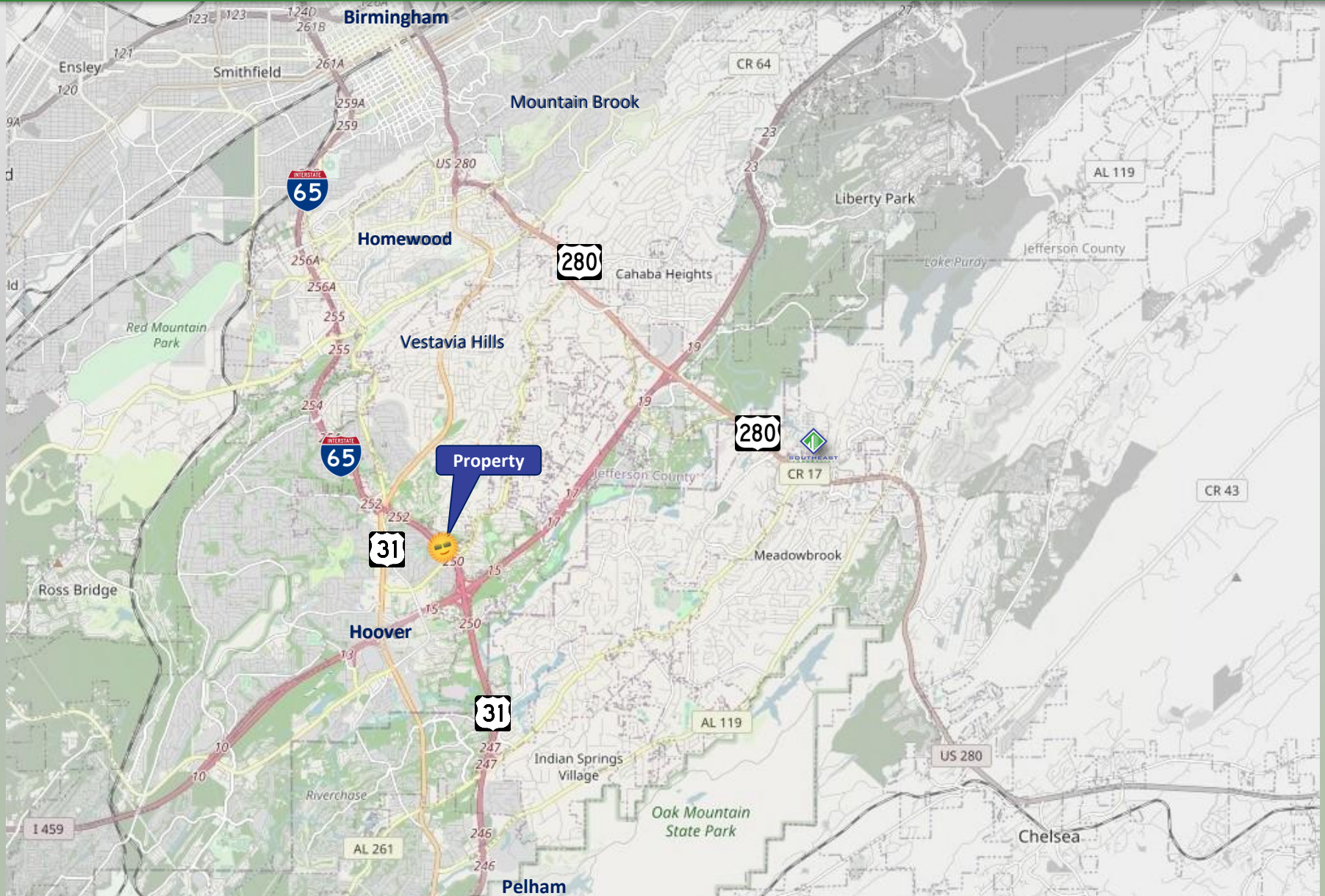
31

3249 LORNA RD
HOOVER, AL



SOUTHEAST
COMMERCIAL

For Lease
Office/Medical



No warranty or representation, express or implied, is made to the accuracy or completeness of the information contained herein, and same is submitted subject to errors, omissions, change of price, rental or other conditions, withdrawal without notice, and to any special listing conditions imposed by the property owner(s). As applicable, we make no representation as to the condition of the property (or properties) in question.

3249 LORNA RD
HOOVER, AL



For Lease
Office/Medical



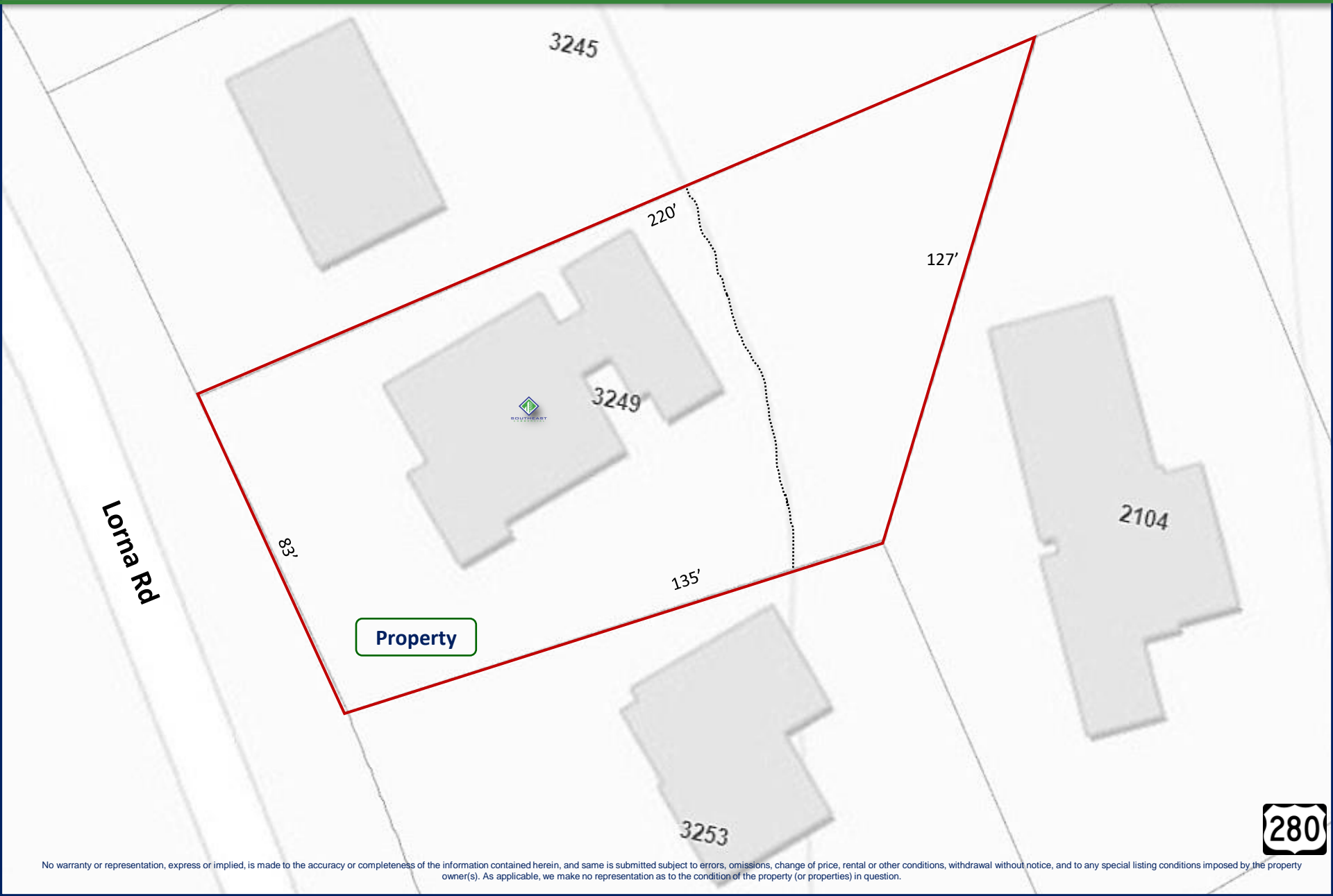
SOUTHEAST
COMMERCIAL



3249 LORNA RD
HOOVER, AL



For Lease
Office/Medical



No warranty or representation, express or implied, is made to the accuracy or completeness of the information contained herein, and same is submitted subject to errors, omissions, change of price, rental or other conditions, withdrawal without notice, and to any special listing conditions imposed by the property owner(s). As applicable, we make no representation as to the condition of the property (or properties) in question.



3249 LORNA RD
HOOVER, AL

HOOVER
ANIMAL
CLINIC

For Lease
Office/Medical