

2503

SOUTH MAIN STREET

MANSFIELD, PA



Pyramid Brokerage
Company



±74,850 SF

AVAILABLE

Gerard J. Blinebury, Jr.
Executive Vice Chair
+1 717 231 7291
gerry.blinebury@cushwake.com

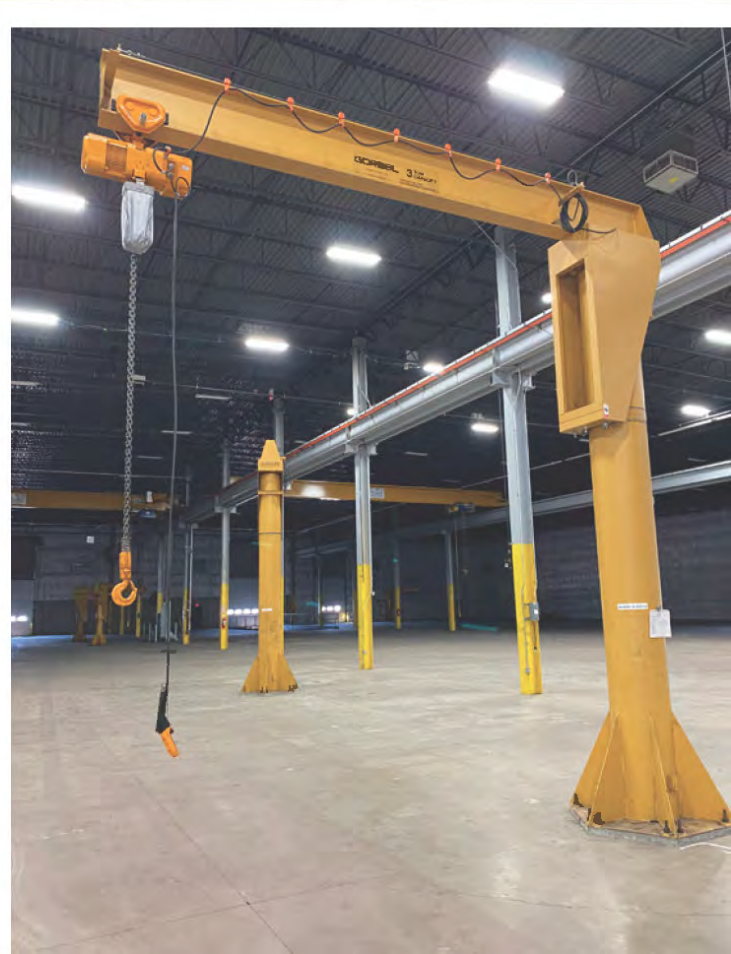
Collin Potter
Senior Associate
+1 717 231 7460
collin.potter@cushwake.com

Michael J. Manzari, CCIM, SIOR
Executive Managing Director
+1 607 738 8458
mmanzari@pyramidbrokerage.com



**CUSHMAN &
WAKEFIELD**

Cushman & Wakefield Copyright 2023. No warranty or representation, express or implied, is made to the accuracy or completeness of the information contained herein, and same is submitted subject to errors, omissions, change of price, rental or other conditions, withdrawal without notice, and to any special listing conditions imposed by the property owner(s). As applicable, we make no representation as to the condition of the property (or properties) in question.

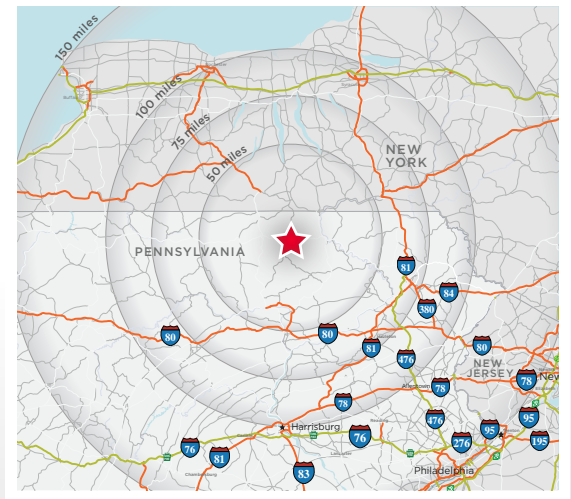






SPECS

Building Size	±74,850 SF
Office Size	±11,511 SF
Acreage	14.29 acres
Clear Height	30'
Grade Doors	7 (16' x 16') 1 (16' x 16' with interior dock leveler) 1 (12' x 16')
Car Parking	±99 Spaces
Trailer Parking	±20 Spaces
Fire Protection	Wet Sprinkler System
Lighting	Energy-efficient LED
Gorbel Cranes	±9 cranes



Gerard J. Blinebury, Jr.
Executive Vice Chair
+1 717 231 7291
gerry.blinebury@cushwake.com

Collin Potter
Senior Associate
+1 717 231 7460
collin.potter@cushwake.com

Michael J. Manzari, CCIM, SIOR
Executive Managing Director
+1 607 738 8458
mmanzari@pyramidbrokerage.com

Pyramid Brokerage Company

CUSHMAN & WAKEFIELD