

FOR SALE OR LEASE

15 Dwight Park Drive

Syracuse, New York 13209



Located in Dwight Park Industrial Park



10,580± SF Warehouse on 1.43± Acres

Property Highlights

- 10,580± SF situated on 1.43± acres
 - Office: 2,580± SF (7 private offices)
 - Warehouse: 8,000± SF (80'x100')
- 17' 6" ceiling height
- 400A/240V/3 phase
- One (1) 14' x 20' OH door and one (1) 10' x 14' dock door with exterior crane hoist
- Services: SWGE
- Building serviced by Solvay Electric, offering 50%+/- less the electric utility expense
- Located in the Dwight Park Industrial Park 0.5 mile from I-690 and 3 miles from I-90 Exit 39



Traffic Counts

I-690	34,795 AADT
I-90 (off ramp to Exit 39)	4,542 AADT
I-90 (on ramp to Exit 39)	5,033 AADT

Source: NYS DOT 2019

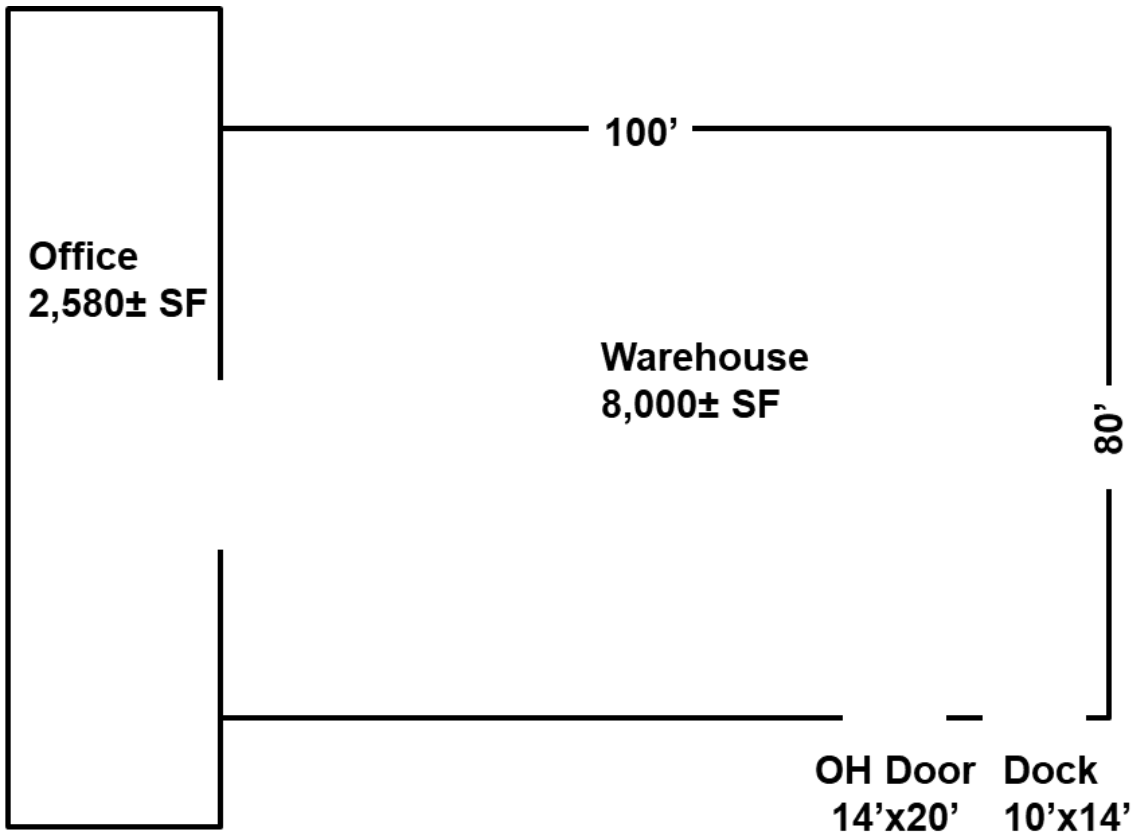
Contact

MICHAEL KALET
Associate Real Estate Broker
+1 315 445 8534 (o) +1 315 427 7816 (c)
mkalet@pyramidbrokerage.com

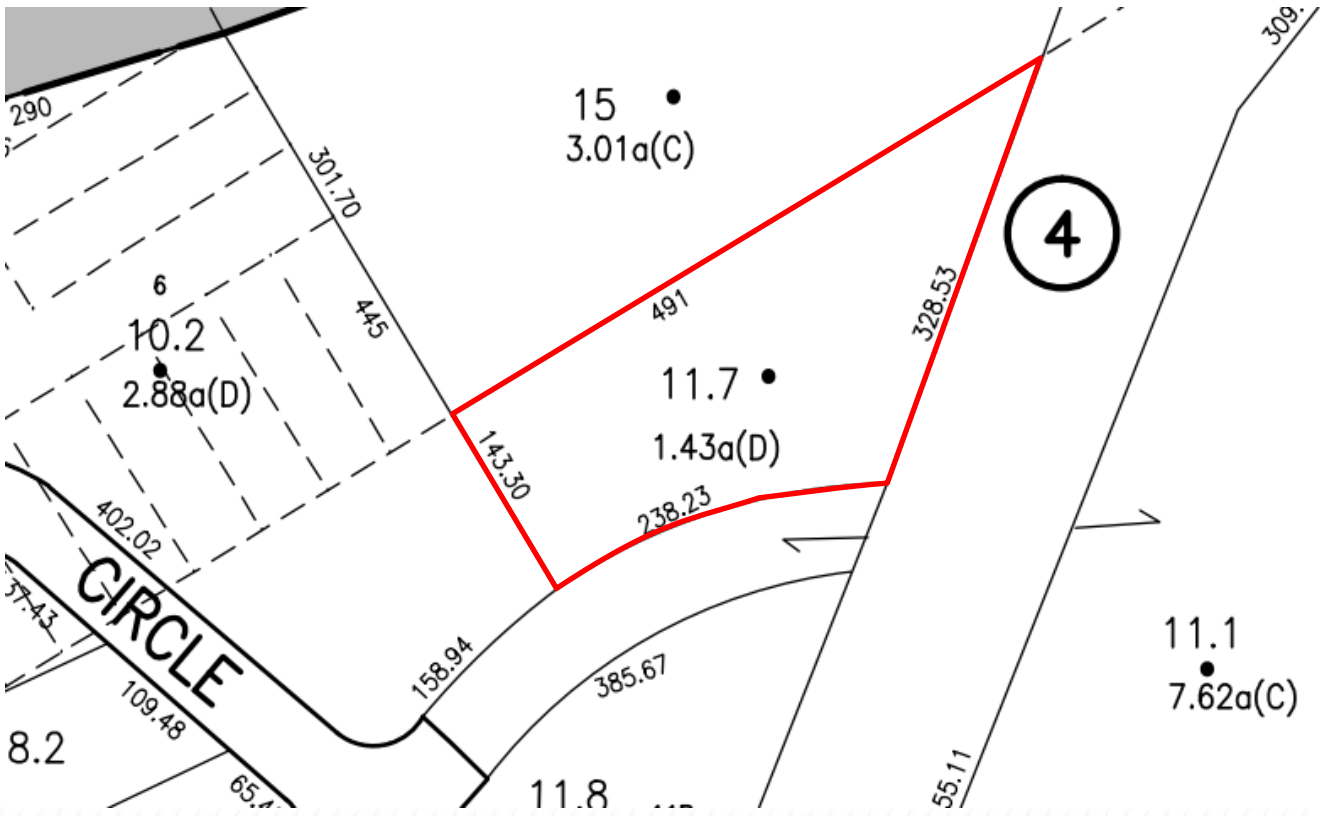
5845 Widewaters Pkwy, Suite 200
East Syracuse, New York 13057
+1 315 445 1030
pyramidbrokerage.com

FOR SALE OR LEASE

15 Dwight Park Drive | Syracuse, New York



Floor Plan - *Not Drawn to Scale



Tax Map

FOR SALE OR LEASE

15 Dwight Park Drive | Syracuse, New York

